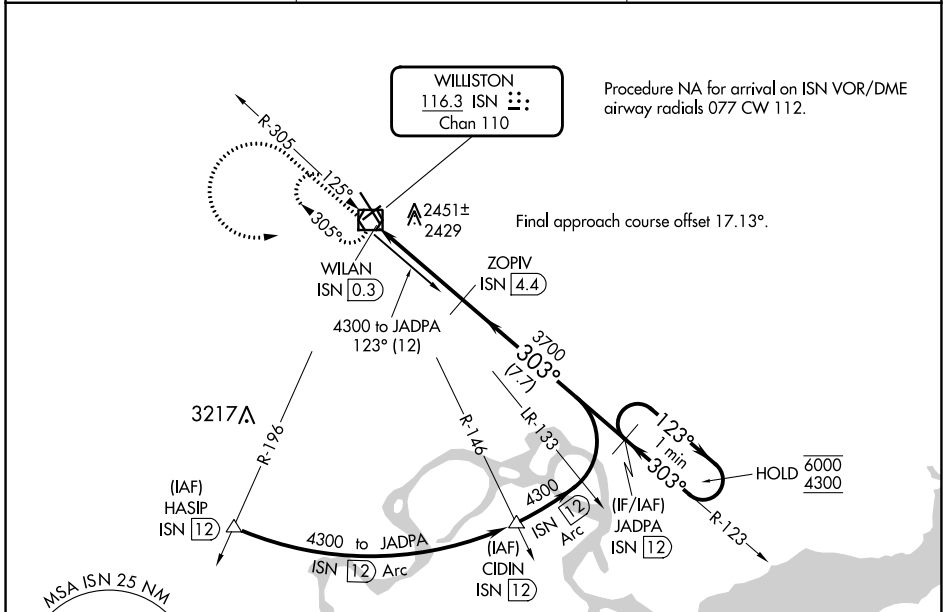


VOR/DME ISN <b>116.3</b> Chan <b>110</b>	APP CRS <b>303°</b>	Rwy Idg <b>7503</b> TDZE <b>2350</b> Apt Elev <b>2353</b>
--	------------------------	---

**VOR RWY 32**  
WILLISTON BASIN INTL (XWA)

DME required.	MALSR	MISSED APPROACH: Climb to 4300 then climbing left turn to 4300 direct ISN VOR/DME and hold
<p>▼</p> <p>▲</p> <p>For inop ALS, increase S-32 Cats C/D visibility to 1½ SM.</p>		

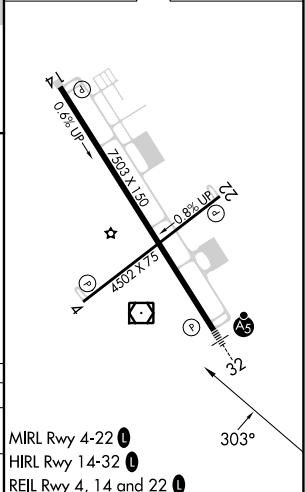
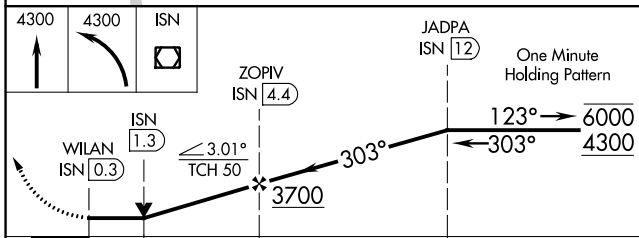
ASOS <b>125.925</b>	SALT LAKE CITY CENTER <b>126.85 305.2</b>	UNICOM <b>122.8</b> (CTAF)
------------------------	--	-------------------------------



NC-1, 22 FEB 2024 to 21 MAR 2024

NC-1, 22 FEB 2024 to 21 MAR 2024

ELEV 2353	TDZE 2350
-----------	-----------



CATEGORY	A	B	C	D
S-32	2740-½ 390 (400-½)		2740-¾ 390 (400-¾)	
CIRCLING	2760-1 407 (500-1)	2820-1 467 (500-1)	2820-1½ 467 (500-1½)	2920-2 567 (600-2)

MIRL Rwy 4-22

HIRL Rwy 14-32

REIL Rwy 4, 14 and 22