

CTAF
 122.7
 REGIONAL DEP CON
 135.975 379.9

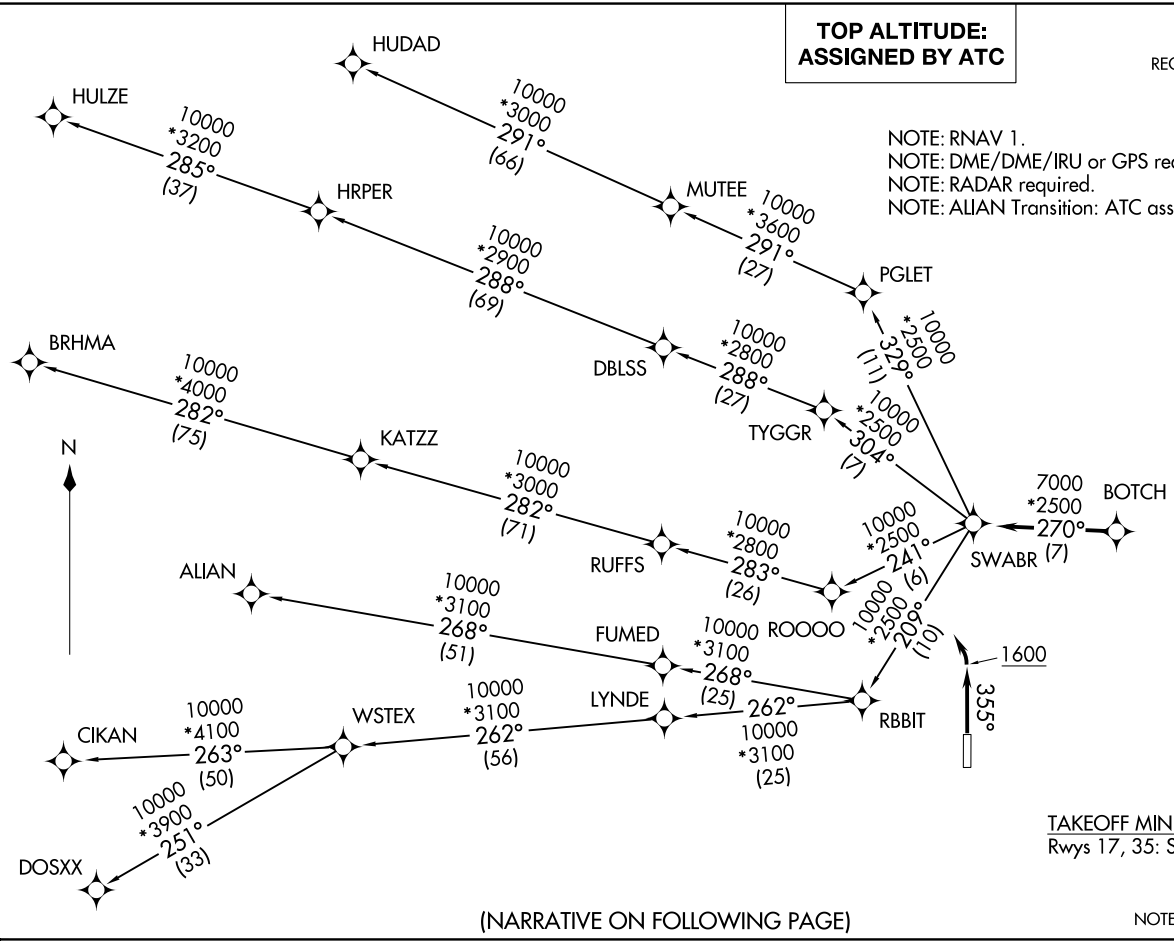
**TOP ALTITUDE:
 ASSIGNED BY ATC**

NOTE: RNAV 1.
 NOTE: DME/DME/IRU or GPS required.
 NOTE: RADAR required.
 NOTE: ALIAN Transition: ATC assigned only.

TAKEOFF MINIMUMS
 Rwy 17, 35: Standard.

NOTE: Chart not to scale.

(NARRATIVE ON FOLLOWING PAGE)



SWABR ONE DEPARTURE (RNAV)



DEPARTURE ROUTE DESCRIPTION

TAKEOFF RUNWAY 35: Climb on heading 355° to 1600 before turning left.

When entering controlled airspace, fly heading assigned by ATC, expect vectors to BOTCH, then on track 270° to SWABR, then on assigned transition. Maintain ATC assigned altitude, expect filed altitude 10 minutes after departure.

ALIAN TRANSITION (SWABR1 .ALIAN)

BRHMA TRANSITION (SWABR1 .BRHMA)

CIKAN TRANSITION (SWABR1 .CIKAN)

DOSXX TRANSITION (SWABR1 .DOSXX)

HUDAD TRANSITION (SWABR1 .HUDAD)

HULZE TRANSITION (SWABR1 .HULZE)

WSTEX TRANSITION (SWABR1 .WSTEX)

SC-2, 22 FEB 2024 to 21 MAR 2024

SC-2, 22 FEB 2024 to 21 MAR 2024