

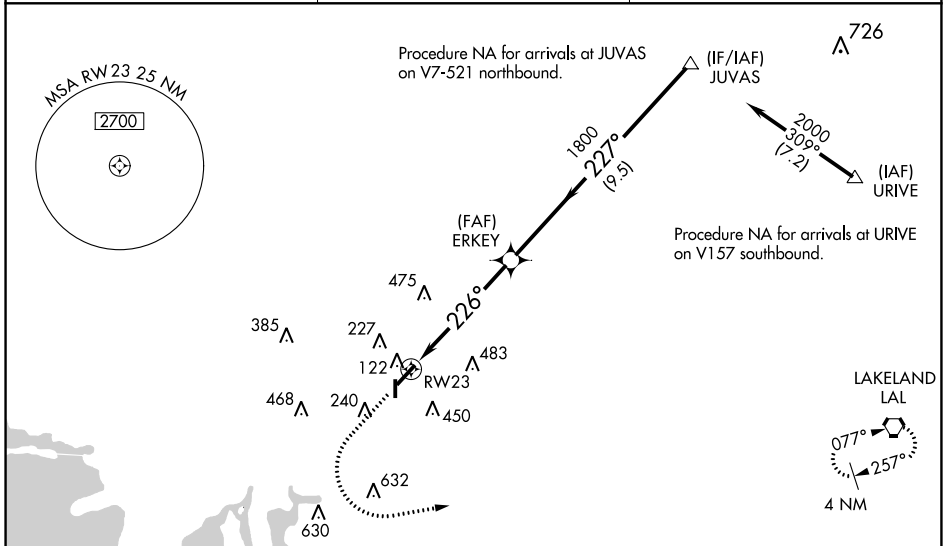
WAAS CH 78100 W23A	APP CRS 226°	Rwy Idg 4200 TDZE 21 Apt Elev 21
---------------------------------	------------------------	---

RNAV (GPS) RWY 23

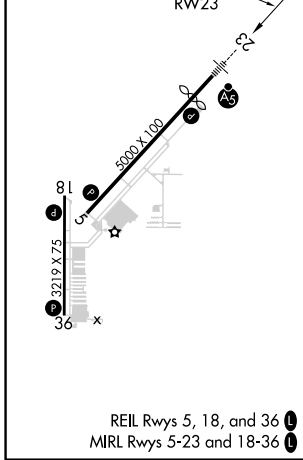
TAMPA EXEC (VDF)

RNP APCH-GPS.	MALSR	MISSED APPROACH: Climb to 800 then climbing left turn to 2700 direct to LAL VORTAC and hold.
<p>▼ Inop table does not apply to LPV and LNAV Cat A/B. Baro-VNAV NA when using Tampa Intl altimeter setting. For uncompensated Baro-VNAV systems, LNAV/VNAV</p> <p>▲ NA below -15°C (5°F) or above 54°C (130°F). Rwy 23 helicopter visibility reduction below 3/4 SM NA. When local altimeter setting not received, use Tampa Intl altimeter setting and increase LPV DA to 323 feet, LNAV/VNAV DA to 513; increase all MDAs 40 feet, and LNAV and Circling Cat C visibilities 1/4 SM. Circling Rwy 18, 36 NA at night.</p>		

AWOS-3 121.125	TAMPA APP CON 119.9 290.3	UNICOM 122.7 (CTAF)
--------------------------	-------------------------------------	-------------------------------



ELEV 21	D	TDZE 21
---------	----------	---------



800	2700	LAL	
ERKEY		JUVAS	Procedure Turn NA
1800		1800	GP 3.10°
5.3 NM		9.5 NM	TCH 40

SE-3, 22 FEB 2024 to 21 MAR 2024

SE-3, 22 FEB 2024 to 21 MAR 2024