

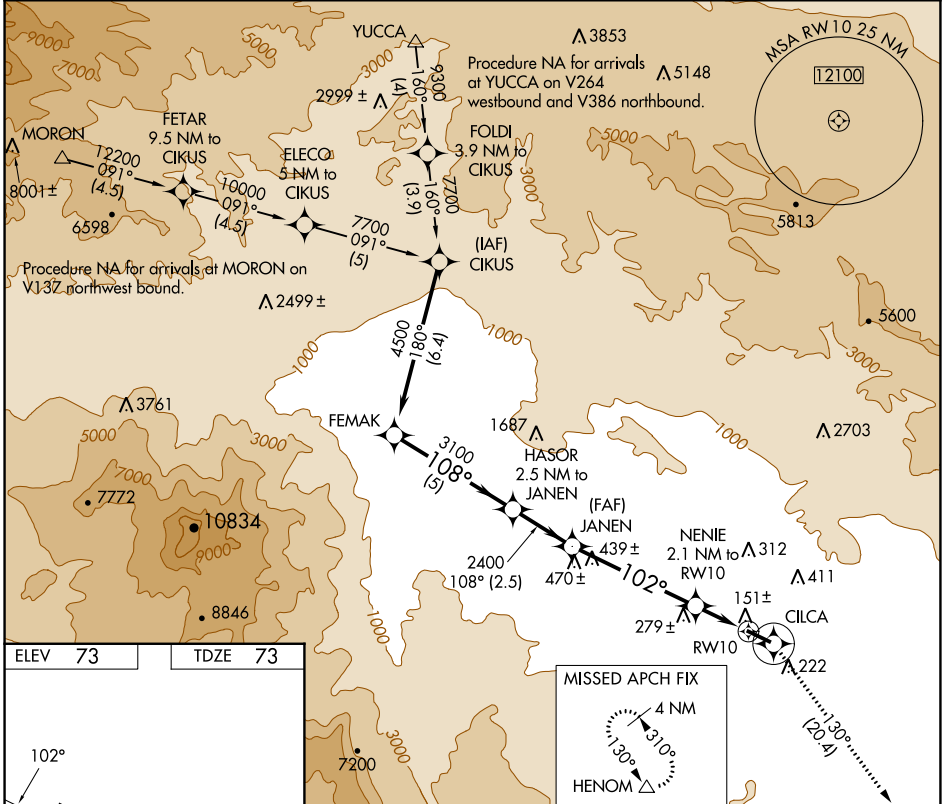
APP CRS	Rwy Idg	5002
102°	TDZE	73
	Apt Elev	73

RNAV (GPS) RWY 10

BERMUDA DUNES (UDD)

RNP APCH - GPS.	MISSED APPROACH: Climb to 3700 direct CILCA and via 130° track to HENOM and hold.
▼ Use Jacqueline Cochran Rgnl altimeter setting. ▲ NA Circling Rwy 28 NA at night.	

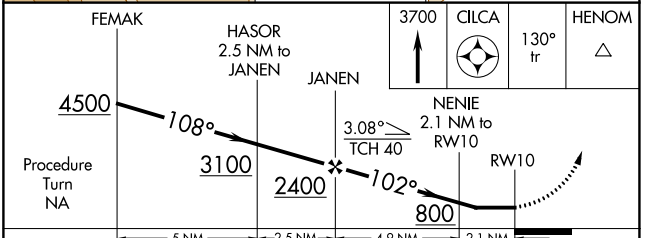
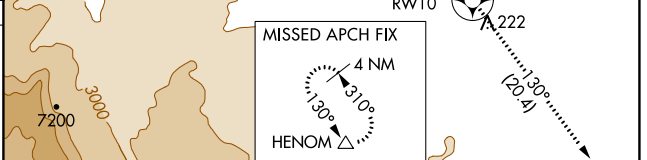
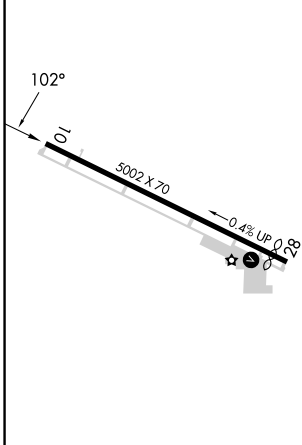
TRM ASOS 118.325	SOCAL APP CON * 135.275 251.1	UNICOM 122.8 (CTAF) 0
----------------------------	---	---------------------------------



SW-3, 22 FEB 2024 to 21 MAR 2024

SW-3, 22 FEB 2024 to 21 MAR 2024

ELEV 73	TDZE 73
---------	---------



CATEGORY	A	B	C	D
LNAV MDA	480-1	407 (500-1)	480-1¼ 407 (500-1¼)	NA
CIRCLING	700-1	627 (700-1)	1100-3 1027 (1100-3)	NA