

TYLER, TEXAS

AL-622 (FAA)

23278

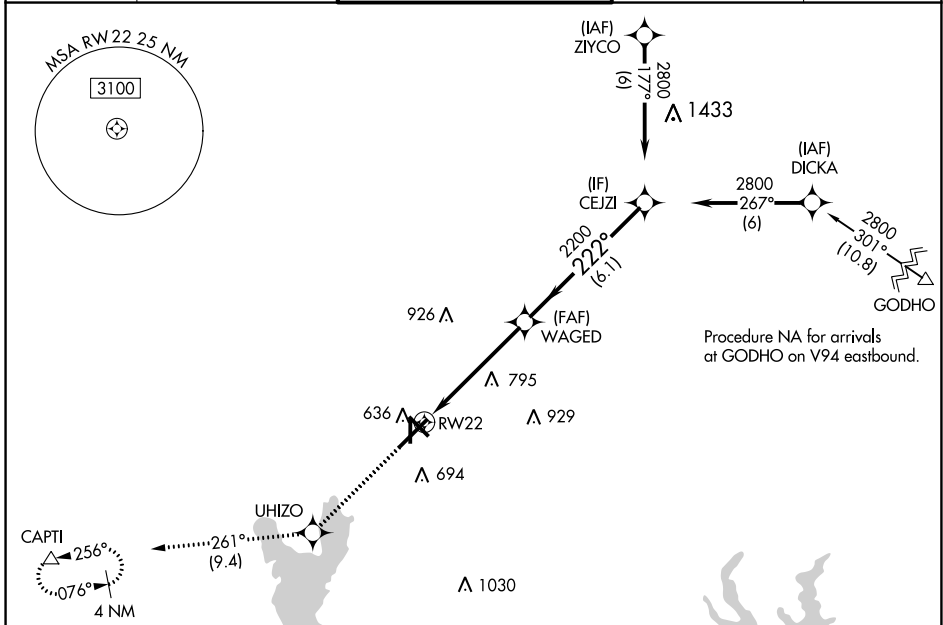
WAAS CH 45514 W22A	APP CRS 222°	Rwy Idg TDZE Apt Elev	7734 539 544
--	------------------------	-----------------------------	---

RNAV (GPS) RWY 22

TYLER POUNDS RGNL (TYR)

RNP APCH.		MISSED APPROACH: Climb to 2500 direct UHIZO and on track 261° to CAPTI and hold.		
▼ For uncompensated Baro-VNAV systems, LNAV/VNAV NA below -5°C or above 54°C.				

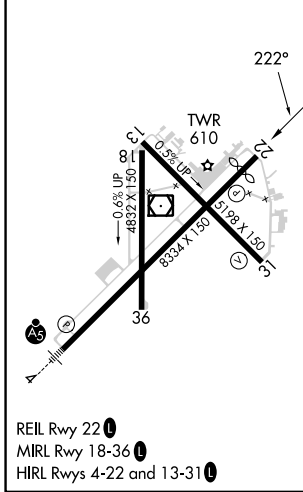
ATIS 126.25	LONGVIEW APP CON* 128.75 379.15	POUNDS TOWER* 120.1 (CTAF) 257.8	GND CON 121.9	UNICOM 122.95
-----------------------	---	--	-------------------------	-------------------------



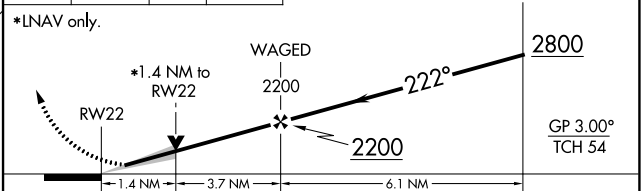
SC-2, 22 FEB 2024 to 21 MAR 2024

SC-2, 22 FEB 2024 to 21 MAR 2024

ELEV 544	D	TDZE 539
----------	---	----------



2500	UHIZO	tr 261°	CAPTI
------	-------	---------	-------



CATEGORY	A	B	C	D
LPV DA		739-3/4	200 (200-3/4)	
LNAV/VNAV DA		807-7/8	268 (300-7/8)	
LNAV MDA	1040-1	501 (500-1)	1040-1 3/8	501 (500-1 3/8)
<input checked="" type="checkbox"/> CIRCLING	1040-1	496 (500-1)	1160-1 3/4 616 (700-1 3/4)	1280-2 1/4 736 (800-2 1/4)

TYLER, TEXAS
Amdt 3A 15AUG19

32°21'N-95°24'W

TYLER POUNDS RGNL (TYR)

RNAV (GPS) RWY 22