

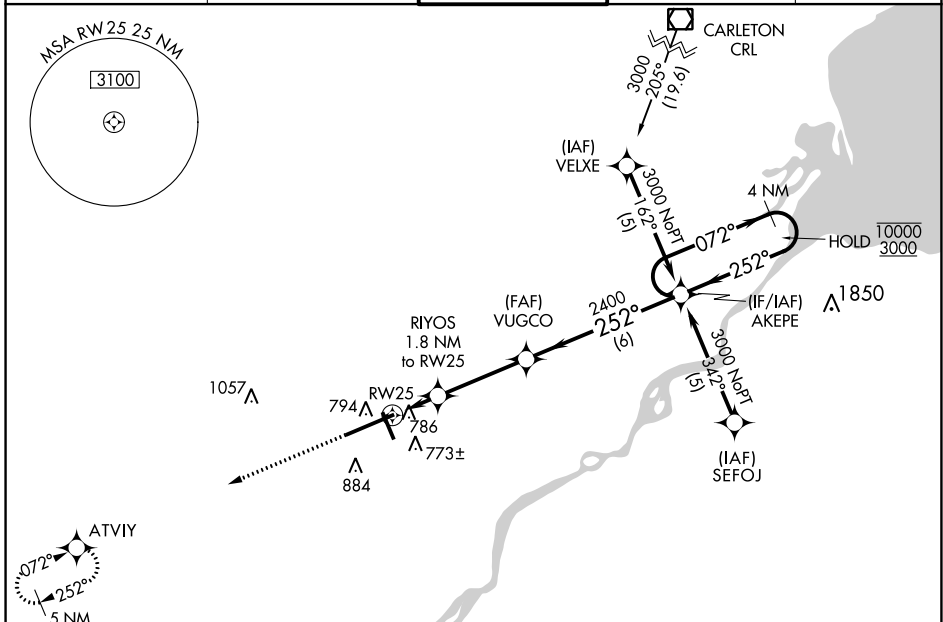
WAAS CH 48899 W25A	APP CRS 252°	Rwy Idg TDZE 678 Apt Elev 683	10599
--	------------------------	---	--------------

RNAV (GPS) RWY 25

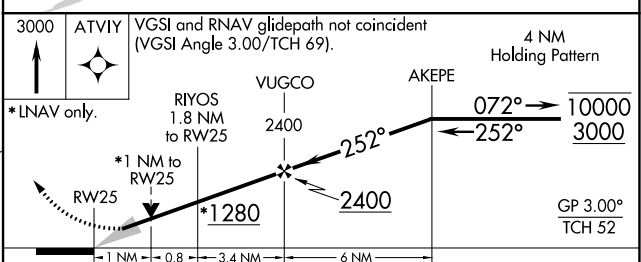
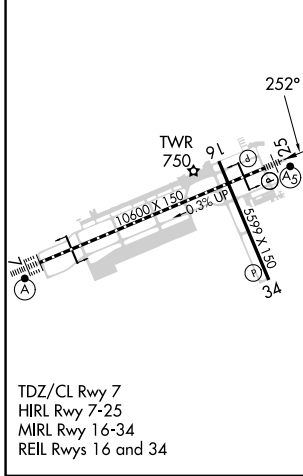
EUGENE F KRANZ TOLEDO EXPRESS (TOL)

RNP APCH.	<p>For uncompensated Baro-VNAV systems, LNAV/VNAV NA below -17°C or above 52°C. For inoperative ALS, increase LPV Cat E visibility to RVR 4000, LNAV/VNAV Cat E visibility to 1½ SM, LNAV Cat D/E visibility to RVR 6000.</p> <p>ASR ** RVR 1800 authorized with the use of FD or AP or HUD to DA.</p>	MALSR	MISSED APPROACH: Climb to 3000 direct ATVIY and hold.
-----------	--	-------	--

ATIS 118.75 290.225	TOLEDO APP CON 134.35 317.55	TOLEDO TOWER 118.1 285.4	GND CON 121.9 348.6	CLNC DEL 121.75 348.6
-------------------------------	--	------------------------------------	-------------------------------	---------------------------------



ELEV 683	D	TDZE 678
----------	----------	----------



CATEGORY	A	B	C	D	E
LPV DA**	878/24		200 (200-½)		
LNAV/VNAV DA	1065/50		387 (400-1)		
LNAV MDA	1040/24		362 (400-½)		1040/50 362 (400-1)
C CIRCLING	1200-1	517 (600-1)	1300-1¾ 617 (700-1¾)	1360-2¼ 677 (700-2¼)	1360-2½ 677 (700-2½)

EC-2, 22 FEB 2024 to 21 MAR 2024

EC-2, 22 FEB 2024 to 21 MAR 2024