

VOR/DME Z RWY 32

VORTAC TQQ 113.0 Chan 77	APCH CRS 314°	Rwy Idg THRE: 12,001 5550 Arprt Elev 5550
--	-------------------------	--

AL-3188 [USAF]

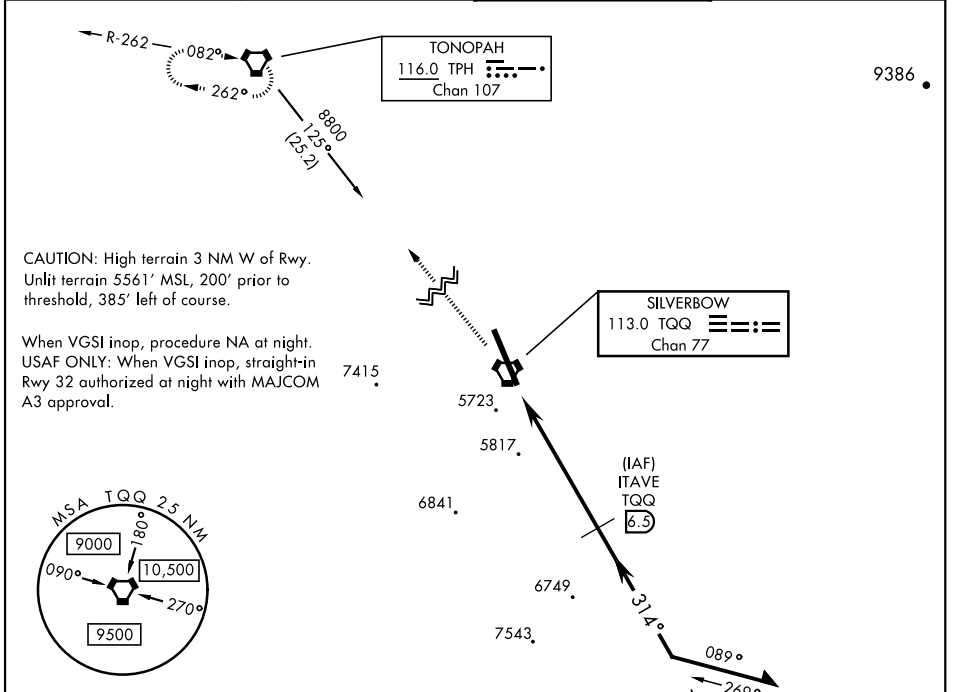
TONOPAH TEST RANGE (KTNX)

V *Circling not authorized W of Rwy 14-32.

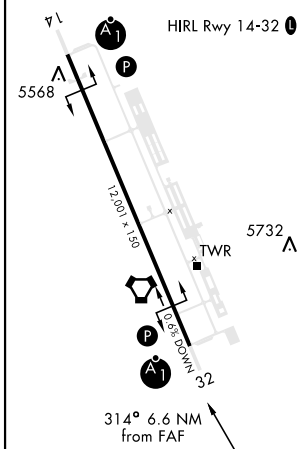
ALSIF-1

MISSED APPROACH: Climb to 11,000 direct to TPH VORTAC and hold. Continue climb in holding to 11,000.

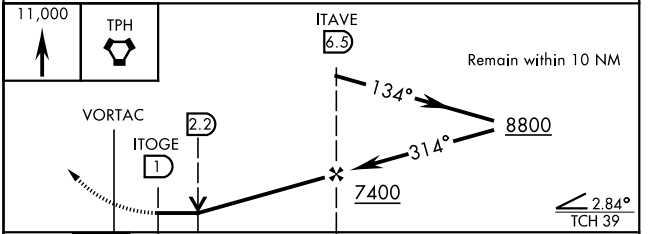
AWOS 113.0	NELLIS CONTROL 119.35 254.4	SILVERBOW TOWER * 124.75 257.95 0	GND CON 127.25 335.5
----------------------	---------------------------------------	---	--------------------------------



ELEV 5550	THRE 5550
-----------	-----------



EMERG SAFE ALT 100 NM 16,600 FROM TQQ



CATEGORY	A	B	C	D	E
S-32	6080/24 530 (600-1/2)		6080/55 530 (600-1)	NOT AUTHORIZED	
C CIRCLING*	6080-1 530 (600-1)		6080-1 1/2 530 (600-1 1/2)	NOT AUTHORIZED	

VOR/DME Z RWY 32

SW-4, 22 FEB 2024 to 21 MAR 2024

SW-4, 22 FEB 2024 to 21 MAR 2024