

APP CRS	Rwy Idg	5488
104°	TDZE	27
	Apt Elev	28

RNAV (GPS) RWY 12

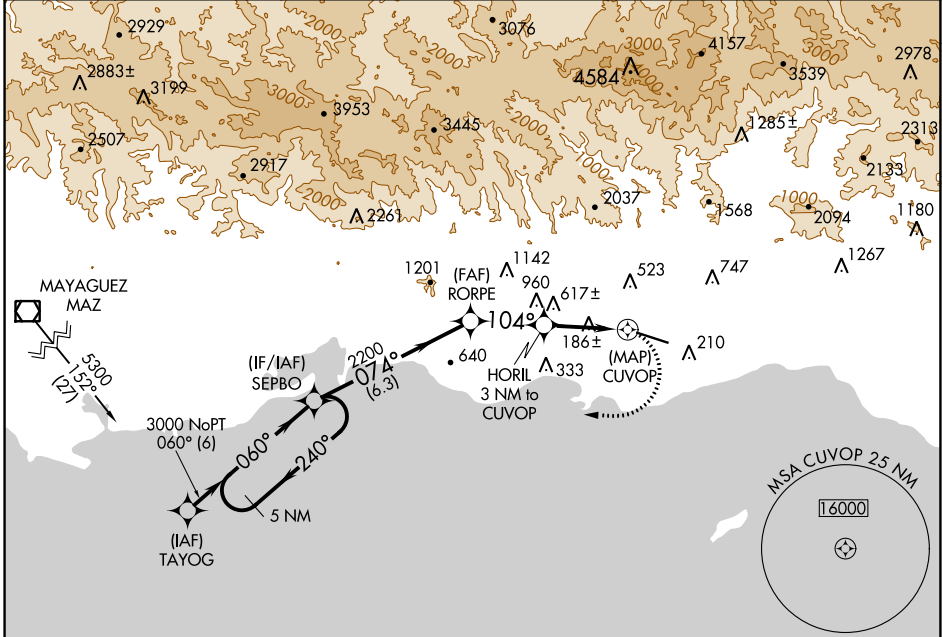
MERCEDITA (PSE) (TJPS)

RNP APCH-GPS.

▼ Obtain local altimeter setting on CTAF; when not received use Luis Munoz Marin Intl altimeter setting. Procedure NA at night. Rwy 12, 30 helicopter visibility reduction below 1 SM NA. Circling NA for Cats C and D northeast of Rwy 12-30.

MISSED APPROACH: Climbing right turn to 3000 direct SEPBO and hold.

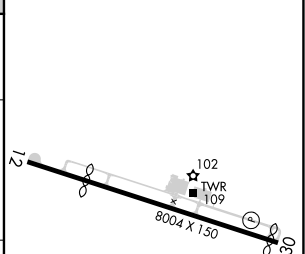
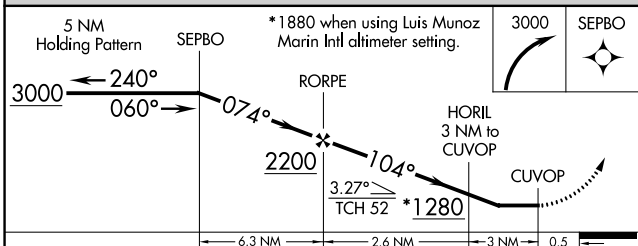
AWOS-3PT	SAN JUAN CENTER	CLNC DEL	UNICOM
118.4	118.75 269.0	121.9	122.7 (CTAF) 0



SE-3, 22 FEB 2024 to 21 MAR 2024

SE-3, 22 FEB 2024 to 21 MAR 2024

ELEV	28	D	TDZE	27
------	-----------	---	------	-----------



CATEGORY	A	B	C	D
RNAV MDA	880-1 853 (900-1)	880-1¼ 853 (900-1¼)	880-2½ 853 (900-2½)	880-2¾ 853 (900-2¾)
CIRCLING	880-1¼ 852 (900-1¼)	852 (900-1¼)	880-2½ 852 (900-2½)	1040-3 1012 (1100-3)
LUIS MUNOZ MARIN INTL ALTIMETER SETTING MINIMUMS				
RNAV MDA	NA			
CIRCLING	1480-1¼ 1452 (1500-1¼)	1480-1½ 1452 (1500-1½)	1480-3 1452 (1500-3)	1640-3 1612 (1700-3)

HIRL Rwy 12-30 0
REIL Rwy 12 and 30 0

APP CRS	Rwy Idg	6757
299°	TDZE	25
	Apt Elev	28

RNAV (GPS) RWY 30

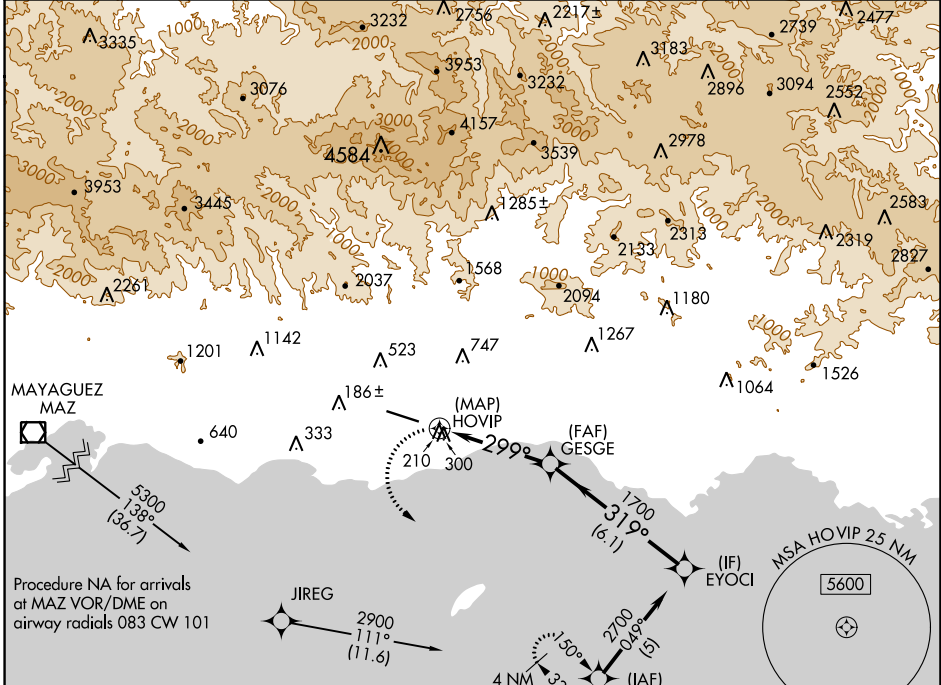
MERCEDITA (PSE) (TJPS)

RNP APCH.

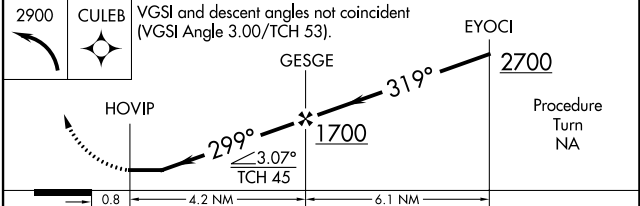
NA Rwy 12, 30 helicopter visibility reduction below 1 SM NA. Obtain local altimeter setting on CTAF; when not received, use Luis Munoz Marin Intl altimeter setting. Circling NA for Cats C and D northeast of Rwy 12-30.

MISSED APPROACH: Climbing left turn to 2900 direct CULEB and hold.

AWOS-3PT 118.4	SAN JUAN CENTER 118.75 269.0	CLNC DEL 121.9	UNICOM 122.7 (CTAF)
--------------------------	--	--------------------------	-------------------------------



ELEV	28	TDZE	25
------	-----------	------	-----------



CATEGORY	A	B	C	D
LNAV MDA	600-1 575 (600-1)		600-1½ 575 (600-1½)	600-1¾ 575 (600-1¾)
CIRCLING	840-1¼ 812 (900-1¼)		840-2½ 812 (900-2½)	1040-3 1012 (1100-3)
LUIS MUNOZ MARIN INTL ALTIMETER SETTING MINIMUMS				
LNAV MDA	1200-1¼ 1175 (1200-1¼)	1200-1½ 1175 (1200-1½)	1200-3 1175 (1200-3)	
CIRCLING	1440-1¼ 1412 (1500-1¼)	1440-1½ 1412 (1500-1½)	1440-3 1412 (1500-3)	1640-3 1612 (1700-3)

HIRL Rwy 12-30 **1**
REIL Rwy 12 and 30 **1**

SE-3, 22 FEB 2024 to 21 MAR 2024

SE-3, 22 FEB 2024 to 21 MAR 2024