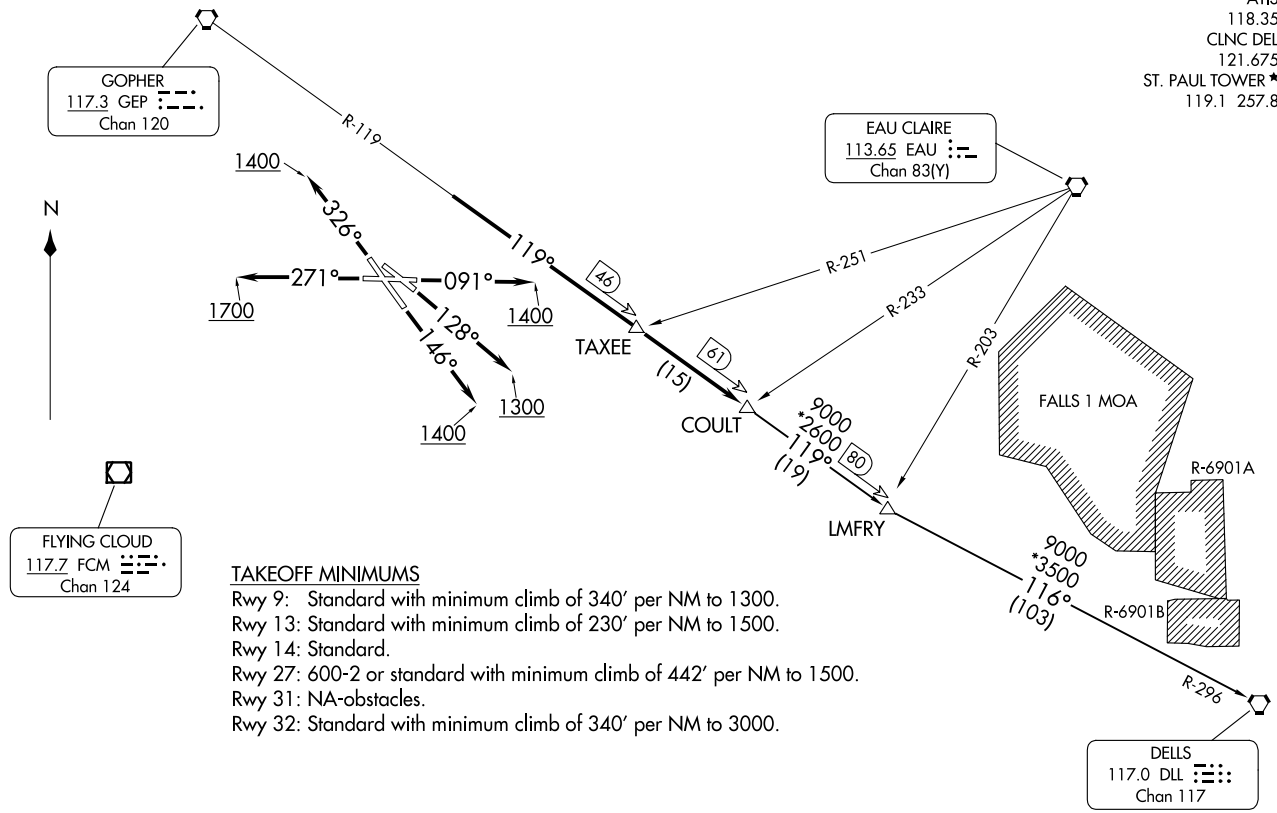


(COULT7, COULT) 23334
COULT SEVEN DEPARTURE

ST PAUL DOWNTOWN HOLMAN FLD (STP)
AL-263 (FAA)
ST PAUL, MINNESOTA

MINNEAPOLIS DEP CON
121.2 335.65
ATIS
118.35
CLNC DEL
121.675
ST. PAUL TOWER ★
119.1 257.8



TAKEOFF MINIMUMS

- Rwy 9: Standard with minimum climb of 340' per NM to 1300.
- Rwy 13: Standard with minimum climb of 230' per NM to 1500.
- Rwy 14: Standard.
- Rwy 27: 600-2 or standard with minimum climb of 442' per NM to 1500.
- Rwy 31: NA-obstacles.
- Rwy 32: Standard with minimum climb of 340' per NM to 3000.

NOTE: RADAR required.
NOTE: Chart not to scale.

(CONTINUED ON FOLLOWING PAGE)

COULT SEVEN DEPARTURE
(COULT7, COULT) 29MAR18

ST PAUL, MINNESOTA
ST PAUL DOWNTOWN HOLMAN FLD (STP)



DEPARTURE ROUTE DESCRIPTION

TAKEOFF RUNWAY 9: Climb heading 091° to 1400 for RADAR vectors to intercept GEP R-119 to COULT INT/GEP 61 DME, thence

TAKEOFF RUNWAY 13: Climb heading 128° to 1300 for RADAR vectors to intercept GEP R-119 to COULT INT/GEP 61 DME, thence

TAKEOFF RUNWAY 14: Climb heading 146° to 1400 for RADAR vectors to intercept GEP R-119 to COULT INT/GEP 61 DME, thence

TAKEOFF RUNWAY 27: Climb heading 271° to 1700 for RADAR vectors to intercept GEP R-119 to COULT INT/GEP 61 DME, thence

TAKEOFF RUNWAY 32: Climb heading 326° to 1400 for RADAR vectors to intercept GEP R-119 to COULT INT/GEP 61 DME, thence

. . . . on transition or assigned route. Expect clearance to filed altitude/flight level 10 (ten) minutes after departure.

DELLS TRANSITION (COULT7.DLL): From over COULT INT on GEP R-119 to LMFY INT then on DLL R-296 to DLL VORTAC.

NC-1, 22 FEB 2024 to 21 MAR 2024

NC-1, 22 FEB 2024 to 21 MAR 2024