

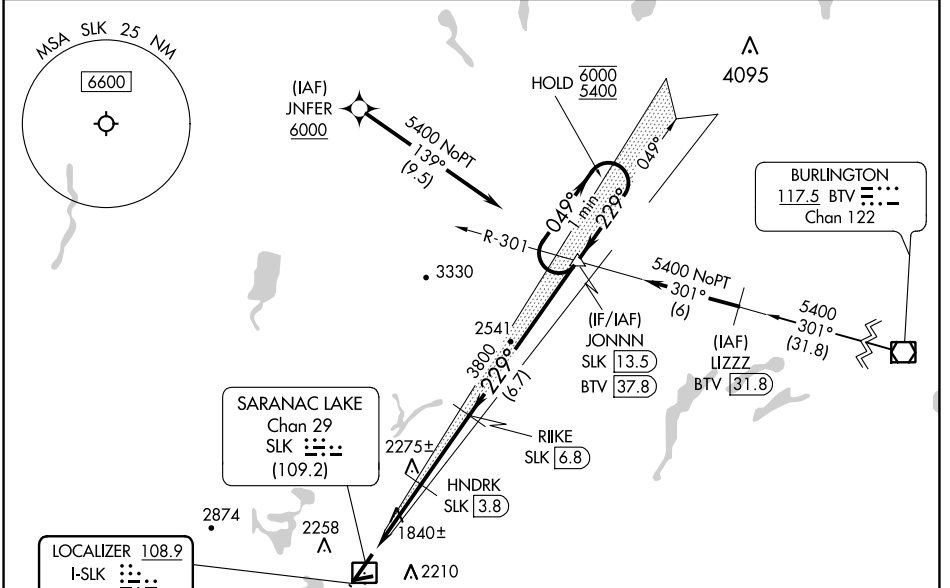
LOC I-SLK 108.9	APP CRS 229°	Rwy Idg TDZE Apt Elev	6333 1663 1663
---------------------------	------------------------	-----------------------------	---

ILS or LOC RWY 23

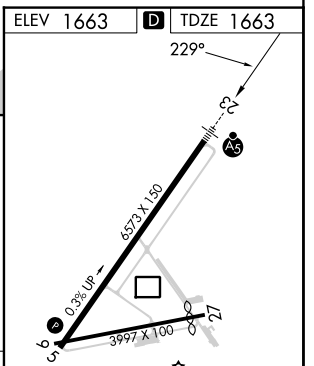
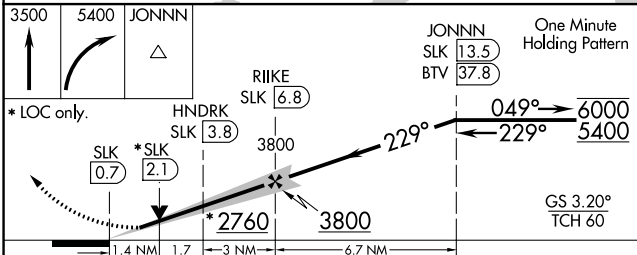
ADIRONDACK RGNL (SLK)

DME required. RNAV 1-GPS required.	MALSR 	MISSED APPROACH: Climb to 3500 then climbing right turn to 5400 direct JONNN and hold.
 Circling Rwy 5, 9, 27 NA at night. DME from SLK DME. Simultaneous reception of I-SLK and SLK DME required. LOC only Rwy 23 helicopter visibility reduction below 3/4 SM NA. For inop ALS, increase S-LOC 23 Cat A/B visibility to 1 SM.		

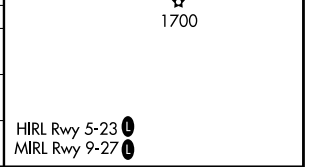
ASOS 124.175	BOSTON CENTER 120.35 342.25	UNICOM 123.0 (CTAF)
------------------------	---------------------------------------	-------------------------------



ELEV 1663	TDZE 1663
-----------	-----------



CATEGORY	A	B	C	D
S-ILS 23	1863-1/2		200 (200-1/2)	
S-LOC 23	2200-3/4	537 (600-3/4)	2200-1	537 (600-1)
CIRCLING	2500-1 1/4 837 (900-1 1/4)	2660-1 1/2 997 (1000-1 1/2)	2660-3 997 (1000-3)	2700-3 1037 (1100-3)



NE-2, 22 FEB 2024 to 21 MAR 2024

NE-2, 22 FEB 2024 to 21 MAR 2024