

(STYCK8.STYCK) 21280

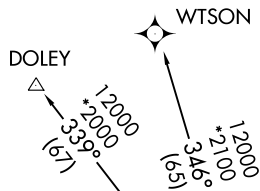
AL-5537 (FAA)

# STYCK EIGHT DEPARTURE (RNAV)

SUGAR LAND RGNL (SGR)

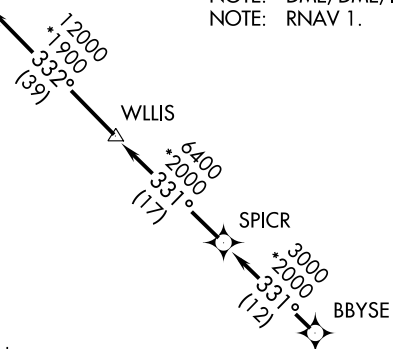
HOUSTON, TEXAS

**TOP ALTITUDE:  
ASSIGNED BY ATC**



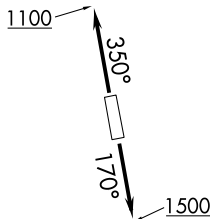
- ATIS ★ 118.125
- CLNC DEL 121.4
- CLNC DEL 119.25 (when twr closed)
- GND CON 121.4
- SUGARLAND TOWER ★ 118.65 (CTAF)
- HOUSTON DEP CON 123.8 257.7

- NOTE: RADAR required.
- NOTE: DME/DME/IRU or GPS required.
- NOTE: RNAV 1.



### TAKEOFF MINIMUMS

Rwys 17, 35: Standard with minimum climb of 500' per NM to 600.



NOTE: Chart not to scale.

## DEPARTURE ROUTE DESCRIPTION

TAKEOFF RUNWAY 17: Climb on heading 170° to 1500 for RADAR vectors to BBYSE, thence. . .

TAKEOFF RUNWAY 35: Climb on heading 350° to 1100 for RADAR vectors to BBYSE, thence. . .

. . . on track 331° to SPICR, then on track 331° to WLLIS, then on track 332° to STYCK, then on (transition). Maintain ATC assigned altitude. Expect filed altitude 10 minutes after departure.

DOLEY TRANSITION (STYCK8.DOLEY)

WTSON TRANSITION (STYCK8.WTSON)

# STYCK EIGHT DEPARTURE (RNAV)

(STYCK8.STYCK) 07OCT21

HOUSTON, TEXAS

SUGAR LAND RGNL (SGR)

SC-5, 22 FEB 2024 to 21 MAR 2024

SC-5, 22 FEB 2024 to 21 MAR 2024