

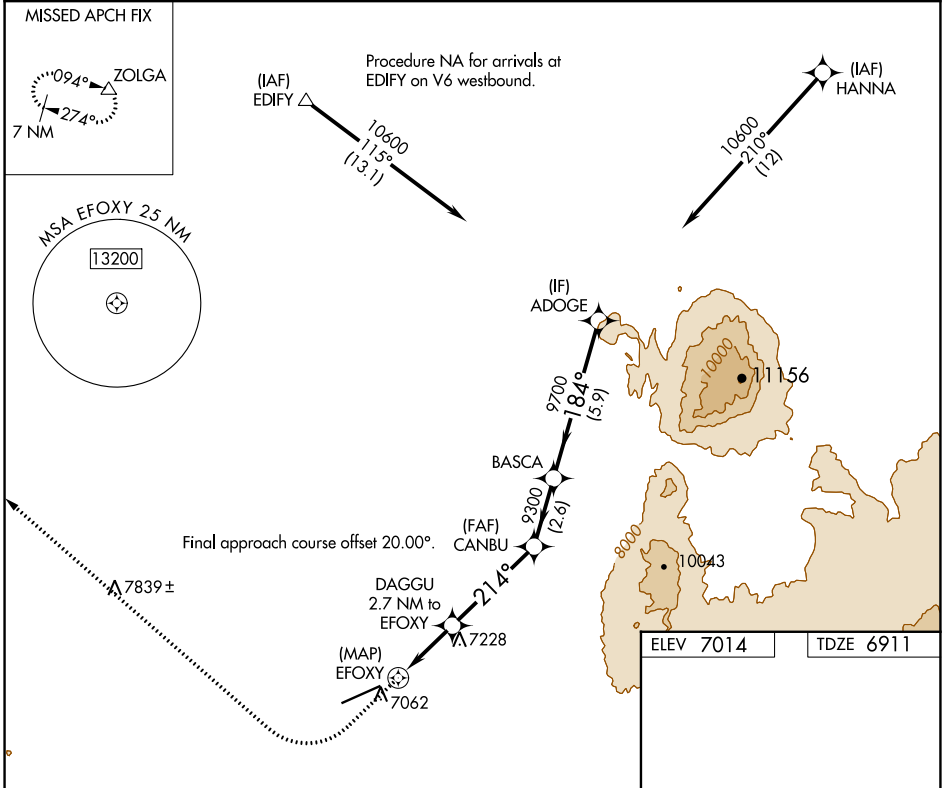
APP CRS 214°	Rwy Idg 8801
TDZE 6911	Apt Elev 7014

RNAV (GPS) RWY 23

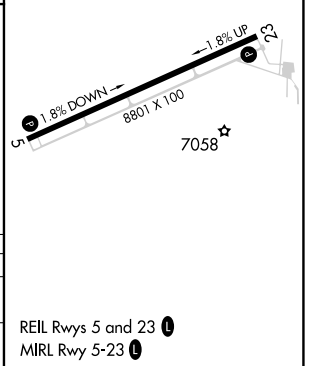
SHIVELY FLD (SAA)

RNP APCH - GPS.	MISSED APPROACH: Climb to 7800 then climbing right turn to 11000 direct ZOLGA and hold.
Rwy 23 helicopter visibility reduction below 3/4 SM NA.	

AWOS-3PT 118.175	DENVER CENTER 132.1 254.35	UNICOM 122.8 (CTAF) 0
----------------------------	--------------------------------------	---------------------------------



7800	11000	ZOLGA				
DAGGU 2.7 NM to EFOXY		CANBU		BASCA		
1.5 NM to EFOXY		3.00° TCH 47		184°		
EFOXY		9300		9700		
8000				10600		
0.7	1.5 NM	1.2 NM	4.1 NM	2.6 NM	5.9 NM	
CATEGORY	A		B		C	
LNVA MDA	7620-1 709 (700-1)		7620-2 709 (700-2)			
CIRCLING	7620-1 606 (700-1)		7740-2 726 (800-2)		7860-2 846 (900-2 3/4)	



NW-1, 22 FEB 2024 to 21 MAR 2024

NW-1, 22 FEB 2024 to 21 MAR 2024

REIL Rws 5 and 23 0
MIRL Rwy 5-23 0