

WAAS CH 60920 W32A	APP CRS 318°	Rwy Idg TDZE Apt Elev	7800 5045 5050
--	------------------------	-----------------------------	---

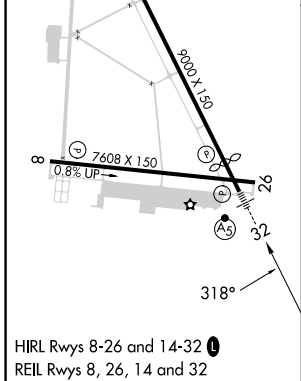
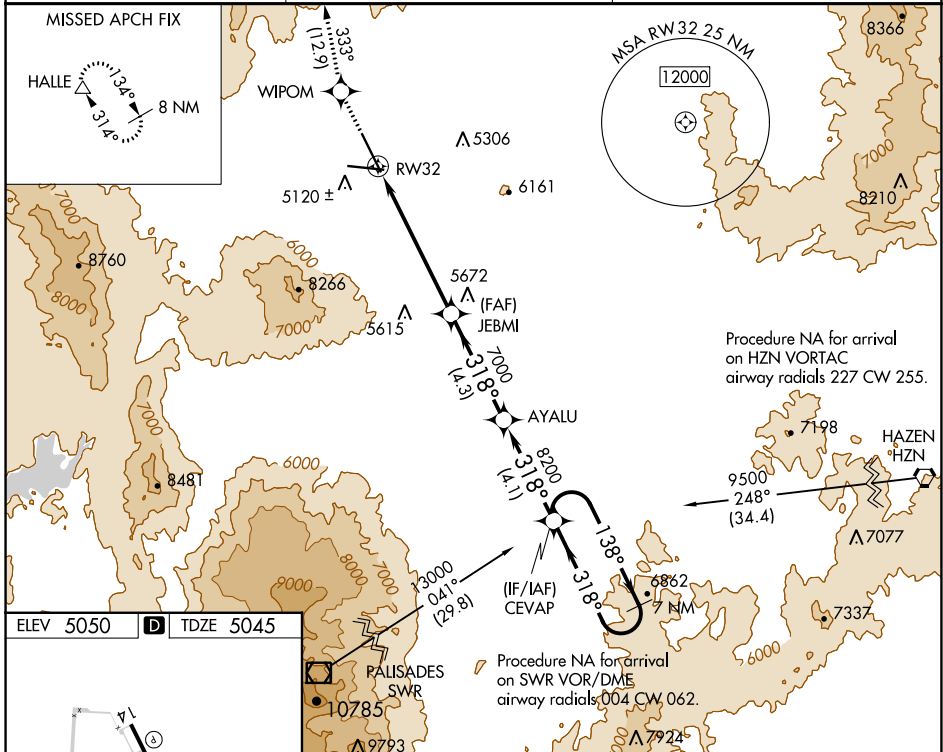
RNAV (GPS) RWY 32

RENO/STEAD (RTS)

NA When VGSi inoperative, Circling Rwy 8 NA at night. DME/DME RNP-0.3 NA. When local altimeter setting not received, use Reno/Tahoe Intl altimeter setting and increase all DA 115 feet and all MDA 120 feet. Inoperative table does not apply. Circling NA for Cat D southwest of Rwy 14-32.

MALS MISSED APPROACH: Climb to 14000 direct WIPOM and on track 333° to HALLE and hold, continue climb-in-hold to 14000.

AWOS-3 135.175	NORCAL APP CON 126.3 353.9	UNICOM 122.7 (CTAF)
--------------------------	--------------------------------------	-------------------------------



14000	WIPOM	tr 333°	HALLE
	JEBMI	AYALU	CEVAP 7 NM Holding Pattern
	RW32	7000	8200
	5.9 NM	4.3 NM	4.1 NM

CATEGORY	A	B	C	D
LPV DA	6533-6 1488 (1500-6)			
LNAV MDA	6840-1¼ 1795 (1800-1¼)	6840-1½ 1795 (1800-1½)	6840-3	1795 (1800-3)
CIRCLING	6840-1¼ 1790 (1800-1¼)	6840-1½ 1790 (1800-1½)	6840-3	1790 (1800-3)

SW-4, 22 FEB 2024 to 21 MAR 2024

SW-4, 22 FEB 2024 to 21 MAR 2024