

VORTAC PSX <b>117.3</b> Chan <b>120</b>	APP CRS <b>120°</b>	Rwy Idg TDZE <b>13</b> Apt Elev <b>14</b>	<b>5001</b>
---	------------------------	---	-------------

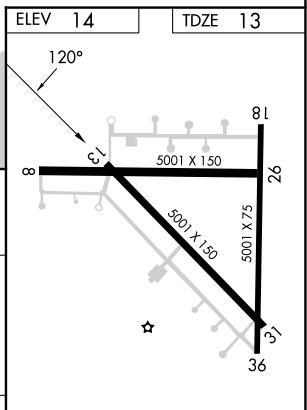
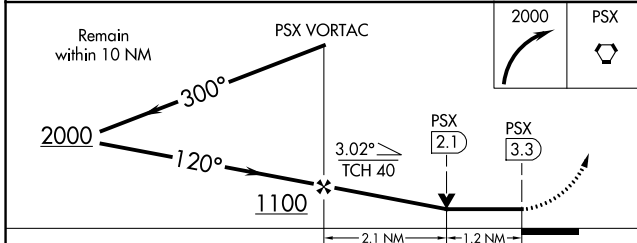
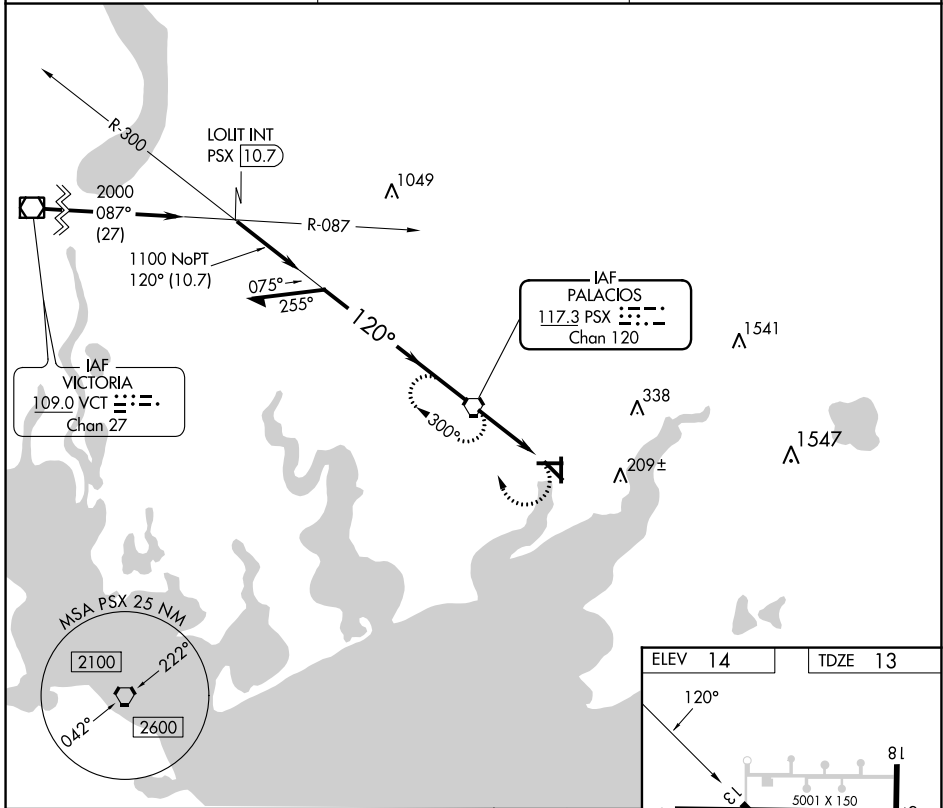
# VOR RWY 13

PALACIOS MUNI (PSX)

**⚠** When local altimeter setting not received, use Port Lavaca altimeter setting: increase all MDA's 60 feet and S-13 Cat C/D and Circling Cat C/D visibility ¼ SM. Rwy 13 helicopter visibility reduction below ¾ SM NA. Circling Rwy 8, 18, 26, 31, 36 NA at night.

**⚠** MISSED APPROACH: Climbing right turn to 2000 direct PSX VORTAC and hold.

ASOS <b>118.025</b>	HOUSTON CENTER <b>135.05 353.6</b>	UNICOM <b>122.8 (CTAF) 0</b>
------------------------	---------------------------------------	---------------------------------



CATEGORY	A	B	C	D
S-13		380-1 367 (400-1)		380-1¼ 367 (400-1¼)
CIRCLING	460-1 446 (500-1)	480-1 466 (500-1)	560-1½ 546 (600-1½)	700-2¼ 686 (700-2¼)

REIL Rwys 13 and 31	MIRL Rwy 13-31 0	FAF to MAP 3.3 NM			
Knots	60	90	120	150	180
Min:Sec	3:18	2:12	1:39	1:19	1:06

SC-5, 22 FEB 2024 to 21 MAR 2024

SC-5, 22 FEB 2024 to 21 MAR 2024