

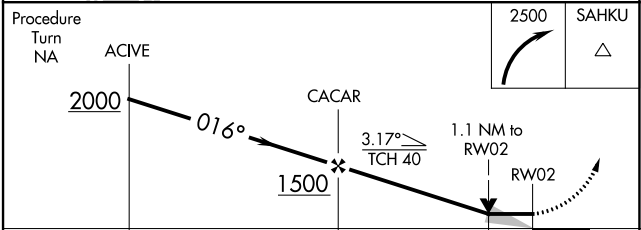
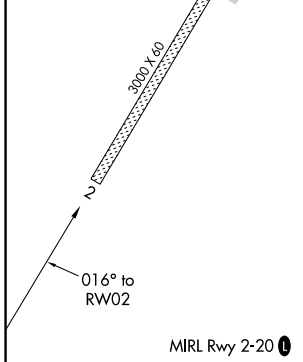
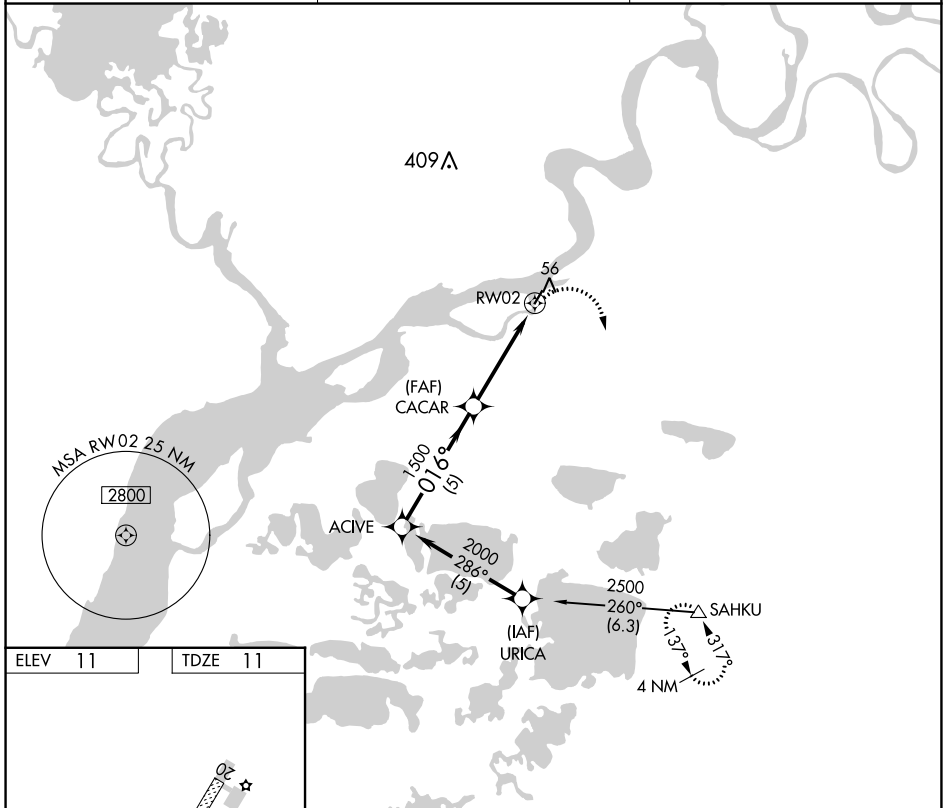
APP CRS <b>016°</b>	Rwy Idg <b>3000</b>
	TDZE <b>11</b>
	Apt Elev <b>11</b>

# RNAV (GPS) RWY 2

NAPASKIAK (PKA) (PAPK)

RNP APCH-GPS.	MISSED APPROACH: Climbing right turn to 2500 direct SAHKU WP and hold.
NA Use Bethel altimeter setting.	

BET/PABE ASOS <b>135.45</b>	ANCHORAGE CENTER <b>125.2 372.0</b>	CTAF <b>122.9</b>
--------------------------------	--	----------------------



Procedure Turn NA	ACIVE	CACAR	2500 SAHKU
	2000	1500	
	5 NM	3.2 NM	1.1 NM
CATEGORY	A	B	C
LNAV MDA	420-1	409 (500-1)	NA
CIRCLING	440-1 429 (500-1)	580-1 569 (600-1)	NA

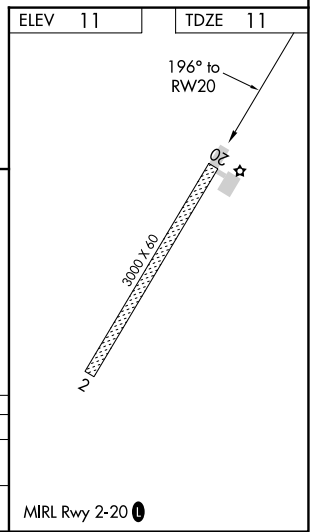
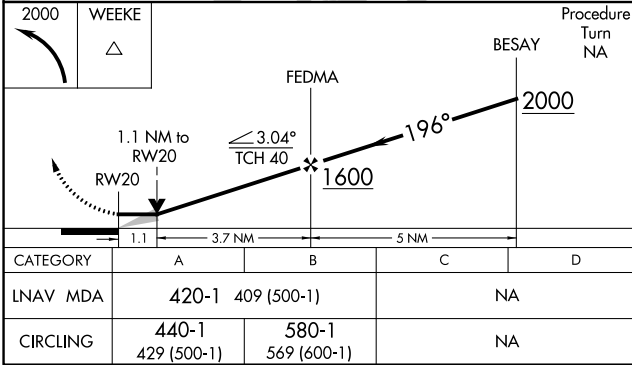
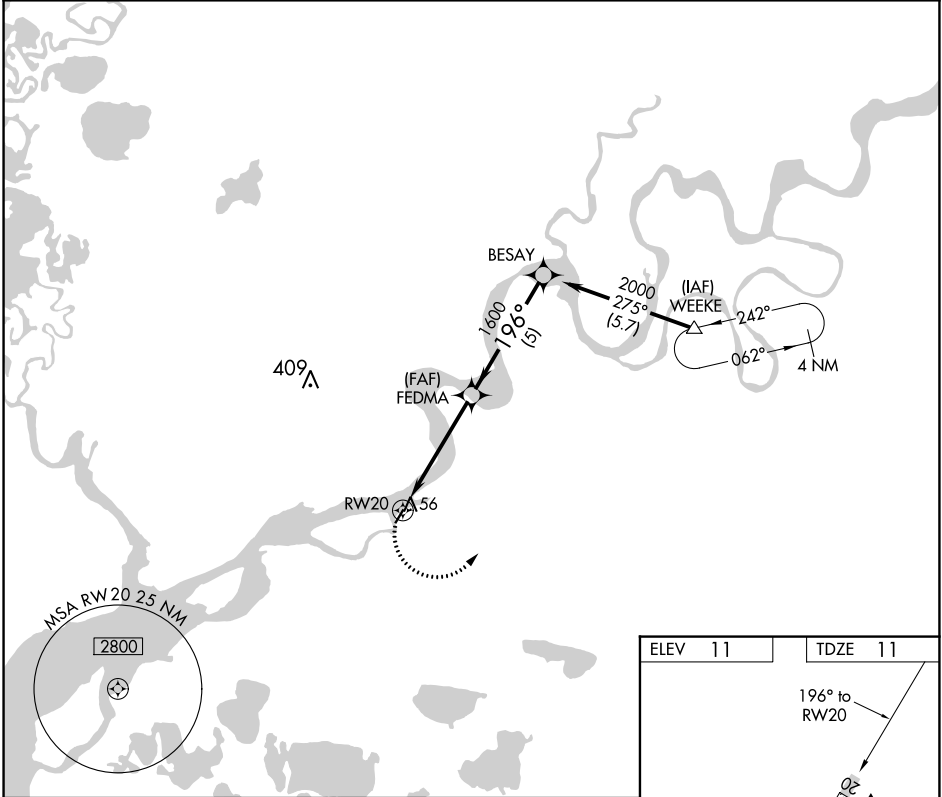
APP CRS <b>196°</b>	Rwy Idg TDZE Apt Elev	<b>3000</b> <b>11</b> <b>11</b>
------------------------	-----------------------------	---------------------------------------

# RNAV (GPS) RWY 20

NAPASKIAK (PKA) (PAPK)

RNP APCH-GPS.	MISSED APPROACH: Climbing left turn to 2000 direct WEEKE WP and hold.
Use Bethel altimeter setting.	

BET/PABE ASOS <b>135.45</b>	ANCHORAGE CENTER <b>125.2 372.0</b>	CTAF <b>122.9</b>
--------------------------------	--	----------------------



AK, 25 JAN 2024 to 21 MAR 2024

AK, 25 JAN 2024 to 21 MAR 2024