

WAAS CH <b>82543</b> <b>W15A</b>	APP CRS <b>154°</b>	Rwy Idg TDZE Apt Elev	<b>5001</b> <b>1586</b> <b>1586</b>
--	------------------------	-----------------------------	---

# RNAV (GPS) RWY 15L

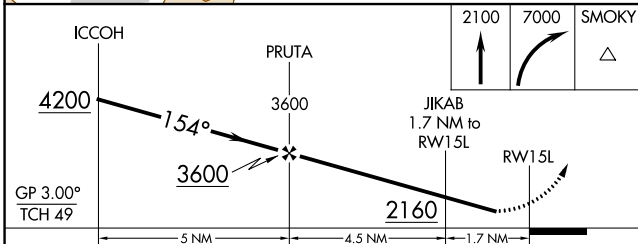
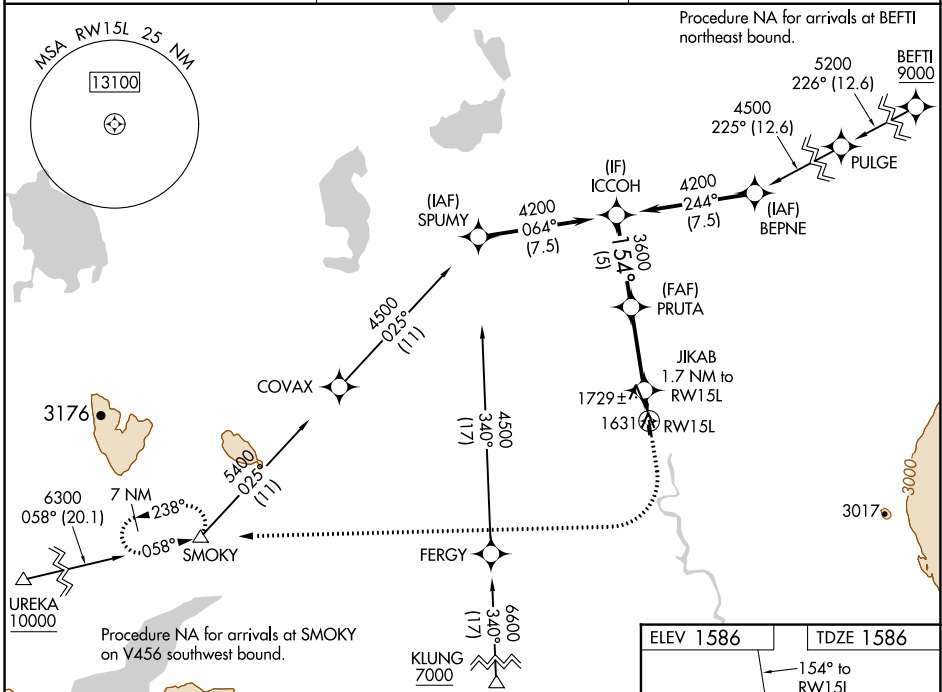
GULKANA (GKN) (PAGK)

RNP APCH-GPS.

⚠ Circling Rwy 15R, 33L NA at night. Rwy 15L helicopter visibility reduction below ¾ SM NA. For uncompensated Baro-VNAV systems, LNAV/VNAV NA below -21°C or above 54°C.

MISSED APPROACH: Climb to 2100 then climbing right turn to 7000 direct SMOKY and hold, continue climb-in-hold to 7000.

ASOS <b>134.85</b>	ANCHORAGE CENTER <b>119.5 317.5</b>	CTAF <b>122.9</b>
-----------------------	--	----------------------



ELEV 1586	TDZE 1586
MIRL Rwy 15L-33R	

CATEGORY	A	B	C	D
LNAV/VNAV DA		1836-1	250 (300-1)	
LPV DA		1877-1	291 (300-1)	
LNAV MDA	2040-1	454 (500-1)	2040-1 ¾	454 (500-1 ¾)
CIRCLING	2040-1 454 (500-1)	2080-1 494 (500-1)	2080-1 ½ 494 (500-1 ½)	2200-2 614 (700-2)

AK, 25 JAN 2024 to 21 MAR 2024

AK, 25 JAN 2024 to 21 MAR 2024

WAAS CH <b>40343</b> <b>W33A</b>	APP CRS <b>334°</b>	Rwy Idg TDZE Apt Elev	<b>5001</b> <b>1573</b> <b>1586</b>
--	------------------------	-----------------------------	---

# RNAV (GPS) RWY 33R

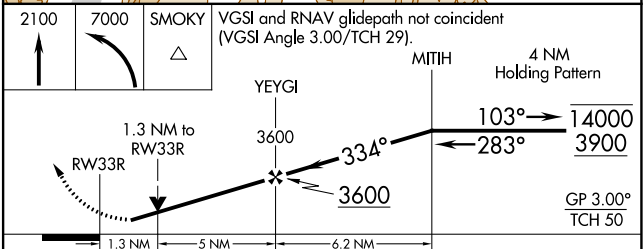
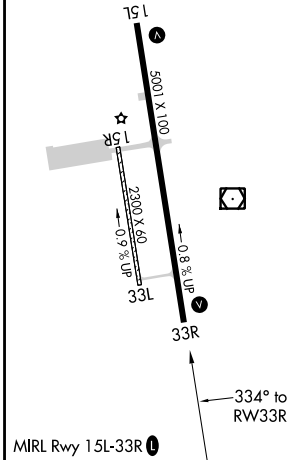
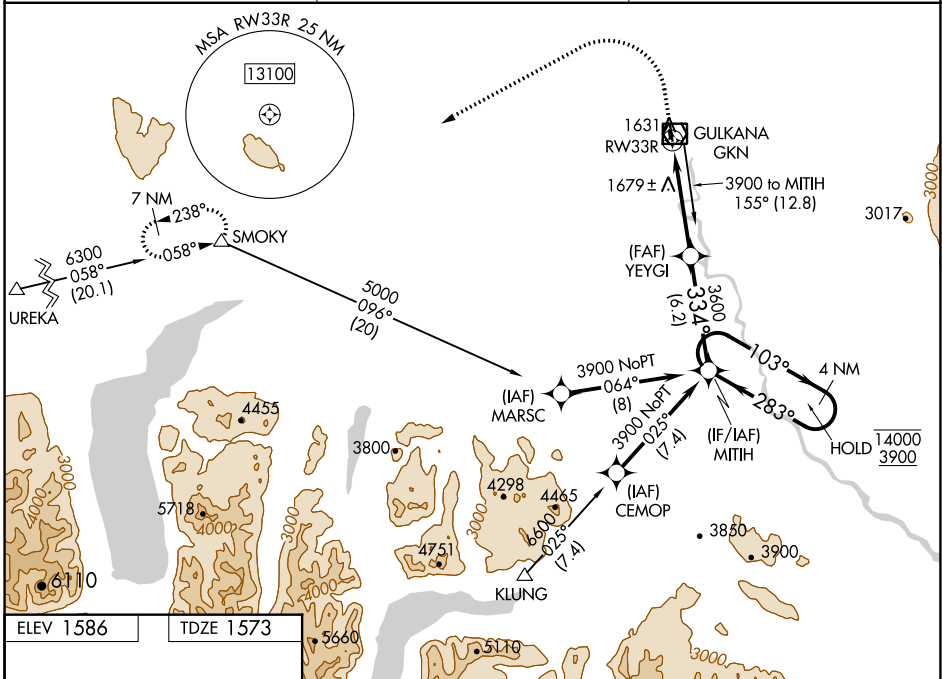
GULKANA (GKN) (PAGK)

RNP APCH-GPS.

▼ Circling Rwy 15R, 33L NA at night. Rwy 33R helicopter visibility reduction below 3/4 SM NA. For uncompensated Baro-VNAV systems, LNAV/VNAV NA below -25°C or above 54°C.

MISSED APPROACH: Climb to 2100 then climbing left turn to 7000 direct SMOKY and hold, continue climb-in-hold to 7000.

ASOS <b>134.85</b>	ANCHORAGE CENTER <b>119.5 317.5</b>	CTAF <b>122.9</b>
-----------------------	--	----------------------



CATEGORY	A	B	C	D
LPV DA		1823-1	250 (300-1)	
LNAV/VNAV DA		1890-1	317 (400-1)	
LNAV MDA	2000-1	427 (500-1)	2000-1 1/4	427 (500-1 1/4)
<b>C</b> CIRCLING	2040-1 454 (500-1)	2080-1 494 (500-1)	2080-1 1/2 494 (500-1 1/2)	2200-2 614 (700-2)

AK, 25 JAN 2024 to 21 MAR 2024

AK, 25 JAN 2024 to 21 MAR 2024

VOR/DME GKN <b>115.6</b> Chan <b>103</b>	APP CRS <b>148°</b>	Rwy Ldg <b>5001</b> TDZE <b>1586</b> Apt Elev <b>1586</b>
--	------------------------	---

# VOR RWY 15L

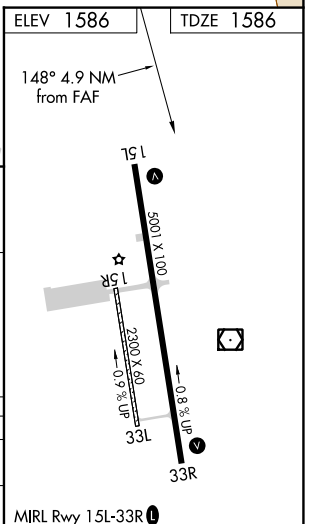
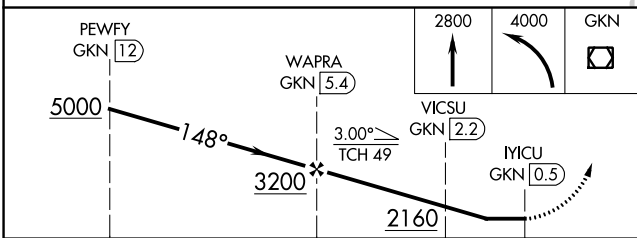
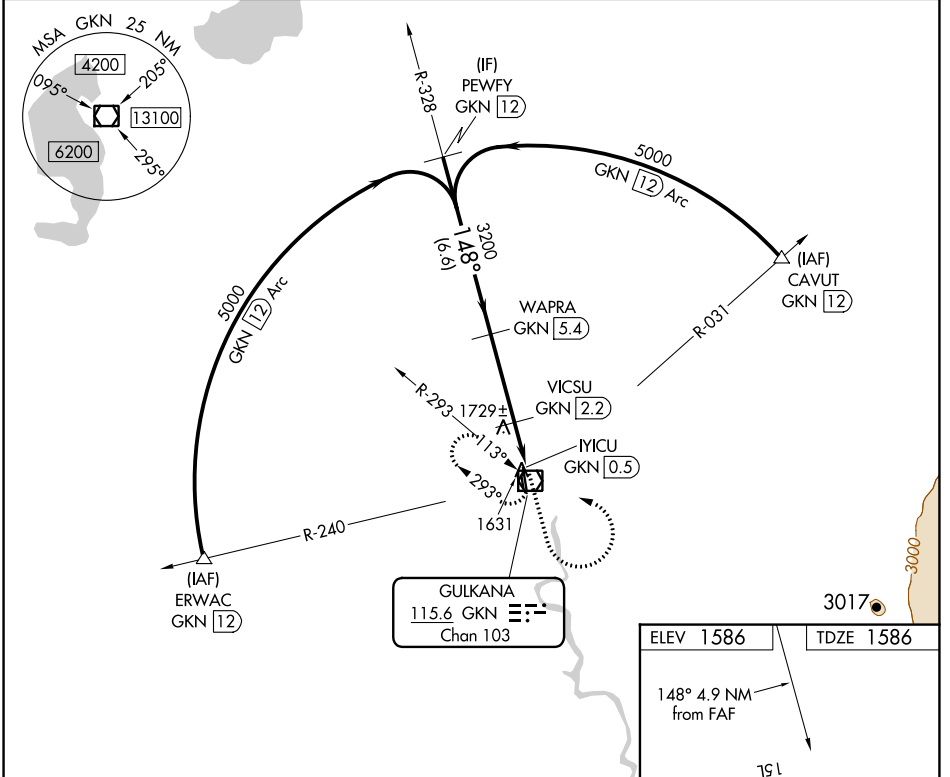
GULKANA (GKN) (PAGK)

**DME required.**

⚠ Circling Rwy 15R, 33L NA at night. Rwy 15L helicopter visibility reduction below 3/4 SM NA. When local altimeter setting not received, procedure NA.

MISSED APPROACH: Climb to 2800 then climbing left turn to 4000 direct GKN VOR/DME and hold, continue climb-in-hold to 4000.

ASOS <b>134.85</b>	ANCHORAGE CENTER <b>119.5 317.5</b>	CTAF <b>122.9 0</b>
-----------------------	--	------------------------



CATEGORY	A	B	C	D
S-15L	2040-1	454 (500-1)	2040-1 3/8	454 (500-1 3/8)
<b>C</b> CIRCLING	2040-1 454 (500-1)	2080-1 494 (500-1)	2080-1 1/2 494 (500-1 1/2)	2200-2 614 (700-2)

AK, 25 JAN 2024 to 21 MAR 2024

AK, 25 JAN 2024 to 21 MAR 2024

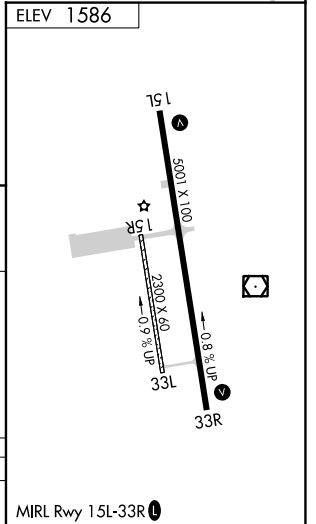
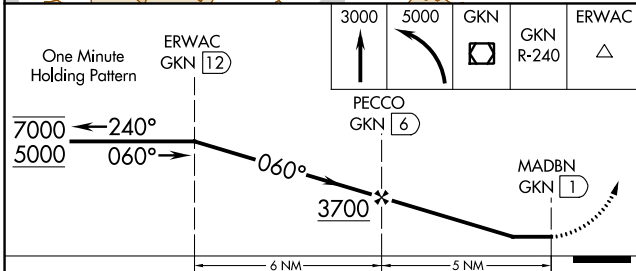
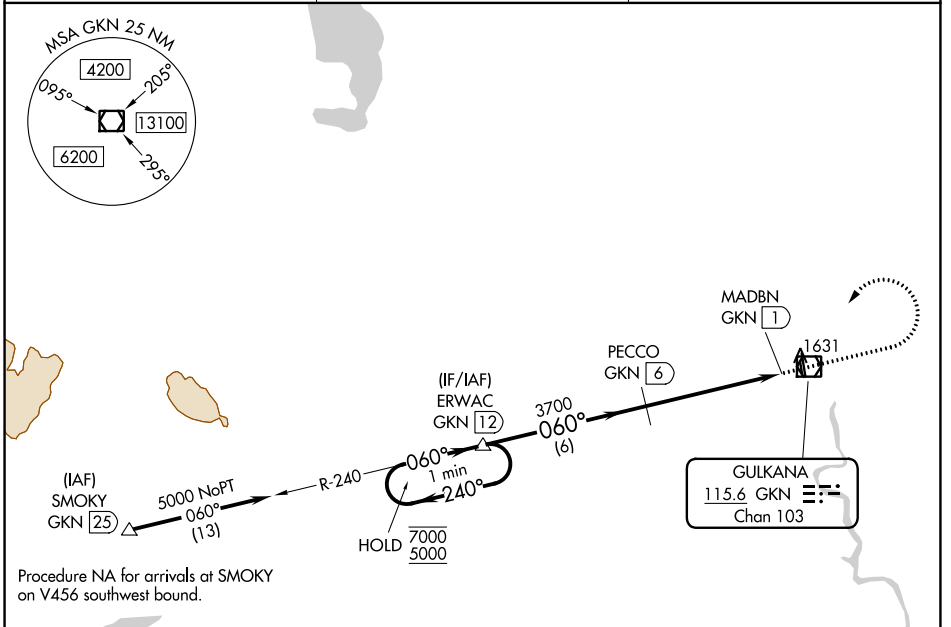
VOR/DME GKN <b>115.6</b> Chan <b>103</b>	APP CRS <b>060°</b>	Rwy Idg TDZE Apt Elev <b>1586</b>	<b>N/A</b> <b>N/A</b>
--	------------------------	---	--------------------------

# VOR-A

GULKANA (GKN) (PAGK)

DME required.	MISSED APPROACH: Climb to 3000 then climbing left turn to 5000 direct GKN VOR/DME and continue on GKN R-240 to ERWAC/GKN 12 DME and hold.
<p>⚠ Circling to Rwy 15R, Rwy 33L NA at night. Rwy 15R, 33L helicopter visibility reduction below 1 SM NA.</p>	

ASOS <b>134.85</b>	ANCHORAGE CENTER <b>119.5 317.5</b>	CTAF <b>122.9 0</b>
-----------------------	--	------------------------



CATEGORY	A	B	C	D
Ⓢ CIRCLING	2060-1 474 (500-1)	2080-1 494 (500-1)	2080-1½ 494 (500-1½)	2200-2 614 (700-2)

AK, 25 JAN 2024 to 21 MAR 2024

AK, 25 JAN 2024 to 21 MAR 2024