

LOC/DME I-ENA <b>108.9</b> Chan 26	APP CRS <b>196°</b>	Rwy ldg <b>7575</b> TDZE <b>98</b> Apt Elev <b>100</b>
--	------------------------	--

# ILS Y or LOC Y RWY 20R

KENAI MUNI (ENA) (PAEN)

TACAN required.

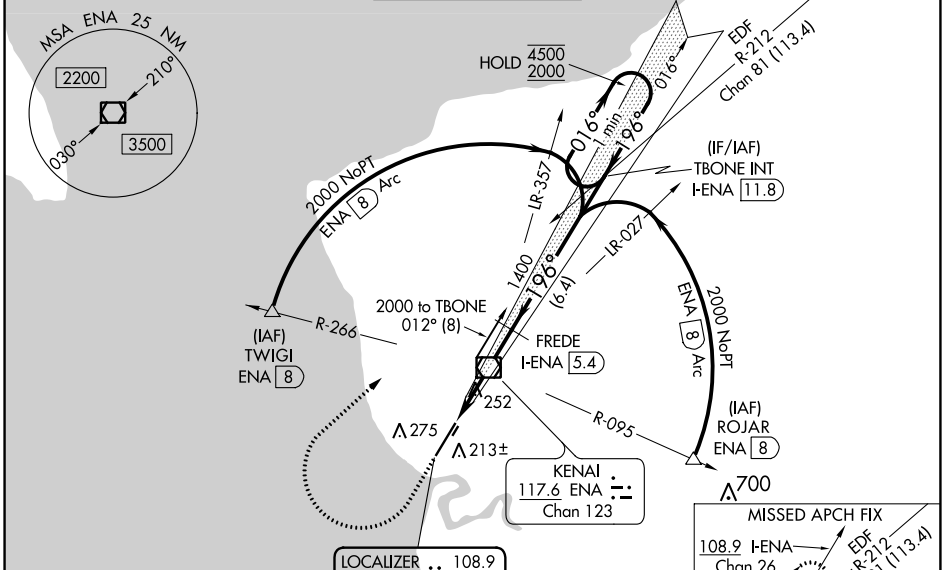
**⚠** Circling NA to Rwys 2W and 20W. Circling Rwy 2R, 20L NA at night. For inop ALS, increase S-ILS 20R Cat E visibility to RVR 4000. For inop ALS, increase S-LOC 20R Cat E visibility to 1 1/4 SM.  
# RVR 1800 authorized with use of FD or AP or HUD to DA.

**MALS**R

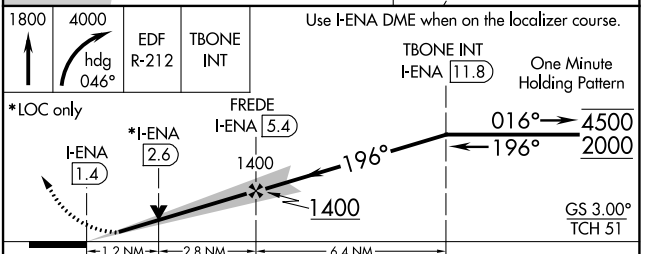
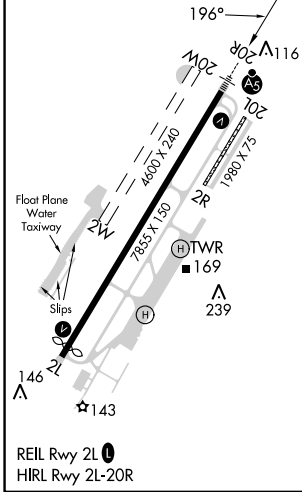
MISSED APPROACH: Climb to 1800 then climbing right turn to 4000 on heading 046° and on EDF TACAN R-212 to TBONE INT/EDF 49.2 DME and hold.

† Missed approach requires minimum climb of 800 feet per NM to 4000; if unable to meet climb gradient, see ILS Z or LOC Z RWY 20R.

ATIS <b>133.35</b>	ANCHORAGE CENTER <b>125.7 379.1</b>	KENAI TOWER* <b>121.3 (CTAF) 239.3</b>	GND CON <b>118.75</b>	KENAI RADIO <b>122.65</b>
-----------------------	--	---	--------------------------	------------------------------



ELEV 100	<b>D</b>	TDZE 98
----------	----------	---------



CATEGORY	A	B	C	D	E
S-ILS 20R #†	298/24 200 (200-1/2)				
S-LOC 20R †	520/24	422 (500-1/2)	520/40 422 (500-3/4)		
<b>C</b> CIRCLING	560-1 460 (500-1)	580-1 480 (500-1)	580-1 1/2 480 (500-1 1/2)	680-2 580 (600-2)	760-2 1/4 660 (700-2 1/4)

AK, 25 JAN 2024 to 21 MAR 2024

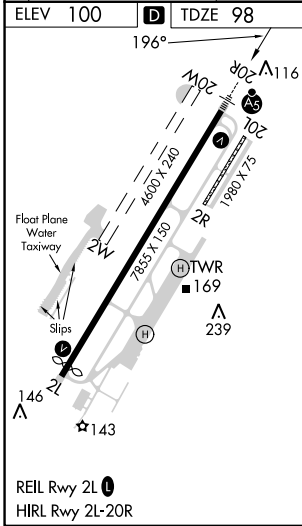
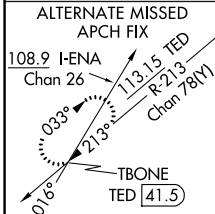
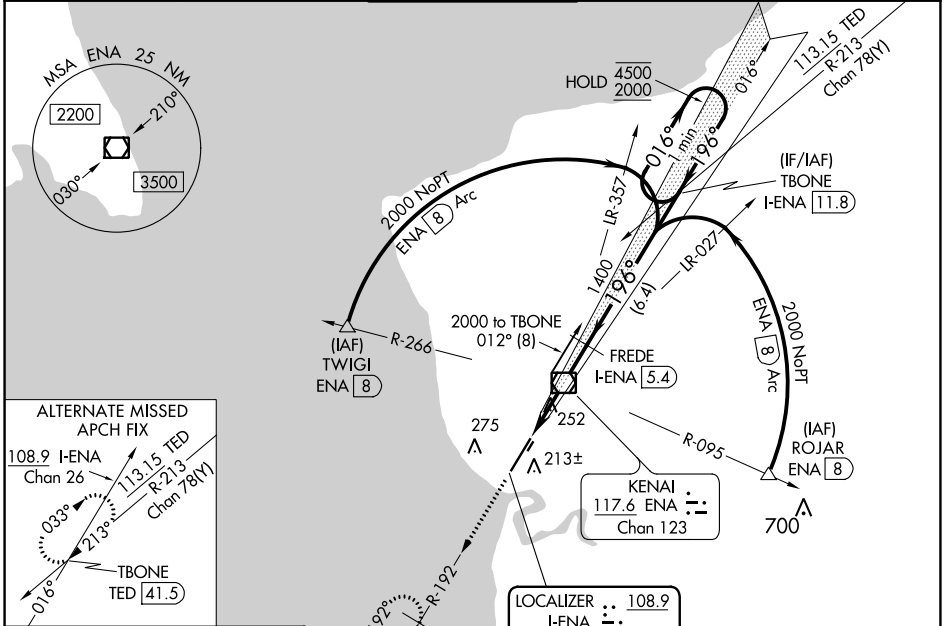
AK, 25 JAN 2024 to 21 MAR 2024

LOC/DME I-ENA <b>108.9</b> Chan 26	APP CRS <b>196°</b>	Rwy ldg <b>7575</b> TDZE <b>98</b> Apt Elev <b>100</b>
--	------------------------	--

# ILS Z or LOC Z RWY 20R

KENAI MUNI (ENA) (PAEN)

DME required. ▼ Circling NA to Rwys 2W and 20W. Circling Rwy 2R, 20L NA at night. # RVR 1800 authorized with use of FD or AP or HUD to DA.		MALSR 	MISSED APPROACH: Climb to 2200 on ENA VOR/DME R-192 to DIXIT/10 DME and hold.	
ATIS <b>133.35</b>	ANCHORAGE CENTER <b>125.7 379.1</b>	KENAI TOWER ★ <b>121.3 (CTAF) 239.3</b>	GND CON <b>118.75</b>	KENAI RADIO <b>122.65</b>



ELEV 100	<b>D</b> TDZE 98																		
<table border="1"> <tr> <td>2200</td> <td>DIXIT ENA (10)</td> <td>Use I-ENA DME when on the localizer course.</td> </tr> <tr> <td>ENA R-192</td> <td>FREDE I-ENA (5.4)</td> <td>TBONE I-ENA (11.8)</td> </tr> <tr> <td>*LOC only</td> <td>*I-ENA (2.6)</td> <td>One Minute Holding Pattern</td> </tr> <tr> <td>I-ENA (1.4)</td> <td>1400</td> <td>4500/2000</td> </tr> <tr> <td>1.2 NM</td> <td>2.8 NM</td> <td>6.4 NM</td> </tr> <tr> <td>GS 3.00°</td> <td>TCH 51</td> <td></td> </tr> </table>		2200	DIXIT ENA (10)	Use I-ENA DME when on the localizer course.	ENA R-192	FREDE I-ENA (5.4)	TBONE I-ENA (11.8)	*LOC only	*I-ENA (2.6)	One Minute Holding Pattern	I-ENA (1.4)	1400	4500/2000	1.2 NM	2.8 NM	6.4 NM	GS 3.00°	TCH 51	
2200	DIXIT ENA (10)	Use I-ENA DME when on the localizer course.																	
ENA R-192	FREDE I-ENA (5.4)	TBONE I-ENA (11.8)																	
*LOC only	*I-ENA (2.6)	One Minute Holding Pattern																	
I-ENA (1.4)	1400	4500/2000																	
1.2 NM	2.8 NM	6.4 NM																	
GS 3.00°	TCH 51																		
CATEGORY	A	B	C	D															
S-ILS 20R#	298/24 200 (200-1/2)																		
S-LOC 20R	520/24 422 (500-1/2)	520/40 422 (500-3/4)																	
<b>C</b> CIRCLING	560-1 460 (500-1)	580-1 480 (500-1)	580-1 1/2 480 (500-1/2)	680-2 580 (600-2)															

AK, 25 JAN 2024 to 21 MAR 2024

AK, 25 JAN 2024 to 21 MAR 2024

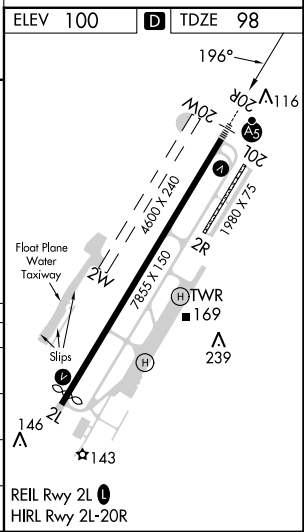
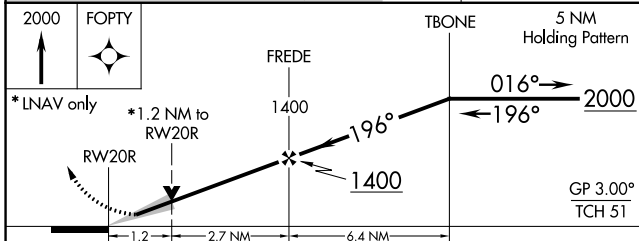
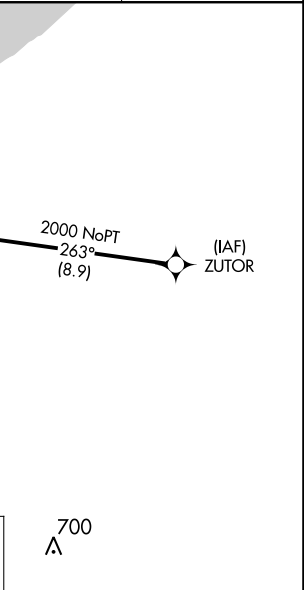
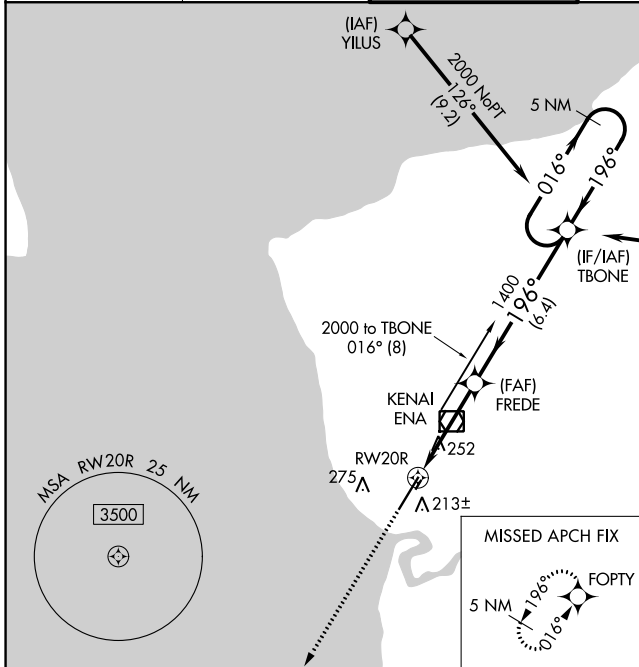
WAAS CH <b>99504</b> <b>W20A</b>	APP CRS <b>196°</b>	Rwy Idg <b>7575</b> TDZE <b>98</b> Apt Elev <b>100</b>
--	------------------------	--

# RNAV (GPS) RWY 20R

KENAI MUNI (ENA) (PAEN)

RNP APCH	<p><b>⚠</b> For uncompensated Baro-VNAV systems, LNAV/VNAV NA below -18°C (0°F) or above 54°C (130°F). Baro-VNAV and VDP NA when using Soldotna altimeter setting. Circling Rwy 2R, 20L NA at night. When local altimeter setting not received, use Soldotna altimeter setting and increase all DA 22 feet and all MDA 40 feet, increase LNAV visibility Cat C and D to RVR 5000. Circling Rwy 2W, 20W NA. # RVR 1800 authorized with use of FD or AP or HUD to DA. (NA when using Soldotna altimeter setting).</p>	MALSR 	MISSED APPROACH: Climb to 2000 direct FOPTY and hold.
----------	---	-----------	--

ATIS <b>133.35</b>	ANCHORAGE CENTER <b>125.7 379.1</b>	KENAI TOWER* <b>121.3 (CTAF) 239.3</b>	GND CON <b>118.75</b>	KENAI RADIO <b>122.65</b>
-----------------------	--	---	--------------------------	------------------------------



CATEGORY	A	B	C	D
LPV DA#		298/24	200 (200-½)	
LNAV/VNAV DA		348/24	250 (300-½)	
LNAV MDA	520/24	422 (500-½)	520/40	422 (500-¾)
CIRCLING	560-1 460 (500-1)	580-1 480 (500-1)	580-1½ 480 (500-1½)	680-2 580 (600-2)

AK, 25 JAN 2024 to 21 MAR 2024

AK, 25 JAN 2024 to 21 MAR 2024

WAAS CH <b>69404</b> <b>W02A</b>	APP CRS <b>016°</b>	Rwy Idg TDZE Apt Elev	<b>7575</b> <b>94</b> <b>100</b>
--	------------------------	-----------------------------	--

# RNAV (GPS) RWY 2L

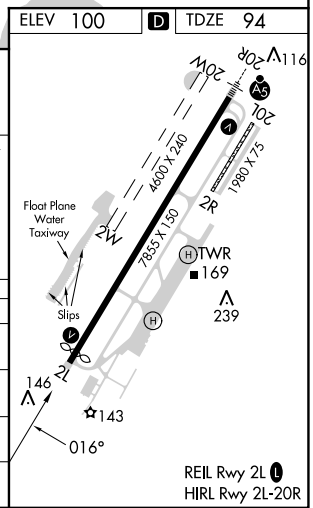
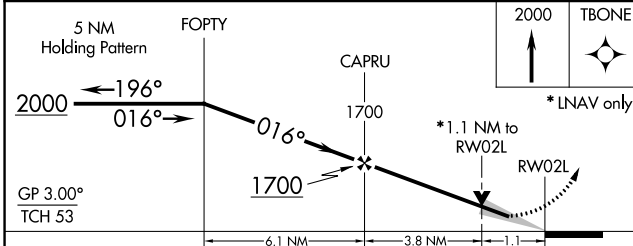
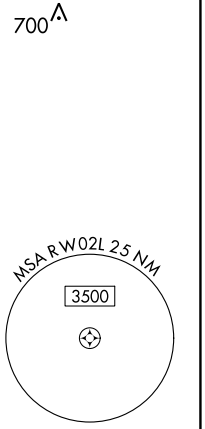
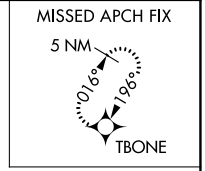
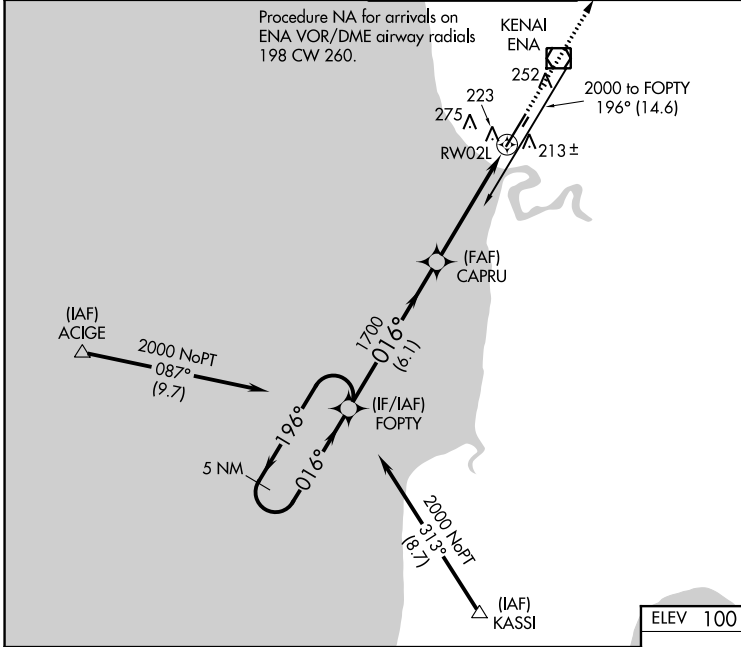
KENAI MUNI (ENA) (PAEN)

RNP APCH.

**⚠** Baro-VNAV NA when using Soldotna altimeter setting. For uncompensated Baro-VNAV systems, LNAV/VNAV NA below -18°C (0°F) or above 54°C (130°F). When local altimeter setting not received, use Soldotna altimeter setting: increase LPV DA to 366 feet and LNAV/VNAV DA to 429 feet and all MDA 40 feet; increase LPV and LNAV/VNAV visibility all Cats and LNAV Cat C/D visibility 1/8 mile; increase Circling Cat D visibility 1/4 mile. VDP NA when using Soldotna altimeter setting. Circling Rwy 2R, 20L NA at night. Circling Rwy 2W, 20W NA.

**MISSED APPROACH:**  
Climb to 2000 direct TBONE and hold.

ATIS <b>133.35</b>	ANCHORAGE CENTER <b>125.7 379.1</b>	KENAI TOWER* <b>121.3 (CTAF) 239.3</b>	GND CON <b>118.75</b>	KENAI RADIO <b>122.65</b>
-----------------------	--	---	--------------------------	------------------------------



CATEGORY	A	B	C	D
LPV DA	344-3/4 250 (300-3/4)			
LNAV/VNAV DA	407-1 313 (400-1)			
LNAV MDA	480-1 386 (400-1)		480-1 1/8 386 (400-1 1/8)	
<b>C</b> CIRCLING	560-1 460 (500-1)	580-1 480 (500-1)	580-1 1/2 480 (500-1 1/2)	740-2 640 (700-2)

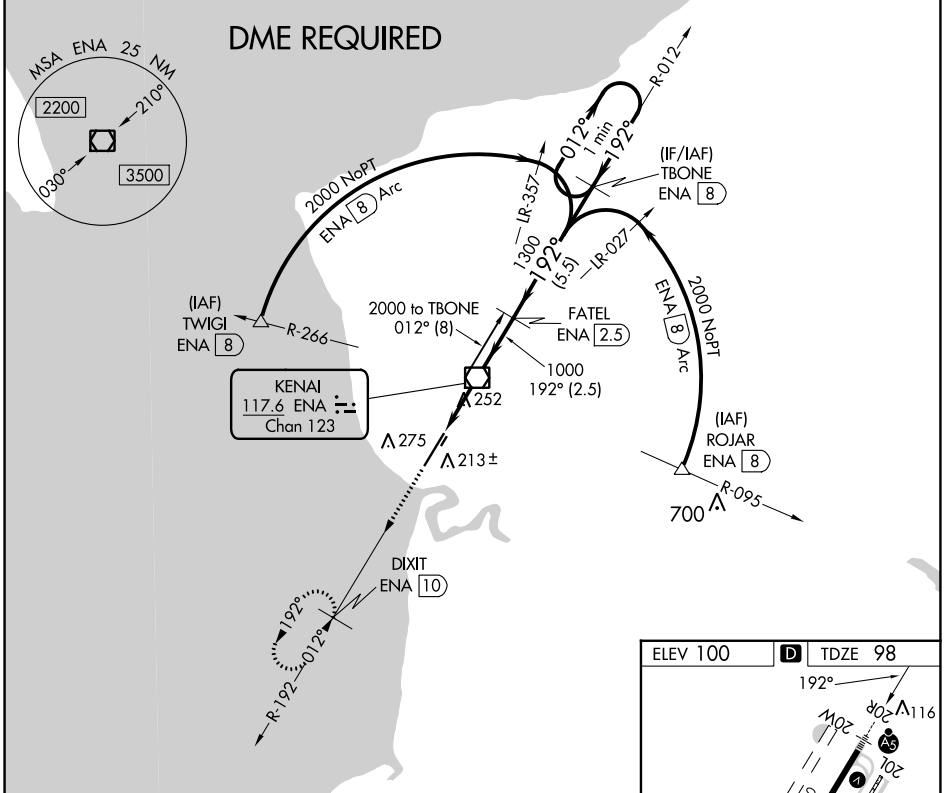
VOR/DME ENA <b>117.6</b> Chan <b>123</b>	APP CRS <b>192°</b>	Rwy ldg <b>7575</b> TDZE <b>98</b> Apt Elev <b>100</b>
--	------------------------	--

# VOR RWY 20R

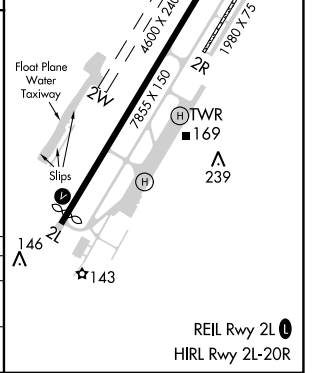
KENAI MUNI (ENA) (PAEN)

<p>Circling Rwy 2R, 20L NA at night. DME required. VDP NA when using Soldotna altimeter setting. When local altimeter setting not received, use Soldotna altimeter setting and increase all MDA 40 feet, increase S-20R Cats C and D visibility to RVR 5000. Circling Rwy 2W, 20W NA.</p>	<p>MALS R</p>	<p>MISSED APPROACH: Climb to 2200 on ENA VOR/DME R-192 to DIXIT/ENA VOR/DME 10 DME and hold.</p>		
			<p>ATIS <b>133.35</b></p>	<p>ANCHORAGE CENTER <b>125.7 379.1</b></p>

ATIS <b>133.35</b>	ANCHORAGE CENTER <b>125.7 379.1</b>	KENAI TOWER* <b>121.3 (CTAF) 239.3</b>	GND CON <b>118.75</b>	KENAI RADIO <b>122.65</b>
-----------------------	--	---	--------------------------	------------------------------



2200 ↑ ENA R-192	DIXIT ENA 10	VGSI and descent angles not coincident (VGSI Angle 3.00/TCH 51).		TBONE ENA 8	One Minute Holding Pattern
ENA 2.3	ENA 1.2	ENA VOR/DME 3.44° TCH 51	FATEL ENA 2.5	192°	012° → 2000
1.2	1.2	2.5 NM	5.5 NM	1300	← 192°
CATEGORY	A	B	C	D	
S-20R	520/24	422 (500-½)	520/40	422 (500-¾)	
CIRCLING	560-1 460 (500-1)	580-1 480 (500-1)	580-1½ 480 (500-½)	680-2 580 (600-2)	



AK, 25 JAN 2024 to 21 MAR 2024

AK, 25 JAN 2024 to 21 MAR 2024

VOR/DME ENA <b>117.6</b> Chan <b>123</b>	APP CRS <b>012°</b>	Rwy ldg TDZE <b>94</b> Apt Elev <b>100</b>	<b>7575</b>
--	------------------------	--	-------------

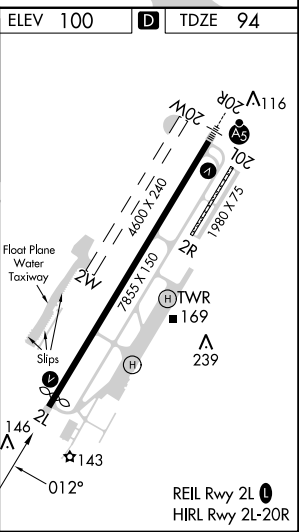
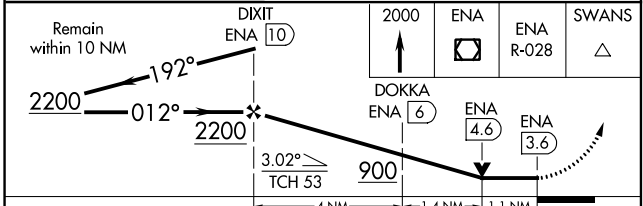
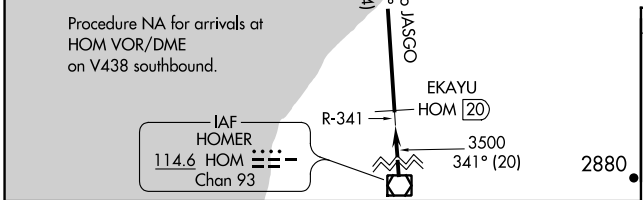
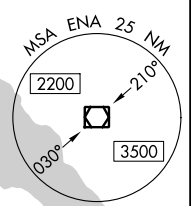
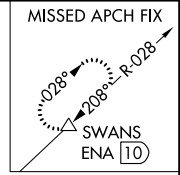
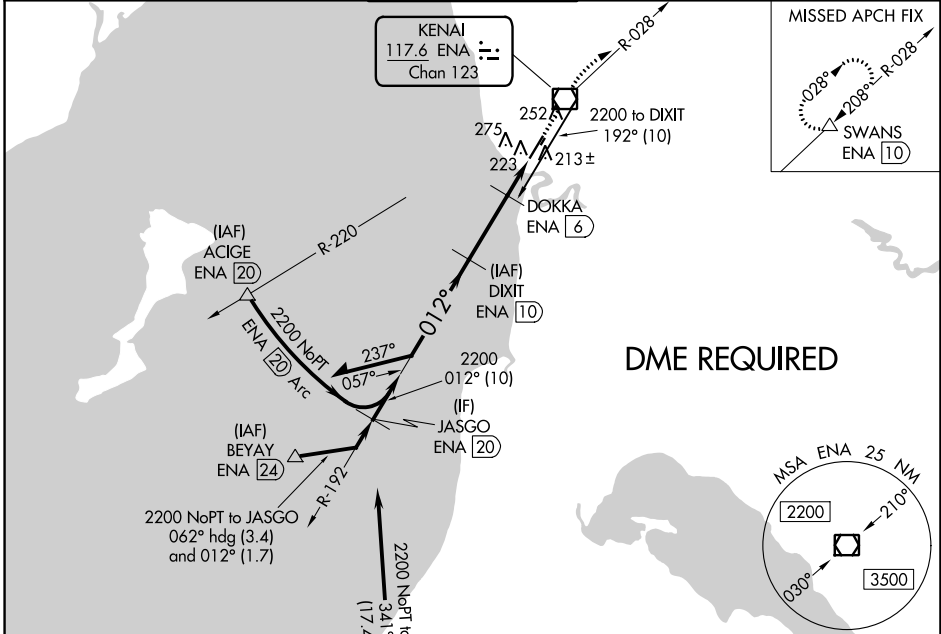
# VOR RWY 2L

KENAI MUNI (ENA) (PAEN)

**⚠** Circling Rwy 2R, 20L NA at night. DME required. When local altimeter setting not received, use Soldotna altimeter setting and increase all MDA 40 feet; increase S-2L Cat C and D visibility 1/8 mile and Circling Cat D visibility 1/4 mile. VDP NA with Soldotna altimeter setting. Circling Rwy 2W, 20W NA.

**MISSED APPROACH:** Climb to 2000 direct ENA VOR/DME and on ENA VOR/DME R-028 to SWANS/ENA 10 DME and hold.

ATIS <b>133.35</b>	ANCHORAGE CENTER <b>125.7 379.1</b>	KENAI TOWER* <b>121.3 (CTAF) 239.3</b>	GND CON <b>118.75</b>	KENAI RADIO <b>122.65</b>
-----------------------	--	---	--------------------------	------------------------------



CATEGORY	A	B	C	D
S-2L	480-1	386 (400-1)	480-1 1/8	386 (400-1 1/8)
<b>C</b> CIRCLING	560-1 460 (500-1)	580-1 480 (500-1)	580-1 1/2 480 (500-1 1/2)	680-2 580 (600-2)

AK, 25 JAN 2024 to 21 MAR 2024

AK, 25 JAN 2024 to 21 MAR 2024