

WAAS CH <b>86702</b> <b>W16A</b>	APP CRS <b>163°</b>	Rwy ldg TDZE <b>16</b> Apt Elev <b>16</b>
--	------------------------	---

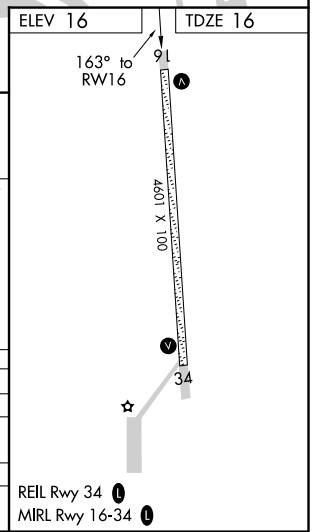
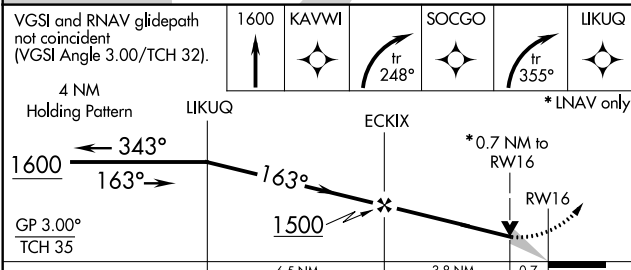
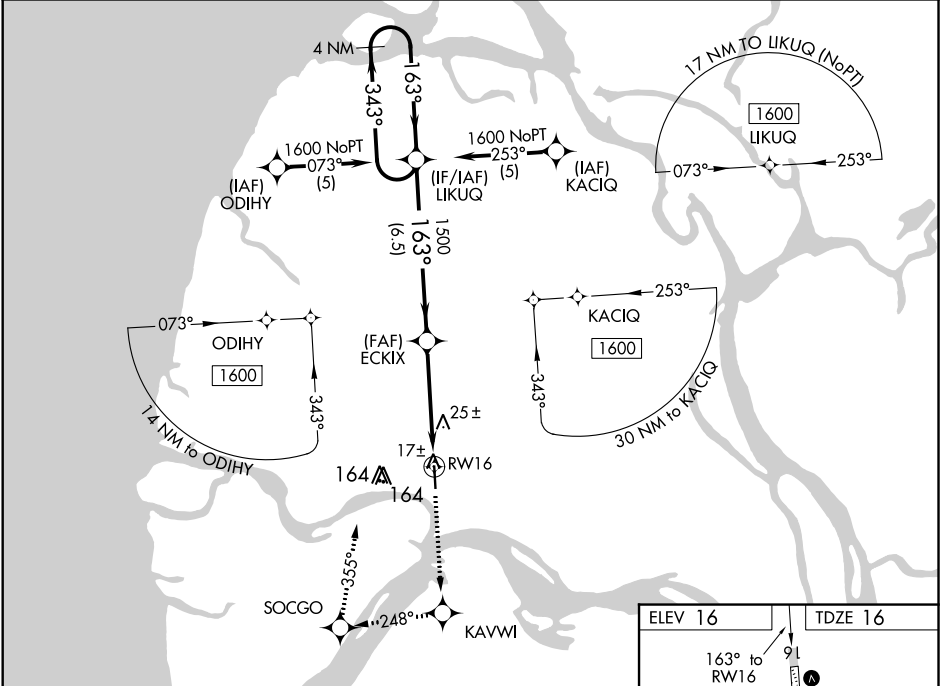
# RNAV (GPS) RWY 16

EMMONAK (ENM) (PAEM)

**⚠** If local altimeter setting not received, use St Mary's altimeter setting and increase all DAs 168 feet and all MDAs 180 feet. VDP NA with St Mary's altimeter setting. DME/DME RNP: 0.3 NA. Baro-VNAV NA when using St Mary's altimeter setting. For uncompensated Baro-VNAV systems, LNAV/VNAV NA below -25°C (-13°F) or above 48°C (119°F).

**⚠** MISSED APPROACH: Climb to 1600 direct KAVWI and right turn via 248° track to SOCGO and right turn via 355° track to LIKUQ and hold.

AWOS-3P <b>135.35</b>	ANCHORAGE CENTER <b>124.5</b>	CTAF <b>122.9</b>
--------------------------	----------------------------------	----------------------



CATEGORY	A	B	C	D
LPV DA		266-1	250 (300-1)	
LNAV/VNAV DA		280-1	264 (300-1)	
LNAV MDA		280-1	264 (300-1)	
CIRCLING	520-1	504 (600-1)	520-1½ 504 (600-1½)	580-2 564 (600-2)

AK, 02 DEC 2021 to 27 JAN 2022

AK, 02 DEC 2021 to 27 JAN 2022

WAAS CH <b>42502</b> <b>W34A</b>	APP CRS <b>343°</b>	Rwy ldg TDZE <b>16</b> Apt Elev <b>16</b>
--	------------------------	---

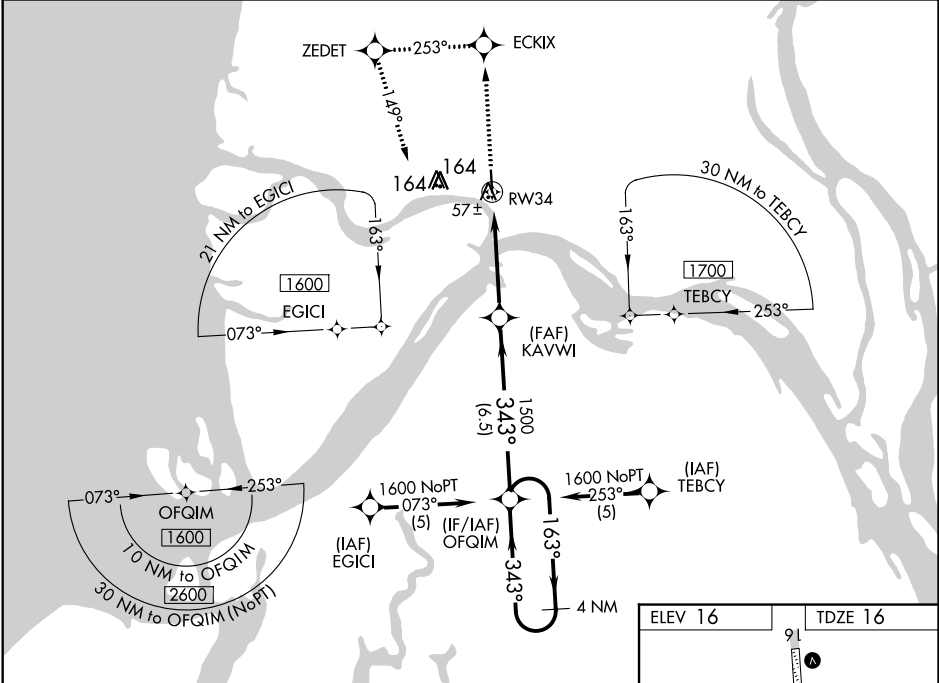
# RNAV (GPS) RWY 34

EMMONAK (ENM) (PAEM)

**⚠** If local altimeter setting not received, use St Mary's altimeter setting and increase all DAs 168 feet and MDAs 180 feet. VDP NA with St Mary's altimeter setting. DME/DME RNP- 0.3 NA. Baro-VNAV NA when using St Mary's altimeter setting. For uncompensated Baro-VNAV systems, LNAV/VNAV NA below -25°C (-13°F) or above 48°C (119°F).

**MISSED APPROACH:** Climb to 1600 direct ECKIX and left turn via 253° track to ZEDET and left turn via 149° track to OFQIM and hold.

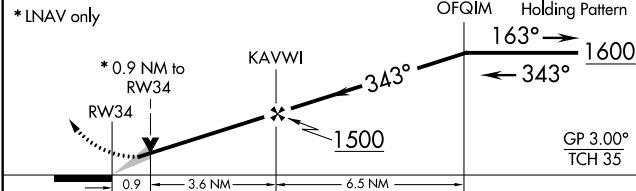
AWOS-3P <b>135,35</b>	ANCHORAGE CENTER <b>124,5</b>	CTAF <b>122.9</b>
--------------------------	----------------------------------	----------------------



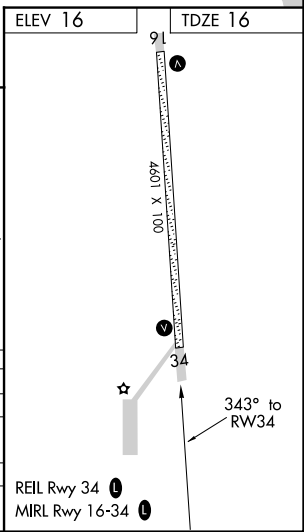
AK, 02 DEC 2021 to 27 JAN 2022

AK, 02 DEC 2021 to 27 JAN 2022

1600	ECKIX	tr 253°	ZEDET	tr 149°	OFQIM	VGSI and RNAV glidepath not coincident (VGSI Angle 3.00/TCH 32). 4 NM Holding Pattern
------	-------	---------	-------	---------	-------	---



CATEGORY	A	B	C	D
LPV DA		266-1	250 (300-1)	
LNAV/ VNAV DA		320-1	304 (400-1)	
LNAV MDA		320-1	304 (400-1)	
CIRCLING	520-1	504 (600-1)	520-1½ 504 (600-1½)	580-2 564 (600-2)



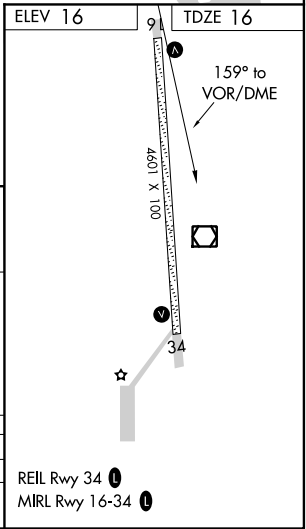
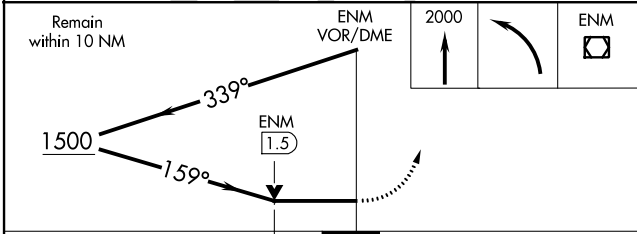
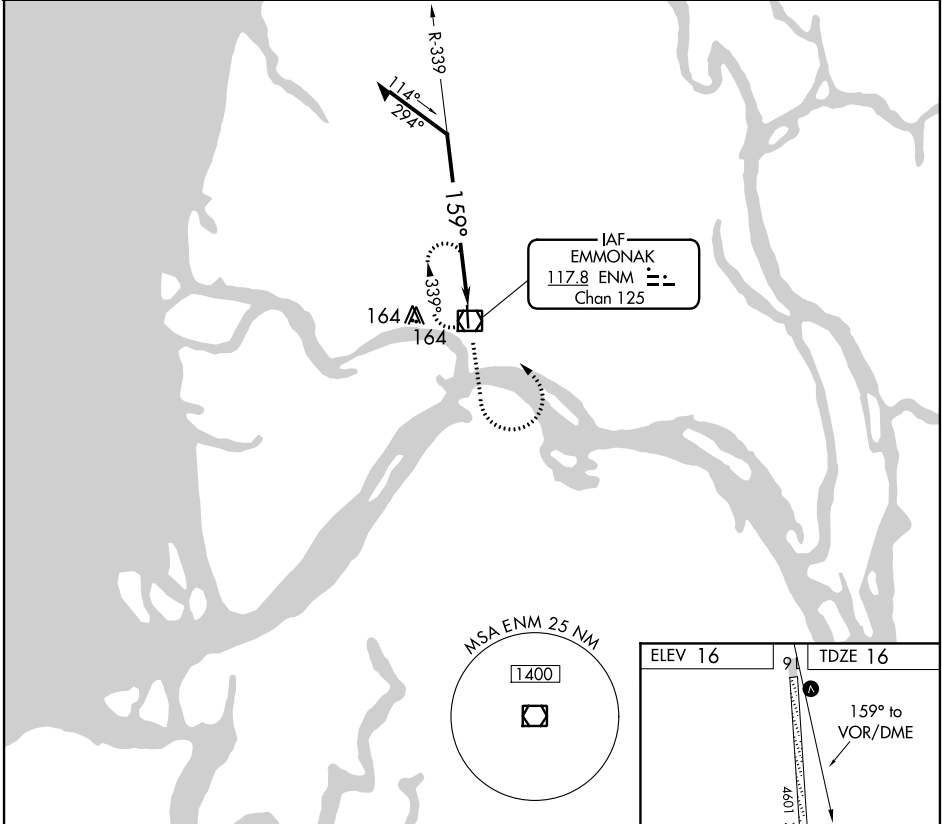
VOR/DME ENM <b>117.8</b> Chan <b>125</b>	APP CRS <b>159°</b>	Rwy Idg <b>4601</b> TDZE <b>16</b> Apt Elev <b>16</b>
--	------------------------	---

# VOR RWY 16

EMMONAK (ENM) (PAEM)

<p><b>⚠</b> If local altimeter setting not received, use St. Mary's altimeter setting and increase all MDAs 180 feet. VDP not authorized with St. Mary's altimeter setting.</p>	<p>MISSED APPROACH: Climb to 2000 then left turn direct ENM VOR/DME and hold.</p>
---	---

AWOS-3P <b>135.35</b>	ANCHORAGE CENTER <b>124.5</b>	CTAF <b>122.9</b>
--------------------------	----------------------------------	----------------------



CATEGORY	A	B	C	D
S-16	340-1 324 (400-1)			
CIRCLING	520-1 504 (600-1)	520-1½ 504 (600-1½)	580-2 564 (600-2)	

AK, 02 DEC 2021 to 27 JAN 2022

AK, 02 DEC 2021 to 27 JAN 2022