

23110

EEEGL FIVE DEPARTURE

AI-1196 [USAF]

ELMENDORF AFB (PAED)
ANCHORAGE, ALASKA

▲ ATIS # 124.3 273.5
 ▲ CLNG DEL 128.8 306.925
 ▲ GND CON 121.8 275.8
 ▲ TOWER 127.2 352.05
 ▲ ANCHORAGE DEP CON 118.6 290.5

▲ SKWEN N62°03.10'
 W151°06.26'

▲ GERDE N61° 53.90'
 W153°23.79'

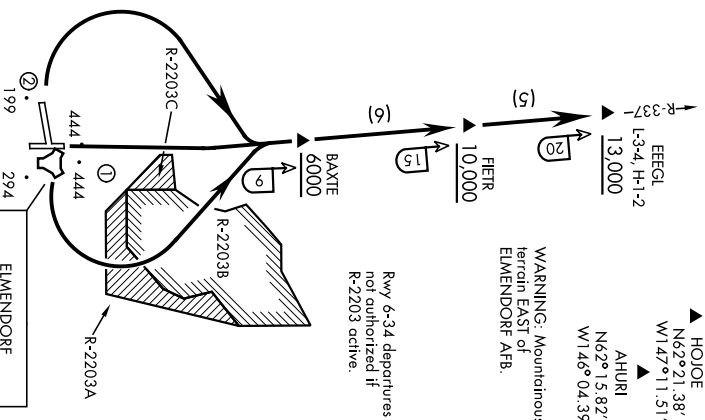
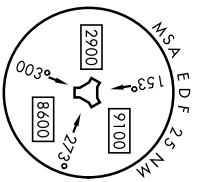
▲ HOIE N62°21.38'
 W147°11.51'
 ▲ AHURI N62° 15.82'
 W146° 04.39'

WARNING: Mountainous terrain EAST of ELMENDORF AFB.

▲ SPAR N60°37.16'
 W154°19.90'

Rwy	Knots	60	120	180	240	300	360
6	V/W(fpm)	601	1202	1803	2404	3005	3606
24	V/W(fpm)	581	1162	1743	2324	2905	3486
34	V/W(fpm)	656	1312	1968	2624	3280	3936

ATC Climb Rate to 13,000



Rwy 6-34 departures not authorized if R-2203 active.

ELMENDORF
 Chm 81 EDF
 N61°15.30' W149°46.15'

- ① Numerous trees to 444' MSL within 7300' of DER and 1850' left and right of centerline.
- ② 210' terrain, 930' from DER, 730' right of centerline and 281' MSL (21' AGL) trees 4100' from DER, 1230' right of centerline.

NOTE: Chart not to scale

5440

DEPARTURE ROUTE DESCRIPTION

▼ TAKEOFF RUNWAY 6: Climbing left turn to FL200, intercept EDF R-337 outbound. Cross BAITE at or above 6000, cross FIEIR at or above 10,000, cross EEEGL at or above 13,000. Upon leaving 13,000, proceed on course. Maintain FL200 or ATC assigned altitude.

▼ TAKEOFF RUNWAY 24: Climbing right turn to FL200, intercept EDF TACAN R-337 outbound. Cross FIEIR at or above 10,000, cross EEEGL at or above 13,000. Upon leaving 13,000, proceed on course. Maintain FL200 or ATC assigned altitude.

▼ TAKEOFF RUNWAY 34: Climb to FL200, intercept EDF R-337 outbound. Cross BAITE at or above 6000, cross FIEIR at or above 10,000, cross EEEGL at or above 13,000. Upon leaving 13,000, proceed on course. Maintain FL200 or ATC assigned altitude.

EEEGL FIVE DEPARTURE

ANCHORAGE ALASKA
ELMENDORF AFB (PAED)

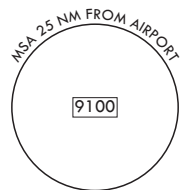
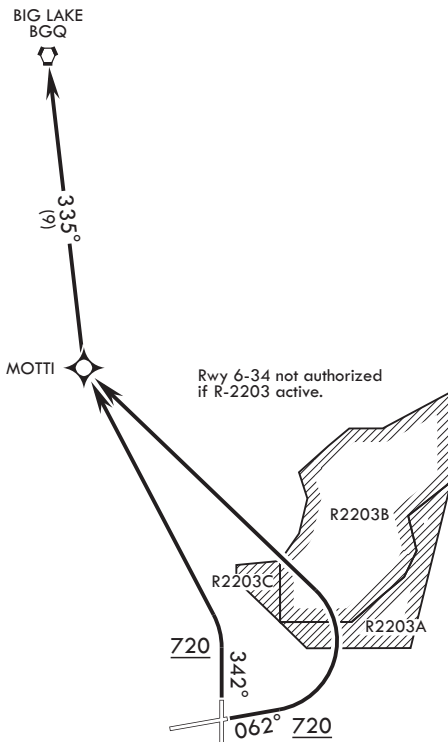
Orig 20APR23

ELMENDORF THREE DEPARTURE (RNAV) (MOTTI3.BGQ)

ANCHORAGE, ALASKA

ATIS * 124.3 273.5
 CLNC DEL 128.8 306.925
 GND CON 121.8 275.8
 TOWER 127.2 352.05
 ANCHORAGE APP CON/DEP CON
 118.6 290.5

RNAV1 - GPS
RADAR required for non-GPS equipped aircraft.



DEPARTURE ROUTE DESCRIPTION

TAKEOFF RWY 6: Climb heading 062° to 720, then turn left direct MOTTI, thence via 335° track to BGQ VORTAC at assigned ATC altitude.

TAKEOFF RWY 34: Climb heading 342° to 720, then turn left direct MOTTI, thence via 335° track to BGQ VORTAC at assigned altitude.

ELMENDORF THREE DEPARTURE (RNAV) (MOTTI3.BGQ)

ANCHORAGE, ALASKA
ELMENDORF AFB (PAED)

23110

YUKIA THREE DEPARTURE

ELMENDORF AFB (PAED)

ANCHORAGE ALASKA

AL-1196 [USAF]

RADAR required

Rwy	Knots	60	120	180	240	300	360
16	V/V[fpn]	232	464	696	928	1160	1392

Minimum Climb Rate to 600

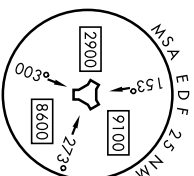
ATIS *124.3 273.5
 CLNC DEL
 128.8 306.925
 GND CON
 121.8 275.8
 TOWER
 127.2 352.05
 ANCHORAGE
 DEP CON
 118.6 290.5

ELMENDORF
 Chan 81 EDF



5440

FOR 962nd
 AACs USE ONLY



DEPARTURE ROUTE DESCRIPTION

TAKEOFF RUNWAY 16: Climbing right turn, intercept the EDF TACAN R-188 direct YUKIA.
 Climb to ATC assigned altitude.

YUKIA THREE DEPARTURE

Orig 20APR23

ANCHORAGE ALASKA
 ELMENDORF AFB (PAED)