

CHUNA TWO DEPARTURE
(CHUNA2.CHUNA) 10SEF20

(CHUNA2.CHUNA) 23334
CHUNA TWO DEPARTURE

AL-1241 (FAA)

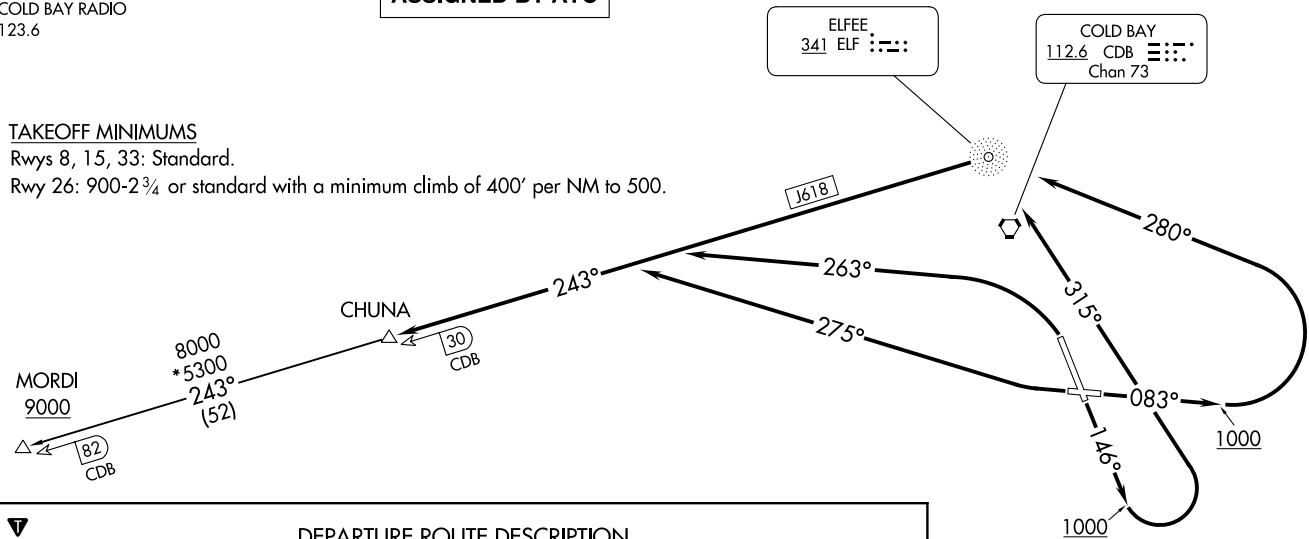
COLD BAY (CDB) (PACD)
COLD BAY, ALASKA

ANCHORAGE CENTER
118.5 278.3
COLD BAY RADIO
123.6

**TOP ALTITUDE:
ASSIGNED BY ATC**

TAKEOFF MINIMUMS

Rwys 8, 15, 33: Standard.
Rwy 26: 900-2¾ or standard with a minimum climb of 400' per NM to 500.



DEPARTURE ROUTE DESCRIPTION

TAKEOFF RUNWAY 8: Climb to 1000 on heading 083° then climbing left turn on course 280° to ELF NDB, thence. . . .

TAKEOFF RUWY 15: Climb to 1000 on heading 146° then climbing left turn on course 315° to ELF NDB, thence. . . .

TAKEOFF RUNWAY 26: Climbing right turn heading 275°, thence. . . .

TAKEOFF RUNWAY 33: Climbing left turn heading 263°, thence. . . .

. . . . intercept the 243° bearing from ELF NDB to CHUNA, maintain assigned altitude.

MORDI TRANSITION (CHUNA2.MORDI): From over CHUNA on ELF NDB 243° to MORDI.



NOTE: ADF and DME required.
NOTE: Chart not to scale.

COLD BAY, ALASKA
COLD BAY (CDB) (PACD)

**TOP ALTITUDE:
ASSIGNED BY ATC**

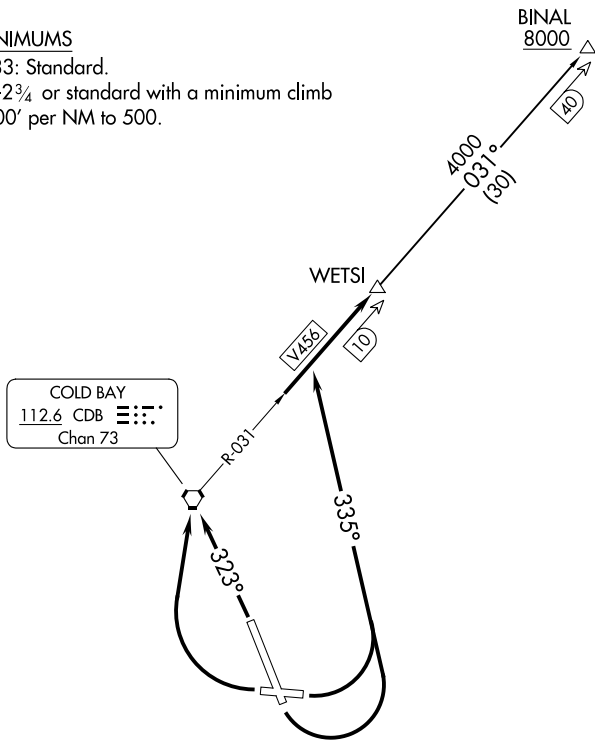
ANCHORAGE CENTER
118.5 278.3
COLD BAY RADIO
123.6

NOTE: DME required.

TAKEOFF MINIMUMS

Rwys 8, 15, 33: Standard.

Rwy 26: 900-2¾ or standard with a minimum climb of 400' per NM to 500.



NOTE: Chart not to scale.

DEPARTURE ROUTE DESCRIPTION

TAKEOFF RUNWAYS 8, 15: Climbing left turn heading 335°, thence

TAKEOFF RUNWAY 26: Climbing right turn direct CDB VORTAC, thence

TAKEOFF RUNWAY 33: Climb heading 323° direct CDB VORTAC, thence

. . . . intercept CDB VORTAC R-031 to join V456 northeast bound to WETS1 maintain assigned altitude.

BINAL TRANSITION (WETS12.BINAL): From over WETS1 on CDB R-031 to BINAL.