

APP CRS	Rwy Idg	5564
228°	TDZE	1574
	Apt Elev	1574

GPS RWY 23

COOLIDGE MUNI (P08)

NA Use Casa Grande Muni altimeter setting.

MISSED APPROACH: Climb to 3900 via 227° course to TOTEC and hold.

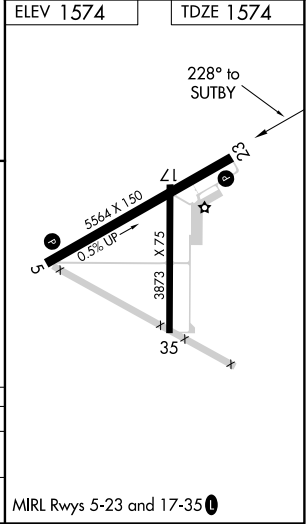
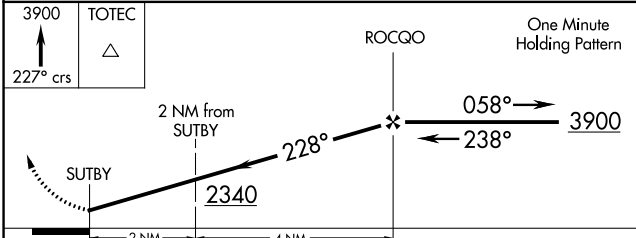
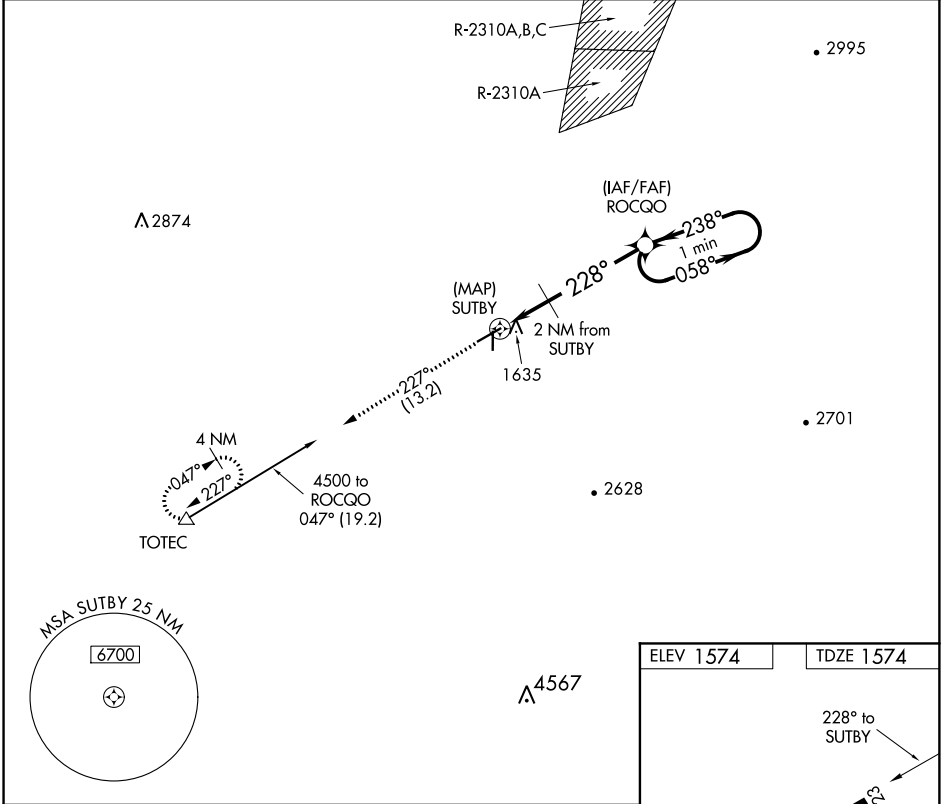
AWOS-3PT
119.350

ALBUQUERQUE CENTER
125.4 269.3

UNICOM
123.075 (CTAF) 0

SW-4, 30 JAN 2020 to 27 FEB 2020

SW-4, 30 JAN 2020 to 27 FEB 2020



CATEGORY	A	B	C	D
S-23	2060-1	486 (500-1)		NA
CIRCLING	2100-1	526 (600-1)		NA

MIRL Rwy 5-23 and 17-35 0

VORTAC TFD 114.8 Chan 95	APP CRS 071°	Rwy Idg TDZE 1564 Apt Elev 1576
--	------------------------	---

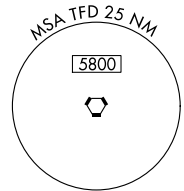
VOR RWY 5
COOLIDGE MUNI (P08)

DME required.

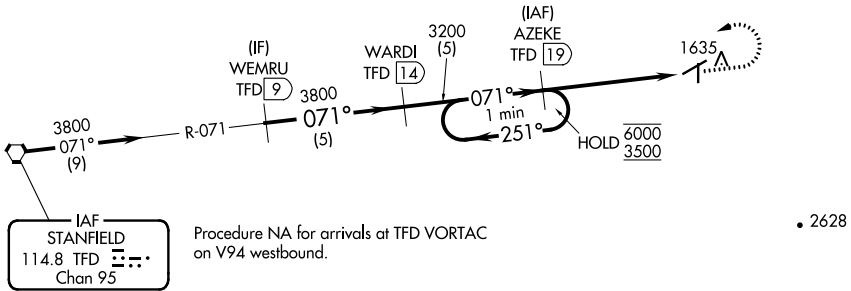
⚠ Circling Rwy 17-35 NA at night.

MISSED APPROACH: Climb to 2300 then climbing left turn to 3500 on TFD VORTAC R-071 to AZEKE/19 DME and hold.

AWOS-3PT 119.350	ALBUQUERQUE CENTER 125.4 269.3	UNICOM 123.075 (CTAF) 0
----------------------------	--	--



⚠ 2874

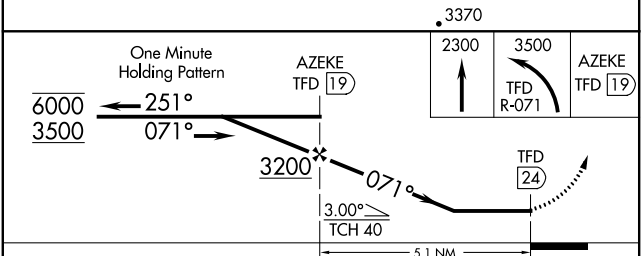
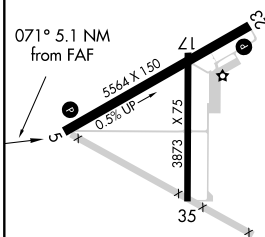


SW-4, 30 JAN 2020 to 27 FEB 2020

SW-4, 30 JAN 2020 to 27 FEB 2020

ELEV 1576	TDZE 1564
------------------	------------------

⚠ 4567



CATEGORY	A	B	C	D
S-5	2200-1	636 (700-1)	NA	
C CIRCLING	2200-1	624 (700-1)	NA	

INSTRUMENT APPROACH PROCEDURE CHARTS

A IFR ALTERNATE AIRPORT MINIMUMS

Standard alternate minimums for non-precision approaches and approaches with vertical guidance [NDB, VOR, LOC, TACAN, LDA, SDF, VOR/DME, ASR, RNAV (GPS) or RNAV (RNP)] are 800-2. Standard alternate minimums for precision approaches (ILS, PAR, or GLS) are 600-2. Airports within this geographical area that require alternate minimums other than standard or alternate minimums with restrictions are listed below. NA - means alternate minimums are not authorized due to unmonitored facility, absence of weather reporting service, or lack of adequate navigation coverage. Civil pilots see FAR 91. IFR Alternate Minimums: Ceiling and Visibility Minimums not applicable to USA/USN/USAF. Pilots must review the IFR Alternate Minimums Notes for alternate airfield suitability.

NAME ALTERNATE MINIMUMS

BATTLE MOUNTAIN, NV
 BATTLE MOUNTAIN (BAM).....**RNAV (GPS) Rwy 22**
 Category D, 1000-3.

BEAVER, UT
 BEAVER MUNI (U52).....**RNAV (GPS)-A**
 Categories A, B, 1300-2; Category C, 1300-3.

BOULDER CITY, NV
 BOULDER CITY MUNI (BVU).....**RNAV (GPS) Rwy 27**
 Category B, 1200-2; Category C, 1800-3.

BULLHEAD CITY, AZ
 LAUGHLIN/BULLHEAD INTL (IFP).....**RNAV (GPS) Rwy 16¹**
RNAV (GPS) Rwy 34²
VOR Rwy 34³

¹Categories A, B, 1300-2; Category C, 1300-3; Category D, 1700-3.
²Categories A, B, 1100-2; Category C, 1100-3; Category D, 1700-3.
³Categories A, B, 2200-2; Categories C, D, 2200-3.

CARSON CITY, NV
 CARSON (CXP).....**RNAV (GPS)-B**
 Categories A, B, 1700-2; Category C, 1700-3; Category D, 3000-3.

CASA GRANDE, AZ
 CASA GRANDE MUNI (CGZ).....**RNAV (GPS) Rwy 5**
RNAV (GPS) Rwy 23
 Category D, 800-2½.

COLORADO CITY, AZ
 COLORADO CITY MUNI (AZC).....**RNAV (GPS) Rwy 11**
RNAV (GPS) Rwy 29
 Categories C, D, 2100-3.

NAME ALTERNATE MINIMUMS

COOLIDGE, AZ
 COOLIDGE MUNI (P08).....**VOR Rwy 5**
 NA when local weather not available.

ELKO, NV
 ELKO RGNL (EKO).....**LDA/DME Rwy 24¹**
RNAV (GPS) Rwy 6²
RNAV (GPS) Rwy 24²
VOR/DME-B³

¹Category B, 1000-2; Category C 1500-3; Category D, 1900-3.
²Categories A, B, 1200-2; Category C 1500-3; Category D, 1900-3.
³Categories A, B, 1300-2; Categories C, D, 1300-3.

ELY, NV
 ELY AIRPORT/ YELLAND FIELD (ELY).....**RNAV (GPS) Rwy 18**
 NA when local weather not available.
 Category D 1000-3.

EUREKA, NV
 EUREKA (05U).....**RNAV (GPS) Rwy 18**
 Categories A, B, 1900-2; Categories C, D, 1900-3.

FLAGSTAFF, AZ
 FLAGSTAFF PULLIAM (FLG).....**ILS or LOC Rwy 21¹**
RNAV (GPS) Rwy 3²
RNAV (GPS) Rwy 21²
VOR Rwy 21²

¹ILS, LOC, Category C, 1100-3; Category D, 1600-3.
²Category C, 1100-3; Category D, 1600-3.

FORT HUACHUCA/SIERRA VISTA, AZ
 SIERRA VISTA MUNI- LIBBY AAF (FHU).....**ILS or LOC Rwy 26**
RNAV (GPS) Rwy 8
RNAV (GPS) Rwy 26
VOR Rwy 26

NA when control tower closed.

30 JAN 2020 to 27 FEB 2020

30 JAN 2020 to 27 FEB 2020

NAME ALTERNATE MINIMUMS

GLENDALE, AZ

GLENDALE
MUNI (GEU).....RNAV (GPS) Rwy 1
RNAV (GPS) Rwy 19
NA when local weather not available.

GRAND CANYON, AZ

GRAND CANYON NATIONAL
PARK (GCN).....ILS or LOC Rwy 3¹²
RNAV (GPS) Rwy 3³
VOR Rwy 3⁴

- ¹NA when control tower closed.
- ²ILS Category C, 700-2; Category D, 1100-3;
LOC, Category D, 1100-3.
- ³Category C, 800-3; Category D, 1100-3.
- ⁴Category D, 1100-3.

VALLE (40G).....VOR/DME Rwy 19
NA except for operators with approved weather
reporting service.

HAWTHORNE, NV

HAWTHORNE
INDUSTRIAL (HTH).....RNAV (GPS) Rwy 28
Category C, 1500-3.

HEBER, UT

HEBER
VALLEY (HCR).....RNAV (GPS)-A
Categories, A, B, 2400-2; Category C, 2400-3.

KANAB, UT

KANAB MUNI (KNB).....RNAV (GPS) Rwy 1
Category B, 1100-2; Category C, 1400-3.

KINGMAN, AZ

KINGMAN (IGM).....RNAV (GPS) Rwy 3
RNAV (GPS) Y Rwy 21
VOR/DME Rwy 21
Category D, 800-2¼.

LAS VEGAS, NV

HENDERSON
EXECUTIVE (HND).....RNAV (GPS)-B¹
VOR-C²
NA when local weather not available.
¹Categories A, B, 1500-2; Category C,
1500-3.
²Categories A, B, 2400-2; Category C, 2400-3.

NAME ALTERNATE MINIMUMS

LAS VEGAS, NV (CON'T)

MC CARRAN
INTL (LAS).....ILS or LOC Rwy 1L¹
ILS or LOC Rwy 26L²
ILS or LOC Rwy 26R²
RNAV (GPS) Rwy 1R³
RNAV (GPS) Rwy 19L³
RNAV (GPS) Rwy 19R³
VOR Rwy 26L/R³
VOR/DME -A⁴

- ¹ILS, LOC, Categories A, B, 900-2; Category C,
1000-2¾.
- ²ILS, LOC, Categories A, B, 900-2; Category C,
1000-2¾, Categories D, E, 1400-3.
- ³Categories A, B, 900-2; Category C, 1000-2¾,
Categories D, 1400-3.
- ⁴Categories A, B, 900-2; Categories C, D, 1100-3.

NORTH LAS
VEGAS (VGT).....ILS or LOC Rwy 12L
NA when control tower closed.

LOGAN, UT

LOGAN-CACHE (LGU).....RNAV (GPS) Rwy 17
Categories A, B, 1400-2; Categories C, D, 1400-3.

LOVELOCK, NV

DERBY
FIELD (LOL).....RNAV (GPS) Rwy 2¹
RNAV (GPS) Rwy 20¹
VOR-A²

- ¹Category D, 800-2½.
- ²Categories A, B, 900-2; Category C, 900-2¾;
Category D, 1000-3.

MESA, AZ

FALCON FIELD (FFZ).....RNAV (GPS) Rwy 4L¹
RNAV (GPS) Rwy 4R¹
RNAV (GPS)-B²
¹NA when local weather not available.
²NA when control tower closed.

MILFORD, UT

MILFORD MUNI/BEN AND JUDY
BRISCOE FIELD (MLF).....RNAV (GPS) Rwy 16
RNAV (GPS) Rwy 34
VOR/DME-A
NA when local weather not available.

MINDEN, NV

MINDEN-TAHOE (MEV).....RNAV (GPS)-A¹
RNAV (GPS)-B²
¹Categories A, B, 1900-2; Categories C, D,
1900-3.
²Categories A, B, 1800-2; Categories C, D,
1800-3.

30 JAN 2020 to 27 FEB 2020

30 JAN 2020 to 27 FEB 2020

NAME ALTERNATE MINIMUMS

NAME ALTERNATE

OGDEN, UT

OGDEN-
HINCKLEY (OGD).....**ILS or LOC Rwy 3¹**
VOR-A

NA when local weather not available.
¹NA when control tower closed.

PANGUITCH, UT

PANGUITCH
MUNI (U55).....**RNAV (GPS) Rwy 18**
RNAV (GPS) Rwy 36¹

NA when local weather not available.
¹Categories A, B, 1200-2.

PHOENIX, AZ

PHOENIX DEER
VALLEY (DVT).....**RNAV (GPS)-B¹**
RNAV (GPS) Rwy 7R²
RNAV (GPS) Rwy 25L²

NA when local weather not available.
¹Categories A, B, 1000-2; Category C, 1000-2½.
²Categories A, B, 1000-2; Category C, 1000-2½;
Category D, 1000-3.

PHOENIX-MESA

GATEWAY (IWA).....**ILS or LOC Rwy 30C¹⁴**
RNAV (GPS) Rwy 12C²
RNAV (GPS) Rwy 12R³
RNAV (GPS) Rwy 30R
RNAV (GPS) Y Rwy 30C²
RNAV (GPS) Rwy 30L²
VOR or TACAN Rwy 30C²

NA when local weather not available.
¹NA when control tower closed.
²Category E, 800-2¼.
³Category E, 1100-3.
⁴ILS, Category E, 700-2¼; LOC Category E,
800-2¼.

PHOENIX SKY HARBOR

INTL (PHX).....**ILS or LOC/DME Rwy 7L¹**
ILS or LOC Rwy 8⁴
ILS or LOC Rwy 25L³
ILS or LOC Rwy 26⁵
RNAV (GPS) Y Rwy 7R²
RNAV (GPS) Y Rwy 7L²
RNAV (GPS) Y Rwy 8⁵
RNAV (GPS) Y Rwy 25L²
RNAV (GPS) Y Rwy 25R²
RNAV (GPS) Y Rwy 26²

¹ILS, Categories A, B, C, 700-2; Category D,
800-2½. LOC, Category D, 800-2½.
²Category D, 800-2½.
³ILS, Categories A, B, C, 700-2; Category D,
800-2.
⁴ILS, Categories A, B, 800-2; Category C, 800-2¼;
Category D, 800-2½. LOC, Category C, 800-2¼;
Category D, 800-2½.
⁵Category C, 800-2¼; Category D, 800-2½.
⁶LOC, Category C, 1000-2¼; Category D, 1500-3.

PRESCOTT, AZ

PRESCOTT RGNL - ERNEST A LOVE
FLD (PRC).....**ILS or LOC/DME Rwy 21L¹²**
RNAV (GPS) Y Rwy 3R³
RNAV (GPS) Rwy 12²
RNAV (GPS) Rwy 21L³
VOR Rwy 12⁴

¹NA when control tower closed.
²ILS, Category B, 700-2; Category C, 1100-3;
Category D, 1700-3. LOC, Category C, 1100-3;
Category D, 1700-3.
³Category C, 1100-3; Category D, 1700-3.
⁴Categories C, D, 1100-3.

PRICE, UT

CARBON COUNTY RGNL/BUCK DAVIS
FIELD (PUC).....**RNAV (GPS) Rwy 1**
VOR Rwy 1
Category B, 1000-2; Category C, 1200-3;

PROVO, UT

PROVO
MUNI (PVU).....**ILS or LOC Rwy 13**
NA when control tower closed.
ILS, Categories A, B, C, 800-2; Category D,
800-2½; LOC, Category D, 800-2½.

RENO, NV

RENO/TAHOE
INTL (RNO).....**ILS or LOC/DME Rwy 34L²**
ILS X or LOC X Rwy 16R¹
ILS Y Rwy 16R¹⁰
ILS Z or LOC Z Rwy 16R¹
LOC Y Rwy 16R³
RNAV (GPS) X Rwy 34L⁴
RNAV (GPS) X Rwy 34R⁴
RNAV (GPS) X Rwy 16L⁵
RNAV (GPS) X Rwy 16R⁶
RNAV (RNP) Y Rwy 16L⁹
RNAV (RNP) Y Rwy 16R⁹
RNAV (RNP) Z Rwy 16L⁷
RNAV (RNP) Z Rwy 16R⁷
TACAN-F¹¹
VOR-D⁶

¹Categories A, B, 1100-2; Categories C, D, 2100-3.
²ILS, LOC, Categories A, B, 1000-2;
Category C, 1000-2¼.
³Categories A, B, 1600-2;
Categories C, D, 2100-3; Category E, 2300-3.
⁴Categories A, B, 1000-2; Category C, 1000-2¼;
Category D, 1000-3.
⁵Categories A, B, 1400-2; Categories C, D, 1400-3.
⁶Categories A, B, 1800-2; Categories C, D, 1800-3.
⁷Categories A, B, C, 800-2½.
⁸Categories A, B, 1600-2;
Categories C, D, 1600-3.
⁹Categories A, B, C, D, 800-2½.
¹⁰Categories A, B, C, D, E, 1500-6.
¹¹Categories A, B, 1600-2;
Categories C, D, 2000-3; Category E, 2100-3.

30 JAN 2020 to 27 FEB 2020

30 JAN 2020 to 27 FEB 2020

NAME ALTERNATE MINIMUMS

SAFFORD, AZ

SAFFORD RGNL (SAD)..... **RNAV (GPS) Rwy 12**
RNAV (GPS) Rwy 30

NA when local weather not available.

ST. GEORGE, UT

ST. GEORGE

RGNL (SGU)..... **RNAV (GPS) Rwy 1²**
RNAV (GPS) Rwy 19¹
VOR/DME-A³

¹Categories A, B, 1100-2; Categories C, D, 1100-3.

²Categories A, B, 900-2; Categories C, 900-2 $\frac{3}{4}$.

³Categories A, B, 900-2; Category C, 900-2 $\frac{1}{2}$; Category D, 1000-3.

ST. JOHNS, AZ

ST. JOHNS INDUSTRIAL

AIR PARK (SJM)..... **RNAV (GPS) Rwy 14**
 NA when local weather not available.

SCOTTSDALE, AZ

SCOTTSDALE (SDL)..... **RNAV (GPS)-D**
RNAV (GPS)-E
VOR/DME-A¹
VOR-C²

NA when local weather not available.

¹Categories A, B, 900-2; Category C, 900-2 $\frac{1}{2}$; Category D, 900-2 $\frac{3}{4}$.

²Categories A, B, 1000-2; Category C, 1000-2 $\frac{3}{4}$; Category D, 1000-3.

SHOW LOW, AZ

SHOW LOW

RGNL (SOW)..... **RNAV (GPS) Rwy 25**
 NA when local weather not available.
 Category C, 800-2 $\frac{1}{4}$; Category D, 1000-3.

TONOPAH, NV

TONOPAH (TPH).....

VOR or GPS-A
 Category D, 800-2 $\frac{1}{4}$.

TOOELE, UT

BOLINDER FIELD-TOOELE

VALLEY (TVV).....

ILS or LOC Rwy 17¹
RNAV (GPS) Rwy 17²

¹ILS, Category C, 800-2; Category D, 1100-3; LOC, Category D, 1100-3.

²Category D, 1100-3.

NAME ALTERNATE MINIMUMS

TUCSON, AZ

RYAN

FIELD (RYN)..... **RNAV (GPS) Rwy 6R**
 Category D, 1000-3.

TUCSON

INTL (TUS)..... **ILS or LOC Rwy 11L¹⁵**
LOC BC Rwy 29R²
RNAV (GPS) Rwy 29L³
RNAV (GPS) Z Rwy 11L⁴
RNAV (GPS) Z Rwy 29R²
VOR or TACAN Rwy 29R²
VOR or TACAN Rwy 11L²

¹LOC, Categories A, B, 900-2; Category C, 900-2 $\frac{1}{2}$; Category D, 900-2 $\frac{3}{4}$; Category E, 1200-3.

²Category E, 1200-3.

³Category D, 800-2 $\frac{1}{4}$.

⁴Category D, 800-2 $\frac{1}{4}$; Category E, 1200-3.

⁵NA when local weather not available.

VERNAL, UT

VERNAL

RGNL (VEL)..... **RNAV (GPS) Y Rwy 35¹**
RNAV (GPS) Z Rwy 35²
VOR Rwy 35³

¹Categories A, B, 1100-2; Category C, 1100-3; Category D, 1200-3.

²Categories A, B, C, D, 900-3.

³Category C, 800-3; Category D, 1200-3.

WENDOVER, UT

WENDOVER (ENV)..... **RNAV (GPS)-A³⁴**
RNAV (GPS)-C⁴⁵
VOR/DME-B¹
VOR/DME or TACAN Rwy 26²

¹Categories A, B, 1300-2; Category C, 1300-3; Category D, E 1500-3.

²Category D, 900-2 $\frac{3}{4}$; Category E, 1500-3.

³Categories A, B, 1900-2; Categories C, D, E, 1900-3.

⁴NA when local weather not available.

⁵Categories A, B, 1800-2; Categories C, D, E, 1800-3.

WINDOW ROCK, AZ

WINDOW ROCK (RQE)..... **RNAV (GPS) Rwy 3¹**
RNAV (GPS)-B²
VOR-A²

NA when local weather not available.

¹Categories A, B, 1000-2; Category C, 1100-3.

²Categories A, B, 1000-2; Category C, 1100-3; Category D, 1400-3.

30 JAN 2020 to 27 FEB 2020

30 JAN 2020 to 27 FEB 2020

20030

NAME ALTERNATE MINIMUMS

NAME ALTERNATE MINIMUMS

WINNEMUCCA, NV

WINNEMUCCA

MUNI (WMC).....RNAV (GPS) Rwy 14¹²
RNAV (GPS) Rwy 32¹
VOR Rwy 14³

¹NA when local weather not available.

²Category C, 800-2¼; Category D, 800-2½.

³Category C, 1000-3.

30 JAN 2020 to 27 FEB 2020

30 JAN 2020 to 27 FEB 2020

20030

M5

TAKEOFF MINIMUMS, (OBSTACLE) DEPARTURE PROCEDURES, AND DIVERSE VECTOR AREA (RADAR VECTORS)

20030 INSTRUMENT APPROACH PROCEDURE CHARTS

IFR TAKEOFF MINIMUMS AND (OBSTACLE) DEPARTURE PROCEDURES

Civil Airports and Selected Military Airports

ALL USERS: Airports that have Departure Procedures (DPs) designed specifically to assist pilots in avoiding obstacles during the climb to the minimum enroute altitude, and/or airports that have civil IFR takeoff minimums other than standard, are listed below. Takeoff Minimums and Departure Procedures apply to all runways unless otherwise specified. An entry may also be listed that contains only Takeoff Obstacle Notes. Altitudes, unless otherwise indicated, are minimum altitudes in MSL.

DPs specifically designed for obstacle avoidance are referred to as Obstacle Departure Procedures (ODPs) and are textually described below, or published separately as a graphic procedure. If the ODP is published as a graphic procedure, its name will be listed below, and it can be found in either this volume (civil), or the applicable military volume, as appropriate. Users will recognize graphic obstacle DPs by the term "(OBSTACLE)" included in the procedure title; e.g., TETON TWO (OBSTACLE). If not specifically assigned an ODP, SID, or radar vector as part of an IFR clearance, an ODP may be required to be flown for obstacle clearance, even though not specifically stated in the IFR clearance. When doing so in this manner, ATC should be informed when the ODP being used contains a specified route to be flown, restrictions before turning, and/or altitude restrictions.

Some ODPs, which are established solely for obstacle avoidance, require a climb in visual conditions to cross the airport, a fix, or a NAVAID in a specified direction, at or above a specified altitude. These procedures are called Visual Climb Over Airport (VCOA). To ensure safe and efficient operations, the pilot must verbally request approval from ATC to fly the VCOA when requesting their IFR clearance.

At some locations where an ODP has been established, a diverse vector area (DVA) may be created to allow radar vectors to be used in lieu of an ODP. DVA information will state that headings will be as assigned by ATC and climb gradients, when applicable, will be published immediately following the specified departure procedure.

Graphic DPs designed by ATC to standardize traffic flows, ensure aircraft separation and enhance capacity are referred to as "Standard Instrument Departures (SIDs)". SIDs also provide obstacle clearance and are published under the appropriate airport section. ATC clearance must be received prior to flying a SID.

CIVIL USERS NOTE: Title 14 Code of Federal Regulations Part 91 prescribes standard takeoff rules and establishes takeoff minimums for certain operators as follows: (1) For aircraft, other than helicopters, having two engines or less – one statute mile visibility. (2) For aircraft having more than two engines – one-half statute mile visibility. (3) For helicopters – one-half statute mile visibility. These standard minima apply in the absence of any different minima listed below.

MILITARY USERS NOTE: Civil (nonstandard) takeoff minima are published below. For military takeoff minima, refer to appropriate service directives.

NAME	TAKEOFF MINIMUMS
------	------------------

BATTLE MOUNTAIN, NV

BATTLE MOUNTAIN (BAM)

TAKEOFF MINIMUMS AND (OBSTACLE)

DEPARTURE PROCEDURES

AMDT 4 18312 (FAA)

TAKEOFF MINIMUMS: **Rwy 4**, std. w/min. climb of 335' per NM to 6300 or 4800-3 for VCOA. **Rwy 13**, std. w/min. climb of 350' per NM to 6500 or 4800-3 for VCOA. **DEPARTURE PROCEDURE:** **Rwy 4**, climb heading 036° to 8200 before proceeding on course. **Rwy 13**, climbing right turn heading 240° and BAM R-205 outbound to 10000 before proceeding on course. **Rwy 22**, climb direct BAM VORTAC and proceed on BAM R-205 outbound to 10100 before proceeding on course. **Rwy 31**, climb heading 306° and BAM R-324 outbound to 9100 before proceeding on course.

VCOA: **Rwys 4, 13**, obtain ATC approval for VCOA when requesting IFR clearance. Climb in visual conditions to cross Battle Mountain Airport at or above 9200 before proceeding on course.

TAKEOFF OBSTACLE NOTES: **Rwy 4**, trees beginning 129' from DER, 18' right of centerline, up to 45' AGL/4570' MSL. Trees beginning 153' from DER, 55' left of centerline, up to 45' AGL/4570' MSL. **Rwy 13**, vehicle on road 15' from DER, 171' right of centerline, 4558' MSL. Sign 19' from DER, 250' left of centerline, 4' AGL/4537' MSL. Tree, vehicle on road beginning 42' from DER, 23' right of centerline, up to 55' AGL/4566' MSL.

NAME	TAKEOFF MINIMUMS
------	------------------

BATTLE MOUNTAIN, NV (CON'T)

BATTLE MOUNTAIN (BAM) (CON'T)

Rwy 13 (CON'T), trees beginning 116' from DER, 151' left of centerline, up to 45' AGL/4566' MSL. Trees beginning 120' from DER, 47' right of centerline, up to 45' AGL/4570' MSL. Trees beginning 497' from DER, 127' left of centerline, up to 45' AGL/4570' MSL. Trees beginning 731' from DER, 71' right of centerline, up to 45' AGL/4573' MSL. Trees beginning 956' from DER, 79' left of centerline, up to 45' AGL/4573' MSL. Trees 1493' from DER, 667' right of centerline, 45' AGL/4576' MSL. **Rwy 22**, tree, NAVAID, wind indicator beginning 101' from DER, 13' right of centerline, up to 45' AGL/4570' MSL. Trees beginning 125' from DER, 133' left of centerline, up to 45' AGL/4570' MSL. Trees beginning 499' from DER, 60' left of centerline, up to 45' AGL/4573' MSL. Trees beginning 1270' from DER, 215' left of centerline, up to 45' AGL/4576' MSL. **Rwy 31**, vegetation 33' from DER, 487' left of centerline, 4540' MSL. Trees beginning 50' from DER, 80' right of centerline, up to 45' AGL/4573' MSL. Trees beginning 124' from DER, 46' left of centerline, up to 45' AGL/4573' MSL.

30 JAN 2020 to 27 FEB 2020

30 JAN 2020 to 27 FEB 2020

**TAKEOFF MINIMUMS, (OBSTACLE) DEPARTURE PROCEDURES, AND
DIVERSE VECTOR AREA (RADAR VECTORS)**

BEAVER, UT

BEAVER MUNI (U52)

**TAKEOFF MINIMUMS AND (OBSTACLE)
DEPARTURE PROCEDURES
ORIG-A 19003 (FAA)**

TAKEOFF MINIMUMS: **Rwys 7, 25**, NA –Obstacles

Rwys 13, 31, 2600-2% for VCOA.

VCOA: **Rwys 13, 31**, obtain ATC approval for VCOA when requesting IFR clearance. Climb in visual conditions to cross Beaver Muni at or above 8300, then climb to 10100 on MLF VORTAC R-102 to MLF VORTAC. Do not exceed 210K until established on MLF VORTAC R-102.

TAKEOFF OBSTACLE NOTES: **Rwy 13**, vegetation 429' from DER, 46' right of centerline, 5877' MSL. Tree 642' from DER, 49' right of centerline, 5886' MSL. Terrain 1344' from DER, 802' right of centerline, 5899' MSL. Terrain 1725' from DER, 938' left of centerline, 5909' MSL. Terrain 1729' from DER, 762' right of centerline, 5913' MSL. Terrain beginning 1854' from DER, 7' left of centerline, up to 5913' MSL. Terrain 1857' from DER, 559' right of centerline, 5916' MSL. Terrain beginning 1981' from DER, 209' left of centerline, up to 5922' MSL. Terrain beginning 1984' from DER, 357' right of centerline, up to 5919' MSL. Terrain beginning 2109' from DER, 412' left of centerline, up to 5929' MSL. Terrain beginning 2112' from DER, 154' right of centerline, up to 5926' MSL. Terrain 2240' from DER, 47' left of centerline, 5932' MSL. Terrain 2366' from DER, 817' left of centerline, 5936' MSL. Terrain 2367' from DER, 250' left of centerline, 5939' MSL. Terrain beginning 2369' from DER, 316' right of centerline, up to 5932' MSL. Terrain beginning 2494' from DER, 452' left of centerline, up to 5942' MSL. Terrain beginning 2496' from DER, 114' right of centerline, up to 5939' MSL. Terrain beginning 2623' from DER, 88' left of centerline, up to 5949' MSL. Terrain beginning 2750' from DER, 291' left of centerline, up to 5955' MSL. Terrain beginning 2753' from DER, 275' right of centerline, up to 5942' MSL. Terrain beginning 2879' from DER, 493' left of centerline, up to 5962' MSL. Terrain beginning 2881' from DER, 73' right of centerline, up to 5949' MSL. Terrain beginning 3007' from DER, 129' left of centerline, up to 5965' MSL. Terrain beginning 3135' from DER, 169' left of centerline, up to 5968' MSL. Terrain beginning 3137' from DER, 235' right of centerline, up to 5952' MSL. Terrain beginning 3265' from DER, 32' right of centerline, up to 5955' MSL. Terrain 3268' from DER, 1166' right of centerline, 5959' MSL. Terrain beginning 3394' from DER, 396' right of centerline, up to 5962' MSL. Terrain beginning 3522' from DER, 194' right of centerline, up to 5965' MSL. Terrain beginning 3650' from DER, 8' left of centerline, up to 5972' MSL. Terrain beginning 3651' from DER, 558' right of centerline, up to 5968' MSL. Terrain beginning 3779' from DER, 356' right of centerline, up to 5975' MSL. Terrain beginning 3905' from DER, 413' left of centerline, up to 5975' MSL. Terrain beginning 3906' from DER, 153' right of centerline, up to 5978' MSL. Terrain 4033' from DER, 615' left of centerline, 5978' MSL. Terrain beginning 4034' from DER, 48' left of centerline, up to 5981' MSL. Terrain beginning 4035' from DER, 518' right of centerline, up to 5981' MSL. Terrain beginning 4162' from DER, 251' left of centerline, up to 5985' MSL. Terrain 4163' from DER, 315' right of centerline, 5985' MSL. Terrain 4164' from DER, 882' right of centerline, 5988' MSL. Terrain 4166' from DER, 1449' right of centerline, 6001' MSL. Tree, terrain beginning 4272' from DER, 113' right of centerline, up to 6024' MSL.

BEAVER, UT (CON'T)

BEAVER MUNI (U52) (CON'T)

Rwy 13 (CON'T), terrain 4417' from DER, 656' left of centerline, 5988' MSL. Terrain beginning 4418' from DER, 89' left of centerline, up to 5991' MSL. Terrain 4422' from DER, 1611' right of centerline, 6037' MSL. Terrain beginning 4454' from DER, 274' right of centerline, up to 6039' MSL. Terrain, tree beginning 4550' from DER, 72' right of centerline, up to 6050' MSL. Tree, terrain beginning 4554' from DER, 130' left of centerline, up to 6016' MSL. Terrain beginning 4678' from DER, 436' right of centerline, up to 6057' MSL. Terrain 4806' from DER, 1003' right of centerline, 6060' MSL. Terrain beginning 4807' from DER, 234' right of centerline, up to 6083' MSL. Tree, terrain beginning 4892' from DER, 332' left of centerline, up to 6024' MSL. Terrain, tree beginning 4935' from DER, 31' right of centerline, up to 6093' MSL. Tree, terrain beginning 5122' from DER, 170' left of centerline, up to 6026' MSL. Terrain, tree beginning 5191' from DER, 152' right of centerline, up to 6100' MSL. Terrain, tree beginning 5444' from DER, 9' left of centerline, up to 6037' MSL. Terrain beginning 5828' from DER, 49' left of centerline, up to 6050' MSL. Terrain beginning 5961' from DER, 111' right of centerline, up to 6109' MSL. Terrain beginning 1 NM from DER, 273' right of centerline, up to 6115' MSL. Terrain beginning 1 NM from DER, 71' right of centerline, up to 6116' MSL. Tree, terrain beginning 1 NM from DER, 435' right of centerline, up to 6117' MSL. Terrain beginning 1 NM from DER, 232' right of centerline, up to 6126' MSL. Tree, terrain beginning 1.1 NM from DER, 30' right of centerline, up to 6142' MSL. Terrain, tree beginning 1.1 NM from DER, 192' right of centerline, up to 6146' MSL. Terrain beginning 1.1 NM from DER, 10' left of centerline, up to 6070' MSL. Terrain beginning 1.1 NM from DER, 151' right of centerline, up to 6159' MSL. Terrain, tree beginning 1.2 NM from DER, 110' right of centerline, up to 6182' MSL. Terrain beginning 1.2 NM from DER, 51' left of centerline, up to 6090' MSL. Terrain, tree beginning 1.2 NM from DER, 272' right of centerline, up to 6201' MSL. Terrain beginning 1.3 NM from DER, 91' left of centerline, up to 6109' MSL. Terrain, tree beginning 1.3 NM from DER, 69' right of centerline, up to 6214' MSL. Terrain beginning 1.3 NM from DER, 132' left of centerline, up to 6119' MSL. Terrain, tree beginning 1.3 NM from DER, 29' right of centerline, up to 6237' MSL. Terrain beginning 1.4 NM from DER, 190' right of centerline, up to 6257' MSL. Terrain beginning 1.4 NM from DER, 11' left of centerline, up to 6126' MSL. Terrain beginning 1.4 NM from DER, 150' right of centerline, up to 6264' MSL. Terrain beginning 1.5 NM from DER, 109' right of centerline, up to 6267' MSL. Terrain beginning 1.5 NM from DER, 52' left of centerline, up to 6139' MSL. Terrain beginning 1.5 NM from DER, 271' right of centerline, up to 6277' MSL. Terrain beginning 1.6 NM from DER, 93' left of centerline, up to 6159' MSL. Terrain beginning 1.6 NM from DER, 295' left of centerline, up to 6195' MSL. Terrain beginning 1.6 NM from DER, 27' right of centerline, up to 6280' MSL. Terrain beginning 1.6 NM from DER, 134' left of centerline, up to 6211' MSL. Terrain beginning 1.6 NM from DER, 2037' left of centerline, up to 6254' MSL. Terrain beginning 1.7 NM from DER, 174' left of centerline, up to 6270' MSL. Terrain beginning 1.7 NM from DER, 13' left of centerline, up to 6296' MSL. Terrain beginning 1.7 NM from DER, 148' right of centerline, up to 6296' MSL. Terrain beginning 1.8 NM from DER, 215' left of centerline, up to 6313' MSL. Terrain beginning 1.8 NM from DER, 1552' left of centerline, up to 6336' MSL. Terrain beginning 1.8 NM from DER, 1754' left of centerline, up to 6359' MSL. Terrain beginning 1.8 NM from DER, 310' right of centerline, up to 6333' MSL. Terrain beginning 1.8 NM from DER, 1390' left of centerline, up to 6375' MSL.

CON'T

30 JAN 2020 to 27 FEB 2020

30 JAN 2020 to 27 FEB 2020

**TAKEOFF MINIMUMS, (OBSTACLE) DEPARTURE PROCEDURES, AND
DIVERSE VECTOR AREA (RADAR VECTORS)**

TAKEOFF MINIMUMS, (OBSTACLE) DEPARTURE PROCEDURES, AND DIVERSE VECTOR AREA (RADAR VECTORS)

20030

BEAVER, UT (CON'T)

BEAVER MUNI (U52) (CON'T)

Rwy 13 (CON'T), terrain beginning 1.8 NM from DER, 1593' left of centerline, up to 6395' MSL. Terrain beginning 1.8 NM from DER, 835' right of centerline, up to 6359' MSL. Terrain beginning 1.9 NM from DER, 1795' left of centerline, up to 6408' MSL. Terrain beginning 1.9 NM from DER, 1269' left of centerline, up to 6421' MSL. Terrain beginning 2 NM from DER, 1310' left of centerline, up to 6441' MSL. Terrain beginning 2 NM from DER, 664' left of centerline, up to 6447' MSL.

BLANDING, UT

BLANDING MUNI (BDG)

TAKEOFF MINIMUMS AND (OBSTACLE)

DEPARTURE PROCEDURES

AMDT 1A 14037 (FAA)

TAKEOFF MINIMUMS: **Rwy 35**, 800-1 or std. with a min. climb of 350 feet per NM to 6700.

DEPARTURE PROCEDURE: **Rwy 17**, turn left, thence...

Rwy 21, turn right, thence...

...climb to 9000 on heading 090° and DVC R-223 to DVC VORTAC, then continue climb on course to MEA.

Rwy 35, turn right climb to 9000 via heading 090° and DVC R-223 to DVC VORTAC, then continue climb on course to MEA.

BOULDER CITY, NV

BOULDER CITY MUNI (BVU)

TAKEOFF MINIMUMS AND (OBSTACLE)

DEPARTURE PROCEDURES

ORIG 19339 (FAA)

TAKEOFF MINIMUMS: **Rwy 33**, NA – Obstacles. **Rwy 9**, std. w/min. climb of 280' per NM to 3700 or 2000-3 for VCOA. **Rwy 15**, std. w/min. climb of 285' per NM to 3900 or 2000-3 for VCOA. **Rwy 27**, std. w/min. climb of 450' per NM to 3000 or 2000-3 for VCOA.

DEPARTURE PROCEDURE: **Rwy 9**, climbing right turn on heading 180° thence... **Rwy 15**, climbing left turn on heading 140° thence... **Rwy 27**, climbing left turn on heading 140°. Do not exceed 200 KIAS until turn completion, thence...

... intercept BLD VORTAC R-150, continue climb to 7600 on BLD VORTAC R-150 to LYNYS INT/BLD 21 DME.

VCOA: **Rwys 9, 15, 27**, obtain ATC approval for VCOA when requesting IFR clearance. Climb in visual conditions to cross BLD VORTAC southeast bound at or above 4100 then on BLD VORTAC R-150 to LYNYS INT/BLD 21 DME.

TAKEOFF OBSTACLE NOTES: **Rwy 9**, sign 124' from DER, 351' left of centerline, 4' AGL/2151' MSL. Terrain, vegetation beginning 164' from DER, 198' left of centerline, up to 2155' MSL. Vegetation, terrain beginning 401' from DER, 396' left of centerline, up to 3' AGL/2160' MSL. Buildings, tanks beginning 776' from DER, 561' left of centerline, up to 25' AGL/2188' MSL. Building 1116' from DER, 791' left of centerline, 25' AGL/2190' MSL. Tree 1235' from DER, 593' left of centerline, 33' AGL/2198' MSL. Trees beginning 1319' from DER, 348' left of centerline, up to 32' AGL/2200' MSL. Trees, buildings, pole beginning 1523' from DER, 360' left of centerline, up to 38' AGL/2211' MSL. Trees beginning 1791' from DER, 751' left of centerline, up to 46' AGL/2220' MSL. Trees beginning 1956' from DER, 294' left of centerline, up to 48' AGL/2221' MSL. Catenaries beginning 2205' from DER, 1083' left of centerline, up to 79' AGL/2259' MSL. Catenaries, transmission lines beginning 3391' from DER, 208' left of centerline, up to 76' AGL/2267' MSL. Transmission line, catenary beginning 3730' from DER, 3' right of centerline, up to 98' AGL/2254' MSL.

BOULDER CITY, NV (CON'T)

BOULDER CITY MUNI (BVU) (CON'T)

Rwy 9 (CON'T), tower 3984' from DER, 227' right of centerline, 118' AGL/2275' MSL. Transmission line 3989' from DER, 228' right of centerline, 119' AGL/2276' MSL. Tower 5076' from DER, 1016' left of centerline, 112' AGL/2301' MSL. Tower 5545' from DER, 1916' left of centerline, 110' AGL/2330' MSL. **Rwy 15**, terrain 3' from DER, 395' left of centerline, 2103' MSL. Terrain, vertical point beginning 3' from DER, 112' left of centerline, up to 2105' MSL. **Rwy 27**, terrain 5' from DER, 395' right of centerline, 2119' MSL. Terrain, sign, buildings beginning 15' from DER, 187' right of centerline, up to 2121' MSL. Fence, tree beginning 206' from DER, 170' right of centerline, up to 2' AGL/2123' MSL.

BRIGHAM CITY, UT

BRIGHAM CITY RGND (BMC)

TAKEOFF MINIMUMS AND (OBSTACLE)

DEPARTURE PROCEDURES

AMDT 6B 18088 (FAA)

TAKEOFF MINIMUMS: **Rwy 35**, NA

DEPARTURE PROCEDURE: **Rwy 17**, climbing right turn heading 207° and OGD R-331 to OGD VORTAC before proceeding on course.

TAKEOFF OBSTACLE NOTES: **Rwy 17**, poles 266' from DER, 558' right of centerline, 30' AGL/4258' MSL.

BRYCE CANYON, UT

BRYCE CANYON (BCE)

TAKEOFF MINIMUMS AND (OBSTACLE)

DEPARTURE PROCEDURES

AMDT 1 11069 (FAA)

DEPARTURE PROCEDURE: use BRYCE DEPARTURE.

BULLHEAD CITY, AZ

LAUGHLIN/BULLHEAD INTL (IFP)

TAKEOFF MINIMUMS AND (OBSTACLE)

DEPARTURE PROCEDURES

AMDT 2 17061 (FAA)

TAKEOFF MINIMUMS: **Rwy 16**, standard w/min. climb of 285' per NM to 1700, or 1700-3 for VCOA. **Rwy 34**, standard w/min. climb of 500' per NM to 5500, or 1700-3 for VCOA.

DEPARTURE PROCEDURE: **Rwy 16**, climb on heading 164° and EED VORTAC R-331 to EED VORTAC. **Rwy 34**, climb on heading 344° to 2200, then climbing right turn direct EED VORTAC. All aircraft climb in EED VORTAC holding pattern (E, right turns, 257° inbound) to cross EED VORTAC at or above MEA for direction of flight before proceeding on course.

VCOA: **Rwy 16**, obtain ATC approval for VCOA when requesting IFR clearance. Climb in visual conditions to cross Laughlin/Bullhead Intl airport at or above 2300, then continue climbing on heading 155 and EED VORTAC R-335 to EED VORTAC. **Rwy 34**, obtain ATC approval for VCOA when requesting IFR clearance. Climb in visual conditions to cross Laughlin/ Bullhead Intl airport at or above 2300, then continue climbing on heading 155 and EED VORTAC R-335 to EED VORTAC.

TAKEOFF OBSTACLE NOTES: **Rwy 16**, grd 188' from DER, 83' left of centerline, 715' MSL. Bush 349' from DER, 516' right of centerline, 722' MSL. Grd 390' from DER, 528' left of centerline, 719' MSL. Grd beginning 484' from DER, 481' left of centerline, up to 723' MSL. Bush 532' from DER, 642' right of centerline, 727' MSL. Grd beginning 568' from DER, 490' left of centerline, up to 727' MSL. Bush 700' from DER, 663' right of centerline, 728' MSL. Grd 798' from DER, 466' left of centerline, 729' MSL. Bush, grd beginning 801' from DER, 541' left of centerline, up to 734' MSL. **CON'T**

TAKEOFF MINIMUMS, (OBSTACLE) DEPARTURE PROCEDURES, AND DIVERSE VECTOR AREA (RADAR VECTORS)

20030

SW-4

TAKEOFF MINIMUMS, (OBSTACLE) DEPARTURE PROCEDURES, AND DIVERSE VECTOR AREA (RADAR VECTORS)

20030

BULLHEAD CITY, AZ (CON'T)

LAUGHLIN/BULLHEAD INTL (IFP) (CON'T)

Rwy 16 (CON'T), tree, bush, grd beginning 910' from DER, 557' left of centerline, up to 745' MSL. Bush, grd beginning 1103' from DER, from 204' right to 1008' left of centerline, up to 777' MSL. Grd, bush beginning 2134' from DER, 731' left of centerline, up to 778' MSL. Grd, bush beginning 2214' from DER, 870' left of centerline, up to 786' MSL. Grd beginning 2288' from DER, 801' left of centerline, up to 792' MSL. Grd, tree beginning 2328' from DER, 724' left of centerline, up to 797' MSL. Grd beginning 2811' from DER, 1128' left of centerline, up to 798' MSL. Grd beginning 2915' from DER, 1166' left of centerline, up to 800' MSL. Grd beginning 3022' from DER, 1185' left of centerline, up to 804' MSL. Grd beginning 3123' from DER, 1221' left of centerline, up to 809' MSL. Grd beginning 3219' from DER, 1257' left of centerline, up to 814' MSL. Grd beginning 3325' from DER, 1284' left of centerline, up to 818' MSL. Grd beginning 3428' from DER, 1210' left of centerline, up to 821' MSL. Grd beginning 3528' from DER, 1241' left of centerline, up to 824' MSL. Grd, bush, tank beginning 3632' from DER, 1157' left of centerline, up to 825' MSL. Tank 4810' from DER, 1528' left of centerline, 848' MSL. Grd 5412' from DER, 1872' left of centerline, 852' MSL. Grd, bushes beginning 5511' from DER, 926' left of centerline, up to 865' MSL. Bushes beginning 5742' from DER, 1483' left of centerline, up to 883' MSL. Grd, bushes beginning 5774' from DER, 793' left of centerline, up to 891' MSL. Bush 5852' from DER, 1933' left of centerline, 904' MSL. Grd, pole, bushes beginning 5856' from DER, 24' left of centerline, up to 920' MSL. Trees, bushes, grd, tank beginning 1.2 NM from DER, left and right of centerline, up to 962' MSL. Trees, bushes, grd beginning 1.3 NM from DER, 1' left of centerline, up to 985' MSL. Bush 1.4 NM from DER, 1941' left of centerline, 993' MSL. Bushes, grd, tank, pole beginning 1.5 NM from DER, 1919' left of centerline, up to 1036' MSL. Bushes, vehicles on road, trees, pole beginning 1.9 NM from DER, 2218' left of centerline, up to 1086' MSL. Tanks, bushes, pole beginning 2.2 NM from DER, 3103' left of centerline, up to 1121' MSL. **Rwy 34**, airfield light 40' from DER, 148' right of centerline, 627' MSL. T-1 twr, tree beginning 1818' from DER, 620' right of centerline, up to 65' AGL/687' MSL. Pole, tree beginning 2214' from DER, 629' right of centerline, up to 709' MSL. Pole, tree beginning 2638' from DER, 646' right of centerline, up to 719' MSL. Pole, bushes, grd beginning 3054' from DER, 663' right of centerline, up to 741' MSL. Pole, bush, bldg, grd, vehicles on road beginning 3661' from DER, 691' right of centerline, up to 773' MSL. Poles, bushes, grd, vehicles on road, trees, bldgs, flagpole beginning 4024' from DER, 705' right of centerline, up to 796' MSL. Comm twr 5197' from DER, 1015' right of centerline, 816' MSL. Comm twr 5278' from DER, 1149' right of centerline, 821' MSL. T-1 twr 1.6 NM from DER, 719' left of centerline, 894' MSL. Grd beginning 1.8 NM from DER, 3419' right of centerline, up to 963' MSL. Grd 2.1 NM from DER, 3212' right of centerline, 1018' MSL. Grd, tree beginning 2.2 NM from DER, 1351' right of centerline, up to 1079' MSL. Grd 2.6 NM from DER 3025' left of centerline, 2010' MSL.

CARSON CITY, NV

CARSON (CXP)

TAKEOFF MINIMUMS AND (OBSTACLE)
DEPARTURE PROCEDURES
ORIG 08325 (FAA)

TAKEOFF MINIMUMS: **Rwy 27**, NA-obstacles.
DEPARTURE PROCEDURE: **Rwy 9**, use JIMPA
DEPARTURE.

CASA GRANDE, AZ

CASA GRANDE MUNI (CGZ)

TAKEOFF MINIMUMS AND (OBSTACLE)
DEPARTURE PROCEDURES
AMDT 1B 14037 (FAA)

TAKEOFF MINIMUMS: **Rwy 5**, 300-1 or std. w/ min. climb of 354' per NM to 1700.

DEPARTURE PROCEDURE: **Rwy 5**, climbing right turn direct TFD VORTAC, thence...

Rwy 23, climb direct TFD VORTAC, thence...
...continue climb in holding pattern (SW, right turns, 048° inbound) to MEA for direction of flight.

TAKEOFF OBSTACLE NOTES: **Rwy 5**, pole 4034' from DER, 805' left of centerline, 109' AGL/1593' MSL.

CEDAR CITY, UT

CEDAR CITY RGNL (CDC)

TAKEOFF MINIMUMS AND (OBSTACLE)
DEPARTURE PROCEDURES
AMDT 3A 17229 (FAA)

TAKEOFF MINIMUMS: **Rwy 8**, 4200-3 for VCOA. **Rwy 20**, std. w/min. climb of 290' per NM to 7300 or 4200-3 for VCOA. **Rwy 26**, std. w/min. climb of 255' per NM to 7000 or 4200-3 for VCOA.

DEPARTURE PROCEDURE: **Rwys 2, 8**, climbing left turn direct EHK VOR/DME, thence... **Rwys 20, 26**, climbing right turn direct EHK VOR/DME, thence...
...continue climb on EHK VOR/DME R-278 until reaching the MEA/MCA for direction of flight.

VCOA: **Rwys 8, 20, 26**, obtain ATC approval for VCOA when requesting IFR clearance. Climb in visual conditions to cross Cedar City Rgnl airport at or above 9700, then proceed on EHK VOR/DME R-180 direct EHK VOR/DME, then on EHK VOR/DME R-278 until reaching the MEA/MCA for direction of flight.

TAKEOFF OBSTACLE NOTES: **Rwy 2**, sign abeam DER, 313' right of centerline, 3' AGL/5604' MSL. Terrain and bush beginning 145' from DER, 420' right of centerline, up to 5608' MSL. **Rwy 8**, terrain 3' from DER, 112' right of centerline, 5622' MSL. Terrain 18' from DER, 221' right of centerline, 5623' MSL. Terrain beginning 30' from DER, 178' right of centerline, up to 5624' MSL. Terrain 122' from DER, 473' right of centerline, 5626' MSL. Bush 125' from DER, 234' left of centerline, 5628' MSL. Terrain 193' from DER, 491' right of centerline, 5627' MSL. Fence and vehicles on road beginning 638' from DER, 33' right of centerline, up to 10' AGL/5639' MSL. Vehicles on road 686' from DER, 136' right of centerline, 5640' MSL. Vehicles on road 701' from DER, 242' right of centerline, 5641' MSL. Transmission tower 2885' from DER, 369' right of centerline, 51' AGL/5707' MSL. Transmission tower 2902' from DER, 260' right of centerline, 53' AGL/5710' MSL. Pole and transmission towers beginning 2918' from DER, 70' right of centerline, up to 62' AGL/5719' MSL. Transmission towers beginning 3004' from DER, 39' left of centerline, up to 49' AGL/5705' MSL. Pole 3175' from DER, 564' left of centerline, 56' AGL/5710' MSL. **Rwy 20**, runway light 10' from DER, 54' right of centerline, 2' AGL/5579' MSL. Terrain 12' from DER, 98' left of centerline, 5579' MSL. Runway light and sign beginning 31' from DER, 275' left of centerline, up to 3' AGL/5583' MSL. Pole 941' from DER, 446' right of centerline, 34' AGL/5604' MSL.

CON'T

TAKEOFF MINIMUMS, (OBSTACLE) DEPARTURE PROCEDURES, AND DIVERSE VECTOR AREA (RADAR VECTORS)

20030

SW-4

TAKEOFF MINIMUMS, (OBSTACLE) DEPARTURE PROCEDURES, AND DIVERSE VECTOR AREA (RADAR VECTORS)

CEDAR CITY, UT (CON'T)

CEADAR CITY RGNL (CDC) (CON'T)

Rwy 20 (CON'T), Pole 1066' from DER, 363' right of centerline, 38' AGL/5608' MSL. Elevator and tank beginning 2081' from DER, 1051' left of centerline, up to 105' AGL/5690' MSL. Tree 3789' from DER, 1512' left of centerline, 5692' MSL. Tree 4004' from DER, 1526' left of centerline, 5693' MSL. Tree 4265' from DER, 1530' left of centerline, 5718' MSL. Trees beginning 4278' from DER, 1546' left of centerline, up to 5721' MSL. Trees beginning 4526' from DER, 1533' left of centerline, up to 5733' MSL. Trees beginning 4858' from DER, 1520' left of centerline, up to 5737' MSL. Tree 5456' from DER, 1835' left of centerline, 5748' MSL. Building and tree beginning 5497' from DER, 1518' left of centerline, up to 21' AGL/5759' MSL. Pole and tree beginning 5737' from DER, 1543' left of centerline, up to 20' AGL/5769' MSL. Pole and tree beginning 5964' from DER, 1545' left of centerline, up to 20' AGL/5779' MSL. Trees beginning 1 NM from DER, 1665' left of centerline, up to 5783' MSL. Tree 1.2 NM from DER, 2080' left of centerline, 5800' MSL. Trees beginning 1.2 NM from DER, 2049' left of centerline, up to 5814' MSL. Trees beginning 1.3 NM from DER, 2107' left of centerline, up to 5836' MSL. Trees beginning 1.3 NM from DER, 2244' left of centerline, up to 5840' MSL. Trees beginning 1.3 NM from DER, 2048' left of centerline, up to 5849' MSL. Trees beginning 1.3 NM from DER, 2283' left of centerline, up to 5852' MSL. Trees beginning 1.4 NM from DER, 2301' left of centerline, up to 5871' MSL. Tree 1.4 NM from DER, 2599' left of centerline, 5874' MSL. Trees beginning 1.4 NM from DER, 2436' left of centerline, up to 5895' MSL. Pole and tree beginning 1.6 NM from DER, 2822' left of centerline, up to 50' AGL/5944' MSL. Pole 2.3 NM from DER, 3922' left of centerline, 34' AGL/5952' MSL. **Rwy 26**, sign 71' from DER, 167' right of centerline, 6' AGL/5584' MSL. Pole 1375' from DER, 319' left of centerline, 44' AGL/5614' MSL.

CHANDLER, AZ

CHANDLER MUNI (CHD)

TAKEOFF MINIMUMS AND (OBSTACLE)

DEPARTURE PROCEDURES

AMDT 1 14261 (FAA)

DEPARTURE PROCEDURE: **Rwys 4L, 4R**, climbing left turn heading 220° to intercept TFD VORTAC R-350 southbound to TFD VORTAC. **Rwys 22L, 22R**, climbing left turn heading 190° to intercept TFD VORTAC R-350 southbound to TFD VORTAC.

TAKEOFF OBSTACLE NOTES: **Rwy 4L**, antenna on building 69' from DER, 515' left of centerline, 25' AGL/1281' MSL. Tower 981' from DER, 615' left of centerline, 80' AGL/1319' MSL. Trees and poles beginning 1100' from DER, 458' left of centerline, up to 30' AGL/1272' MSL. **Rwy 4R**, poles beginning 1298' from DER, 56' left of centerline, up to 36' AGL/1283' MSL. **Rwy 22L**, tree 336' from DER, 511' right of centerline, 15' AGL/1250' MSL. Tree 988' from DER, 756' left of centerline, 30' AGL/1266' MSL. **Rwy 22R**, building 30' from DER, 441' right of centerline, 24' AGL/1254' MSL. Vehicles beginning 199' from DER, 271' right of centerline, up to 15' AGL/1246' MSL. Poles and trees beginning 471' from DER, 45' left of centerline, up to 36' AGL/1290' MSL. Trees and poles beginning 1088' from DER, 50' right of centerline, up to 36' AGL/1274' MSL.

DIVERSE VECTOR AREA (RADAR VECTORS)

AMDT 1 15232 (FAA)

Rwys 4L, 4R, 22L, 22R, heading as assigned by ATC.

CHANDLER, AZ (CON'T)

STELLAR AIRPARK (P19)

TAKEOFF MINIMUMS AND (OBSTACLE)

DEPARTURE PROCEDURES

AMDT 3 18340 (FAA)

DEPARTURE PROCEDURE: **Rwy 17**, climbing left turn heading 150° thence... **Rwy 35**, climbing right turn heading 190° thence...

... Intercept TFD VORTAC R-350 southbound to TFD VORTAC.

TAKEOFF OBSTACLE NOTES: **Rwy 17**, pole 648' from DER, 482' left of centerline, 52' AGL/1212' MSL. Pole 656' from DER, 190' left of centerline, 52' AGL/1213' MSL. Poles beginning 661' from DER, 39' right of centerline, up to 34' AGL/1196' MSL. Poles beginning 671' from DER, 420' right of centerline, up to 52' AGL/1216' MSL. Transmission line, sign beginning 869' from DER, 288' right of centerline, up to 50' AGL/1224' MSL. Sign 906' from DER, 260' left of centerline, 42' AGL/1214' MSL. **Rwy 35**, pole 72' from DER, 357' left of centerline, 30' AGL/1208' MSL. Building 777' from DER, 300' right of centerline, 30' AGL/1218' MSL. Building 1282' from DER, 767' right of centerline, 45' AGL/1233' MSL.

CLIFTON/MORENCI, AZ

GREENLEE COUNTY (CFT)

TAKEOFF MINIMUMS AND (OBSTACLE)

DEPARTURE PROCEDURES

ORIG 10210 (FAA)

DEPARTURE PROCEDURE: Use SAN SIMON DEPARTURE.

COLORADO CITY, AZ

COLORADO CITY MUNI (AZC)

TAKEOFF MINIMUMS AND (OBSTACLE)

DEPARTURE PROCEDURES

ORIG-A 19003 (FAA)

TAKEOFF MINIMUMS: **Rwy 2**, NA-Terrain. **Rwy 20**, 300-2/4 or std. w/min. climb of 203' per NM to 5300, or alternatively, with std. takeoff minimums and a normal 200' per NM climb gradient, takeoff must occur no later than 1200' prior to DER.

DEPARTURE PROCEDURE: **Rwy 11**, climbing right turn, thence... **Rwy 20**, climbing left turn, thence... **Rwy 29**, climbing left turn, thence...

...Intercept bearing 165° from AZC NDB to 7400 before proceeding on course.

TAKEOFF OBSTACLE NOTES: **Rwy 11**, vegetation beginning 16' from DER, 213' left of centerline, up to 4861' MSL. **Rwy 20**, tree 27' from DER, 275' left of centerline, 4843' MSL. Vegetation 45' from DER, 26' right of centerline, 4843' MSL. Vehicles on road beginning 67' from DER, 389' left of centerline, up to 4853' MSL. Tree 1.8 NM from DER, 2971' right of centerline, 5118' MSL. **Rwy 29**, sign and tree beginning 15' from DER, 123' right of centerline, up to 5' AGL/4850' MSL. Vegetation 60' from DER, 46' left of centerline, 4849' MSL.

30 JAN 2020 to 27 FEB 2020

30 JAN 2020 to 27 FEB 2020

TAKEOFF MINIMUMS, (OBSTACLE) DEPARTURE PROCEDURES, AND DIVERSE VECTOR AREA (RADAR VECTORS)

TAKEOFF MINIMUMS, (OBSTACLE) DEPARTURE PROCEDURES, AND DIVERSE VECTOR AREA (RADAR VECTORS)

20030

COOLIDGE, AZ

COOLIDGE MUNI (P08)

TAKEOFF MINIMUMS AND (OBSTACLE)
DEPARTURE PROCEDURES
ORIG 96284 (FAA)

DEPARTURE PROCEDURE: **Rwys 5,35**, climbing left turn heading 280° to intercept TFD R-063, then via R-063 to TFD VORTAC before proceeding on course.

Rwy 17, climbing right turn heading 240° to intercept TFD R-090, then via R-090 to TFD VORTAC before proceeding on course. **Rwy 23**, climb runway heading to intercept TFD R-090, then via R-090 to TFD VORTAC before proceeding on course.

COTTONWOOD, AZ

COTTONWOOD (P52)

TAKEOFF MINIMUMS AND (OBSTACLE)
DEPARTURE PROCEDURES
ORIG 16147 (FAA)

DEPARTURE PROCEDURE: Use MINGY
DEPARTURE.

DAVIS-MONTHAN AFB (KDMA)

TUCSON, AZ

TAKEOFF MINIMUMS AND (OBSTACLE)
DEPARTURE PROCEDURES
AMDT 2 19227

TAKEOFF MINIMUMS: **Rwy 12**, 5300-3, or std w/min climb of 240'/NM to 3200.

DEPARTURE PROCEDURE: **Rwy 12**, climb to 10,000 on track 125°, intercept DMA R-120 for RADAR vectors. **Rwy 30**, climb to 6500 on track 305°, intercept DMA R-312 for RADAR vectors.

TAKEOFF OBSTACLE NOTES: **Rwy 12**, terrain 8' from DER, 424' left of cntrln, 2707' MSL. Terrain 0' from DER, 500' left of cntrln, 2707' MSL. Aircraft tail 81' from DER, 572' left of cntrln, 39' AGL/2748' MSL. Pole 3511' from DER, 1052' left of cntrln, 45' AGL/2776' MSL. Vehicle 1710' from DER, 195' right of cntrln, 10' AGL/2727' MSL. Vehicle 1498' from DER, 787' left of cntrln, 10' AGL/2727' MSL. Terrain 1.1 NM from DER, 1409' left of cntrln, 130' AGL/2892' MSL. Terrain 5880' from DER, 2034' left of cntrln, 130' AGL/2886' MSL.

Rwy 30, terrain 0' from DER, 500' left of cntrln, 2591' MSL. Terrain 0' from DER, 500' right of cntrln, 2592' MSL. Terrain 13' from DER, 494' right of cntrln, 2592' MSL. Terrain 34' from DER, 220' left of cntrln, 130' AGL/2720' MSL. Aircraft tail 34' inward of DER, 510' right of cntrln, 39' AGL/2630' MSL. Pylon 3296' from DER, 1373' left of cntrln, 69' AGL/2642' MSL. Pylon 3415' from DER, 1170' left of cntrln, 98' AGL/2665' MSL. Pylon 3771' from DER, 882' left of cntrln, 98' AGL/2665' MSL. Pylon 4112' from DER, 607' left of cntrln, 98' AGL/2664' MSL. Pylon 4455' from DER, 333' left of cntrln, 98' AGL/2672' MSL.

DELTA, UT

DELTA MUNI (DTA)

TAKEOFF MINIMUMS AND (OBSTACLE)
DEPARTURE PROCEDURES
ORIG-A 16203 (FAA)

TAKEOFF MINIMUMS: **Rwy 17**, std. with a min. climb of 412' per NM to 6600, or 1800-3 for climb in visual conditions. VCOA procedure NA at night.

DEPARTURE PROCEDURE: **Rwy 35**, Climb heading 346 to 5800, then climbing left turn heading 180 and DTA VORTAC R-310 to DTA VORTAC, thence... **Rwy 17**, Climb on DTA VORTAC R-347 to DTA VORTAC, thence...

...continue climb in DTA VORTAC holding pattern (hold s, lt, 004.00 inbound) to cross DTA VORTAC at or above MEA/MCA for route of flight.

VCOA: **Rwy 17**, obtain ATC approval for climb in visual conditions when requesting IFR clearance. Climb in visual conditions to cross Delta Municipal airport southbound at or above 6400, then on DTA VORTAC R-347 to DTA VORTAC, thence... ..continue climb in DTA VORTAC holding pattern (hold s, lt, 004.00 inbound) to cross DTA VORTAC at or above MEA/MCA for route of flight.

TAKEOFF OBSTACLE NOTES: **Rwy 35**, terrain 17' from DER, 66' left of centerline 4760' MSL. Vehicle on road 227' from DER, 457' right of centerline, 15' AGL/4771' MSL. **Rwy 17**, terrain 12' from DER, 462' left of centerline 4757' MSL. Bush 105' from DER, 446' left of centerline 4759' MSL.

DOUGLAS BISBEE, AZ

BISBEE- DOUGLAS INTL (DUG)

TAKEOFF MINIMUMS AND (OBSTACLE)
DEPARTURE PROCEDURES
AMDT 1 12040 (FAA)

DEPARTURE PROCEDURE: **Rwys 8,17**, climbing right turn on heading 330° to intercept DUG VORTAC R-286 to 9500. **Rwy 26**, climbing right turn to intercept DUG VORTAC R-286 to 9500. **Rwy 35**, climbing left turn to intercept DUG VORTAC R-286 to 9600.

TAKEOFF OBSTACLE NOTES: **Rwy 8**, trees and terrain beginning 145' from DER, 51' left of centerline, up to 8' AGL/4220' MSL. Trees and terrain beginning 22' from DER, 247' right of centerline, up to 13' AGL/4197' MSL. **Rwy 17**, trees and terrain beginning 91' from DER, 76' left of centerline, up to 5' AGL/4118' MSL. Trees and terrain beginning 12' from DER, 146' right of centerline, up to 5' AGL/4115' MSL. **Rwy 26**, tree and terrain beginning 16' from DER, 233' left of centerline, up to 5' AGL/4167' MSL. Trees and terrain beginning 17' from DER, 32' right of centerline, up to 7' AGL/4167' MSL.

Rwy 35, trees and terrain beginning 118' from DER, 15' left of centerline, up to 6' AGL/4190' MSL. Tree and terrain beginning 75' from DER, 100' right of centerline, up to 11' AGL/4200' MSL.

30 JAN 2020 to 27 FEB 2020

30 JAN 2020 to 27 FEB 2020

TAKEOFF MINIMUMS, (OBSTACLE) DEPARTURE PROCEDURES, AND DIVERSE VECTOR AREA (RADAR VECTORS)

20030

SW-4

TAKEOFF MINIMUMS, (OBSTACLE) DEPARTURE PROCEDURES, AND DIVERSE VECTOR AREA (RADAR VECTORS)

DUCHESNE, UT

DUCHESNE MUNI (U69)
TAKEOFF MINIMUMS AND (OBSTACLE)
DEPARTURE PROCEDURES
AMDT 1 19283 (FAA)

TAKEOFF MINIMUMS: **Rwys 8, 26**, NA - Environmental.
Rwy 35, std. w/min. climb of 235' per NM to 6900 or
1100-3 for VCOA.

DEPARTURE PROCEDURE: **Rwy 17**, climbing left turn
direct MTU VOR/DME, thence... **Rwy 35**, climbing right
turn direct MTU VOR/DME, thence...
...continue climb in MTU VOR/DME holding pattern (hold
northeast, right turns, 213° inbound) to cross MTU VOR/
DME at or above MEA for route of flight.

VCOA: **Rwy 35**, obtain ATC approval for VCOA when
requesting IFR clearance. Climb in visual conditions to
cross Duchesne Muni Airport at or above 6800 then on
MTU VOR/DME R-269 to MTU VOR/DME. Continue
climb in MTU VOR/DME holding pattern (hold Northeast,
right turns, 213° inbound) to cross MTU VOR/DME at or
above MEA for route of flight.

TAKEOFF OBSTACLE NOTES: **Rwy 35**, vehicles on
road beginning 315' from DER, 95' right of centerline, up
to 15' AGL/5844' MSL. Vehicles on road beginning 327'
from DER, 29' left of centerline, up to 15' AGL/5854'
MSL. Equipment 415' from DER, 515' left of centerline,
17' AGL/5856' MSL. Building 876' from DER, 617' left of
centerline, 30' AGL/5869' MSL. Pole 1048' from DER,
682' left of centerline, 40' AGL/5889' MSL.

ELKO, NV

ELKO RGNL (EKO)
TAKEOFF MINIMUMS AND (OBSTACLE)
DEPARTURE PROCEDURES
AMDT 6 16147 (FAA)

TAKEOFF MINIMUMS: **Rwys 12,30**, NA-ATC. **Rwy 6**, std.
w/min. climb of 500' per NM to 7200, or 2000-3 for climb
in visual conditions. **Rwy 24**, std. w/min. climb of 390'
per NM to 8400, or 2000-3 for climb in visual conditions.

DEPARTURE PROCEDURE: **Rwy 6**, climb heading 057°
to 6500, then climbing right turn direct BQU VOR/DME,
thence... **Rwy 24**, climb heading 237° to 6100, then
climbing left turn direct BQU VOR/DME, thence...
...Continue climb in BQU VOR/DME holding pattern
(hold south, left turns, 340° inbound) to cross BQU VOR/
DME at or above MEA/MCA for route of flight.

VCOA: **Rwy 6, 24**, obtain ATC approval for climb in visual
conditions when requesting IFR clearance. Climb in
visual conditions to cross Elko Rgnl airport at or above
7000, then proceed to BQU VOR/DME and continue
climb in BQU VOR/DME holding pattern (hold south, left
turns, 340° inbound) to cross BQU VOR/DME at or
above MEA/MCA for route of flight.

TAKEOFF OBSTACLE NOTES: **Rwy 6**, OL on ltd wsk
253' from DER, 155' right of centerline, 5095' MSL. Lt
poles, beginning 277' from DER, 332' right of centerline,
up to 5097' MSL. Trees, buildings, and ants on ol
buildings, beginning 676' from DER, 209' right of
centerline, up to 5111' MSL. Pole 765' from DER, 422'
left of centerline, 5110' MSL. Ols on poles, beginning
903' from DER, 435' left of centerline, up to 5130' MSL.
Trees, poles, and ols on poles, beginning 961' from
DER, 130' left of centerline, up to 5207' MSL. Ant 3007'
from DER, 84' right of centerline, 5165' MSL. Tree 3676'
from DER, 251' right of centerline, 5191' MSL. **Rwy 24**,
vehicles on road, beginning 672' from DER, 315' right of
centerline, up to 5075' MSL. Poles, trees beginning
1179' from DER, 171' right of centerline, up to 36'
AGL/5100' MSL. Poles, beginning 1243' from DER, 663'
left of centerline, up to 39' AGL/5085' MSL. Signs,
beginning 1566' from DER, 714' right of centerline, up to
5128' MSL. Signs, elevators, silos beginning 2155' from
DER, 437' right of centerline, up to 44' AGL/5132' MSL.

ELY, NV

ELY AIRPORT-YELLAND FIELD (ELY)
TAKEOFF MINIMUMS AND (OBSTACLE)
DEPARTURE PROCEDURES
AMDT 2 11181 (FAA)
DEPARTURE PROCEDURE: Use ELY DEPARTURE.

EUREKA, NV

EUREKA (05U)
TAKEOFF MINIMUMS AND (OBSTACLE)
DEPARTURE PROCEDURES
ORIG 13234 (FAA)
TAKEOFF MINIMUMS: **Rwy 18**, NA-Terrain.
DEPARTURE PROCEDURE: use MINES (RNAV)
DEPARTURE.

FALLON, NV

FALLON MUNI (FLX)
TAKEOFF MINIMUMS AND (OBSTACLE)
DEPARTURE PROCEDURES
AMDT 1A 19171 (FAA)
TAKEOFF MINIMUMS: **Rwys 13, 31**, NA - Environmental
DEPARTURE PROCEDURE: **Rwy 3**, climbing left turn,
thence... **Rwy 21**, climbing right turn, thence...
...to 9300 direct HZN VORTAC, continue climb in HZN
VORTAC holding pattern (hold west, left turn 075°
inbound) cross HZN VORTAC at or above 9300 before
proceeding on course, continue climb to MEA or
assigned altitude.

TAKEOFF OBSTACLE NOTES: **Rwy 3**, sign, trees
beginning 9' from DER, 37' left of centerline, up to 5'
AGL/3966' MSL. Tree 121' from DER, 173' right of
centerline, 3966' MSL. Traverse way beginning 134' from
DER, 357' right of centerline, up to 3972' MSL. Trees
beginning 146' from DER, 469' left of centerline, up to 6'
AGL/3969' MSL. Traverse way, tree beginning 315' from
DER, 232' right of centerline, up to 3974' MSL. Tree
1068' from DER, 199' left of centerline, 37' AGL/3995'
MSL. Trees beginning 1086' from DER, 208' left of
centerline, up to 4002' MSL. Tree 1093' from DER, 193'
right of centerline, 33' AGL/3992' MSL. Trees, pole
beginning 1214' from DER, 306' left of centerline, up to
61' AGL/4018' MSL. Trees beginning 2148' from DER,
819' left of centerline, up to 4023' MSL. Tree 2319' from
DER, 763' left of centerline, 58' AGL/4024' MSL. Trees
beginning 2960' from DER, 663' left of centerline, up to
97' AGL/4054' MSL. **Rwy 21**, trees, terrain beginning 31'
from DER, 150' left of centerline, up to 3969' MSL.
Traverse way 32' from DER, 497' right of centerline,
3981' MSL. Pole 112' from DER, 397' right of centerline,
26' AGL/3991' MSL. Tree 139' from DER, 401' left of
centerline, 4' AGL/3970' MSL. Poles, traverse way,
vegetation, building beginning 149' from DER, 19' right of
centerline, up to 36' AGL/4002' MSL. Traverse way
beginning 380' from DER, 308' left of centerline, up to
3984' MSL. Traverse way beginning 525' from DER, 22'
left of centerline, up to 3985' MSL. Tree 1286' from DER,
785' right of centerline, 48' AGL/4016' MSL. Tree 1407'
from DER, 840' right of centerline, 57' AGL/4025' MSL.
Pole 1813' from DER, 798' left of centerline, 39'
AGL/4013' MSL. Tree 1896' from DER, 869' right of
centerline, 76' AGL/4040' MSL.

30 JAN 2020 to 27 FEB 2020

30 JAN 2020 to 27 FEB 2020

TAKEOFF MINIMUMS, (OBSTACLE) DEPARTURE PROCEDURES, AND DIVERSE VECTOR AREA (RADAR VECTORS)

TAKEOFF MINIMUMS, (OBSTACLE) DEPARTURE PROCEDURES, AND DIVERSE VECTOR AREA (RADAR VECTORS)

20030

FALLON NAS (VAN VOORHIS FIELD) (KNFL)

FALLON, NV

TAKEOFF MINIMUMS AND (OBSTACLE)
DEPARTURE PROCEDURES
AMDT 1 19003

TAKEOFF MINIMUMS: **Rwys 13L/R**, diverse departures authorized 131° CW 311°, std. w/min climb rate of 245'/NM to 7200. **Rwys 31L/R**, diverse departures authorized 131° CW 083°, std. w/min climb rate of 252'/NM to 9800. **Rwy 7**, diverse departures authorized, std. w/min climb rate of 295'/NM to 12200. **Rwy 25**, diverse departures authorized 132° CW 073°, std. w/min climb rate of 250'/NM to 12200.

FILLMORE, UT

FILLMORE MUNI (FOM)

TAKEOFF MINIMUMS AND (OBSTACLE)
DEPARTURE PROCEDURES
ORIG 10322 (FAA)

TAKEOFF MINIMUMS: **Rwy 4**, std. w/ min. climb of 250' per NM to 6200, or 1800-3 for climb in visual conditions.

DEPARTURE PROCEDURE: **Rwy 4**, climbing left turn to 9600 on DTA R-141 to DTA VORTAC, climb in DTA VORTAC holding pattern (South, left turns, 004° inbound) to cross DTA VORTAC at or above MEA for route of flight or for climb in visual conditions cross Fillmore Muni airport Northwest bound at or above 6600, then climb to 9600 on DTA R-146 to DTA VORTAC. Continue climb in DTA VORTAC holding pattern (South, left turns, 004° inbound) to cross DTA VORTAC at or above MEA for route of flight. **Rwy 22**, climbing right turn to 9600 on DTA R-152 to DTA VORTAC, climb in DTA VORTAC holding pattern (South, left turns, 004° inbound) to cross DTA VORTAC at or above MEA for route of flight.

TAKEOFF OBSTACLE NOTES: **Rwy 4**, light 60' from DER, 393' left of centerline, 8' AGL/4987' MSL. Windssock 129' from DER, 301' left of centerline, 21' AGL/5000' MSL. Rising terrain 132' from DER, 385' right of centerline, 4989' MSL. Fence beginning 138' from DER, 174' right of centerline, up to 15' AGL/4996' MSL. Buildings beginning 259' from DER, 455' right of centerline, up to 13' AGL/5012' MSL. Beacon 311' from DER, 505' left of centerline, 52' AGL/5031' MSL. Trees beginning 333' from DER, 242' left of centerline, up to 37' AGL/5034' MSL. Vehicle on road beginning 472' from DER, 608' left to 1093' right of centerline, up to 35' AGL/5073' MSL. Pole 488' from DER, 620' left of centerline, 38' AGL/5037' MSL. Windmeter, 623' from DER, 342' left of centerline, 9' AGL/5008' MSL. Building 873' from DER, 196' left of centerline, 17' AGL/5016' MSL. **Rwy 22**, fence 97' from DER, 302' left of centerline, 15' AGL/4916' MSL. Vehicle on road beginning 228' from DER, 398' left of centerline, up to 9' AGL/4928' MSL.

FLAGSTAFF, AZ

FLAGSTAFF PULLIAM (FLG)

TAKEOFF MINIMUMS AND (OBSTACLE)
DEPARTURE PROCEDURES
AMDT 2A 14037 (FAA)

DEPARTURE PROCEDURE: **Rwy 3**, turn right. **Rwy 21**, turn left. Aircraft departing FLG R-160 CW R-175 climb on course. All others climb southbound on FLG R-172 to 9000, then climbing left turn direct FLG VOR/DME. TAKEOFF OBSTACLE NOTES: **Rwy 21**, trees beginning 73' from DER, left and right of centerline, up to 85' AGL/7065' MSL.

FORT HUACHUCA SIERRA VISTA, AZ SIERRA VISTA MUNI-LIBBY AAF (FHU) TAKEOFF MINIMUMS AND (OBSTACLE) DEPARTURE PROCEDURES AMDT 4 18256 (FAA)

TAKEOFF MINIMUMS: **Rwy 21**, NA-terrain. **Rwy 26**, std. w/min. climb of 335' per NM to 7300, or 2800-3 for VCOA

DEPARTURE PROCEDURE: **Rwys 3, 8, 12**, climbing left turn... thence. **Rwys 26, 30**, climbing right turn... thence. ...all aircraft, intercept FHU VOR/DME R-021 to TOMBS INT/FHU 12.76 DME, continue climb in TOMBS holding pattern (hold north, left turns, 201° inbound) to 9500 before proceeding on course.

VCOA: **Rwy 26**, obtain ATC approval for VCOA when requesting IFR clearance. Climb in visual conditions to cross Sierra Vista Muni-Libby AAF airport at or above 7400' MSL then intercept and proceed on FHU VOR/DME R-021 to TOMBS INT/FHU 12.76 DME. Continue climb in TOMBS holding pattern (hold north, left turns, 201° inbound) to 9500 before proceeding on course.

TAKEOFF OBSTACLE NOTES: **Rwy 3**, trees 253' from DER, 130' left of centerline, 10' AGL/4595' MSL. Tree 199' from DER, 271' right of centerline, 10' AGL/4595' MSL. **Rwy 8**, reflector, 121' from DER, 174' right of centerline, 4' AGL/4603' MSL. **Rwy 12**, terrain beginning 22' from DER, 93' right of centerline, up to 4639' MSL. **Rwy 26**, general utility 100' from DER, 173' right of centerline, 20' AGL/4723' MSL. General utility 101' from DER, 175' left of centerline, 26' AGL/4730' MSL.

DIVERSE VECTOR AREA (RADAR VECTORS) ORIG 14317 (FAA)

Rwys 3,12, heading as assigned by ATC. **Rwy 8**, heading as assigned by ATC. Requires minimum climb of 300' per NM to 8600. **Rwy 26**, heading as assigned by ATC. Requires minimum climb of 330' per NM to 8100. **Rwy 30**, heading as assigned by ATC. Requires minimum climb of 330' per NM to 8700.

GLENDALE, AZ

GLENDALE MUNI (GEU)

TAKEOFF MINIMUMS AND (OBSTACLE)
DEPARTURE PROCEDURES
AMDT 2 18144 (FAA)

DEPARTURE PROCEDURE: Use DRAKE (RNAV)
DEPARTURE.

TAKEOFF OBSTACLE NOTES: **Rwy 1**, light on blast fence 4' from DER, 130' left of centerline, up to 10' AGL/1,088' MSL. Trees beginning 124' from DER, left and right of centerline, up to 30' AGL/1,104' MSL. Vehicles beginning 299' from DER, 80' right of centerline, up to 15' AGL/1,091' MSL. Poles and trees beginning 400' from DER, 197' right of centerline, up to 75' AGL/1,144' MSL. **Rwy 19**, trees beginning 281' from DER, 331' left of centerline, up to 33' AGL/1,060' MSL.

GLOBE, AZ

SAN CARLOS APACHE (P13)

TAKEOFF MINIMUMS AND (OBSTACLE)
DEPARTURE PROCEDURES
AMDT 2 08101 (FAA)

DEPARTURE PROCEDURE: Use IZTIR DEPARTURE.

TAKEOFF MINIMUMS, (OBSTACLE) DEPARTURE PROCEDURES, AND DIVERSE VECTOR AREA (RADAR VECTORS)

20030

SW-4

TAKEOFF MINIMUMS, (OBSTACLE) DEPARTURE PROCEDURES, AND DIVERSE VECTOR AREA (RADAR VECTORS)

20030

GOODYEAR, AZ

PHOENIX GOODYEAR (GYR)
TAKEOFF MINIMUMS AND (OBSTACLE)
DEPARTURE PROCEDURES

AMDT 2 18144 (FAA)

DEPARTURE PROCEDURE: Use POTER (RNAV)
DEPARTURE.

TAKEOFF OBSTACLE NOTES: **Rwy 3**, poles beginning 159' from DER, 267' right of centerline, up to 47' AGL/1,015' MSL. Building 1512' from DER, 828' right of centerline, 48' AGL/1,014' MSL. Tree 1,957' from DER, 551' right of centerline, up to 49' AGL/1,019' MSL. **Rwy 21**, transmission tower 2610' from DER, 1,078' left of centerline, 125' AGL/1,047' MSL. Transmission tower 3,190' from DER, 311' left of centerline, 112' AGL/1,031' MSL. Pole 3,193' from DER, 308' left of centerline, 112' AGL/1,030' MSL.

DIVERSE VECTOR AREA (RADAR VECTORS)

AMDT 1 16203 (FAA)

Rwy 3, 21, heading as assigned by ATC.

GRAND CANYON, AZ

GRAND CANYON NATIONAL PARK (GCN)
TAKEOFF MINIMUMS AND (OBSTACLE)
DEPARTURE PROCEDURES

ORIG 07242 (FAA)

TAKEOFF MINIMUMS: **Rwy 3**, NA-environmental.
DEPARTURE PROCEDURE: **Rwy 21**, use GRAND
DEPARTURE.

VALLE (40G)

TAKEOFF MINIMUMS AND (OBSTACLE)
DEPARTURE PROCEDURES

ORIG 14621 (FAA)

DEPARTURE PROCEDURE: **Rwy 1**, Climb on a
heading between 188° CW to 091° from DER. **Rwy 19**,
climb on a heading between 170° CW to 008° from
DER.

HAWTHORNE, NV

HAWTHORNE INDUSTRIAL (HTH)
TAKEOFF MINIMUMS AND (OBSTACLE)
DEPARTURE PROCEDURES

ORIG 17257

TAKEOFF MINIMUMS: **Rwy 15, 33**, NA – ATC. **Rwy
10, 28**, 4200 - 3 for VCOA.

VCOA: **Rwy 10, 28**, obtain ATC approval for VCOA
when requesting IFR clearance. climb in visual
conditions to cross Hawthorne Industrial airport at or
above 8300 then climb to 11500 on MVA R-251 to
MVA VORTAC before proceeding on course.

TAKEOFF OBSTACLE NOTES: **Rwy 10**, ground
beginning at DER, 53' right of centerline, up to 4232'
MSL. Ground 139' from DER, 39' right of centerline,
4234' MSL. Ground 145' from DER, 387' right of
centerline, 4236' MSL. Bush 193' from DER, 480' right
of centerline, 2' AGL/4238' MSL. Bush 363' from DER,
576' right of centerline, 3' AGL/4242' MSL. Bush 557'
from DER, 555' right of centerline, 1' AGL/4245' MSL.
Rwy 28, ground 1' from DER, 388' left of centerline,
4183' MSL. Bush 10' from DER, 488' left of centerline,
2' AGL/4185' MSL.

HEBER, UT

HEBER VALLEY (HCR)
TAKEOFF MINIMUMS AND (OBSTACLE)
DEPARTURE PROCEDURES

AMDT 4A 19227 (FAA)

TAKEOFF MINIMUMS: **Rwys 4, 22**, 5800-5 for VCOA.
VCOA NA at night.

VCOA: **Rwys 4, 22**, obtain ATC approval for VCOA when
requesting IFR clearance. Climb in visual conditions to
cross Heber Valley airport at or above 11300 before
proceeding on course.

TAKEOFF OBSTACLE NOTES: **Rwy 4**, fence abeam
DER, 301' left of centerline, 16' AGL/5647' MSL. Pole 24'
from DER, 404' left of centerline, up to 33' AGL/5659'
MSL. Bush 23' from DER, 61' left of centerline, up to
5639' MSL. Terrain 109' from DER, 428' right of
centerline, 5642' MSL. Multiple poles, tree, beginning
200' from DER, 269' left of centerline, up to 36'
AGL/5666' MSL. Tree, fence beginning 252' from DER,
249' right of centerline, up to 5659' MSL. Pole 319' from
DER, 404' left of centerline, up to 5670' MSL. Tree, pole
beginning 662' from DER, 404' left of centerline, up to
5681' MSL. Tree, sign, pole beginning 710' from DER,
281' left of centerline, up to 5682' MSL. Building
beginning 1066' from DER, 42' right of centerline, up to
5674' MSL. Tree, pole beginning 1120' from DER, 181'
right of centerline, up to 5689' MSL. Tree, pole beginning
1281' from DER, 278' right of centerline, up to 5690' MSL.
Trees beginning 1773' from DER, 238' left of centerline,
up to 5689' MSL. Tree, pole beginning 1901' from DER,
399' right of centerline, up to 5708' MSL. Tree 1909' from
DER, 498' left of centerline, 5692' MSL. **Rwy 22**, pole
abeam DER, 292' right of centerline, 16' AGL/5592' MSL.
Fence, vegetation, terrain 13' from DER, 225' left of
centerline, up to 9' AGL/5597' MSL. Trees beginning 608'
from DER, 384' right of centerline, up to 5611' MSL. Pole
829' from DER, 474' left of centerline, 22' AGL/5605'
MSL. Pole 988' from DER, 634' left of centerline, up to 33'
AGL/5617' MSL. Tree 1672' from DER, 777' left of
centerline, 5628' MSL. Terrain beginning 1.1 NM from
DER, 1752' left of centerline, up to 5964' MSL. Tree 1.3
NM from DER, 2420' left of centerline, 5821' MSL.
Terrain, trees beginning 1.4 NM from DER, 1124' left of
centerline, up to 6128' MSL. Terrain, trees beginning 1.5
NM from DER, 372' left of centerline, up to 6411' MSL.

HILL AFB (KH)

OGDEN, UT
TAKEOFF MINIMUMS AND (OBSTACLE)
DEPARTURE PROCEDURES

Diverse departures not authorized, use radar
vectors or published Departure Procedures (DP) for
obstacle avoidance.

HUNTINGTON, UT

HUNTINGTON MUNI (69V)
TAKEOFF MINIMUMS AND (OBSTACLE)
DEPARTURE PROCEDURES

AMDT 2B 18200 (FAA)

TAKEOFF MINIMUMS: **Rwys 12, 18, 26, 30, 36**, NA-
Environmental.

DEPARTURE PROCEDURE: **Rwy 8**, climbing left turn
direct PUC VOR/DME... ..continue climb in PUC VOR/
DME holding pattern (hold south, RT, 009° inbound) to
MEA for direction of flight.

TAKEOFF OBSTACLE NOTES: **Rwy 8**, tree 2663' from
DER, 922' left of centerline, 40' AGL/5979' MSL.

TAKEOFF MINIMUMS, (OBSTACLE) DEPARTURE PROCEDURES, AND DIVERSE VECTOR AREA (RADAR VECTORS)

20030

SW-4

30 JAN 2020 to 27 FEB 2020

30 JAN 2020 to 27 FEB 2020

TAKEOFF MINIMUMS, (OBSTACLE) DEPARTURE PROCEDURES, AND DIVERSE VECTOR AREA (RADAR VECTORS)

20030

KANAB, UT

KANAB MUNI (KNB)

TAKEOFF MINIMUMS AND (OBSTACLE)
DEPARTURE PROCEDURES
AMDT 3 10042 (FAA)

TAKEOFF MINIMUMS: **Rwy 1**, std. with min. climb of 742' per NM to 6600, or 1100-3 with min. climb of 535' per NM to 6900, or 2400-3 for climb in visual conditions.

DEPARTURE PROCEDURE: **Rwy 19**, climb heading 171° to 6800 before turning. **Rwy 1**, climb heading 006° to 6100 before turning, or for climb in visual conditions, cross Kanab Muni airport at or above 7100 before proceeding on course.

TAKEOFF OBSTACLE NOTES: **Rwy 1**, vent on building 554' from DER, 370' left of centerline, 16' AGL/4884' MSL. Trees beginning 1138' from DER, 302' left of centerline, up to 100' AGL/5939' MSL. Rising terrain and trees beginning 1.68 NM from DER, 247' right of centerline, up to 100' AGL/5239' MSL. Rising terrain and trees beginning 1.76 NM from DER, 766' left of centerline, up to 100' AGL/5599' MSL. Rising terrain beginning 3.5 NM from DER, left and right of centerline, up to 6359' MSL. **Rwy 19**, trees beginning 271' from DER, 506' right of centerline, up to 100' AGL/4899' MSL.

KINGMAN, AZ

KINGMAN (IGM)

TAKEOFF MINIMUMS AND (OBSTACLE)
DEPARTURE PROCEDURES

TAKEOFF MINIMUMS: **Rwys 3,17,21,35**, 800-1 or std. with a min. climb of 210' per NM to 7000.

DEPARTURE PROCEDURE: Climb northbound on IGM R-010 until reaching 6000; reverse course to the left and continue climb to 9000 direct to IGM. If unable to cross IGM at 9000 continue climb in IGM holding pattern (SW, left turns, 027° inbound).

LAGUNA AAF (LGF)

YUMA PROVING GROUND, AZ (03247)

Rwy 6, 18, 36, turn right, climb to 3600 direct BZA VORTAC.

Rwy 24, climb to 3600 direct to BZA VORTAC.
TAKEOFF OBSTACLE NOTES: **Rwy 18**, 386' (6' AGL) windsock, 818' from DER, 194' left of centerline.

LAKE HAVASU CITY, AZ

LAKE HAVASU CITY (HII)

TAKEOFF MINIMUMS AND (OBSTACLE)
DEPARTURE PROCEDURES
AMDT 2 12152 (FAA)

TAKEOFF MINIMUMS: **Rwy 14**, std. w/min. climb of 465' per NM to 4800, or 1500-3 for climb in visual conditions. **Rwy 32**, 600-1% w/min. climb of 492' per NM to 1100, or 1500-3 for climb in visual conditions.

DEPARTURE PROCEDURE: **Rwy 14**, climbing right turn heading 300° to intercept EED VORTAC R-155 to EED VORTAC, continue climb in EED VORTAC holding pattern (East, right turns, 257° inbound) to cross EED VORTAC at or above 6100 before proceeding on course or...

Rwy 32, climbing left turn heading 290° to intercept EED VORTAC R-155 to EED VORTAC, continue climb in EED VORTAC holding pattern (East, right turns, 257° inbound) to cross EED VORTAC at or above 6100 before proceeding on course or...

Rwys 14, 32, ... For climb in visual conditions: cross Lake Havasu City airport northwest bound at or above 2300, then Intercept EED VORTAC R-138 to EED VORTAC, continue climb in EED VORTAC holding pattern (East, right turns, 257° inbound) to cross EED VORTAC at or above 6100 before proceeding on course. When executing VCOA, notify ATC prior to departure.

TAKEOFF OBSTACLE NOTES: **Rwy 14**, pole 3327' from DER, 46' right of centerline, 107' AGL/868' MSL. Poles 3468' from DER, 195' left of centerline, up to 107' AGL/890' MSL. Trees/bushes 976' from DER, 380' left of centerline, up to 46' AGL/829' MSL. Terrain 143' from DER, 346' left of centerline, up to 804' MSL. **Rwy 32**, trees 1544' from DER, 416' right of centerline, up to 44' AGL/793' MSL.

LAS VEGAS, NV

HENDERSON EXECUTIVE (HND)

TAKEOFF MINIMUMS AND (OBSTACLE)
DEPARTURE PROCEDURES
AMDT 1 17173 (FAA)

TAKEOFF MINIMUMS: **Rwys 17L/R**, standard with minimum climb of 491' per NM to 6000 or 2800-2% for VCOA. **Rwys 35L/R**, standard with minimum climb of 312' per NM to 4700 or 2800-2% for VCOA.

DEPARTURE PROCEDURE: **Rwys 17L/R**, climbing right turn on LAS R-157 to LAS VORTAC before proceeding on course. **Rwys 35 L/R**, climbing right turn on BLD R-257 to BLD VORTAC before proceeding on course. VCOA: **All Runways**, obtain ATC approval for VCOA when requesting IFR clearance. Climb in visual conditions to cross Henderson Executive airport eastbound at or above 5100, then proceed on BLD R-249 TO BLD VORTAC before proceeding on course.

TAKEOFF OBSTACLE NOTES: **Rwy 17L**, terrain beginning 2427' from DER, 18' left of centerline, 2552' MSL. Poles beginning 4256' from DER, 678' right of centerline, up to 2598' MSL. **Rwy 17R**, bush 134' from DER, 314' right of centerline, 2498' MSL. Fence 629' from DER, 75' right of centerline, 2510' MSL. Terrain 928' from DER, 717' left of centerline, 2552' MSL. Tank 1096' from DER, 311' right of centerline, 2533' MSL. Vehicles on road beginning 1149' from DER, crossing centerline, up to 1159' MSL. Poles beginning 2756' from DER, from 400' left to 698' right of centerline, up to 2764' MSL.

30 JAN 2020 to 27 FEB 2020

30 JAN 2020 to 27 FEB 2020

TAKEOFF MINIMUMS, (OBSTACLE) DEPARTURE PROCEDURES, AND DIVERSE VECTOR AREA (RADAR VECTORS)

20030

SW-4

**TAKEOFF MINIMUMS, (OBSTACLE) DEPARTURE PROCEDURES, AND
DIVERSE VECTOR AREA (RADAR VECTORS)**

LAS VEGAS, NV (CON'T)

MCCARRAN INTL (LAS)

TAKEOFF MINIMUMS AND (OBSTACLE)

DEPARTURE PROCEDURES

AMDT 8 17229 (FAA)

TAKEOFF MINIMUMS: **Rwy 1L**, 300-1 or std. w/min. climb of 269' per NM to 2300. **Rwy 19L**, std. w/min. climb of 256' per NM to 3400. **Rwy 19R**, std. w/min. climb of 242' per NM to 3400. **Rwy 26L**, 300-2¼ or std. w/min. climb of 214' per NM to 2400. **Rwy 26R**, 400-2½ or std. w/min. climb of 270' per NM to 2400.

DEPARTURE PROCEDURE: **Rwys 1L/R**, Climb right turn direct BLD VORTAC before proceeding on course.

Rwys 8L/R, Climb heading 079° to 3700, then climbing right turn direct BLD VORTAC before proceeding on course. **Rwys 19L/R**, Climb heading 194° to 2800, then climbing left turn heading 120° and BLD R-257 to BLD VORTAC before proceeding on course. **Rwys 26L/R**, Climb heading 259° to 2800, then climbing right turn direct BLD VORTAC before proceeding on course.

TAKEOFF OBSTACLE NOTES: **Rwy 1L**, REIL 23' from DER, 153' left of centerline, 3' AGL/2090' MSL. Sign 1037' from DER, 695' left of centerline, 41' AGL/2125' MSL. Building 1556' from DER, 552' left of centerline, 2129' MSL. Building 1779' from DER, 649' left of centerline, 2147' MSL. Buildings beginning 1907' from DER, 186' left of centerline, up to 2150' MSL. Buildings beginning 1977' from DER, 214' left of centerline, up to 2150' MSL. Buildings beginning 2095' from DER, 275' left of centerline, up to 83' AGL/2153' MSL. Buildings beginning 3953' from DER, 1397' left of centerline, up to 162' AGL/2226' MSL. Building 4126' from DER, 1090' left of centerline, 2229' MSL. Building 4542' from DER, 1400' left of centerline, 183' AGL/2240' MSL. Building 4604' from DER, 1367' left of centerline, 186' AGL/2243' MSL. **Rwy 1R**, building 609' from DER, 538' right of centerline, 28' AGL/2095' MSL. Sign 1336 from DER, 447' right of centerline, 60' AGL/2122' MSL. **Rwy 8L**, pole 744' from DER, 442' right of centerline, 30' AGL/2057' MSL. Tree 758' from DER, 168' right of centerline, 2068' MSL. Tree 767' from DER, 589' left of centerline, 2060' MSL. Tree 850' from DER, 184' left of centerline, 2067' MSL. Trees beginning 886' from DER, 371' right of centerline, up to 2074' MSL. **Rwy 8R**, tower 1457' from DER, 848' right of centerline, 64' AGL/2097' MSL. **Rwy 19L**, railroad, pole beginning 952' from DER, 322' left of centerline, up to 2215' MSL. Railroad 1043' from DER, 178' left of centerline, 2218' MSL. Railroad, pole beginning 1122' from DER, 19' left of centerline, up to 2219' MSL. Railroad 1166' from DER, 75' right of centerline, 2220' MSL. Railroad 1219' from DER, 235' right of centerline, 2222' MSL. Railroad 1230' from DER, 281' right of centerline, 2223' MSL. Pole 1234' from DER, 178' left of centerline, 2221' MSL. Railroad 1241' from DER, 351' right of centerline, 2224' MSL. Railroad 1246' from DER, 489' right of centerline, 2225' MSL. Railroad, pole beginning 1247' from DER, 11' right of centerline, up to 2226' MSL. Poles, tree, vehicles on road, sign, parking lot beginning 1392' from DER, 115' right of centerline, up to 36' AGL/2238' MSL. Tree, pole beginning 1410' from DER, 9' left of centerline, up to 2232' MSL. Tree 1819' from DER, 124' left of centerline, 2236' MSL. Pole, tree, vehicles on road beginning 1824' from DER, 9' right of centerline, up to 34' AGL/2242' MSL. Pole 1933' from DER, 623' right of centerline, 34' AGL/2243' MSL. Pole, tree beginning 1936' from DER, 55' right of centerline, up to 36' AGL/2245' MSL.

LAS VEGAS, NV (CON'T)

MCCARRAN INTL (LAS) (CON'T)

Rwy 19L (CON'T), Pole, tree, parking lot beginning 2036' from DER, 386' right of centerline, up to 35' AGL/2246' MSL. Pole, parking lot, tree, vehicles on road beginning 2133' from DER, 183' right of centerline, up to 36' AGL/2247' MSL. Sign, tree, parking lot, vehicles on road, pole, building beginning 2179' from DER, 27' right of centerline, up to 2256' MSL. Pole 2229' from DER, 578' left of centerline, 2238' MSL. Poles beginning 2332' from DER, 583' left of centerline, up to 2240' MSL. Sign, tree, pole, parking lot, building beginning 2381' from DER, 53' right of centerline, up to 41' AGL/2257' MSL. Building, tree, pole beginning 2466' from DER, 591' right of centerline, up to 38' AGL/2258' MSL. Building, tree, poles, utility box beginning 2505' from DER, 157' right of centerline, up to 38' AGL/2259' MSL. Pole, building beginning 2738' from DER, 20' left of centerline, up to 2251' MSL. Building, tree beginning 2739' from DER, 1134' right of centerline, up to 57' AGL/2279' MSL. Building, tree beginning 2766' from DER, 869' right of centerline, up to 57' AGL/2280' MSL. Building, tree beginning 2822' from DER, 1006' right of centerline, up to 58' AGL/2281' MSL. Buildings, tree, poles beginning 2861' from DER, 665' right of centerline, up to 59' AGL/2282' MSL. Buildings, pole beginning 3418' from DER, 884' right of centerline, up to 61' AGL/2284' MSL. Building, pole beginning 3515' from DER, 424' right of centerline, up to 59' AGL/2287' MSL. Sign 5292' from DER, 1688' right of centerline, 55' AGL/2309' MSL. Building, pole beginning 5596' from DER, 1758' left of centerline, up to 110' AGL/2334' MSL. Communication tower 5717' from DER, 781' right of centerline, 80' AGL/2327' MSL. Building 2 nm from DER, 2897' left of centerline, 236' AGL/2491' MSL. Buildings beginning 2 nm from DER, 2936' left of centerline, up to 241' AGL/2494' MSL. **Rwy 19R**, ground 60' from DER, 475' right of centerline, 2186' MSL. Ground 151' from DER, 529' right of centerline, 2190' MSL. Building 194' from DER, 444' right of centerline, 9' AGL/2199' MSL. NAV/AID 262' from DER, 408' right of centerline, 14' AGL/2206' MSL. Vehicles on road, ground, control box beginning 348' from DER, 42' right of centerline, up to 2208' MSL. Pole, vehicles on road beginning 503' from DER, 434' right of centerline, up to 2218' MSL. Pole, sign, vehicles on road, flag pole, fence beginning 592' from DER, 277' right of centerline, up to 37' AGL/2234' MSL. Signs, parking lot, vehicles on road, building, pole, tree beginning 844' from DER, 266' right of centerline, up to 41' AGL/2240' MSL. Tower, fence, vehicles on road, sign beginning 961' from DER, 175' right of centerline, up to 41' AGL/2243' MSL. T-L tower, vehicles on road, railroad, pole, railroad crossing signal control box, parking lot beginning 1132' from DER, 8' right of centerline, up to 47' AGL/2249' MSL. Railroad 1219' from DER, 701' left of centerline, 2222' MSL. Railroad 1230' from DER, 656' left of centerline, 2223' MSL. Railroad 1240' from DER, 585' left of centerline, 2224' MSL. Railroad 1246' from DER, 448' left of centerline, 2225' MSL. Railroad, pole beginning 1247' from DER, 76' left of centerline, up to 2226' MSL. Poles, tree, vehicles on road, sign beginning 1392' from DER, 15' left of centerline, up to 36' AGL/2238' MSL. Poles, tree, parking lot, building beginning 1726' from DER, 11' right of centerline, up to 2254' MSL. Pole, tree beginning 1823' from DER, 78' left of centerline, up to 34' AGL/2242' MSL. Pole 1933' from DER, 313' left of centerline, 34' AGL/2243' MSL. Pole, tree beginning 1935' from DER, 12' left of centerline, up to 36' AGL/2245' MSL. **CON'T**

30 JAN 2020 to 27 FEB 2020

30 JAN 2020 to 27 FEB 2020

**TAKEOFF MINIMUMS, (OBSTACLE) DEPARTURE PROCEDURES, AND
DIVERSE VECTOR AREA (RADAR VECTORS)**

TAKEOFF MINIMUMS, (OBSTACLE) DEPARTURE PROCEDURES, AND DIVERSE VECTOR AREA (RADAR VECTORS)

LAS VEGAS, NV (CON'T)

MCCARRAN INTL (LAS) (CON'T)

Rwy 19R (CON'T), pole, tree beginning 2036' from DER, 5' left of centerline, up to 35' AGL/2246' MSL. Poles, building, tree beginning 2043' from DER, 221' right of centerline, up to 2255' MSL. Pole, tree beginning 2133' from DER, 19' left of centerline, up to 36' AGL/2247' MSL. Tree, poles, sign, building beginning 2146' from DER, 14' right of centerline, up to 2259' MSL. Pole, building, tree beginning 2234' from DER, 12' left of centerline, up to 35' AGL/2249' MSL. Pole, tree beginning 2335' from DER, 88' left of centerline, up to 36' AGL/2250' MSL. Sign, tree, poles, building beginning 2381' from DER, 37' left of centerline, up to 41' AGL/2257' MSL. Pole, buildings, tree beginning 2496' from DER, 5' right of centerline, up to 2274' MSL. Building beginning 2739' from DER, 196' right of centerline, up to 57' AGL/2279' MSL. Building, tree beginning 2766' from DER, 73' right of centerline, up to 57' AGL/2280' MSL. Building beginning 2767' from DER, 44' left of centerline, up to 36' AGL/2258' MSL. Building, tree beginning 2822' from DER, 68' right of centerline, up to 58' AGL/2281' MSL. Building, tree beginning 2861' from DER, 126' right of centerline, up to 59' AGL/2282' MSL. Buildings, tree beginning 2893' from DER, 6' right of centerline, up to 2288' MSL. Building beginning 2895' from DER, 2' left of centerline, up to 39' AGL/2262' MSL. Buildings, tree building beginning 3032' from DER, 301' right of centerline, up to 61' AGL/2290' MSL. Buildings, tree, pole beginning 3076' from DER, 58' right of centerline, up to 61' AGL/2291' MSL. Buildings, sign, poles beginning 3459' from DER, 287' right of centerline, up to 74' AGL/2302' MSL. Building 3495' from DER, 53' left of centerline, 52' AGL/2278' MSL. Communication tower 5717' from DER, 156' left of centerline, 80' AGL/2327' MSL. **Rwy 26L**, building 1002' from DER, 250' left of centerline, 6' AGL/2183' MSL. Railroad, pole beginning 1857' from DER, 793' left of centerline, up to 2215' MSL. Railroad 2068' from DER, 796' left of centerline, 2218' MSL. Pole, railroad beginning 2148' from DER, 800' left of centerline, up to 2221' MSL. Tree, railroad beginning 2376' from DER, 780' left of centerline, up to 2232' MSL. Tree, railroad beginning 2528' from DER, 751' left of centerline, up to 2233' MSL. Pole 2861' from DER, 811' left of centerline, 36' AGL/2238' MSL. Pole 3167' from DER, 1144' left of centerline, 34' AGL/2242' MSL. Pole 3171' from DER, 1091' left of centerline, 34' AGL/2243' MSL. Pole 3313' from DER, 1200' left of centerline, 35' AGL/2246' MSL. Sign, T-L tower beginning 3672' from DER, 145' left of centerline, up to 2256' MSL. Pole, building beginning 4223' from DER, 1389' left of centerline, up to 2274' MSL. Building 4554' from DER, 1593' left of centerline, 2277' MSL. Building 4687' from DER, 1685' left of centerline, 53' AGL/2279' MSL. Building 4719' from DER, 1754' left of centerline, 61' AGL/2290' MSL. Building 4954' from DER, 1694' left of centerline, 61' AGL/2291' MSL. Transmission tower 5469' from DER, 1056' left of centerline, 2297' MSL. Pole 5879' from DER, 1519' left of centerline, 2309' MSL. Pole 6019' from DER, 2022' right of centerline, 101' AGL/2309' MSL. Pole 1 NM from DER, 1720' left of centerline, 46' AGL/2311' MSL. Pole 1 NM from DER, 1922' left of centerline, 45' AGL/2311' MSL. Tower 1.1 NM from DER, 1843' left of centerline, 80' AGL/2332' MSL. Pole 1.8 NM from DER, 1817' left of centerline, 131' AGL/2435' MSL.

LAS VEGAS, NV (CON'T)

MCCARRAN INTL (LAS) (CON'T)

Rwy 26R, NAVAIDs, building beginning 533' from DER, 367' left of centerline, up to 14' AGL/2206' MSL. NAVAIDs beginning 533' from DER, on centerline, up to 5' AGL/2195' MSL. Vehicles on road beginning 666' from DER, crossing left and right of centerline, up to 2208' MSL. Pole 785' from DER, 592' left of centerline, 2218' MSL. Pole, tree beginning 786' from DER, 8' left of centerline, up to 2220' MSL. Trees beginning 821' from DER, 49' right of centerline, up to 25' AGL/2214' MSL. Pole, sign, tree, building beginning 873' from DER, 347' left of centerline, up to 37' AGL/2234' MSL. Trees beginning 952' from DER, 48' right of centerline, up to 2233' MSL. Pole, tree, railroad beginning 1093' from DER, 531' left of centerline, up to 38' AGL/2237' MSL. Trees beginning 1559' from DER, 555' right of centerline, up to 2259' MSL. Tree, building, railroad beginning 1812' from DER, 191' left of centerline, up to 2246' MSL. Building 2501' from DER, 881' left of centerline, 2254' MSL. Poles beginning 3002' from DER, 543' left of centerline, up to 44' AGL/2271' MSL. Poles beginning 3005' from DER, 743' left of centerline, up to 48' AGL/2277' MSL. Pole 3116' from DER, 1022' right of centerline, 101' AGL/2309' MSL. Sign 3339' from DER, 278' left of centerline, up to 2286' MSL. Communication tower 4521' from DER, 704' right of centerline, 2332' MSL. Sign 1.3 NM from DER, 2649' left of centerline, 80' AGL/2384' MSL. Pole 1.5 NM from DER, 2801' left of centerline, 100' AGL/2444' MSL. Pole 1.6 NM from DER, 2832' left of centerline, up to 100' AGL/2455' MSL. Pole, communication tower beginning 1.7 NM from DER, 2068' left of centerline, up to 100' AGL/2463' MSL. Pole 1.7 NM from DER, 2845' left of centerline, 135' AGL/2469' MSL. Transmission tower 2.1 NM from DER, 3453' left of centerline, 134' AGL/2490' MSL.

NORTH LAS VEGAS (VGT)

TAKEOFF MINIMUMS AND (OBSTACLE) DEPARTURE PROCEDURES

AMDT 3A 18312 (FAA)

DEPARTURE PROCEDURE: Use BOULDER CITY DEPARTURE.

TAKEOFF OBSTACLE NOTES: **Rwy 7**, tower 1.1 NM from DER, 1044' right of centerline, 252' AGL/2348' MSL. **Rwy 12R**, multiple towers 1.0 NM from DER, 850' right of centerline, up to 267' AGL/2368' MSL. Tower 1.2 NM from DER, 1355' right of centerline, 270' AGL/2367' MSL. Power lines 1122' from DER, 764' right of centerline, traversing to the southeast out to 2345' from DER, 510' right of centerline, 106' AGL/2344' MSL. **Rwy 12L**, light pole 254' from DER, 462' right of centerline, 36' AGL/2159' MSL. Trucks on road 255' from DER, 502' right of centerline, 15' AGL/2155' MSL. Power line 1289' from DER, 663' right of centerline traversing to the Northeast out to 1576' from DER, 716' left of centerline, up to 129' AGL/2226' MSL. Multiple towers 5045' from DER, 1551' right of centerline, 267' AGL/2368' MSL. **Rwy 25**, light pole, 1447' from DER, 21' right of centerline, 35' AGL/2255' MSL. **Rwy 30L**, signs, building, light pole beginning 1692' from DER, 236' left of centerline, up to 49' AGL/2271' MSL. Multiple trees beginning 1785' from DER, 78' right of centerline, up to 57' AGL/2296' MSL. Tree, multiple towers/antennas beginning 2745' from DER, 511' left of centerline, up to 84' AGL/2397' MSL. **Rwy 30R**, antenna tower 4639' from DER, 1736' left of centerline, 84' AGL/2327' MSL. Anemometer 552' from DER, 570' left of centerline, 34' AGL/2216' MSL. Vent on building 1632' from DER, 566' right of centerline, 58' AGL/2240' MSL. Antenna on hanger 2012' from DER, 195' right of centerline, 61' AGL/2247' MSL.

TAKEOFF MINIMUMS, (OBSTACLE) DEPARTURE PROCEDURES, AND DIVERSE VECTOR AREA (RADAR VECTORS)

TAKEOFF MINIMUMS, (OBSTACLE) DEPARTURE PROCEDURES, AND DIVERSE VECTOR AREA (RADAR VECTORS)

20030

LOGAN, UT

LOGAN-CACHE (LGU)

TAKEOFF MINIMUMS AND (OBSTACLE)
DEPARTURE PROCEDURES
AMDT 8 09351 (FAA)

TAKEOFF MINIMUMS: **Rwys 10, 28**, NA-obstacles.
DEPARTURE PROCEDURE: **Rwys 17, 35**, use
ORNEY DEPARTMENT.

LOVELOCK, NV

DERBY FIELD (LOL)

TAKEOFF MINIMUMS AND (OBSTACLE)
DEPARTURE PROCEDURES
AMDT 1 19003 (FAA)

TAKEOFF MINIMUMS: **Rwy 2**, std. w/min. climb of 415'
per NM to 8200 or 3200-3 for climb in visual conditions.
Rwys 8, 20, std. w/min. climb of 340' per NM to 8200
or 3200-3 for climb in visual conditions. **Rwy 26**, std. w/
min. climb of 400' per NM to 8200 or 3200-3 for climb
in visual conditions.

DEPARTURE PROCEDURE: **Rwy 2**, climb to 6500 then
climbing left turn direct LLC VORTAC, thence... **Rwys**
8, 20, 26, climb to 5700 then climbing left turn direct
LLC VORTAC, thence...

...Climb in LLC VORTAC holding pattern (north, left turn,
169° inbound) to depart LLC VORTAC at or above
8800, continue climb on course to MEA or assigned
altitude.

VCOA: Obtain ATC approval for VCOA when requesting
IFR clearance. Climb in visual conditions to cross
Derby Field Airport at or above 7000 before proceeding
on course.

TAKEOFF OBSTACLE NOTES: **Rwy 2**, vegetation 13'
from DER, 141' right of centerline, 3908' MSL. Sign 17'
from DER, 199' left of centerline, 2' AGL/3909' MSL.
Vegetation 54' from DER, 155' right of centerline, 3909'
MSL. Tree 80' from DER, 347' right of centerline, 3912'
MSL. **Rwy 8**, vegetation beginning 56' from DER, 172'
left of centerline, up to 3910' MSL. Vegetation 147'
from DER, 376' left of centerline, 3911' MSL. **Rwy 20**,
vegetation beginning 47' from DER, 112' left of
centerline, up to 3910' MSL. **Rwy 26**, terrain 15' from
DER, 170' right of centerline, 3905' MSL. Vegetation
67' from DER, 239' left of centerline, 3906' MSL. Tree
258' from DER, 531' left of centerline, 3917' MSL

LUKE AFB (KLUF),

GLENDALE, AZ

TAKEOFF MINIMUMS AND (OBSTACLE)
DEPARTURE PROCEDURES
AMDT 4 14009

DEPARTURE PROCEDURE: **Rwy 3L, 3R**, Climb
heading 030° to LUF 4 DME, then climbing left turn on
a heading between 320° CW to 360° from DER.
Expect RADAR vectors on course from Luke
RAPCON. **Rwy 21L, 21R**, Climb heading 210° to LUF
8 DME, then climb on a heading between 180° CW to
222° from DER. Expect RADAR vectors on course
from Luke RAPCON.

TAKEOFF OBSTACLE NOTES: **Rwy 3L**, Taxiing
aircraft, 19' AGL/1123' MSL, 1221' from DER, 782' left
of centerline. Taxiing aircraft, 19' AGL/1123' MSL,
1407' from DER, 609' left of centerline. **Rwy 21L**,
Taxiing aircraft, 38' AGL/1117' MSL, 1428' from DER,
774' left of centerline.

MANTI, UT

MANTI-EPHRAIM (41U)

TAKEOFF MINIMUMS AND (OBSTACLE)
DEPARTURE PROCEDURES
ORIG 17173 (FAA)

DEPARTURE PROCEDURE: **Rwy 3**, Use YMONT
DEPARTURE. **Rwy 21**, Use WUXOT DEPARTURE.

MARANA, AZ

MARANA RGNL(AVQ)

TAKEOFF MINIMUMS AND (OBSTACLE)
DEPARTURE PROCEDURES
ORIG-A 13234 (FAA)

TAKEOFF MINIMUMS: **Rwys 3, 12**, N/A-Obstacles
DEPARTURE PROCEDURE: **Rwy 21**, climb to 6500 via
heading 360° and TUS R-308 to TOTEC INT/TUS 57
DME, then as filed. **Rwy 30**, climb to 6500 via heading
303° intercept TUS R-308 above 3500, to TOTEC INT/
TUS 57 DME, then as filed.

TAKEOFF OBSTACLE NOTES: **Rwy 21**, road 53' from
DER, 413' left of centerline, 15' AGL/2035' MSL. Tree
800' from DER, 695' left of centerline, 32' AGL/2043'
MSL. Multiple trees and poles beginning 518' from DER,
190' right of centerline, up to 38' AGL/2049' MSL. **Rwy**
30, multiple trees beginning 148' from DER, 275' right of
centerline, up to 19' AGL/2020' MSL.

MESA, AZ

FALCON FIELD (FFZ)

TAKEOFF MINIMUMS AND (OBSTACLE)
DEPARTURE PROCEDURES
AMDT 4 10210 (FAA)

DEPARTURE PROCEDURE: use MESA DEPARTMENT.

DIVERSE VECTOR AREA (RADAR VECTORS)

AMDT 1 16007 (FAA)

Rwy 4L, Heading as assigned by ATC; requires
minimum climb of 480' per NM to 3800. **Rwy 4R**,
Heading as assigned by ATC; requires minimum climb of
500' per NM to 3700. **Rwy 22L/R**, Heading as assigned
by ATC.

30 JAN 2020 to 27 FEB 2020

30 JAN 2020 to 27 FEB 2020

TAKEOFF MINIMUMS, (OBSTACLE) DEPARTURE PROCEDURES, AND DIVERSE VECTOR AREA (RADAR VECTORS)

20030

SW-4

TAKEOFF MINIMUMS, (OBSTACLE) DEPARTURE PROCEDURES, AND DIVERSE VECTOR AREA (RADAR VECTORS)

20030

MESQUITE, NV

MESQUITE (67L)

TAKEOFF MINIMUMS AND (OBSTACLE)
DEPARTURE PROCEDURES
ORIG 18256 (FAA)

TAKEOFF MINIMUMS: **Rwy 2**, 300-2¼ or std. w/min.
climb of 455' per NM to 2300.

DEPARTURE PROCEDURE: **Rwy 2**, climb heading
018° to 2400 then climbing left turn direct MMM
VORTAC, continue climb-in hold (hold S, left turn,
015° inbound) to 11000 before proceeding on course.

Rwy 20, climbing right turn direct MMM VORTAC,
continue climb-in hold (hold S, left turn 015° inbound)
to 11000 before proceeding on course.

TAKEOFF OBSTACLE NOTES: **Rwy 2**, terrain
beginning 41' from DER, 227' left of centerline, up to
1992' MSL. Terrain beginning 83' from DER, 456' right
of centerline, up to 2000' MSL. Fence, terrain
beginning 190' from DER, 211' right of centerline, up
to 3' AGL/2005' MSL. Terrain beginning 197' from
DER, 213' left of centerline, up to 2006' MSL. Terrain
beginning 295' from DER, 222' right of centerline, up
to 2006' MSL. Terrain beginning 365' from DER, 225'
left of centerline, up to 2019' MSL. Fence beginning
491' from DER, 238' right of centerline, up to 3'
AGL/2014' MSL. Terrain 783' from DER, 496' left of
centerline, 2026' MSL. Terrain beginning 846' from
DER, 254' left of centerline, up to 2031' MSL. Terrain,
fence beginning 971' from DER, 272' left of centerline,
up to 2036' MSL. Terrain, fence beginning 1176' from
DER, 269' left of centerline, up to 2038' MSL. Terrain
beginning 1289' from DER, 411' left of centerline, up to
2043' MSL. Terrain beginning 1426' from DER, 647'
left of centerline, up to 2048' MSL. Terrain beginning
2059' from DER, 909' left of centerline, up to 2059'
MSL. Terrain 2960' from DER, 1201' left of centerline,
2065' MSL. Terrain beginning 3160' from DER, 139'
right of centerline, up to 2098' MSL. Terrain beginning
3268' from DER, 73' right of centerline, up to 2119'
MSL. Terrain beginning 3317' from DER, 334' left of
centerline, up to 2084' MSL. Terrain beginning 3424'
from DER, 674' right of centerline, up to 2139' MSL.
Terrain 3429' from DER, 459' right of centerline, 2149'
MSL. Terrain beginning 3434' from DER, 109' left of
centerline, up to 2102' MSL. Terrain 3460' from DER,
387' right of centerline, 2152' MSL. Terrain, vegetation
beginning 3484' from DER, 10' right of centerline, up
to 2156' MSL. Terrain 3794' from DER, 751' left of
centerline, 2110' MSL. Terrain beginning 3794' from
DER, 163' left of centerline, up to 2118' MSL. Terrain
beginning 3903' from DER, 952' left of centerline, up to
2122' MSL. Terrain, vegetation beginning 3911' from
DER, 119' left of centerline, up to 2199' MSL. Terrain,
vegetation beginning 4387' from DER, 10' left of
centerline, up to 2204' MSL. Terrain 1.5 NM from
DER, 2409' left of centerline, 2216' MSL. Vegetation
1.5 NM from DER, 2758' left of centerline, 2231' MSL.
Terrain beginning 1.5 NM from DER, 2618' left of
centerline, up to 2257' MSL. Terrain beginning 1.5 NM
from DER, 2769' left of centerline, up to 2259' MSL.
Terrain 1.7 NM from DER, 3138' left of centerline,
2244' MSL. **Rwy 20**, lighting 1' from DER, 46' left of
centerline, 2' AGL/1876' MSL. Lighting 3' from DER,
89' right of centerline, 2' AGL/1876' MSL. Traverse
way 4' from DER, 355' right of centerline, 1878' MSL.
Transmission line 453' from DER, 308' left of
centerline, 70' AGL/1888' MSL.

MICHAEL AAF (KDPG),

DUGWAY PROVING GROUND, UT
TAKEOFF MINIMUMS AND (OBSTACLE)
DEPARTURE PROCEDURES
AMDT 2 12236

DEPARTURE PROCEDURES: **Rwy 12**, Climb heading
122° to 5700, then climbing right turn on a heading
between 202° CW to 302° to 10,000 before proceeding
on course. **Rwy 30**, Climbing left turn on a heading
between 267° CW to 300° to 10,000 before proceeding
on course.

MILFORD, UT

MILFORD MUNI/BEN AND JUDY BRISCOE
FIELD (MLF)

TAKEOFF MINIMUMS AND (OBSTACLE)
DEPARTURE PROCEDURES

AMDT 2 12096 (FAA)

TAKEOFF MINIMUMS: **Rwy 34**, std. w/min. climb of 487'
per NM to 6500 or 1500-3 for climb in visual conditions.
DEPARTURE PROCEDURE: **Rwy 16**, climb direct MLF
VORTAC, thence ...

... Aircraft departing on V235 or V21 southbound
proceed on course.

... All other aircraft climb to 11000 on MLF VORTAC R-
168, then right turn direct MLF VORTAC. Continue climb-
in-hold, right turns, 348° inbound to cross MLF VORTAC
at or above MEA/MCA for route of flight. **Rwy 34**,
climbing left turn to intercept MLF VORTAC R-310 to
MLF VORTAC, thence...

... Aircraft departing on V235 or V21 southbound;
proceed on course.

... All other aircraft, climb-in-hold, MLF VORTAC, right
turns, 348° inbound to cross MLF VORTAC at or above
MEA/MCA for Route of flight.

... or climb in visual conditions to cross Milford Muni/Ben
and Judy Briscoe Field airport southbound at or above
6400, then climb on MLF VORTAC R-345 to MLF
VORTAC. Aircraft departing on V235 and V21
southbound; proceed on course. All other aircraft climb to
11000 on MLF VORTAC R-168, then, right turn direct
MLF VORTAC. Continue climb-in hold, right turns, 348°
inbound to cross MLF VORTAC at or above MEA/MCA
for route of flight.

TAKEOFF OBSTACLE NOTES: **Rwy 16**, trees beginning
440' from DER, 332' right of centerline, up to 100'
AGL/5159' MSL. Trees beginning 4912' from DER, 1451'
right of centerline, up to 100' AGL/5179' MSL. **Rwy 34**,
vehicles on roadway 231' from DER, across centerline,
up to 15' AGL/5054' MSL. Trees beginning 3177' from
DER, 508' left of centerline, up to 100' AGL/5119' MSL.

MINDEN, NV

MINDEN-TAHOE (MEV)

TAKEOFF MINIMUMS AND (OBSTACLE)
DEPARTURE PROCEDURES
AMDT 2 11349 (FAA)

TAKEOFF MINIMUMS: **Rwys 12, 16, 30**, NA - Obstacles.
DEPARTURE PROCEDURE: **Rwy 34**, use MINDEN
(RNAV) DEPARTURE.

TAKEOFF MINIMUMS, (OBSTACLE) DEPARTURE PROCEDURES, AND DIVERSE VECTOR AREA (RADAR VECTORS)

20030

SW-4

TAKEOFF MINIMUMS, (OBSTACLE) DEPARTURE PROCEDURES, AND DIVERSE VECTOR AREA (RADAR VECTORS)

20030

MOAB, UT

CANYONLANDS FIELD (CNY)

TAKEOFF MINIMUMS AND (OBSTACLE) DEPARTURE PROCEDURES

AMDT 4 19003 (FAA)

TAKEOFF MINIMUMS: **Rwys 15, 33**, NA - Runway Surface. **Rwy 3**, std. w/min. climb of 405' per NM to 6100 or 5000-3 for VCOA. **Rwy 21**, std. w/min. climb of 456' per NM to 6100 or 5000-3 for VCOA.

DEPARTURE PROCEDURE: **Rwy 3**, climbing left turn to 6700 on OAB R-298, thence... **Rwy 21**, climbing right turn to 6700 on OAB R-298, thence...

...Climbing right turn to 10000 direct OAB VOR/DME. Continue climb in holding to 10000 at OAB VOR/DME (northwest, left turn, 118° inbound) before proceeding on course.

VCOA: **Rwys 3, 21**, obtain ATC approval for VCOA when requesting IFR clearance. Climb in visual conditions to cross Canyonlands Field at or above 9400 before proceeding on course.

TAKEOFF OBSTACLE NOTES: **Rwy 3**, terrain 46' from DER, 484' right of centerline, 4559' MSL. Tree 63' from DER, 481' left of centerline, 4564' MSL. Tree 86' from DER, 509' left of centerline, 4565' MSL. Electrical system 135' from DER, 529' right of centerline, 34' AGL/4595' MSL. Transmission line 1108' from DER, 589' right of centerline, 51' AGL/4596' MSL. Transmission line 1786' from DER, 606' left of centerline, 50' AGL/4603' MSL. Terrain 1.5 NM from DER, 1600' right of centerline, 4827' MSL. Terrain 2.5 NM from DER, 1185' left of centerline, 4990' MSL. **Rwy 21**, bush beginning 60' from DER, 79' left of centerline, up to 10' AGL/4581' MSL. Bush beginning 132' from DER, 65' right of centerline, up to 10' AGL/4597' MSL. Pole 1658' from DER, 128' left of centerline, 85' AGL/4625' MSL. Pole 1710' from DER, 319' right of centerline, 4602' MSL. Pole 1827' from DER, 831' right of centerline, 4623' MSL. Bush 1.5 NM from DER, 2256' left of centerline, 10' AGL/4797' MSL. Bush beginning 1.9 NM from DER, 3289' right of centerline, up to 4868' MSL. Terrain 1.9 NM from DER, 2742' right of centerline, 4899' MSL. Traverse way beginning 2 nm from DER, 39' left of centerline, up to 10' AGL/4984' MSL. Traverse way beginning 2.1 NM from DER, 297' left of centerline, up to 10' AGL/4994' MSL. Trees beginning 2.1 NM from DER, 91' left of centerline, up to 10' AGL/5014' MSL.

NELLIS AFB (KLSV)

LAS VEGAS, NV

TAKEOFF MINIMUMS AND (OBSTACLE) DEPARTURE PROCEDURES

AMDT 3 20030

TAKEOFF MINIMUMS: **Rwy 3L**, 2500-3 SR-SS or std. w/ min climb of 270' per NM to 3700. **Rwy 3R**, 2700-3 SR-SS or std. w/min climb of 245' per NM to 4700.

Rwy 21L/R, 9100-3 SR-33.

DEPARTURE PROCEDURE: **Rwy 3L/R**, climb hdg 040°, expect radar vectors passing 5400' MSL from RAPCON. **Rwy 21L/R**, diverse departure N/A.

TAKEOFF OBSTACLE NOTES: **Rwy 3L**, potential C-5 on twy 215' inward of DER, 390' right of cntrln, 65' AGL/1934' MSL. **Rwy 3R**, potential C-5 on twy 147' inward of DER, 610' left of cntrln, 65' AGL/1934' MSL. **Rwy 21L**, potential C-5 on twy 38' inward of DER, 580' left of cntrln, 65' AGL/1890' MSL. Potential C-5 on twy 89' inward of DER, 521' right of cntrln, 65' AGL/1895' MSL. Trees 1387' from DER, 744' left of cntrln, 49' AGL/1871' MSL. Trees 2138' from DER, 478' left of cntrln, 44' AGL/1866' MSL. Trees 1022' from DER, 800' left of cntrln, 46' AGL/1868' MSL. **Rwy 21R**, twr 1465' from DER, 1137' right of cntrln, 101' AGL/1938' MSL. Potential C-5 on twy 89' inward of DER, 454' left of cntrln, 65' AGL/1896' MSL. Potential C-130 on twy 39' inward of DER, 384' right of cntrln, 39' AGL/1877' MSL.

DIVERSE VECTOR AREA (RADAR VECTORS)

AMDT 1 20030

Rwy 3L/R, N/A-terrain. **Rwy 21L/R**, hdg as assigned by ATC; requires min climb of 281 (Mil)/296 (Civ) ft/NM until 12,000.

NEPHI, UT

NEPHI MUNI (U14)

TAKEOFF MINIMUMS AND (OBSTACLE) DEPARTURE PROCEDURES

ORIG 11293 (FAA)

DEPARTURE PROCEDURE: Use NEPHI DEPARTURE.

30 JAN 2020 to 27 FEB 2020

30 JAN 2020 to 27 FEB 2020

TAKEOFF MINIMUMS, (OBSTACLE) DEPARTURE PROCEDURES, AND DIVERSE VECTOR AREA (RADAR VECTORS)

20030

NOGALES, AZ

NOGALES INTL (OLS)

TAKEOFF MINIMUMS AND (OBSTACLE) DEPARTURE PROCEDURES AMDT 3 18312 (FAA)

TAKEOFF MINIMUMS: Use NOGALES DEPARTURE.
TAKEOFF OBSTACLE NOTES: **Rwy 3**, tree 58' from DER, 455' left of centerline, 3963' MSL. Tree 80' from DER, 174' right of centerline, 6' AGL/3958' MSL. Trees beginning 97' from DER, 446' left of centerline, up to 15' AGL/3964' MSL. Tree 252' from DER, 43' right of centerline, 5' AGL/3962' MSL. Tree 261' from DER, 463' left of centerline, 3971' MSL. Trees beginning 308' from DER, 37' right of centerline, up to 9' AGL/3964' MSL. Trees, fence beginning 334' from DER, 136' left of centerline, up to 3987' MSL. Trees beginning 368' from DER, 64' right of centerline, up to 3991' MSL. Tree, terrain beginning 603' from DER, 546' right of centerline, up to 3993' MSL. Trees, fence, terrain beginning 659' from DER, 13' left of centerline, up to 3995' MSL. Trees, terrain, fence beginning 833' from DER, 103' right of centerline, up to 4010' MSL. Trees, terrain beginning 1179' from DER, 118' left of centerline, up to 5' AGL/3996' MSL. Trees, terrain beginning 1199' from DER, 97' right of centerline, up to 4036' MSL. Trees, terrain beginning 1241' from DER, 66' left of centerline, up to 4018' MSL. Trees, terrain beginning 1412' from DER, 90' right of centerline, up to 4043' MSL. Traverse way, terrain beginning 1624' from DER, 642' left of centerline, up to 4028' MSL. Terrain beginning 1637' from DER, 2' right of centerline, up to 4052' MSL. Trees, traverse way, terrain beginning 1688' from DER, 45' left of centerline, up to 4035' MSL. Terrain beginning 1825' from DER, 38' right of centerline, up to 4067' MSL. Pole, traverse way, trees beginning 1853' from DER, 475' left of centerline, up to 21' AGL/4043' MSL. Terrain 2033' from DER, 186' left of centerline, 4047' MSL. Trees, traverse way, terrain beginning 2041' from DER, 74' left of centerline, up to 7' AGL/4052' MSL. Terrain 2221' from DER, 269' left of centerline, 4055' MSL. Tree, traverse way, terrain beginning 2253' from DER, 170' left of centerline, up to 18' AGL/4080' MSL. Terrain beginning 2354' from DER, 20' right of centerline, up to 4068' MSL. Trees, traverse way, pole, terrain beginning 2491' from DER, 55' left of centerline, up to 14' AGL/4093' MSL. Terrain beginning 2539' from DER, 125' right of centerline, up to 4087' MSL. Traverse way 2657' from DER, 32' left of centerline, 15' AGL/4095' MSL. Traverse way, trees, terrain beginning 2672' from DER, 6' left of centerline, up to 15' AGL/4096' MSL. Traverse way, terrain beginning 2688' from DER, 2' right of centerline, up to 15' AGL/4096' MSL. Terrain, traverse way beginning 2768' from DER, 98' right of centerline, up to 4112' MSL. Traverse way 2987' from DER, 530' right of centerline, 4117' MSL. Traverse way 2995' from DER, 635' right of centerline, 4121' MSL. Traverse way, terrain beginning 3009' from DER, 489' right of centerline, up to 4123' MSL. Tree, traverse way, terrain beginning 3351' from DER, 12' right of centerline, up to 4130' MSL. Traverse way, terrain beginning 3449' from DER, 633' right of centerline, up to 4143' MSL. Traverse way 3499' from DER, 1364' right of centerline, 4149' MSL. Traverse way, terrain, vegetation beginning 3570' from DER, 101' right of centerline, up to 4155' MSL. Tree, terrain beginning 3581' from DER, 42' left of centerline, up to 4112' MSL. Terrain beginning 4127' from DER, 627' right of centerline, up to 4156' MSL. Tree, terrain beginning 4143' from DER, 768' right of centerline, up to 4180' MSL.

NOGALES, AZ (CON'T)

NOGALES INTL (OLS) (CON'T)

Rwy 3 (CON'T), trees, terrain beginning 4262' from DER, 426' right of centerline, up to 4184' MSL. Tree, terrain beginning 4495' from DER, 709' right of centerline, up to 4210' MSL. Terrain beginning 4627' from DER, 1171' right of centerline, up to 4217' MSL. Tree, terrain beginning 4737' from DER, 216' right of centerline, up to 4223' MSL. Tree, terrain beginning 5806' from DER, 409' right of centerline, up to 4241' MSL. Trees, terrain beginning 5953' from DER, 420' right of centerline, up to 4254' MSL. Trees, terrain beginning 1 NM from DER, 58' right of centerline, up to 4256' MSL. Trees, terrain beginning 1 NM from DER, 1260' left of centerline, up to 4136' MSL. Trees, terrain beginning 1.1 NM from DER, 442' left of centerline, up to 4151' MSL. Pole, trees, terrain beginning 1.2 NM from DER, 164' left of centerline, up to 16' AGL/4221' MSL. Trees, terrain beginning 1.3 NM from DER, 84' left of centerline, up to 4254' MSL. Trees, terrain beginning 1.4 NM from DER, 58' right of centerline, up to 11' AGL/4326' MSL. Trees, terrain beginning 1.4 NM from DER, 25' left of centerline, up to 11' AGL/4283' MSL. Trees, terrain beginning 1.5 NM from DER, 79' right of centerline, up to 11' AGL/4327' MSL. Trees, terrain beginning 1.7 NM from DER, 639' right of centerline, up to 4345' MSL. Trees, terrain beginning 1.8 NM from DER, 172' right of centerline, up to 4367' MSL. Trees, terrain beginning 1.9 NM from DER, 628' right of centerline, up to 4384' MSL. Terrain, traverse way, trees beginning 2 NM from DER, 935' right of centerline, up to 4406' MSL. Terrain 2.1 NM from DER, 616' left of centerline, 4299' MSL. Trees, terrain, traverse way beginning 2.2 NM from DER, 1859' right of centerline, up to 4451' MSL. Trees, traverse way, terrain beginning 2.2 NM from DER, 234' left of centerline, up to 4359' MSL. Trees, terrain, traverse way beginning 2.3 NM from DER, 835' right of centerline, up to 14' AGL/4535' MSL. **Rwy 21**, tree 3' from DER, 445' left of centerline, 3847' MSL. Tree 19' from DER, 141' left of centerline, 10' AGL/3848' MSL. Tree 29' from DER, 339' left of centerline, 3849' MSL. Tree, vegetation beginning 45' from DER, 201' left of centerline, up to 17' AGL/3851' MSL. Tree 48' from DER, 504' right of centerline, 3845' MSL. Trees, vegetation beginning 112' from DER, 49' right of centerline, up to 24' AGL/3854' MSL.

OGDEN, UT

OGDEN-HINCKLEY (OGD)

TAKEOFF MINIMUMS AND (OBSTACLE) DEPARTURE PROCEDURES AMDT 2B 19059 (FAA)

DEPARTURE PROCEDURE: Use EMONT DEPARTURE.
TAKEOFF MINIMUMS: **Rwy 3**, NAVAID, vehicle on road beginning 195' from DER, 267' right of centerline, up to 17' AGL/4426' MSL. Pole 241' from DER, 535' left of centerline, 39' AGL/4447' MSL. Pole 348' from DER, 582' right of centerline, 41' AGL/4451' MSL. Trees, building beginning 375' from DER, 62' left of centerline, up to 4451' MSL. Tree, pole beginning 430' from DER, 502' right of centerline, up to 4455' MSL. **Rwy 21**, tree 702' from DER, 409' left of centerline, 4492' MSL. Tree 1133' from DER, 701' left of centerline, 4513' MSL. Trees, building, pole beginning 2074' from DER, 792' left of centerline, up to 4570' MSL. Tree 3429' from DER, 421' right of centerline, 4561' MSL. **Rwy 35**, tree 209' from DER, 185' left of centerline, 4446' MSL. Tree 243' from DER, 233' left of centerline, 4447' MSL. Trees beginning 292' from DER, 87' right of centerline, up to 4454' MSL. Tree 686' from DER, 397' right of centerline, 4479' MSL.

TAKEOFF MINIMUMS, (OBSTACLE) DEPARTURE PROCEDURES, AND DIVERSE VECTOR AREA (RADAR VECTORS)

20030

SW-4

TAKEOFF MINIMUMS, (OBSTACLE) DEPARTURE PROCEDURES, AND DIVERSE VECTOR AREA (RADAR VECTORS)

20030

PAGE, AZ

PAGE MUNI (PGA)

TAKEOFF MINIMUMS AND (OBSTACLE) DEPARTURE PROCEDURES
AMDT 2A 16203 (FAA)

TAKEOFF MINIMUMS: **Rwys 7, 25**, NA – obstacles.
Rwy 15, std. w/ min. climb of 285' per NM to 6500, or 3100-3 for climb in visual conditions.

DEPARTURE PROCEDURE: **Rwy 33**, Climb heading 336° to 6000, then climbing left turn direct PGA VOR/DME, thence... **Rwy 15**, Climb heading 156° to 6200, then climbing right turn direct PGA VOR/DME, thence... ..cross PGA VOR/DME at or above 7700. Continue climb in PGA VOR/DME holding pattern (hold nw, right turns 147° Inbound) to cross PGA VOR/DME at or above MEA/MCA for direction of flight.

VCOA: **Rwy 15**, obtain ATC approval for climb in visual conditions when requesting IFR clearance. Climb in visual conditions to cross Page Muni airport at or above 7300 before proceeding on course.

TAKEOFF OBSTACLE NOTES: **Rwy 15**, rising terrain 192' from DER, 272' right of centerline, 4323' MSL.

PANGUITCH, UT

PANGUITCH MUNI (U55)

TAKEOFF MINIMUMS AND (OBSTACLE) DEPARTURE PROCEDURES
ORIG 11153 (FAA)

TAKEOFF MINIMUMS: **Rwy 18**, std. w/min. climb of 350' per NM to 9200 or 2200-3 for climb in visual conditions.
Rwy 36, std. w/min. climb of 450' per NM to 9500 or 2200-3 for climb in visual conditions.

DEPARTURE PROCEDURE: **Rwy 18**, climb heading 185° to 9200 then left turn to intercept BCE VORTAC R-274, continue climb to 12000 to BCE VORTAC, or for climb in visual conditions: cross Panguitch Muni Airport southeast bound at or above 8800' MSL then via BCE R-320 to BCE VORTAC thence ... **Rwy 36**, climb heading 005° to 9500 then left turn to intercept BCE VORTAC R-323 (V257), continue climb to 12000 to BCE VORTAC, or for climb in visual conditions: cross Panguitch Muni Airport southeast bound at or above 8800' MSL then via BCE R-320 to BCE VORTAC thence...

...continue climb in BCE VORTAC holding pattern (hold southwest, right turn, 045° inbound) to cross BCE VORTAC at or above MEA for route of flight.

TAKEOFF OBSTACLE NOTES: **Rwy 36**, terrain 64' from DER, 426' right of centerline, 6775' MSL. Terrain 426' from DER, 565' right of centerline, 6779' MSL. **Rwy 18**, terrain beginning 114' from DER, 306' left of centerline, 6758' MSL. Terrain 26' from DER, 229' left of centerline, 6756' MSL. Terrain 388' from DER, 91' left of centerline, 6766' MSL. Terrain 316' from DER, 321' left of centerline, 6766' MSL.

PARKER, AZ

AVI SUQUILLA (P20)

TAKEOFF MINIMUMS AND (OBSTACLE) DEPARTURE PROCEDURES
AMDT 1 14261 (FAA)

TAKEOFF MINIMUMS: **Rwy 1**, std. w/min. climb of 275' per NM to 2700 or 1800-2½ for climb in visual conditions.
DEPARTURE PROCEDURE: **Rwy 1**, climb heading 012° to 1400 then climbing right turn to intercept PKE VORTAC R-067 to PKE VORTAC. **Rwy 19**, climbing right turn to intercept PKE VORTAC R-067 to PKE VORTAC.

VCOA: **Rwy 1**, obtain ATC approval for climb in visual conditions when requesting IFR clearance. Climb in visual conditions to cross Avi Suquilla airport at or above 2100 then proceed on PKE R-067 to PKE VORTAC.

PAYSON, AZ

PAYSON (PAN)

TAKEOFF MINIMUMS AND (OBSTACLE) DEPARTURE PROCEDURES
AMDT 1A 12320 (FAA)

TAKEOFF MINIMUMS: **Rwy 6**, std. w/ min. climb of 360' per NM to 9300, or 2500-3 for climb in visual conditions.

Rwy 24, std. w/ min. climb of 375' per NM to 9300, or 2500-3 for climb in visual conditions.

DEPARTURE PROCEDURE: **Rwys 6, 24**, for climb in visual conditions: Cross Payson Airport at or above 7500 MSL before proceeding on course. When executing VCOA, notify ATC prior to departure.

TAKEOFF OBSTACLE NOTES: **Rwy 6**, tree 197' from DER, 118' right of centerline, up to 12' AGL/5170' MSL. Bush 83' from DER, 99' right of centerline, up to 3' AGL/5161' MSL. **Rwy 24**, bush 15' from DER, 133' right of centerline, 6' AGL/5148' MSL. Tree 320' from DER, 183' right of centerline, 12' AGL/5154' MSL. Fence 85' from DER, 84' left of centerline, 4' AGL/5141' MSL. Tree 164' from DER, 126' left of centerline, 9' AGL/5147' MSL.

PHOENIX, AZ

PHOENIX DEER VALLEY (DVT)

TAKEOFF MINIMUMS AND (OBSTACLE) DEPARTURE PROCEDURES
AMDT 6 18144 (FAA)

DEPARTURE PROCEDURE: Use DEER VALLEY DEPARTURE.

TAKEOFF OBSTACLE NOTES: **Rwy 7L**, multiple poles and vegetation beginning 912' from DER, 125' left of centerline, up to 30' AGL/2,423' MSL. Cactus 3,824' from DER, 96' right of centerline, 16' AGL/1,596' MSL. Windsock 340' from DER, 354' right of centerline, 9' AGL/1,488' MSL. **Rwy 7R**, multiple antennas and vegetation beginning 546' from DER, 267' left of centerline up to 52' AGL/1,952' MSL. Multiple antennas and vegetation beginning 978' from DER, 431' right of centerline up to 40' AGL/1,609' MSL. **Rwy 25R**, multiple antennas beginning 1.4 NM from DER, 1,847' right of centerline, up to 96' AGL/1,806' MSL. **Rwy 25L**, pole 1,127' from DER, 498' right of centerline, 36' AGL/1,475' MSL. Pole 1,184' from DER, 495' left of centerline, 32' AGL/1,471' MSL.

DIVERSE VECTOR AREA (RADAR VECTORS)

ORIG 14317 (FAA)

Rwys 25L, 25R, heading as assigned by ATC; requires minimum climb of 370' per NM to 4600.

30 JAN 2020 to 27 FEB 2020

30 JAN 2020 to 27 FEB 2020

TAKEOFF MINIMUMS, (OBSTACLE) DEPARTURE PROCEDURES, AND DIVERSE VECTOR AREA (RADAR VECTORS)

20030

SW-4

TAKEOFF MINIMUMS, (OBSTACLE) DEPARTURE PROCEDURES, AND DIVERSE VECTOR AREA (RADAR VECTORS)

20030

PHOENIX, AZ (CON'T)

PHOENIX SKY HARBOR INTL (PHX)

TAKEOFF MINIMUMS AND (OBSTACLE)

DEPARTURE PROCEDURES

AMDT 6 14261 (FAA)

TAKEOFF MINIMUMS: **Rwy 26**, 600-2¾ or std. w/min. climb of 326' per NM to 1900.

DEPARTURE PROCEDURE: **Rwys 7L, 7R, 8**, climb heading 078° to 3000, then climbing right turn direct PXR VORTAC. **Rwys 25L, 25R**, climb heading 258° to 1900 then climbing right turn to join PXR R-260 (V16) westbound, climb to 5000. **Rwy 26**, climb heading 258° to 1550, then join PXR R-260 (V16) westbound, climb to 5000. Westbound departures continue climb on PXR R-260. All others, climbing right turn direct PXR VORTAC.

TAKEOFF OBSTACLE NOTES: **Rwy 7R**, transmission towers and power lines, 3201' from DER, 1122' right of centerline, up to 131' AGL/1260' MSL. **Rwy 8**, multiple light poles, beginning 2539' from DER, 900' left of centerline, up to 82' AGL/1234' MSL. Light pole, 1639' from DER, 793' right of centerline, 46' AGL/1177' MSL. **Rwy 25L**, multiple light poles, beginning 681' from DER, 521' left of centerline, up to 63' AGL/1166' MSL. Sign, 902' from DER, 711' left of centerline, 64' AGL/1170' MSL. Multiple light poles, beginning 1519' from DER, 535' left of centerline, up to 99' AGL/1201' MSL. Multiple light poles, beginning 1919' from DER, 598' left of centerline, up to 90' AGL/1192' MSL. **Rwy 26**, pole, 42' from DER, 440' left of centerline, 26' AGL/1135' MSL. Fence, 176' from DER, 547' left of centerline, 11' AGL/1120' MSL. Pole, 315' from DER, 499' left of centerline, 11' AGL/1120' MSL. Tree, 763' from DER, 642' left of centerline, 24' AGL/1135' MSL. Pole, 1959' from DER, 923' left of centerline, 59' AGL/1163' MSL. Pole, 2312' from DER, 318' left of centerline, 66' AGL/1169' MSL. Pole, 2336' from DER, 578' left of centerline, 67' AGL/1170' MSL. Pole, 78' from DER, 456' right of centerline, 32' AGL/1142' MSL. Pole, 82' from DER, 64' right of centerline, 18' AGL/1127' MSL. Tree, 118' from DER, 294' right of centerline, 22' AGL/1133' MSL. Tree, 239' from DER, 214' right of centerline, 22' AGL/1133' MSL. Tree, 414' from DER, 522' right of centerline, 24' AGL/1135' MSL. Sign, 520' from DER, 567' right of centerline, 16' AGL/1125' MSL. Pole, 2301' from DER, 193' right of centerline, 69' AGL/1171' MSL. Pole, 2302' from DER, 661' right of centerline, 68' AGL/1171' MSL.

DIVERSE VECTOR AREA (RADAR VECTORS)

AMDT 2 14317 (FAA)

Rwys 7L, 7R, 8, heading as assigned by ATC. **Rwy 25L**, heading as assigned by ATC; requires minimum climb of 305' per NM to 6000. **Rwy 25R**, heading as assigned by ATC; requires minimum climb of 325' per NM to 6000. **Rwy 26**, heading as assigned by ATC; requires minimum climb of 300' per NM to 6000.

PHOENIX, AZ (CON'T)

PHOENIX-MESA GATEWAY (IWA)

TAKEOFF MINIMUMS AND (OBSTACLE)

DEPARTURE PROCEDURES

AMDT 2 18144 (FAA)

DEPARTURE PROCEDURE: Use PHOENIX DEPARTURE.

TAKEOFF OBSTACLE NOTES: **Rwy 30L/C/R**, trees beginning 351' from DER, 351' left of centerline, up to 20' AGL/1,359' MSL. Trees beginning 689' from DER, 398' right of centerline, up to 20' AGL/1,359' MSL.

DIVERSE VECTOR AREA (RADAR VECTORS)

AMDT 1 15232 (FAA)

Rwys 12L, 12C, 12R, as assigned by ATC; requires minimum climb of 250' per NM to 3100. **Rwys 30L, 30C, 30R**, heading as assigned by ATC.

30 JAN 2020 to 27 FEB 2020

30 JAN 2020 to 27 FEB 2020

TAKEOFF MINIMUMS, (OBSTACLE) DEPARTURE PROCEDURES, AND DIVERSE VECTOR AREA (RADAR VECTORS)

20030

SW-4

TAKEOFF MINIMUMS, (OBSTACLE) DEPARTURE PROCEDURES, AND DIVERSE VECTOR AREA (RADAR VECTORS)

20030

PRESCOTT, AZ

PRESCOTT RGNL-ERNEST A LOVE FIELD (PRC)

TAKEOFF MINIMUMS AND (OBSTACLE)
DEPARTURE PROCEDURES

AMDT 5A 19171 (FAA)

DEPARTURE PROCEDURE: Use PRESCOTT
DEPARTURE.

TAKEOFF OBSTACLE NOTES: **Rwy 3L**, lighting 8' from DER, 19' right of centerline, 1' AGL/4939' MSL. Sign 15' from DER, 126' left of centerline, 3' AGL/4939' MSL. Tree 20' from DER, 408' left of centerline, 4949' MSL. Tree 184' from DER, 404' left of centerline, 4951' MSL. **Rwy 12**, tree 4' from DER, 323' right of centerline, 5066' MSL. Buildings, lighting, sign beginning 9' from DER, 122' left of centerline, up to 31' AGL/5057' MSL. Tree, utility pole, sign, terrain beginning 19' from DER, 65' right of centerline, up to 28' AGL/5086' MSL. Terrain, trees, building, lighting beginning 24' from DER, 111' left of centerline, up to 46' AGL/5062' MSL. Terrain, road beginning 196' from DER, 317' left of centerline, up to 5069' MSL. Trees beginning 302' from DER, 361' left of centerline, up to 45' AGL/5083' MSL. Tower, road, trees, pole beginning 426' from DER, 267' left of centerline, up to 46' AGL/5092' MSL. Terrain, trees beginning 2.1 NM from DER, 2368' right of centerline, up to 56' AGL/5656' MSL. **Rwy 21R**, sign, terrain beginning 11' from DER, 82' left of centerline, up to 2' AGL/4977' MSL. Sign, trees, road, building, electrical system, pole, tank beginning 11' from DER, 19' right of centerline, up to 50' AGL/5024' MSL. Trees beginning 90' from DER, 70' left of centerline, up to 50' AGL/5041' MSL. Trees, poles, building beginning 752' from DER, 22' right of centerline, up to 50' AGL/5031' MSL. Tree, pole beginning 940' from DER, 3' left of centerline, up to 50' AGL/5044' MSL. Trees, poles, building beginning 980' from DER, 22' right of centerline, up to 50' AGL/5044' MSL. Fence, trees, poles, road, building, stack, tank beginning 1207' from DER, 35' right of centerline, up to 57' AGL/5054' MSL. Trees, poles beginning 1561' from DER, left and right of centerline, up to 50' AGL/5064' MSL. Trees beginning 1954' from DER, 129' left of centerline, 50' AGL/5064' MSL. Trees beginning 2325' from DER, left and right of centerline, up to 50' AGL/5080' MSL. Trees beginning 2615' from DER, 140' left of centerline, up to 50' AGL/5077' MSL. Building, trees beginning 2718' from DER, 35' right of centerline, up to 50' AGL/5093' MSL. Trees, pole beginning 3134' from DER, 128' left of centerline, up to 50' AGL/5090' MSL. Trees, beginning 3442' from DER, 24' right of centerline, up to 50' AGL/5103' MSL. Trees beginning 3527' from DER, 175' left of centerline, up to 50' AGL/5103' MSL. Antenna, building, trees beginning 3772' from DER, left and right of centerline, up to 90' AGL/5116' MSL. Trees beginning 4194' from DER, 145' right of centerline, up to 5113' MSL. Trees beginning 4759' from DER, left and right of centerline, up to 75' AGL/5117' MSL. Trees beginning 5180' from DER, 15' right of centerline, 70' AGL/5119' MSL. Trees beginning 5408' from DER, 743' right of centerline, up to 50' AGL/5126' MSL. **Rwy 21L**, lighting, fence beginning 30' from DER, 336' left of centerline, up to 7' AGL/5042' MSL. Road, fence, tree beginning 111' from DER, 469' left of centerline, up to 5051' MSL. Road, fence beginning 300' from DER, 455' left of centerline, up to 5056' MSL. Wind indicator, pole, tree, roads beginning 402' from DER, 269' right of centerline, up to 5076' MSL. Tree, fence, roads, lighting, pole, sign, NAVAID, building beginning 614' from DER, 41' left of centerline, up to 5113' MSL. Trees, road beginning 782' from DER, 528' right of centerline, up to 47' AGL/5089' MSL. Trees, road, pole, fence, electrical system, building, lighting, antenna beginning 971' from DER, 2' right of centerline, up to 70' AGL/5117' MSL. Trees beginning 1779' from DER, 108' left of centerline, up to 71' AGL/5116' MSL. **Rwy 30**, buildings, sign, poles beginning 28' from DER, 127' left of centerline, up to 25' AGL/5041' MSL.

PRESCOTT, AZ (CON'T)

PRESCOTT RGNL-ERNEST A LOVE FIELD (PRC) (CON'T)

DIVERSE VECTOR AREA (RADAR VECTORS)
ORIG-A 19171 (FAA)

Rwys 3L/R, heading as assigned by ATC. **Rwy 12**, heading as assigned by ATC; requires minimum climb of 370' per NM to 7700. **Rwys 21L/R**, heading as assigned by ATC; requires minimum climb of 390' per NM to 8300. **Rwy 30**, heading as assigned by ATC.

PRICE, UT

CARBON COUNTY RGNL/BUCK DAVIS FIELD (PUC)

TAKEOFF MINIMUMS AND (OBSTACLE)
DEPARTURE PROCEDURES

AMDT 5 15064 (FAA)

TAKEOFF MINIMUMS: **Rwy 1**, std. w/min. climb of 400' per NM to 6800 or 3300-3 for climb in visual conditions. **Rwy 8**, NA - obstacles. **Rwy 33**, std. w/min. climb of 370' per NM to 6700 or 3300-3 for climb in visual conditions.

DEPARTURE PROCEDURE: **Rwy 1**, climb to 6400 then climbing right turn on a heading between 144° CW to 187°, maintain 210 KIAS until completion of turn, thence . . .

Rwy 15, climb on a heading between 129° CW to 196°, thence . . .

Rwy 19, climb on a heading between 195° CCW to 128°, thence . . .

Rwy 26, climb on a heading between 179° CCW to 127°, thence . . .

Rwy 33, climb to 6300 then climbing left turn on a heading between 178° CCW to 148°, thence . . .
. . . continue climb to assigned altitude for direction of flight.

VCOA: **Rwys 1, 33**, obtain ATC approval for climb in visual conditions when requesting IFR clearance. Climb in visual conditions to cross Carbon County RGNL airport/Buck Davis Field at or above 9100 before proceeding on course.

TAKEOFF OBSTACLE NOTES: **Rwy 1**, multiple trees and poles beginning 164' from DER, left and right of centerline, up to 64' AGL/6207' MSL.

30 JAN 2020 to 27 FEB 2020

30 JAN 2020 to 27 FEB 2020

TAKEOFF MINIMUMS, (OBSTACLE) DEPARTURE PROCEDURES, AND DIVERSE VECTOR AREA (RADAR VECTORS)

20030

SW-4

TAKEOFF MINIMUMS, (OBSTACLE) DEPARTURE PROCEDURES, AND DIVERSE VECTOR AREA (RADAR VECTORS)

20030

PROVO, UT

PROVO MUNI (PVU)

DEPARTURE PROCEDURE: Use PROVO DEPARTURE.

RENO, NV

RENO/STEAD (RTS)

TAKEOFF MINIMUMS AND (OBSTACLE) DEPARTURE PROCEDURES

AMDT 3A 09183 (FAA)

TAKEOFF MINIMUMS: CAT A,B only, CAT C,D NA.

Rwys 8, 14, 1300-2 or std. with a min. climb of 400' per NM to 6500. **Rwy 26**, 1900-2 or std. with a min. climb of 410' per NM to 7200. **Rwy 32**, 2300-2 or std. with a min. climb of 420' per NM to 7200.

DEPARTURE PROCEDURE: **Rwys 8, 32**, climbing right turn heading 100° and FMG VORTAC R-314 to FMG VORTAC. **Rwy 14**, left turn climb direct FMG VORTAC. **Rwy 26**, climbing right turn heading 050° and FMG VORTAC R-314 to FMG VORTAC. **All aircraft** climb in FMG VORTAC holding pattern (NE, right turns, 221° inbound) to depart FMG VORTAC; R-260 CW R-170 at or above 10000; R-171 CW R-195 at or above 10500; R-196 CW R-259 at or above 12000.

RENO/TAHOE INTL (RNO)

TAKEOFF MINIMUMS AND (OBSTACLE) DEPARTURE PROCEDURES

AMDT 4 07354 (FAA)

TAKEOFF MINIMUMS: **Rwy 7**, NA-terrain. **Rwy 16L**, std. w/ min. climb of 730' per NM to 8000, or 600-1½ w/ min. climb of 480' per NM to 8000, or 2700-3 for climb in visual conditions. **Rwy 16R**, std. w/ the following minimum climb requirements: 210 knots or less, 385' per NM to 8000; more than 210 knots, 420' per NM to 8900, or 2700-3 for climb in visual conditions. Resume normal speed after passing FMG VORTAC. **Rwy 25**, std. w/ min. climb of 470' per NM to 7800, or 2700-3 for climb in visual conditions. **Rwy 34L**, std. w/ min. climb of 320' per NM to 7000, or 2700-3 for climb in visual conditions. **Rwy 34R**, std. w/ min. climb of 480' per NM to 7000, or 500-1½ w/ min. climb of 320' per NM to 7000, or 2700-3 for climb in visual conditions.

DEPARTURE PROCEDURE: **Rwys 16L/R**, climb heading 164° to 6600 then climbing left turn direct FMG VORTAC, thence. . . or for climb in visual conditions: cross Reno/Tahoe Intl Airport at or above 7000 via heading 054° and FMG R-234 to FMG VORTAC, thence. . . **Rwy 25**, climb heading 254° to 5000 then climbing right turn direct FMG VORTAC, thence. . . or for climb in visual conditions: cross Reno/Tahoe Intl Airport at or above 7000 via heading 054° and FMG R-234 to FMG VORTAC, thence. . . **Rwys 34L/R**, climb heading 344° to 7000 then climbing right turn direct FMG VORTAC, thence. . . or for climb in visual conditions: cross Reno/Tahoe Intl Airport at or above 7000 via heading 054° and FMG R-234 to FMG VORTAC, thence. . .

. . . **All aircraft**: continue climb in FMG VORTAC holding pattern (northeast, left turn, 221° inbound) to cross FMG VORTAC at or above MEA/MCA for route of flight.

TAKEOFF OBSTACLE NOTES: **Rwy 16L**, multiple poles, trees, bushes and terrain beginning 618' from DER, 133' left of centerline, up to 20' AGL/4961' MSL. **Rwy 16R**, multiple trees 2784' from DER, 171' right of centerline, up to 20' AGL/4510' MSL. Multiple trees and terrain beginning 746' from DER, 380' left of centerline, up to 20' AGL/4703' MSL.

RENO, NV (CON'T)

RENO/TAHOE INTL (RNO) (CON'T)

Rwy 25, multiple trees and poles beginning 829' from DER, 201' right of centerline, up to 103' AGL/4523' MSL. Building 6023' from DER, 456' right of centerline, 152' AGL/4608' MSL. Fence 222' from DER, 270' right of centerline, up to 5' AGL/4415' MSL. Multiple trees and poles beginning 500' from DER, 31' left of centerline, up to 20' AGL/4506' MSL. **Rwy 34L**, multiple trees and poles beginning 1229' from DER, 180' right of centerline, up to 20' AGL/4498' MSL. Multiple trees beginning 1193' from DER, 331' left of centerline, up to 20' AGL/4489' MSL. **Rwy 34R**, multiple trees and poles beginning 1067' from DER, 172' right of centerline, up to 20' AGL/4497' MSL. Multiple trees and poles beginning 1230' from DER, 350' left of centerline, up to 20' AGL/4498' MSL. Building 1.2 NM from DER, 1730' right of centerline, 363' AGL/4780' MSL.

DIVERSE VECTOR AREA (RADAR VECTORS)

ORIG 15008 (FAA)

Rwy 25, heading as assigned by ATC; requires minimum climb of 500' per NM to 8100. **Rwy 34L**, heading as assigned by ATC; requires minimum climb of 460' per NM to 7700. **Rwy 34R**, heading as assigned by ATC; requires minimum climb of 410' per NM to 8100.

RICHFIELD, UT

RICHFIELD MUNI (RIF)

TAKEOFF MINIMUMS AND (OBSTACLE) DEPARTURE PROCEDURES

AMDT 1 08157 (FAA)

DEPARTURE PROCEDURE: **Rwy 1**, use RICHFIELD (RNAV) DEPARTURE. **Rwy 19**, use HAMET (RNAV) DEPARTURE.

30 JAN 2020 to 27 FEB 2020

30 JAN 2020 to 27 FEB 2020

TAKEOFF MINIMUMS, (OBSTACLE) DEPARTURE PROCEDURES, AND DIVERSE VECTOR AREA (RADAR VECTORS)

20030

SW-4

TAKEOFF MINIMUMS, (OBSTACLE) DEPARTURE PROCEDURES, AND DIVERSE VECTOR AREA (RADAR VECTORS)

ROOSEVELT, UT

ROOSEVELT MUNI (74V)

TAKEOFF MINIMUMS AND (OBSTACLE)
DEPARTURE PROCEDURES

AMDT 2 16315 (FAA)

TAKEOFF MINIMUMS: **Rwy 7**, std. **Rwy 25**, std. w/min. climb of 300' per NM to 6100 or 1300-3 for VCOA. DEPARTURE PROCEDURE: **Rwy 7**, turn right. **Rwy 25**, turn left. **All aircraft**, climb direct MTU VOR/DME. Aircraft departing MTU VOR/DME R-040 CW R-150, Climb on course. All others continue climb in MTU holding pattern (NE, right turns, 213° inbound) to cross MTU VOR/DME; R-151 CW R-290 at or above 8000; R-291 CW R-039 at or above 10000. Then climb on course.

VCOA: **Rwy 25**, obtain ATC approval for VCOA when requesting IFR clearance. Climb in visual conditions to cross Roosevelt Muni airport southbound at or above 6300 on MTU R-010 to MTU VOR/DME, continue climb in hold (NE, right turns, 213° inbound) to MEA for direction of flight.

TAKEOFF OBSTACLE NOTES: **Rwy 7**, NAVAID 38' from DER, 110' left of centerline, 5' AGL/5111' MSL. Vehicles on road beginning 76' from DER, 250' left of centerline, up to 15' AGL/5122' MSL. **Rwy 25**, NAVAID 39' from DER, 112' left of centerline, 2' AGL/5177' MSL. Tree 95' from DER, 384' left of centerline, 9' AGL/5179' MSL. Trees beginning 180' from DER, 403' left and right of centerline, up to 22' AGL/5192' MSL. Tree, building, vehicle on road, pole beginning 5668' from DER, 1461' right of centerline, up to 45' AGL/5345' MSL. Trees, poles, buildings, vehicle on road beginning 1 NM from DER, 1031' right of centerline, up to 100' AGL/5410' MSL. Tree, vehicle on road, terrain beginning 1.2 NM from DER, 1904' right of centerline, up to 16' AGL/5416' MSL. Poles, tree, vehicle on road beginning 1.3 NM from DER, 1915' right of centerline, up to 56' AGL/5426' MSL. Trees beginning 1.5 NM from DER, 1553' right of centerline, up to 55' AGL/5485' MSL. Trees beginning 1.8 NM from DER, 1871' right of centerline, up to 53' AGL/5493' MSL. Tre 1.9 NM from DER, 1987' right of centerline, 20' AGL/5483' MSL.

SAFFORD, AZ

SAFFORD RGNL (SAD)

TAKEOFF MINIMUMS AND (OBSTACLE)
DEPARTURE PROCEDURES

AMDT 1 10210 (FAA)

TAKEOFF MINIMUMS: **Rwys 8, 26**, NA - Airspace.
DEPARTURE PROCEDURE: **Rwys 12, 30**, use SAFFORD RNAV DEPARTURE.

ST. GEORGE, UT

ST. GEORGE RGNL (SGU)

TAKEOFF MINIMUMS AND (OBSTACLE)
DEPARTURE PROCEDURES

ORIG-A 16147 (FAA)

DEPARTURE PROCEDURE: Use JITKA DEPARTURE.

ST. JOHNS, AZ

ST. JOHNS INDUSTRIAL AIR PARK (SJN)

TAKEOFF MINIMUMS AND (OBSTACLE)
DEPARTURE PROCEDURES

AMDT 1B 16315 (FAA)

TAKEOFF MINIMUMS: **Rwys 3, 32, 14**, std. **Rwy 21**, 700-2¾ or standard w/min. climb of 378' per NM to 6600. DEPARTURE PROCEDURE: **Rwys 3, 32**, climbing right turn. **Rwys 14, 21**, climbing left turn. **All aircraft**, climb direct SJN VORTAC. Aircraft departing SJN VORTAC R-240 CW to R-080 Climb on course. All others continue climb in SIN VORTAC holding pattern (hold NE, right turns, 239° inbound) to cross SJN VORTAC at or above 9000.

TAKEOFF OBSTACLE NOTES: **Rwy 3**, sign 15' from DER, 125' left of centerline, 3' AGL/5736' MSL. **Rwy 14**, vehicle on road 1' from DER, 113' right of centerline, up to 15' AGL/5750' MSL. Tree, fence, post, obstruction light on building, ant on building and transmission line tower beginning 27' from DER, 94' left of centerline, up to 5780' MSL. Airport beacon lighted, tower, pole, windsock, building, obstruction light on building, light pole, transmission light tower and tree, beginning 58' from DER, 88' right of centerline, up to 57' AGL/5793' MSL. Vehicle on road 67' from DER, crossing centerline, 15' AGL/5752' MSL. Trees and poles beginning 515' from DER, 73' left of centerline, up to 76' AGL/5784' MSL. Vehicle on road 559' from DER, crossing centerline, 15' AGL/5762' MSL. **Rwy 32**, vehicle on road and generator utility beginning 34' from DER, 3' right of centerline, up to 15' AGL/5745' MSL. Generator utility 40' from DER, 79' left of centerline, 10' AGL/5736' MSL. Vehicle on road 102' from DER, crossing centerline, 15' AGL/5741' MSL. Buildings beginning 201' from DER, 327' left of centerline up to 5743' MSL. Pole 307' from DER, 570' left of centerline, up to 30' AGL/5757' MSL. **Rwy 21**, tree and fence 15' from DER, 248' left of centerline, 5767' MSL. Trees and buildings beginning 23' from DER, 276' right of centerline, up to 5798' MSL. Trees beginning 92' from DER, 27' left of centerline, up to 5778' MSL. Fence beginning 208' from DER, crossing centerline, up to 5738' MSL. Vehicles on road 265' from DER, crossing centerline, 15' AGL/5756' MSL. Trees, buildings, signs and poles beginning 285' from DER, 2' right of centerline, up to 5781' MSL. Trees, buildings, signs and poles beginning 597' from DER, 3' left of centerline, up to 5780' MSL. Trees, buildings and poles beginning 808' from DER, 10' right of centerline, up to 5833' MSL. Trees, buildings and poles beginning 867' from DER, 3' left of centerline, up to 5788' MSL. Trees beginning 1257' from DER, 20' left of centerline, up to 5816' MSL. Buildings, poles and trees beginning 3704' from DER, 662' right of centerline, up to 5914' MSL. Poles beginning 3491' from DER, 1293' left of centerline, up to 5872' MSL. Communications tower 2.2 NM from DER, 1415' left of centerline, 199' AGL/6356' MSL. Pole 2.2 NM from DER, 1467' left of centerline, 31' AGL/6133' MSL.

30 JAN 2020 to 27 FEB 2020

30 JAN 2020 to 27 FEB 2020

TAKEOFF MINIMUMS, (OBSTACLE) DEPARTURE PROCEDURES, AND DIVERSE VECTOR AREA (RADAR VECTORS)

TAKEOFF MINIMUMS, (OBSTACLE) DEPARTURE PROCEDURES, AND DIVERSE VECTOR AREA (RADAR VECTORS)

20030

SALT LAKE CITY, UT

SALT LAKE CITY INTL (SLC)

TAKEOFF MINIMUMS AND (OBSTACLE)
DEPARTURE PROCEDURES
AMDT 11A 17229 (FAA)

TAKEOFF MINIMUMS: **Rwy 32**, 400-1 or std. w/ min. climb of 498' per NM to 4700.

DEPARTURE PROCEDURE: **Rwy 14**, climb to 10000 on heading 192° and FFU R-341 to FFU VORTAC before proceeding on course. **Rwy 16R**, climb to 10000 on heading 164° and FFU R-341 to FFU VORTAC before proceeding on course. **Rwy 16L**, climb to 10000 on heading 164° and FFU R-341 to FFU VORTAC before proceeding on course. **Rwy 17**, climb to 10000 on heading 169° and FFU R-341 to FFU VORTAC before proceeding on course. **Rwy 32**, climb to 9000 on heading 002° and OGD R-153 to OGD VORTAC before proceeding on course. **Rwy 34L**, climb to 9000 on heading 344° and OGD R-153 to OGD VORTAC before proceeding on course. **Rwy 34R**, climb to 9000 on heading 344° and OGD R-153 to OGD VORTAC before proceeding on course. **Rwy 35**, climb to 9000 on heading 339° and OGD R-153 to OGD VORTAC before proceeding on course.

TAKEOFF OBSTACLE NOTES: **Rwy 14**, antenna 1349' from DER, 544' left of centerline, 42' AGL/4263' MSL. **Rwy 16L**, vehicle on road 124' from DER, 14' right of centerline, 15' AGL/4239' MSL. Light pole 988' from DER, 726' right of centerline, 34' AGL/4254' MSL. Pole 1024' from DER, 689' right of centerline, 34' AGL/4254' MSL. **Rwy 17**, vehicles on road beginning 335' from DER, on centerline, up to 17' AGL/4241' MSL. **Rwy 32**, ATC tower 5,266' from DER, 1767' left of centerline, 335' AGL/4549' MSL. Crane 5196' from DER, 1630' left of centerline, 240' AGL/4463' MSL. Flag on OL 5,153' from DER, 1619' left of centerline, 249' AGL/4463' MSL. Aircraft beginning 969' from DER, 722' left of centerline, up to 79' AGL/4306' MSL. **Rwy 34R**, post 13' from DER, 349' right of centerline, 3' AGL/4227' MSL. **Rwy 35**, post 56' from DER, 249' left of centerline, 2' AGL/4220' MSL.

DIVERSE VECTOR AREA (RADAR VECTORS)
AMDT 1 17257

Rwy 14, heading as assigned by ATC. **Rwy 16L**, heading as assigned by ATC. **Rwy 16R**, heading as assigned by ATC. **Rwy 17**, heading as assigned by ATC. **Rwy 34L**, heading as assigned by ATC. **Rwy 34R**, heading as assigned by ATC. **Rwy 35**, heading as assigned by ATC.

SALT LAKE CITY, UT (CON'T)

SOUTH VALLEY RGNL (U42)

TAKEOFF MINIMUMS AND (OBSTACLE)
DEPARTURE PROCEDURES
AMDT 6 18032 (FAA)

TAKEOFF MINIMUMS: **Rwy 16**, std. w/ min. climb of 300' per NM to 10700. **Rwy 34**, std. w/ min. climb of 330' per NM to 9000.

DEPARTURE PROCEDURE: **Rwy 16**, climbing left turn to 10700 on FFU VORTAC R-341 to FFU VORTAC, continue climb in FFU VORTAC holding pattern (hold S, right turn, 008° inbound) to cross FFU VORTAC at or above MEA/MCA for route of flight. **Rwy 34**, climbing right turn to 9000 on TCH VORTAC R-161 to TCH VORTAC, continue climb in TCH VORTAC holding pattern (hold NW, right turn, 120° inbound) to cross TCH VORTAC at or above MEA/MCA for route of flight.

TAKEOFF OBSTACLE NOTES: **Rwy 16**, NAVAID abeam DER, 99' right of centerline, 4602' MSL. Terrain, sign beginning 34' from DER, 207' right of centerline, up to 4606' MSL. Vehicle on road 83' from DER, 252' left of centerline, 4611' MSL. Vehicle on road 171' from DER, 132' left of centerline, 4614' MSL. Pole 551' from DER, 631' right of centerline, 15' AGL/4626' MSL. Vehicle on road, vegetation beginning 672' from DER, 490' right of centerline, up to 4629' MSL. Pole 1000' from DER, 638' right of centerline, 4638' MSL. Pole 1008' from DER, 466' right of centerline, 31' AGL/4640' MSL. Pole beginning 1092' from DER, 687' right of centerline, up to 31' AGL/4644' MSL. **Rwy 34**, NAVAID 10' from DER, 96' left of centerline, 4606' MSL. NAVAID 10' from DER, 94' right of centerline, 4604' MSL. Terrain 58' from DER, 424' left of centerline, 4608' MSL.

SCOTTSDALE, AZ

SCOTTSDALE (SDL)

TAKEOFF MINIMUMS AND (OBSTACLE)
DEPARTURE PROCEDURES
AMDT 9 18144 (FAA)

DEPARTURE PROCEDURE: Use MARICOPA DEPARTURE.

TAKEOFF OBSTACLE NOTES: **Rwy 3**, multiple light standards beginning 63' from DER, 445' left of centerline, up to 44' AGL/1,554 MSL. Hoist on dike 878' from DER, 735' left of centerline, 51' AGL/1,561' MSL. Dike beginning 1,066' from DER, 316' left of centerline, 38' AGL/1548' MSL. Day marker on dike, 1,230' from DER, 5' left of centerline, 39' AGL/1,549' MSL. Tree 765' from DER, 115' left of centerline, 22' AGL/1,532' MSL. Road beginning 647' from DER, 296' left of centerline, 19' AGL/1,529' MSL. Fence beginning 5' from DER, 338' right of centerline, 6' AGL/1,511' MSL. Light standard 1,013' from DER, 430' right of centerline, 44' AGL/1,552' MSL. **Rwy 21**, trees 1,072' from DER, 426' right of centerline, 53' AGL/1,497' MSL. Building 316' from DER, 537' right of centerline, 23' AGL/1,467' MSL. Tree 2,087' from DER, 418' left of centerline, 61' AGL/1,505' MSL. Tree 1,432' from DER, 438' right of centerline, 38' AGL/1,482' MSL. Tree 2,234' from DER, 559' left of centerline, 58' AGL/1,502' MSL.

DIVERSE VECTOR AREA (RADAR VECTORS)
AMDT 1 14317 (FAA)

Rwy 3, heading as assigned by ATC; requires minimum climb of 445' per NM to 4600. **Rwy 21**, heading as assigned by ATC; do not exceed 210 KTS until established on assigned heading.

30 JAN 2020 to 27 FEB 2020

30 JAN 2020 to 27 FEB 2020

TAKEOFF MINIMUMS, (OBSTACLE) DEPARTURE PROCEDURES, AND DIVERSE VECTOR AREA (RADAR VECTORS)

20030

SW-4

TAKEOFF MINIMUMS, (OBSTACLE) DEPARTURE PROCEDURES, AND DIVERSE VECTOR AREA (RADAR VECTORS)

20030

SEDONA, AZ

SEDONA (SEZ)

TAKEOFF MINIMUMS AND (OBSTACLE)
DEPARTURE PROCEDURES
AMDT 1 08101 (FAA)

TAKEOFF MINIMUMS: **Rwy 3**, NA- Obstacles.
DEPARTURE PROCEDURE: **Rwy 21**, Use OATES
RNAV DEPARTURE.

SHOW LOW, AZ

SHOW LOW RGNL (SOW)

TAKEOFF MINIMUMS AND (OBSTACLE)
DEPARTURE PROCEDURES
AMDT 2 18200 (FAA)

DEPARTURE PROCEDURE: **Rwy 4**, climbing left turn heading 360° to 7800 before proceeding on course.
Rwy 7, climbing left turn heading 360° to 8100 before proceeding on course. **Rwy 22**, climbing right turn heading 255° to 7700 before proceeding on course. **Rwy 25**, climb on heading 246° to 7600 before proceeding on course.

TAKEOFF OBSTACLE NOTES: **Rwy 4**, sign, building, fence, pole beginning 44' from DER, 183' right of centerline, up to 6' AGL/6406' MSL. Tree 88' from DER, 488' left of centerline, 6411' MSL. Trees beginning 185' from DER, 428' left of centerline, up to 6417' MSL. Pole 240' from DER, 222' right of centerline, 16' AGL/6411' MSL. **Rwy 7**, general utility 39' from DER, 92' right of centerline, 19' AGL/6402' MSL. General utility 40' from DER, 88' left of centerline, 20' AGL/6402' MSL. **Rwy 22**, tree 94' from DER, 197' left of centerline, 6424' MSL. Trees beginning 133' from DER, 87' right of centerline, up to 6420' MSL. Pole 397' from DER, 141' left of centerline, 23' AGL/6426' MSL. Pole 469' from DER, 166' left of centerline, 27' AGL/6430' MSL. Building 677' from DER, 423' left of centerline, 24' AGL/6433' MSL. Elevator, tank, pole beginning 1191' from DER, 5' left of centerline, up to 63' AGL/6496' MSL. **Rwy 25**, pole 10' from DER, 29' right of centerline, 18' AGL/6401' MSL. Pole 640' from DER, 310' right of centerline, 6418' MSL. Pole 644' from DER, 307' right of centerline, 37' AGL/6419' MSL. Pole beginning 704' from DER, 677' left of centerline, up to 53' AGL/6437' MSL. Pole, catenary beginning 726' from DER, 3' left of centerline, up to 54' AGL/6438' MSL. Pole 760' from DER, 158' right of centerline, 47' AGL/6430' MSL. Pole 763' from DER, 159' right of centerline, 49' AGL/6432' MSL. Pole, catenary beginning 764' from DER, 77' right of centerline, up to 54' AGL/6437' MSL. Pole beginning 842' from DER, 317' right of centerline, up to 57' AGL/6438' MSL.

SILVER SPRINGS, NV

SILVER SPRINGS (SPZ)

TAKEOFF MINIMUMS AND (OBSTACLE)
DEPARTURE PROCEDURES
ORIG 17117 (FAA)

TAKEOFF MINIMUMS: **Rwy 24**, 2800-3 for VCOA. DEPARTURE PROCEDURE: **Rwy 6**, climb heading 056° to intercept HZN R-220 to 8000. Continue climb in HZN VORTAC holding pattern (hold NE, RT, 211° inbound) to cross HZN VORTAC at or above MEA for route of flight. VCOA: **Rwy 24**, obtain ATC approval for VCOA when requesting IFR clearance. Climb in visual conditions to cross Silver Springs Airport at or above 6900, then proceed on HZN VORTAC R-220 to 8000 to HZN VORTAC.

TAKEOFF OBSTACLE NOTES: **Rwy 6**, windsock and sign beginning 29' from DER, 204' left of centerline, up to 23' AGL/4235' MSL. **Rwy 24**, terrain 52' from DER, 495' right of centerline, 4267' MSL. Pole 2258' from DER, 938' right of centerline, 33' AGL/4324' MSL. Pole 2277' from DER, 883' right of centerline, 38' AGL/4328' MSL.

SPANISH FORK, UT

SPANISH FORK ARPT SPRINGVILLE- WOODHOUSE FIELD (SPK)

TAKEOFF MINIMUMS AND (OBSTACLE)
DEPARTURE PROCEDURES
ORIG 19003 (FAA)

DEPARTURE PROCEDURE: Use SPANISH FORK DEPARTURE.

TAKEOFF OBSTACLE NOTES: **Rwy 12**, lighting 10' from DER, 29' left of centerline, 2' AGL/4530' MSL. Fence 60' from DER, 481' right of centerline, 4535' MSL. Building 198' from DER, 449' right of centerline, 12' AGL/4541' MSL. Sign, building beginning 297' from DER, 461' right of centerline, up to 4552' MSL. Building 1023' from DER, 600' right of centerline, 4555' MSL. Tree 1031' from DER, 651' left of centerline, 4563' MSL. Tree, building beginning 1140' from DER, 503' left of centerline, up to 4565' MSL. Building 1173' from DER, 560' right of centerline, 4559' MSL. Building 1434' from DER, 855' right of centerline, 4572' MSL. Tree 1514' from DER, 742' left of centerline, 4568' MSL. Pole 1818' from DER, 352' right of centerline, 4576' MSL. Pole beginning 3232' from DER, 1134' right of centerline, up to 4621' MSL. Pole, sign beginning 3499' from DER, 801' left of centerline, up to 106' AGL/4673' MSL. Electrical system 3922' from DER, 628' right of centerline, 4637' MSL. Pole 4450' from DER, 893' right of centerline, 4649' MSL. Pole 4709' from DER, 1365' right of centerline, 4662' MSL. Pole 5162' from DER, 1194' right of centerline, 4664' MSL. Pole 2 NM from DER, 3639' left of centerline, 4853' MSL. **Rwy 30**, lighting 9' from DER, 29' right of centerline, 2' AGL/4525' MSL. Vegetation 36' from DER, 145' right of centerline, 9' AGL/4527' MSL. Tree 750' from DER, 557' left of centerline, 4546' MSL. Pole 1182' from DER, 595' left of centerline, 50' AGL/4570' MSL. Pole beginning 1479' from DER, 268' left of centerline, up to 60' AGL/4579' MSL. Tree 1505' from DER, 550' right of centerline, 49' AGL/4565' MSL.

30 JAN 2020 to 27 FEB 2020

30 JAN 2020 to 27 FEB 2020

TAKEOFF MINIMUMS, (OBSTACLE) DEPARTURE PROCEDURES, AND DIVERSE VECTOR AREA (RADAR VECTORS)

20030

SW-4

TAKEOFF MINIMUMS, (OBSTACLE) DEPARTURE PROCEDURES, AND DIVERSE VECTOR AREA (RADAR VECTORS)

20030

SPRINGERVILLE, AZ

SPRINGERVILLE MUNI (JTC)

TAKEOFF MINIMUMS AND (OBSTACLE)

DEPARTURE PROCEDURES

ORIG 96228 (FAA)

TAKEOFF MINIMUMS: **Rwy 21**, 1000-2 or std. with a min. climb of 360' per NM to 8400.DEPARTURE PROCEDURE: **Rwys 3, 11**, climbing left turn to 8400 via heading 360° before proceeding on course. **Rwys 21, 29**, climbing right turn to 8400 via 360° before proceeding on course.

TAYLOR, AZ

TAYLOR (TYL)

TAKEOFF MINIMUMS AND (OBSTACLE)

DEPARTURE PROCEDURES

AMDT 1 11125 (FAA)

TAKEOFF MINIMUMS: **Rwy 21**, 300-1 or std. w/min. climb of 290' per NM to 6100.DEPARTURE PROCEDURE: **Rwy 3**, climb heading 030° to 8000 before turning on course. **Rwy 21**, climb heading 210° to 8000 before turning on course.TAKEOFF OBSTACLE NOTES: **Rwy 3**, vehicles on road beginning 1823' from DER, 698' right of centerline, up to 17' AGL/5726' MSL. Power lines crossing departure course 1000' from DER. **Rwy 21**, trees beginning 1132' from DER, 316' right of centerline, up to 12' AGL/5871' MSL.

TONOPAH TEST RANGE (KTNX)

TONOPAH, NV

TAKEOFF MINIMUMS AND (OBSTACLE)

DEPARTURE PROCEDURES

AMDT 1 18200

DEPARTURE PROCEDURE: **Rwy 14**, 1000-3 with min. climb of 320 ft/NM to 10,700 or 2700-3 for Climb in Visual Conditions. Climb on a heading between 325° CW to 155° from DER or Climb in Visual Conditions to cross KZ - KTNX airport at or above 8100 MSL before proceeding on course. **Rwy 32**, 1000-3 with min. climb of 260 ft/NM to 5900 or 2700-3 for Climb in Visual Conditions. Climb on a heading between 295° CW to 005° from DER or Climb in Visual Conditions to cross KZ-KTNX airport at or above 8100 MSL before proceeding on course.TAKEOFF OBSTACLE NOTES: **Rwy 14**, terrain 1204' from DER, 823' right of cntrln, 5582' MSL. Terrain 63' from DER, 517' right of cntrln, 5565' MSL. Terrain 46' from DER, 480' right of cntrln, 5564' MSL. Terrain 0' from DER, 353' right of cntrln, 5561' MSL. Terrain 62' from DER, 200' right of cntrln, 5558' MSL. Terrain 14' from DER, 292' right of cntrln, 5561' MSL. Terrain 0' from DER, 287' right of cntrln, 5561' MSL. Terrain 0' from DER, 222' right of cntrln, 5559' MSL. Surveyed terrain 215' from DER, 427' right of cntrln, 5560' MSL. **Rwy 32**, terrain 0' from DER, 500' left of cntrln, 5476' MSL. Terrain 19' from DER, 465' left of cntrln, 5476' MSL. Terrain 110' from DER, 529' left of cntrln, 5476' MSL.

TOOELE, UT

BOLINDER FIELD-TOOELE VALLEY (TVY)

TAKEOFF MINIMUMS AND (OBSTACLE)

DEPARTURE PROCEDURES

AMDT 3 13234 (FAA)

TAKEOFF MINIMUMS: **Rwy 17**, std. w/min. climb of 348' per NM to 9000 or 5600-3 for climb in visual conditions. **Rwy 35**, std. w/min. climb of 380' per NM to 9000 or 5600-3 for climb in visual conditions.DEPARTURE PROCEDURE: **Rwy 17**, climbing right turn to 9000 on heading 337° and OGD VORTAC R-197 to STACO INT, or for climb in visual conditions: cross Bolinder Field-Tooele Valley airport at or above 9800' MSL before proceeding on course. When executing VCOA, notify ATC prior to departure. **Rwy 35**, climbing left turn to 9000 on heading 300° and OGD VORTAC R-197 to STACO INT, or for climb in visual conditions: cross Bolinder Field-Tooele Valley airport at or above 9800' MSL before proceeding on course. When executing VCOA, notify ATC prior to departure.TAKEOFF OBSTACLE NOTES: **Rwy 17**, tree 230' from DER, 255' right of centerline, 35' AGL/4335' MSL. Tree 342' from DER, 363' right of centerline, 35' AGL/4360' MSL. Trees beginning 601' from DER, 486' right of centerline, up to 35' AGL/4399' MSL. Pole 1000' from DER, 409' left of centerline, 42' AGL/4363' MSL. Pole 1092' from DER, 118' right of centerline, 42' AGL/4363' MSL. Tree 1369' from DER, 393' right of centerline, 35' AGL/4381' MSL. Tree 2018' from DER, 257' right of centerline, 35' AGL/4384' MSL.

TUCSON, AZ

RYAN FIELD (RYN)

TAKEOFF MINIMUMS AND (OBSTACLE)

DEPARTURE PROCEDURES

AMDT 3 10210 (FAA)

TAKEOFF MINIMUMS: **Rwys 6L, 15, 24R, 33**, NA, ATC. DEPARTURE PROCEDURE: **Rwys 6R, 24L**, use ALMON DEPARTURE.

TONOPAH, NV

TONOPAH (TPH)

TAKEOFF MINIMUMS AND (OBSTACLE)

DEPARTURE PROCEDURES

AMDT 2 17229 (FAA)

TAKEOFF MINIMUMS: **Rwys 11, 29**, NA - ATC. **Rwy 15**, std. with a min. climb of 320' per NM to 9100 or 2500-3 for VCOA. **Rwy 33**, std. with a min. climb of 352' per NM to 9100 or 2500-3 for VCOA.DEPARTURE PROCEDURE: **Rwy 15**, climbing left turn direct TONOPAH (TPH) VORTAC thence... **Rwy 33**, climbing right turn direct TONOPAH (TPH) VORTAC thence...

...continue climb in TPH holding pattern (NE, RT, 246° inbound) to cross TPH VORTAC at or above 9300 before proceeding on course.

VCOA: **Rwy 15, 33**, obtain ATC approval for VCOA when requesting IFR clearance. Climb in visual conditions to cross Tonopah airport at or above 7800 direct TONOPAH VORTAC, continue climb in TPH holding pattern (NE, RT, 246° inbound) to cross TPH VORTAC at or above 9300 before proceeding on course.TAKEOFF OBSTACLE NOTES: **Rwy 15**, transmission line tower 515' from DER, 473' left of centerline, 23' AGL/5418' MSL. **Rwy 33**, fence beginning 173' from DER, 401' right of centerline, 6' AGL/5438' MSL.

30 JAN 2020 to 27 FEB 2020

30 JAN 2020 to 27 FEB 2020

TAKEOFF MINIMUMS, (OBSTACLE) DEPARTURE PROCEDURES, AND DIVERSE VECTOR AREA (RADAR VECTORS)

20030

SW-4

TAKEOFF MINIMUMS, (OBSTACLE) DEPARTURE PROCEDURES, AND DIVERSE VECTOR AREA (RADAR VECTORS)

TUCSON, AZ (CON'T)

TUCSON INTL (TUS)

TAKEOFF MINIMUMS AND (OBSTACLE)

DEPARTURE PROCEDURES

AMDT 5 12208 (FAA)

TAKEOFF MINIMUMS: **Rwy 3**, 300-2 or std. w/min. climb of 228' per NM to 3000.

DEPARTURE PROCEDURE: **Rwys 3, 29L/R**, climbing right turn direct to TUS VORTAC...

Rwy 21, climbing left turn direct to TUS VORTAC ...
Rwys 11L/R, climb heading 123° to 4000 then climbing left turn direct TUS VORTAC ...

... Climb in TUS VORTAC holding pattern (hold NW, right turns, 128° inbound) to 9000 before proceeding on course.

TAKEOFF OBSTACLE NOTES: **Rwy 3**, multiple trees and sign beginning 1385' from DER, 127' left of centerline, up to 41' AGL/2611' MSL. Tree 2062' from DER, 332' right of centerline, 46' AGL/2626' MSL.

Rwy 11L, vents 115' from DER, 147' left and right of centerline, 6' AGL/2646' MSL. Multiple bushes beginning 449' from DER, 395' left of centerline, up to 24' AGL/2674' MSL. Multiple bushes beginning 188' from DER, 328' right of centerline, up to 13' AGL/2663' MSL. **Rwy 11R**, tree 584' from DER, 176' right of centerline, 25' AGL/2645' MSL. **Rwy 21**, bush 104' from DER, 256' left of centerline, 12' AGL/2572' MSL. RR 248' from DER, right to left of centerline, 23' AGL/2582' MSL. Bush 549' from DER, 384' left of centerline, 33' AGL/2583' MSL. Tree 701' from DER, 144' left of centerline, 37' AGL/2587' MSL. Pole 950' from DER, 166' left of centerline, 38' AGL/2588' MSL. Pole 1028' from DER, 89' left of centerline, 46' AGL/2599' MSL. Pole 1298' from DER, 594' left of centerline, 66' AGL/2616' MSL. Electrical system 1445' from DER, 319' left of centerline, 55' AGL/2605' MSL. Bush 141' from DER, 330' right of centerline, 24' AGL/2574' MSL. Bush 454' from DER, 138' right of centerline, 26' AGL/2576' MSL. Electrical system 1176' from DER, 37' right of centerline, 48' AGL/2598' MSL. **Rwy 29L**, aircraft on ramp 2723' from DER, 348' left of centerline, up to 30' AGL/2680' MSL. **Rwy 29R**, aircraft on ramp 2779' from DER, 1056' left of centerline, up to 30' AGL/2680' MSL.

DIVERSE VECTOR AREA (RADAR VECTORS)

ORIG 19059(FAA)

Rwy 3, heading as assigned by ATC; requires minimum climb of 228' per NM to 3000. **Rwys 11L/R, 21**, heading as assigned by ATC. **Rwy 29L**, heading as assigned by ATC; requires minimum climb of 300' per NM to 4500. **Rwy 29R**, heading as assigned by ATC; requires minimum climb of 300' per NM to 4400.

VERNAL, UT

VERNAL RGNL (VEL)

TAKEOFF MINIMUMS AND (OBSTACLE)

DEPARTURE PROCEDURES

AMDT 2 17341 (FAA)

TAKEOFF MINIMUMS: **Rwy 17**, std. w /min. climb of 210' per NM to 6000, or alternatively with std. takeoff minimums and a normal 200' per NM climb gradient, takeoff must occur no later than 1800' prior to DER or 2200-3 for VCOA. **Rwy 35**, std. w /min. climb of 410' per NM to 7700 or 2200-3 for VCOA.

DEPARTURE PROCEDURE: **Rwy 17**, climbing left turn direct VEL VOR/DME, thence ... **Rwy 35**, climbing right turn direct VEL VOR/DME, thence ...
... on VEL VOR/DME R-142 to ENSEN INT/VEL 9.7 DME and hold (hold SE, right turn, 322° inbound). Continue Climb-in-hold to the MEA/MCA for route of flight.

VCOA: **Rwys 17, 35**, obtain ATC approval for VCOA when requesting IFR clearance. Climb in visual conditions to cross Vernal RGNL Airport at or above 7300, then continue climb on VEL VOR/DME R-142 until reaching the MEA/MCA for route of flight.

TAKEOFF OBSTACLE NOTES: **Rwy 17**, terrain beginning 19' from DER, 140' right of centerline, up to 5290' MSL. Terrain and agricultural equipment beginning 118' from DER, 15' left of centerline, up to 6' AGL/5284' MSL. Tree 1333' from DER, 295' left of centerline, 5315' MSL. Tree 1378' from DER, 221' left of centerline, 5317' MSL. Tree 1456' from DER, 112' left of centerline, 5318' MSL. Tree 1498' from DER, 32' left of centerline, 5320' MSL. Poles beginning 1948' from DER, 46' right of centerline, up to 35' AGL/5334' MSL. Trees beginning 2411' from DER, 19' left of centerline, up to 5370' MSL. Tree 2439' from DER, 296' right of centerline, 5339' MSL. Tree 2468' from DER, 288' right of centerline, 5341' MSL. Trees beginning 2497' from DER, 290' right of centerline, up to 5344' MSL. Trees beginning 2511' from DER, 105' left of centerline, up to 5374' MSL. Tree 2534' from DER, 361' right of centerline, 5355' MSL. Tree 2553' from DER, 355' right of centerline, 5362' MSL. Trees beginning 2573' from DER, 323' right of centerline, up to 5370' MSL. Trees beginning 4620' from DER, 71' left of centerline, up to 5397' MSL. Tree 4749' from DER, 184' right of centerline, 5401' MSL. Tree 4895' from DER, 65' left of centerline, 5403' MSL. **Rwy 35**, pole 178' from DER, 153' left of centerline, 5290' MSL. Tree and pole beginning 934' from DER, 625' right of centerline, up to 5302' MSL.

WENDOVER, UT

WENDOVER (ENV)

TAKEOFF MINIMUMS AND (OBSTACLE)

DEPARTURE PROCEDURES

AMDT 7 16091 (FAA)

TAKEOFF MINIMUMS: **Rwy 26**, std. w/min. climb of 300' per NM to 5900. **Rwy 30**, NA-ATC.

DEPARTURE PROCEDURE: **Rwys 8, 12, 26**, climbing left turn direct BVL VORTAC, thence...
...continue climb in holding pattern (hold NE, right turns, 253° inbound) to cross BVL VORTAC at/above MEA for route of flight.

TAKEOFF OBSTACLE NOTES: **Rwy 12**, bush 92' from DER, 258' left of centerline, 4' AGL/4227' MSL. **Rwy 26**, tree 100' from DER, 500' right of centerline, 11' AGL/4240' MSL. Bush 90' from DER, 278' left of centerline, 4' AGL/4233' MSL.

TAKEOFF MINIMUMS, (OBSTACLE) DEPARTURE PROCEDURES, AND DIVERSE VECTOR AREA (RADAR VECTORS)

**TAKEOFF MINIMUMS, (OBSTACLE) DEPARTURE PROCEDURES, AND
DIVERSE VECTOR AREA (RADAR VECTORS)**

20030

WILLCOX, AZ

COCHISE COUNTY (P33)
TAKEOFF MINIMUMS AND (OBSTACLE)
DEPARTURE PROCEDURES
AMDT 1 13122 (FAA)
TAKEOFF MINIMUMS: Use COCHISE DEPARTURE.

WINDOW ROCK, AZ

WINDOW ROCK (RQE)
TAKEOFF MINIMUMS AND (OBSTACLE)
DEPARTURE PROCEDURES
AMDT 2 19339 (FAA)

TAKEOFF MINIMUMS: **Rwy 3**, 800-3 w/min. climb of 385' per NM to 8100 or std. w/min. climb of 565' per NM to 7700 or 1600-3 for VCOA. **Rwy 21**, std. w/min. climb of 285' per NM to 8100 or 1600-3 for VCOA. DEPARTURE PROCEDURE: **Rwy 3**, climb on heading 025° to 7500, then right turn to intercept GUP VORTAC R-321 to GUP VORTAC before proceeding on course. **Rwy 21**, climb on heading 205° to 7400 then left turn direct GUP VORTAC before proceeding on course.

VCOA: **Rwys 3, 21**, obtain ATC approval for VCOA when requesting IFR clearance. Climb in visual conditions to cross Window Rock Airport at or above 8200 before proceeding on course.

TAKEOFF OBSTACLE NOTES: **Rwy 3**, vegetation beginning 32' from DER, 73' left of centerline, up to 6745' MSL. Building 416' from DER, 609' right of centerline, 19' AGL/6766' MSL. Poles beginning 477' from DER, 344' right of centerline, up to 33' AGL/6772' MSL. Tree, pole beginning 1336' from DER, 114' left of centerline, up to 6796' MSL. Sign 1380' from DER, 109' right of centerline, 29' AGL/6777' MSL. Pole 1448' from DER, 291' right of centerline, 39' AGL/6788' MSL. Tree 1586' from DER, 392' left of centerline, 6806' MSL. Sign, pole beginning 1774' from DER, 225' right of centerline, up to 52' AGL/6805' MSL. Pole 1868' from DER, 746' left of centerline, 38' AGL/6823' MSL. Pole 3038' from DER, 91' right of centerline, 40' AGL/6824' MSL. Pole 3356' from DER, 457' left of centerline, 31' AGL/6840' MSL. Tree 3532' from DER, 613' left of centerline, 6850' MSL. Tree 3801' from DER, 682' left of centerline, 6871' MSL. Vertical structure, poles beginning 3832' from DER, 57' right of centerline, up to 6926' MSL. Pole 4044' from DER, 310' left of centerline, 44' AGL/6874' MSL. Tree 4616' from DER, 625' left of centerline, 6888' MSL. Vertical structure 5938' from DER, 147' right of centerline, 7024' MSL. Pole, vertical structures, towers beginning 1 NM from DER, 59' left of centerline, up to 6' AGL/7083' MSL. Tower, tree beginning 1.1 NM from DER, 102' right of centerline, up to 103' AGL/7096' MSL. Trees beginning 1.3 NM from DER, 2063' right of centerline, up to 50' AGL/7309' MSL. Vertical structures beginning 1.4 NM from DER, 1852' left of centerline, up to 7127' MSL. Trees beginning 1.4 NM from DER, 121' right of centerline, up to 50' AGL/7369' MSL. Vertical structure, tree beginning 1.5 NM from DER, 626' left of centerline, up to 50' AGL/7139' MSL. Trees beginning 1.6 NM from DER, 875' right of centerline, up to 50' AGL/7375' MSL. Tree 1.8 NM from DER, 357' left of centerline, 50' AGL/7351' MSL. Tree 1.9 NM from DER, 77' left of centerline, 50' AGL/7369' MSL. Tree 2.1 NM from DER, 26' left of centerline, 50' AGL/7429' MSL. Tree 2.4 NM from DER, 2921' right of centerline, 50' AGL/7449' MSL. **Rwy 21**, tree 955' from DER, 382' left of centerline, 6736' MSL. Tree 1018' from DER, 620' left of centerline, 6768' MSL.

WINNEMUCCA, NV

WINNEMUCCA MUNI (WMC)
TAKEOFF MINIMUMS AND (OBSTACLE)
DEPARTURE PROCEDURES
AMDT 2 20030 (FAA)
DEPARTURE PROCEDURE: Use WINNEMUCCA departure.

TAKEOFF OBSTACLE NOTES: **Rwy 2**, tree, NAVAID, beginning 3' from DER, 113' right of centerline, up to 4356' MSL. NAVAID 39' from DER, 118' left of centerline, 8' AGL/4311' MSL. Tree 81' from DER, 402' right of centerline, 4357' MSL. Tree, vehicles on traverse way beginning 98' from DER, 230' right of centerline, up to 4373' MSL. Tree 1177' from DER, 576' left of centerline, 4346' MSL. Tree 1265' from DER, 763' left of centerline, 4349' MSL. Tree 1404' from DER, 647' left of centerline, 4360' MSL. **Rwy 14**, pole 1' from DER, 24' left of centerline, 4304' MSL. NAVAID 40' from DER, 126' left of centerline, 4305' MSL. Vehicles on traverse way, vegetation, trees beginning 58' from DER, 183' left of centerline, up to 40' AGL/4322' MSL. Vehicles on traverse way beginning 343' from DER, 77' left of centerline, up to 4325' MSL. **Rwy 20**, tree 26' from DER, 406' right of centerline, 4306' MSL. Trees beginning 46' from DER, 63' right of centerline, up to 40' AGL/4329' MSL. Pole 65' from DER, 385' left of centerline, 8' AGL/4311' MSL. **Rwy 32**, NAVAID 39' from DER, 123' left of centerline, 3' AGL/4303' MSL. Vegetation 77' from DER, 351' left of centerline, 4304' MSL. Tree 166' from DER, 478' right of centerline, 4306' MSL. Vehicles on traverse way beginning 184' from DER, 405' left of centerline, up to 4314' MSL. Vehicles on traverse way, 273' from DER, 267' right of centerline, up to 4316' MSL.

30 JAN 2020 to 27 FEB 2020

30 JAN 2020 to 27 FEB 2020

**TAKEOFF MINIMUMS, (OBSTACLE) DEPARTURE PROCEDURES, AND
DIVERSE VECTOR AREA (RADAR VECTORS)**

20030

SW-4

**TAKEOFF MINIMUMS, (OBSTACLE) DEPARTURE PROCEDURES, AND
DIVERSE VECTOR AREA (RADAR VECTORS)**

20030

WINSLOW, AZ

WINSLOW-LINDBERGH RGNL (INW)
TAKEOFF MINIMUMS AND (OBSTACLE)
DEPARTURE PROCEDURES
ORIG 14345 (FAA)

DEPARTURE PROCEDURE: **Rwy 22**, climb to 6000,
then right turn direct INW VORTAC and hold, thence . . .
. . . **Rwy 4**, climb to 6000, then left turn direct INW
VORTAC and hold, thence . . .
Rwys 11, 29, climb to 6000, then direct INW
VORTAC and hold, thence . . .
. . . continue climb-in-hold (hold West, right turns, 068°
inbound) to 8900 before proceeding on course.

TAKEOFF OBSTACLE NOTES: **Rwy 11**, vehicle on
road beginning 389' from DER, 329' right of centerline,
15' AGL/4894' MSL. Trees beginning 120' from DER,
398' right of centerline, 100' AGL/4901' MSL. Tank
3681' from DER, 1304' right of centerline, 129'
AGL/5014' MSL. Grain silo 2901' from DER, 25' right
of centerline, up to 4957' MSL. Obstruction light on
hopper 2908' from DER, 27' right of centerline, up to
4955' MSL. Chimney 2899' from DER, 28' right of
centerline, up to 4953' MSL. Light support structure 13'
from DER, 55' left of centerline, up to 4871' MSL. Light
support structure 13' from DER, 56' right of centerline,
up to 4871' MSL. Vertical point 234' from DER, 14' left
of centerline, up to 4876' MSL. **Rwy 29**, tree 332' from
DER, 589' left of centerline 100' AGL/4915' MSL.
Trees beginning 385' from DER, 124' right of
centerline, 100' AGL/4923' MSL. Vehicle on road
beginning 31' from DER, 389' right of centerline 15'
AGL/4920' MSL. REIL abeam DER, 139' left of
centerline, up to 4904' MSL. Bush 38' from DER, 179'
right of centerline, up to 4903' MSL. Pole 2132' from
DER, 1052' right of centerline, up to 4956' MSL.
Vertical point 241' from DER, 318' right of centerline,
up to 4907' MSL. Ground 71' from DER, 456' left of
centerline, up to 4902' MSL. **Rwy 4**, light 4' from DER,
425' left of centerline, up to 4920' MSL. Obstruction
light on lighted windsock 12' from DER, 424' left of
centerline, up to 4918' MSL. Tree 34' from DER, 263'
left of centerline, 100' AGL/4901' MSL. Tower 2740'
from DER, 1086' left of centerline, up to 4968' MSL.
Ground 42' from DER, 455' left of centerline, up to
4892' MSL. **Rwy 22**, poles beginning 1575' from DER,
360' right of centerline, up to 5010' MSL. Antenna
1867' from DER 360' right of centerline up to 5019'
MSL. Vehicle on road beginning 198' from DER, 12'
right of centerline, 15' AGL/4994' MSL. Vehicle on road
beginning 499' from DER, 93' left of centerline, 15'
AGL/4962' MSL. Tree 1746' from DER, 581' right of
centerline, 100' AGL/4993' MSL. Vertical point 31' from
DER, 479' left of centerline, up to 4946' MSL. Building
525' from DER, 528' right of centerline, up to 4956'
MSL. Light support structures 10' from DER, 54' right
of centerline, up to 4942' MSL.

YUMA MCAS/ YUMA INTL (KNYL)

YUMA, AZ
TAKEOFF MINIMUMS AND (OBSTACLE)
DEPARTURE PROCEDURES
18144

DEPARTURE PROCEDURE: **Rwys 3L, 3R, 17, 21L, 21R,**
26, 35, diverse departures authorized. **Rwy 8**, diverse
departures authorized between 258° CW 058°.

TAKEOFF OBSTACLE NOTES: **Rwy 3L**, tower 5273' from
DER, 1539' left of centerline, 335' MSL. Tower 2689'
from DER, 1232' left of centerline, 62' AGL/299' MSL.
Terrain 500' right of DER, 197' MSL. Terrain 500' left of
DER, 194' MSL. **Rwy 3R**, terrain 500' right of DER, 208'
MSL. **Rwy 17**, antenna 303' from DER, 403' right of
centerline, 190' MSL. Terrain 500' left of DER, 184' MSL.
Rwy 21L, TACAN antenna 705' from DER, 286' left of
centerline, 220' MSL. Par antenna 661' from DER, 295'
right of centerline, 214' MSL. **Rwy 26**, pole 74' from DER,
244' right of centerline, 199' MSL. **Rwy 35**, sign 710' from
DER, 491' right of centerline, 54' AGL/244' MSL. Pole
714' from DER, 544' right of centerline, 119' AGL/231'
MSL. Billboard 747' from DER, 562' right of centerline,
225' MSL. Terrain 500' right of DER, 197' MSL.

30 JAN 2020 to 27 FEB 2020

30 JAN 2020 to 27 FEB 2020

**TAKEOFF MINIMUMS, (OBSTACLE) DEPARTURE PROCEDURES, AND
DIVERSE VECTOR AREA (RADAR VECTORS)**

20030

SW-4