

LOC/DME I-OTH 108.5 Chan 22	APP CRS 046°	Rwy Idg TDZE 16 Apt Elev 17	5320
---	------------------------	---	-------------

COPTER ILS or LOC RWY 5

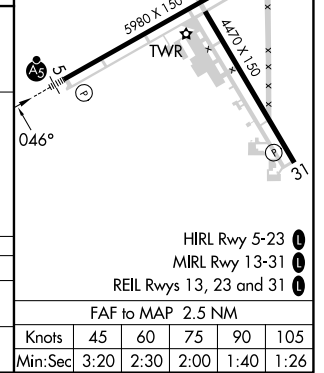
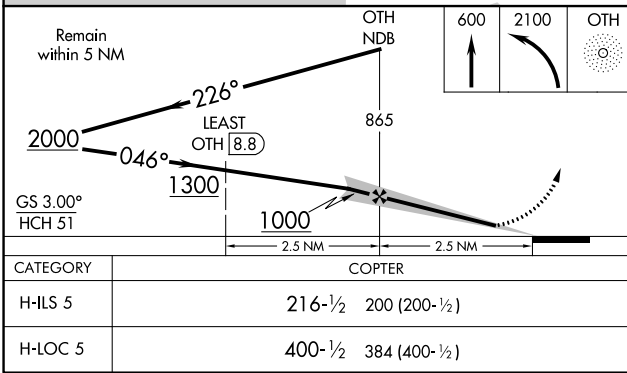
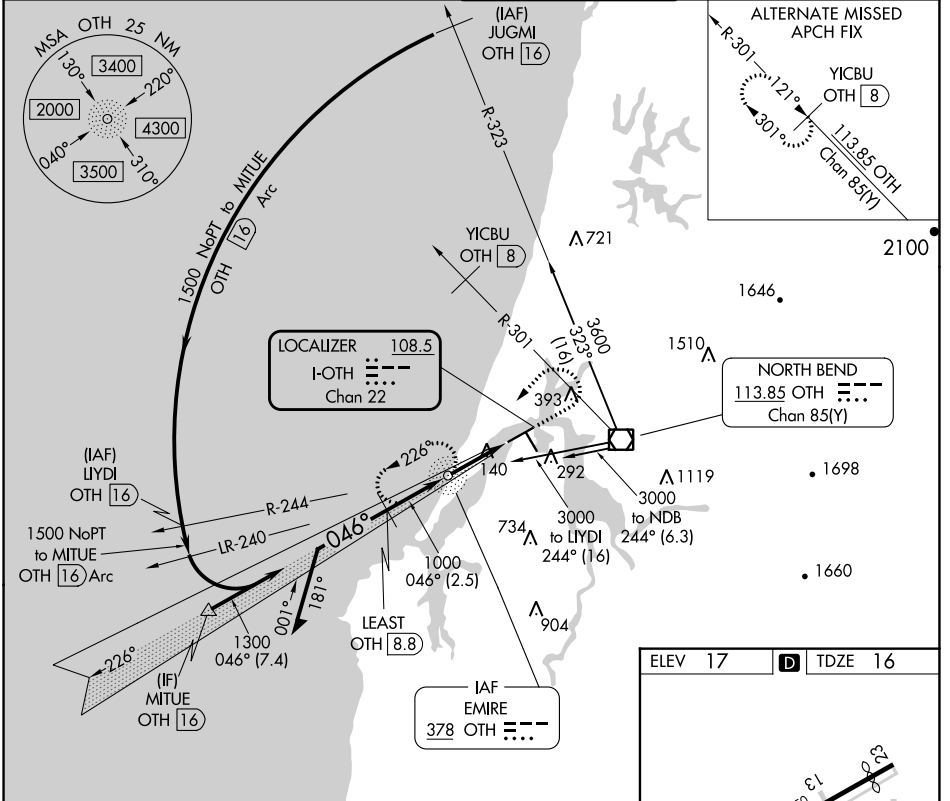
SOUTHWEST OREGON RGNL (OTH)

ADF and DME required.

MALS R 

MISSED APPROACH: Climb to 600 then climbing left turn to 2100 direct OTH NDB and hold, continue climb-in-hold to 2100.

AWOS-3PT 135.075	SEATTLE CENTER 127.55 254.35	NORTH BEND TOWER* 118.45 (CTAF) 0	GND CON 127.1
----------------------------	--	---	-------------------------



NW-1, 22 FEB 2024 to 21 MAR 2024

NW-1, 22 FEB 2024 to 21 MAR 2024