

LOC/DME I-PLJ 111.35 Chan 50 (Y)	APP CRS 273°	Rwy Idg TDZE Apt Elev	8002 8 8
--	------------------------	-----------------------------	-------------------------------------

ILS or LOC RWY 27R

MIAMI-OPA LOCKA EXEC (OPF)

⚠ DME required. When local altimeter setting not received, use Miami Intl altimeter setting and increase all DA/MDA 20 feet and Circling Cat D visibility ¼ SM. For inop MALS, increase S-ILS 27R all Cats visibility to 7/8 mile and S-LOC Cats C/D visibility to 1 1/8 mile. Helicopter visibility reduction below 3/4 SM NA. Autopilot coupled approach NA below 700 feet.

MALS

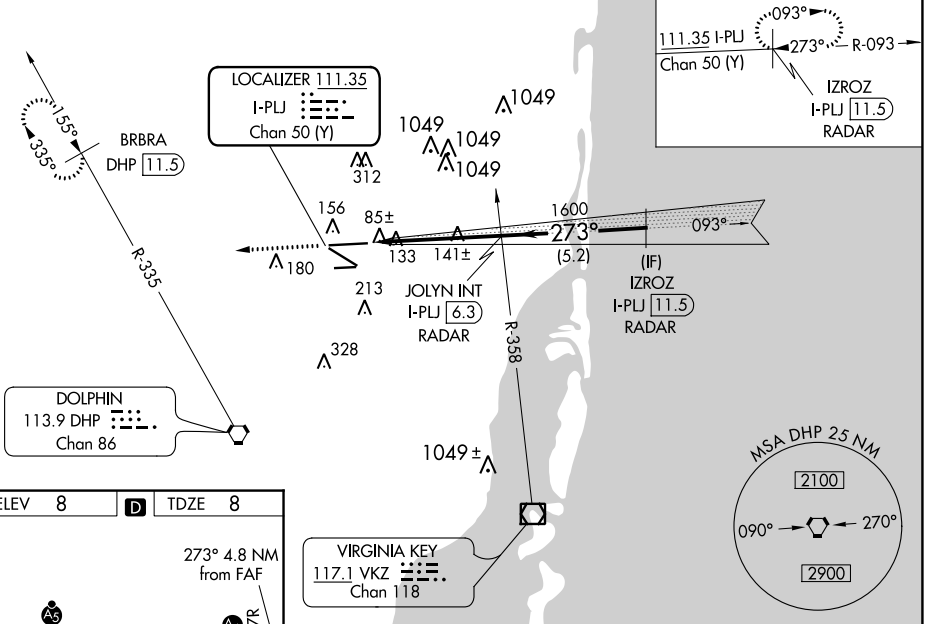


MISSED APPROACH: Climb to 2000 heading 273° and DHP VORTAC R-335 to BRBRA/DHP 11.5 DME and hold.

ATIS 125.9	MIAMI APP CON 128.6 306.975	OPA LOCKA TOWER ★ 134.675 (CTAF) 0	GND CON 120.025	CLNC DEL 119.2	GCO 119.45
----------------------	---------------------------------------	---	---------------------------	--------------------------	----------------------

RADAR REQUIRED

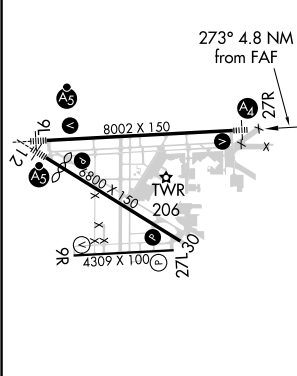
ALTERNATE MISSED APCH FIX



SE-3, 22 FEB 2024 to 21 MAR 2024

SE-3, 22 FEB 2024 to 21 MAR 2024

ELEV 8	D	TDZE 8
---------------	----------	---------------



MIRL Rwy 9R-27L
HIRL Rwys 9L-27R and 12-30 **0**

FAF to MAP 4.8 NM

Knots	60	90	120	150	180
Min:Sec	4:48	3:12	2:24	1:55	1:36

2000	DHP R-335	BRBRA DHP 11.5	VGS1 and ILS glidepath not coincident (VGS1 Angle 3.00/TCH 53).		IZROZ INT I-PLJ 11.5
hdg 273°			JOLYN INT I-PLJ 6.3 RADAR		
*LOC only.	I-PLJ 1.5	*I-PLJ 2.6	1600	1700	GS 3.00° TCH 58
	1.1 NM	3.7 NM	5.2 NM		
CATEGORY	A	B	C	D	
S-ILS 27R	291-3/4 283 (300-3/4)				
S-LOC 27R	420-3/4	412 (500-3/4)	420-1	412 (500-1)	
CIRCLING	540-1	532 (600-1)	620-1 3/4	740-2 1/4	612 (700-1 1/4) 732 (800-2 1/4)