

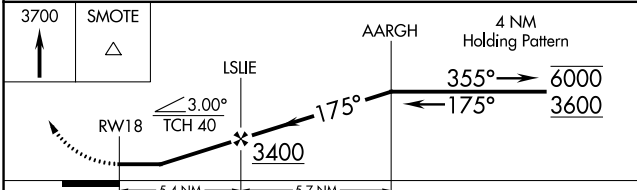
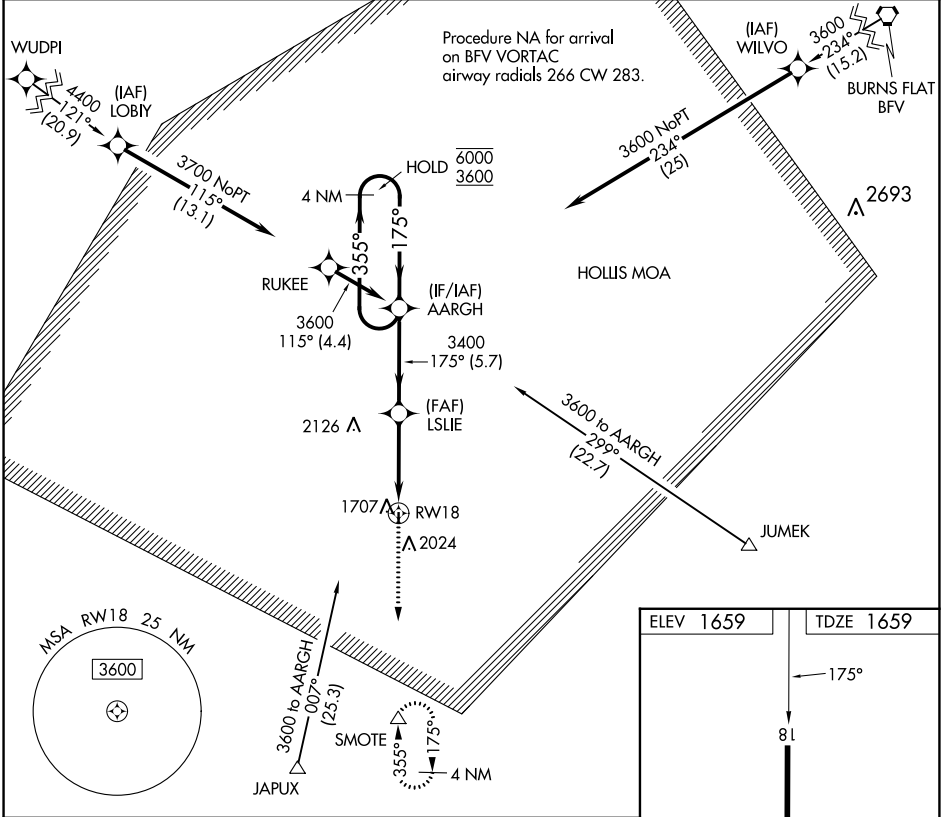
APP CRS	Rwy Idg	3000
175°	TDZE	1659
	Apt Elev	1659

RNAV (GPS) RWY 18

HOLLIS MUNI (O35)

RNP APCH.	<p>▼ Rwy 18 helicopter visibility reduction below 1 SM NA. ▲ Straight-in Rwy 18 and Circling Rwy 18 NA at night. Use Altus/Quartz Mountain Rgnl altimeter setting.</p>	<p>MISSED APPROACH: Climb to 3700 direct SMOTE and hold.</p>

AXS AWOS-3PT	ALTUS APP CON *	CTAF
118.825	125.1 353.7	122.9 0



ELEV 1659	TDZE 1659
<p>MRL Rwy 18-36 0</p>	

CATEGORY	A	B	C	D
LNVA MDA	2400-1 741 (800-1)	2400-1¼ 741 (800-1¼)	NA	
CIRCLING	2400-1 741 (800-1)	2480-1¼ 821 (900-1¼)	NA	

SC-1, 22 FEB 2024 to 21 MAR 2024

SC-1, 22 FEB 2024 to 21 MAR 2024

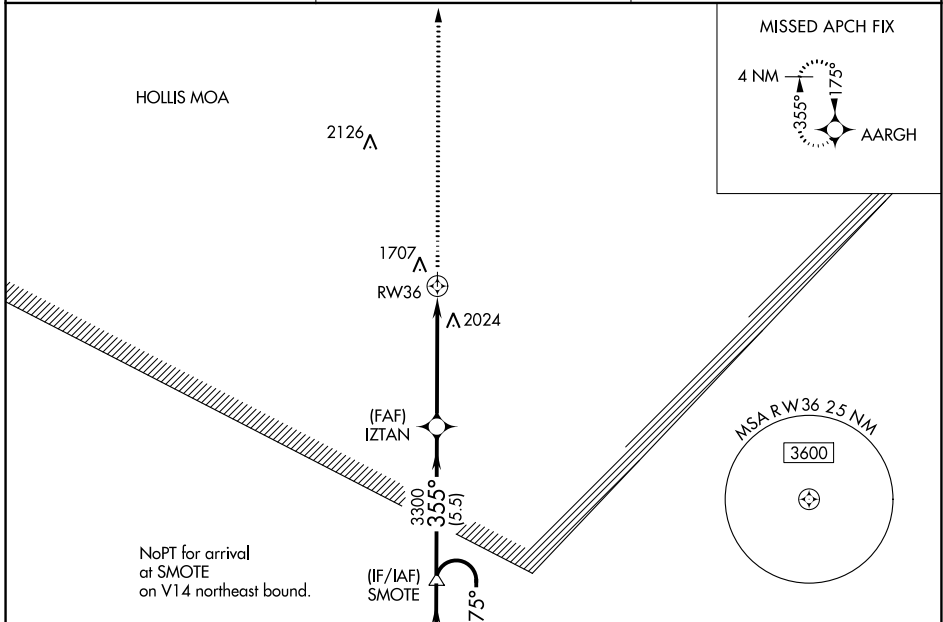
APP CRS 355°	Rwy Idg TDZE Apt Elev	3000 1659 1659
------------------------	-----------------------------	---

RNAV (GPS) RWY 36

HOLLIS MUNI (O35)

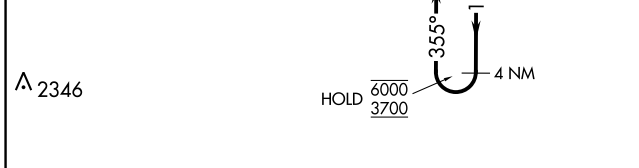
RNP APCH.	MISSED APPROACH: Climb to 3600 direct AARGH and hold.
Circling Rwy 18 NA at night. Use Altus/Quartz Mountain Rgnl altimeter setting.	

AXS AWOS-3PT 118.825	ALTUS APP CON * 125.1 353.7	CTAF 122.9 0
--------------------------------	---------------------------------------	------------------------

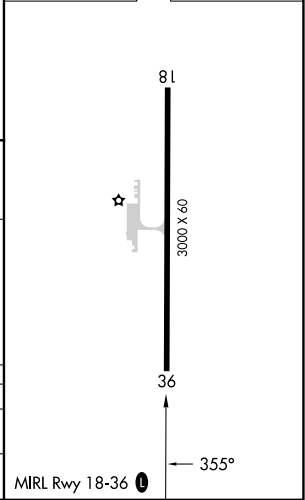
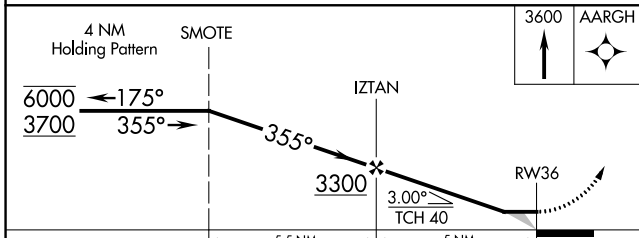


SC-1, 22 FEB 2024 to 21 MAR 2024

SC-1, 22 FEB 2024 to 21 MAR 2024



ELEV 1659	TDZE 1659
-----------	-----------



CATEGORY	A	B	C	D
LNVA MDA	2440-1 781 (800-1)	2440-1¼ 781 (800-1¼)		NA
CIRCLING	2440-1 781 (800-1)	2480-1¼ 821 (900-1¼)		NA

MIRL Rwy 18-36