

LOC I-MEM	APP CRS	Rwy Idg	8946
109.5	093°	TDZE	259
		Apt Elev	341

ILS or LOC RWY 9

MEMPHIS INTL (MEM)

▼ For inop ALS, increase S-ILS 9 Cat E visibility to RVR 4000 and S-LOC 9 Cat E visibility to 1¾ SM.

MALSR


MISSED APPROACH: Climb to 1000 then climbing right turn to 5000 on MEM R-151 to KEEZE INT/MEM 10.4 DME and hold, continue climb-in-hold to 5000.

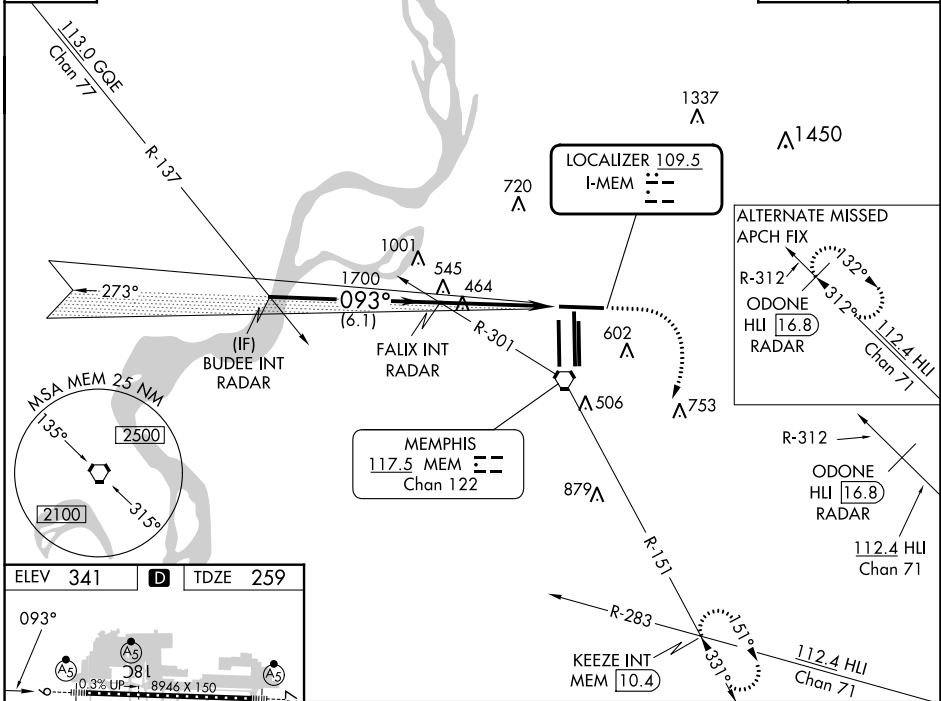
MEMPHIS APP CON	MEMPHIS TOWER	GND CON
119.1 291.6 (176°-355°)	(Rwy 9-27) 118.3 257.8	(Rwy 9-27) 121.0 379.2
125.8 338.3 (356°-175°)	(Rwys 18C-36C, 18L-36R) 119.7 257.8	(Rwys 18C-36C, 18L-36R) 121.9 379.2
	(Rwy 18R-36L) 128.425 257.8	(Rwy 18R-36L) 121.65 379.2

D-ATIS
127.75

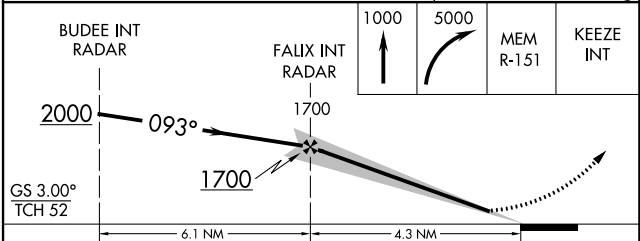
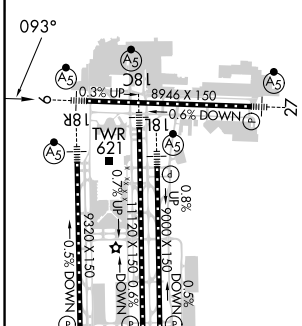
RADAR REQUIRED

CLNC DEL
125.2

CPDLC



ELEV 341	D	TDZE 259
----------	----------	----------



CATEGORY	A	B	C	D	E
S-ILS 9	466/24 207 (200-½)				
S-LOC 9	720/24 461 (400-½)	720/50 461 (400-1)	720/60 461 (400-1¼)		
C CIRCLING	940-1 599 (600-1)	940-1½ 599 (600-1½)	1020-2¼ 679 (700-2¼)	1140-2¾ 799 (800-2¾)	

FAF to MAP 4.3 NM

Knots	60	90	120	150	180
Min:Sec	4:18	2:52	2:09	1:43	1:26