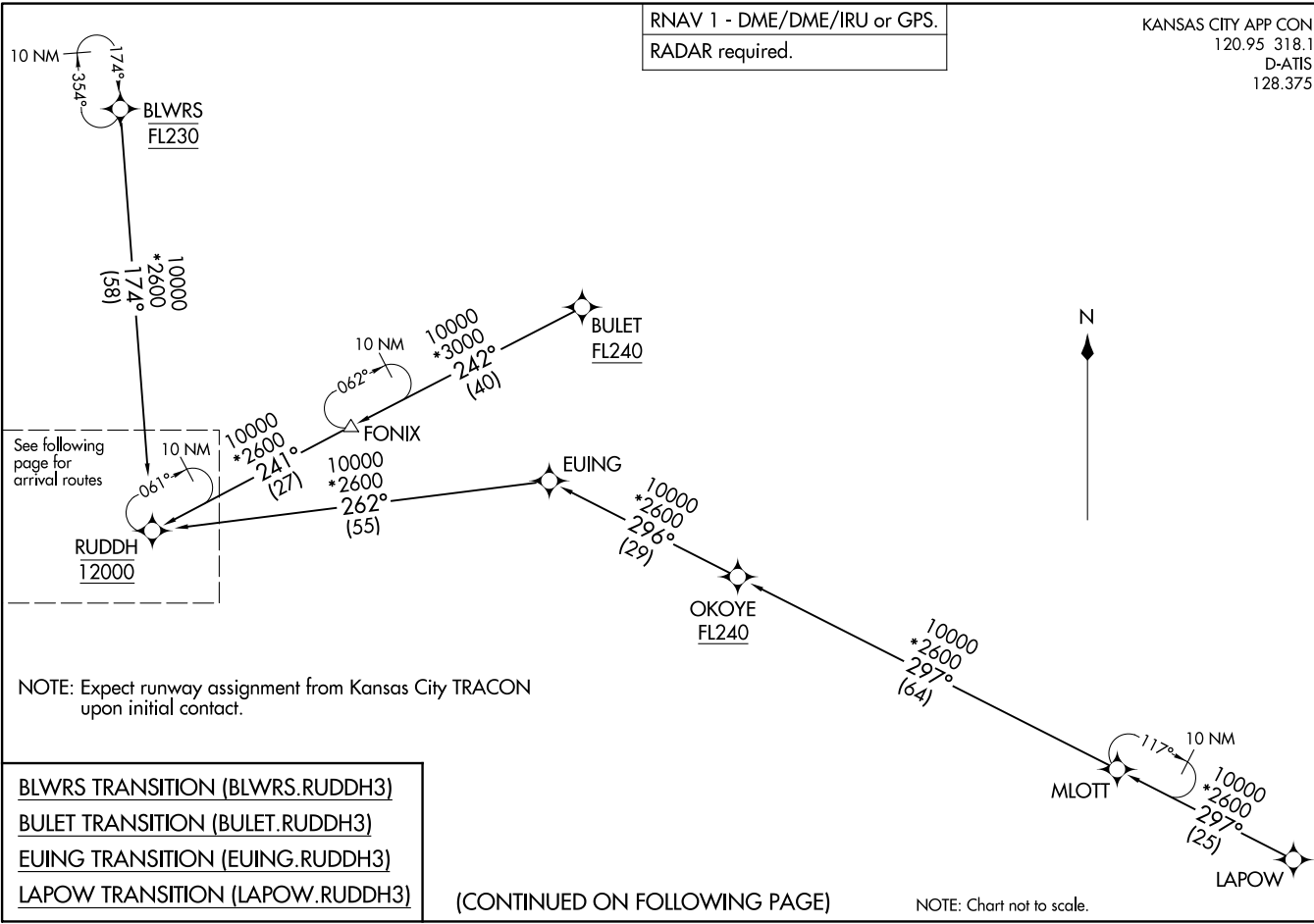


RNAV 1 - DME/DME/IRU or GPS.
RADAR required.

KANSAS CITY APP CON
120.95 318.1
D-ATIS
128.375

(RUDDH.RUDDH3) 23222
RUDDH THREE ARRIVAL (RNAV) Transition Routes
AL-780 (FAA)

KANSAS CITY INTL (MCI)
KANSAS CITY, MISSOURI



See following page for arrival routes

NOTE: Expect runway assignment from Kansas City TRACON upon initial contact.

- BLWRS TRANSITION (BLWRS.RUDDH3)
- BULET TRANSITION (BULET.RUDDH3)
- EUING TRANSITION (EUING.RUDDH3)
- LAPOW TRANSITION (LAPOW.RUDDH3)

(CONTINUED ON FOLLOWING PAGE)

NOTE: Chart not to scale.

(RUDDH.RUDDH3) 10AUG23
RUDDH THREE ARRIVAL (RNAV) Transition Routes

KANSAS CITY, MISSOURI
KANSAS CITY INTL (MCI)

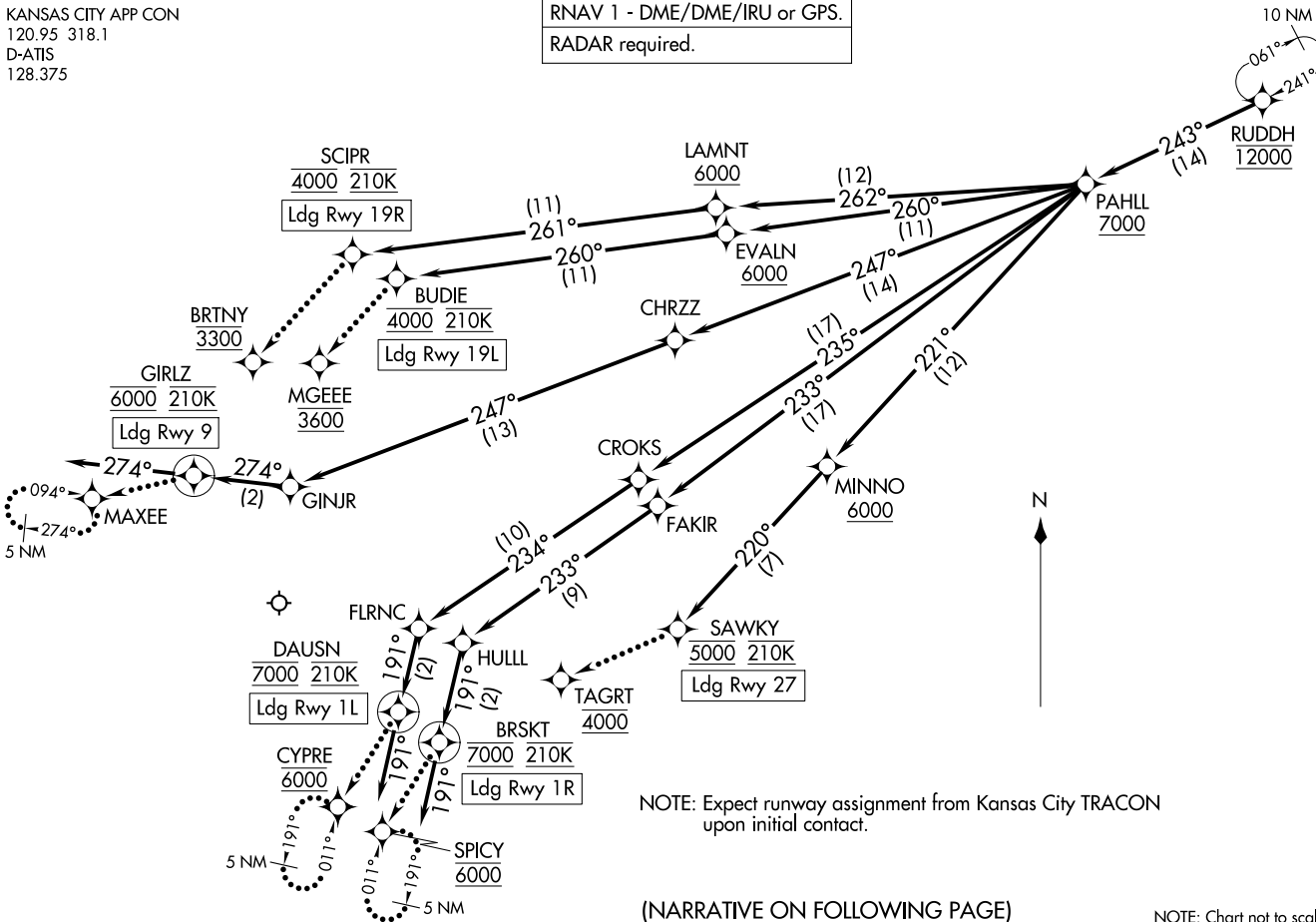
RNAV 1 - DME/DME/IRU or GPS.
RADAR required.

KANSAS CITY APP CON
120.95 318.1
D-ATIS
128.375

RUDDH THREE ARRIVAL (RNAV) (RUDDH, RUDDH3) 10 AUG 23

Arrival Routes

KANSAS CITY, MISSOURI
KANSAS CITY INTL (MCI)



NOTE: Expect runway assignment from Kansas City TRACON upon initial contact.

(NARRATIVE ON FOLLOWING PAGE)

NOTE: Chart not to scale.

RUDDH, RUDDH3) 23222

Arrival Routes

KANSAS CITY INTL (MCI)
KANSAS CITY, MISSOURI

AL-780 (FAA)