

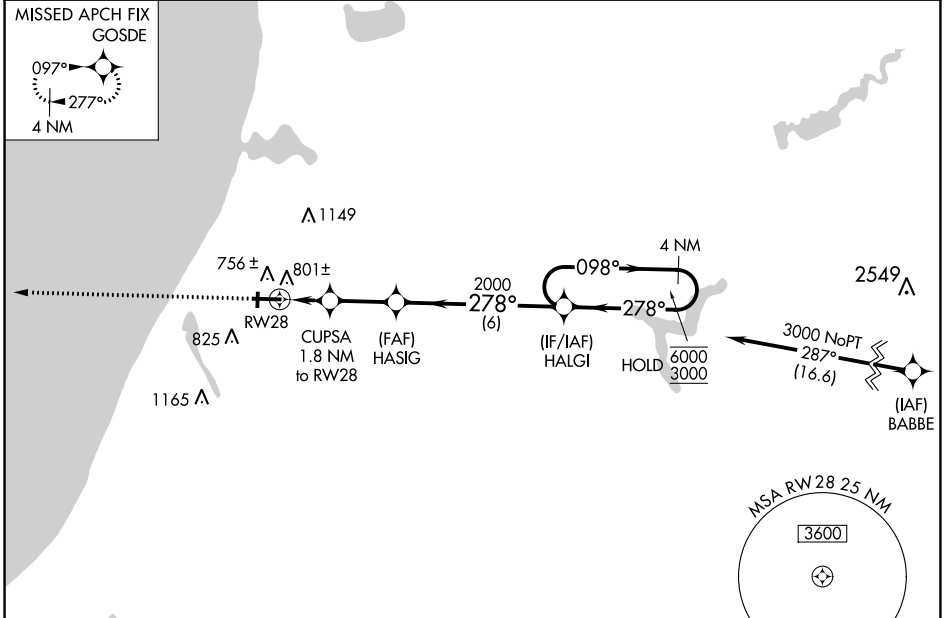
WAAS CH <b>42532</b> <b>W28A</b>	APP CRS <b>278°</b>	Rwy Idg TDZE Apt Elev	<b>5501</b> <b>621</b> <b>621</b>
--	------------------------	-----------------------------	---

# RNAV (GPS) RWY 28

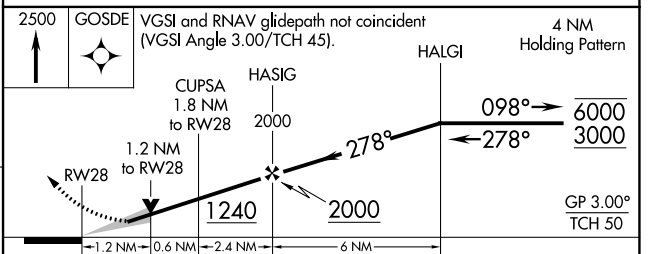
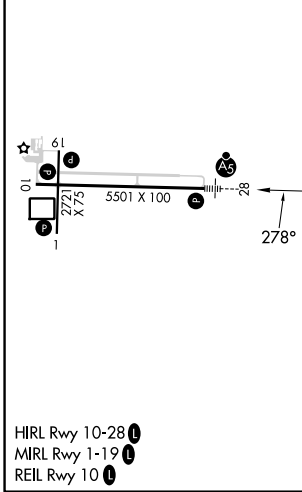
MANISTEE COUNTY/BLACKER (MBL)

RNP APCH - GPS.	MALSR	MISSED APPROACH: Climb to 2500 direct GOSDE and hold.
<p>Circling to Rwy 1, 19 NA at night. For uncompensated Baro-VNAV systems, LNAV/VNAV NA below -16°C or above 54°C.</p>		

AWOS-3PT <b>118.825</b>	MINNEAPOLIS CENTER <b>120.85 322.35</b>	UNICOM <b>122.8 (CTAF) 0</b>
----------------------------	--	---------------------------------



ELEV 621	<b>D</b>	TDZE 621
----------	----------	----------



CATEGORY	A	B	C	D
LPV DA		821-½	200 (200-½)	
LNAV/VNAV DA		984-⅝	363 (400-⅝)	
LNAV MDA	1060-½	439 (500-½)	1060-¾	439 (500-¾)
CIRCLING	1160-1 539 (600-1)	1220-1 599 (600-1)	1400-2¼ 779 (800-2¼)	1500-2¾ 879 (900-2¾)

EC-1, 22 FEB 2024 to 21 MAR 2024

EC-1, 22 FEB 2024 to 21 MAR 2024