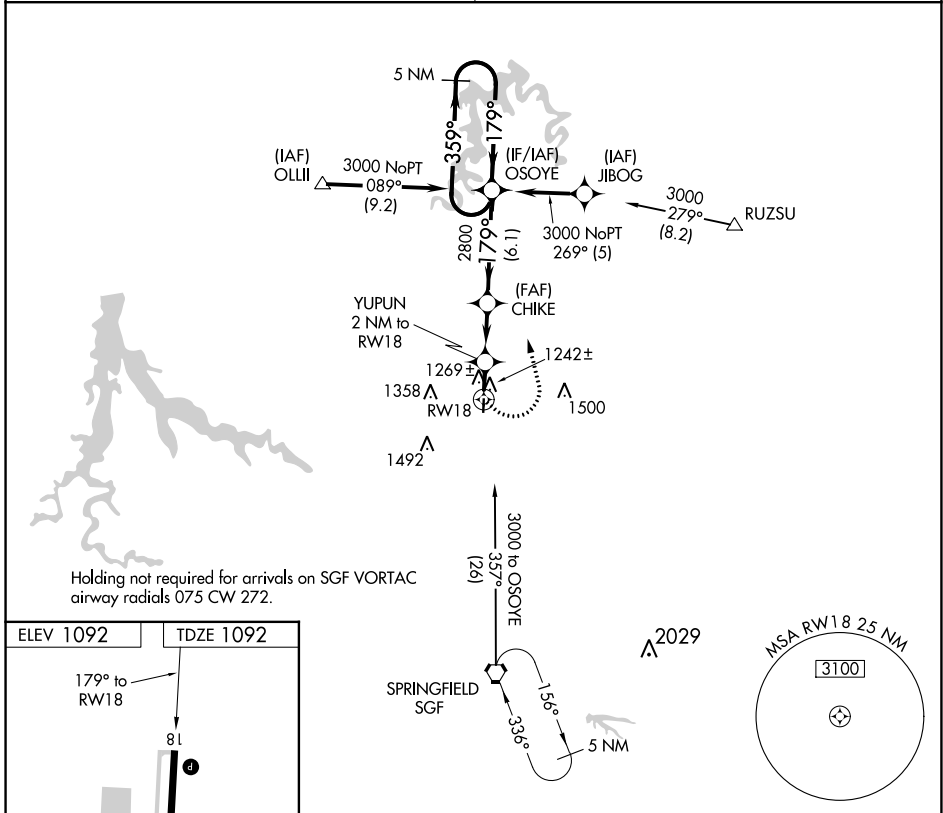


APP CRS	Rwy Idg	4000
179°	TDZE	1092
	Apt Elev	1092

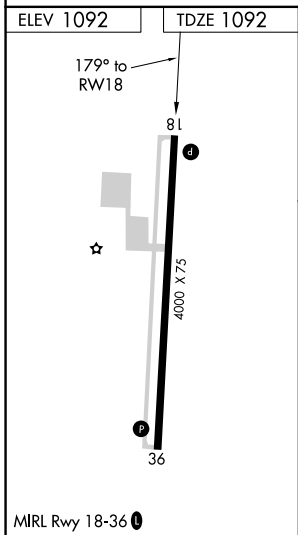
RNAV (GPS) RWY 18

BOLIVAR MUNI (M17)

<p>▽ DME/DME RNP-0.3 NA. △ NA Visibility reduction by helicopters NA. Use Springfield-Branson Ntl altimeter setting. Straight-in and Circling Rwy 18 NA at night.</p>	<p>MISSED APPROACH: Climbing left turn to 3000 direct OSOYE and hold.</p>
<p>SPRINGFIELD APP CON 124.95 318.2</p>	<p>UNICOM 123.0 (CTAF) 1</p>



Holding not required for arrivals on SGF VORTAC
 airway radials 075 CW 272.



3000 OSOYE	CHIKE	OSOYE	5 NM Holding Pattern
YUPUN 2 NM to RWY 18	CHIKE	OSOYE	
1760	2800	3000	
2 NM	3.2 NM	6.1 NM	
3.04° TCH 38	179°	359°	
		179°	
36			
MIRL Rwy 18-36 1			

CATEGORY	A	B	C	D
LNAV MDA	1600-1	508 (600-1)	1600-1½ 508 (600-1½)	NA
CIRCLING	1660-1	568 (600-1)	1740-1¾ 648 (700-1¾)	NA

NC-3, 22 FEB 2024 to 21 MAR 2024

NC-3, 22 FEB 2024 to 21 MAR 2024

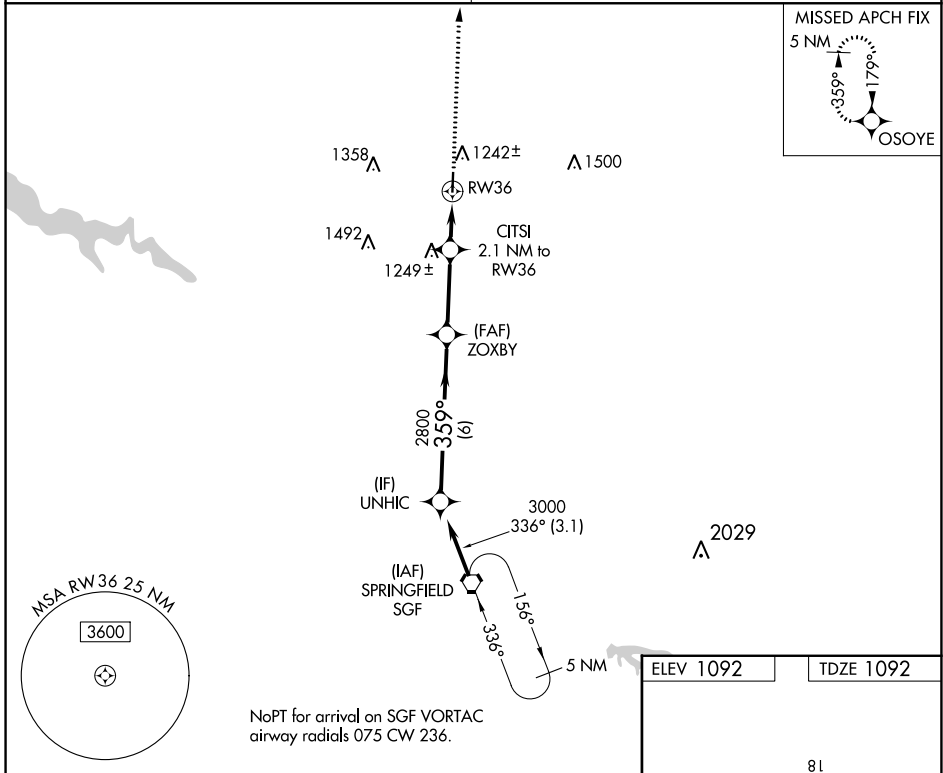
WAAS CH 78303 W36A	APP CRS 359°	Rwy Idg 4000 TDZE 1092 Apt Elev 1092
--	------------------------	---

RNAV (GPS) RWY 36

BOLIVAR MUNI (M17)

<p>⚠ DME/DME RNP-0.3 NA. Visibility reduction by helicopters NA. Use Springfield-Branson NHI altimeter setting. Circling Rwy 18 NA at night.</p>	<p>MISSED APPROACH: Climb to 3000 direct OSOYE and hold.</p>
---	--

<p>SPRINGFIELD APP CON 124.95 318.2</p>	<p>UNICOM 123.0 (CTAF) 0</p>
--	---



Procedure Turn NA

UNHIC

3000

GP 3.00° TCH 40

359°

2800

6 NM

ZOXY

3.1 NM

CITSI 2.1 NM to RW36

*1800

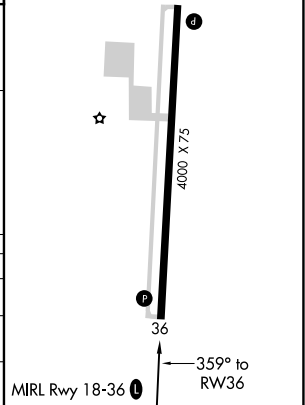
2.1 NM

RW36

3000 OSOYE

*LNAV only

CATEGORY	A	B	C	D
LPV DA	1448-1¼	356 (400-1¼)		NA
LNAV MDA	1580-1	488 (500-1)	1580-1¼ 488 (500-1¼)	NA
CIRCLING	1660-1	568 (600-1)	1740-1¾ 648 (700-1¾)	NA



NC-3, 22 FEB 2024 to 21 MAR 2024

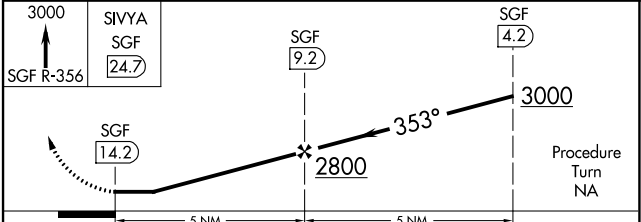
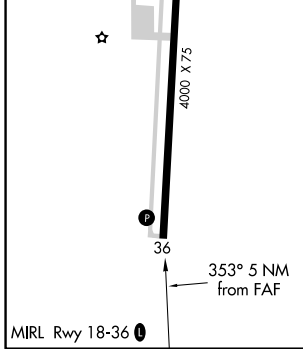
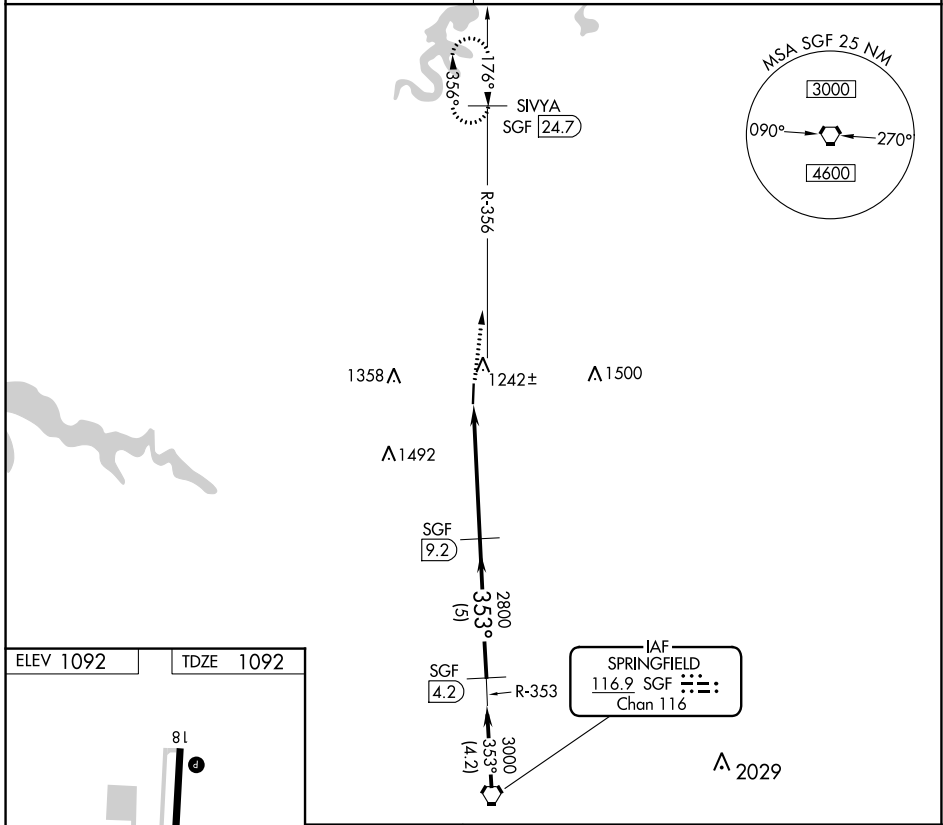
NC-3, 22 FEB 2024 to 21 MAR 2024

VORTAC SGF 116.9 Chan 116	APP CRS 353°	Rwy Idg TDZE Apt Elev	4000 1092 1092
---	------------------------	-----------------------------	---

VOR/DME RWY 36

BOLIVAR MUNI (M17)

<p>NA Use Springfield-Branson Ntl altimeter setting. Circling Rwy 18 NA at night.</p>	<p>MISSED APPROACH: Climb to 3000 via SGF R-356 to SIVYA/SGF 24.7 DME and hold.</p>
<p>SPRINGFIELD APP CON 124.95 318.2</p>	<p>UNICOM 123.0 (CTAF) 1</p>



CATEGORY	A	B	C	D
S-36	1700-1	608 (700-1)		NA
C CIRCLING	1700-1	608 (700-1)		NA

NC-3, 22 FEB 2024 to 21 MAR 2024

NC-3, 22 FEB 2024 to 21 MAR 2024