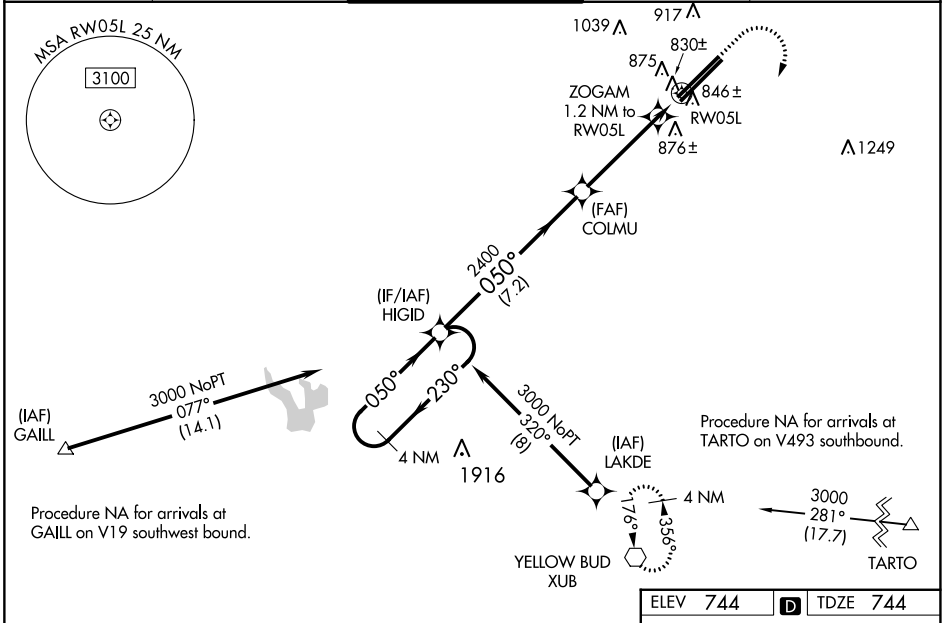


WAAS CH 78022 W05B	APP CRS 050°	Rwy Idg 11004 TDZE 744 Apt Elev 744
--	------------------------	--

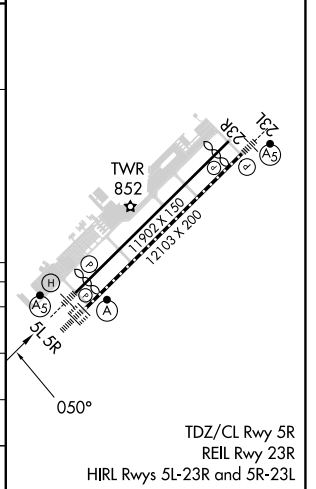
RNAV (GPS) RWY 5L

RICKENBACKER INTL (LCK)

RNP APCH.		MALSR 	MISSED APPROACH: Climb to 1500 then climbing right turn to 3000 direct XUB VOR and hold.
ATIS 132.75	COLUMBUS APP CON 134.0 279.6	RICK TOWER 120.05 348.4	GND CON 125.275 275.8
		CLNC DEL 125.275 275.8	



ELEV 744		D TDZE 744		
4 NM Holding Pattern		VGSi and RNAV glidepath not coincident (VGSi Angle 3.00/TCH 70).		
HIGID		XUB		
3000 ← 230°		1500		
→ 050°		3000		
GP 3.00° TCH 55		XUB		
2400		* LNAV only.		
COLMU 2400		ZOGAM 1.2 NM to RW05L		
*1200		RW05L		
7.2 NM		3.8 NM		
		1.2 NM		
CATEGORY	A	B	C	D
LPV DA		944-1/2	200 (200-1/2)	
LNAV/VNAV DA		1007-1/2	263 (300-1/2)	
LNAV MDA	1100-1/2	356 (400-1/2)	1100-5/8	356 (400-5/8)
CIRCLING	1240-1	496 (500-1)	1280-1 1/2	1400-2
			536 (600-1 1/2)	656 (600-2)



EC-2, 22 FEB 2024 to 21 MAR 2024

EC-2, 22 FEB 2024 to 21 MAR 2024