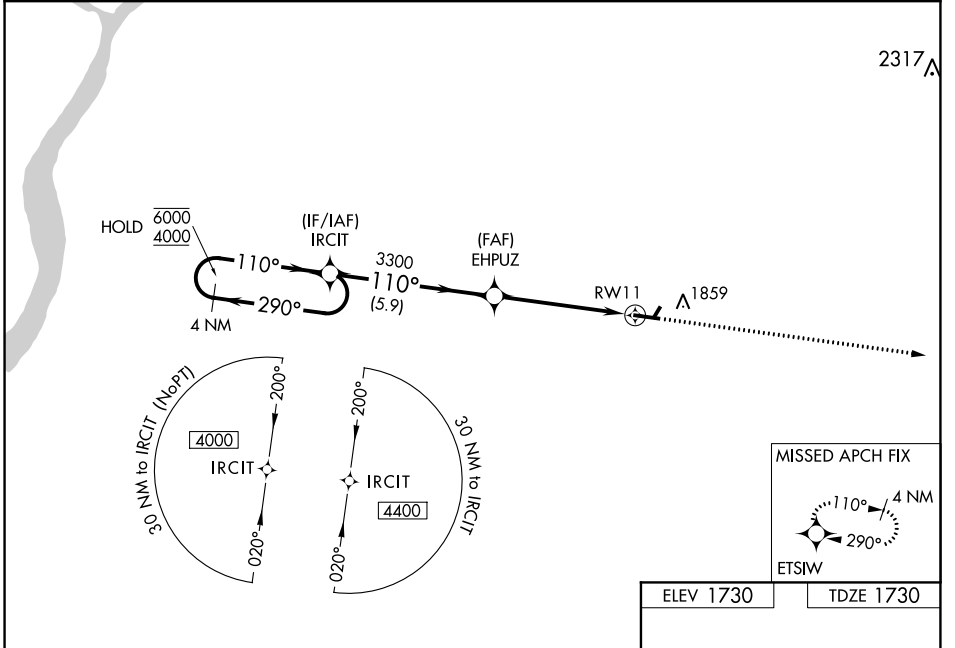


WAAS CH <b>61214</b> <b>W11A</b>	APP CRS <b>110°</b>	Rwy Idg TDZE Apt Elev	<b>5101</b> <b>1730</b> <b>1730</b>
--	------------------------	-----------------------------	---

# RNAV (GPS) RWY 11

SCHUYLKILL COUNTY/JOE ZERBEY (Z.ER)

RNP APCH.		<p><b>MISSED APPROACH:</b> Climb to 4000 direct ETSIW and hold.</p>
<p><b>NA</b> Circling NA to Rws 4 and 22. Baro-VNAV NA when using Selinsgrove altimeter setting. For uncompensated Baro-VNAV Systems, LNAV/VNAV NA below -18°C or above 54°C. When local altimeter setting not received, use Selinsgrove altimeter setting and increase LPV DA to 2191 feet, LNAV/VNAV DA to 2281 feet and all MDAs 280 feet. Increase LPV all Cats visibility 3/8 SM, LNAV/VNAV all Cats visibility 3/4 SM, LNAV Cats C/D visibility 3/8 SM and Circling Cats C/D visibility 3/4 SM. VDP NA when using Selinsgrove altimeter setting.</p>		
AWOS-3 <b>127.575</b>	HARRISBURG APP CON <b>118.25 269.45</b>	UNICOM <b>123.075</b> (CTAF) <b>1</b>



NE-4, 27 JAN 2022 to 24 FEB 2022

NE-4, 27 JAN 2022 to 24 FEB 2022

ELEV 1730	TDZE 1730
<p>GP 3.00° TCH 42</p>	
<p>4 NM Holding Pattern</p>	
<p>6000 ← 290° 4000 → 110°</p>	
<p>IRCIT</p>	
<p>EHPUZ 3400</p>	
<p>*1.4 NM to RWY 11</p>	
<p>*LNAV only.</p>	
<p>110° to RWY 11</p>	
<p>5101 X 75</p>	
<p>→ 0.5% UP</p>	
<p>REIL Rws 11 and 29 <b>1</b> MIRL Rwy 11-29 <b>1</b></p>	

WAAS CH <b>63014</b> <b>W29A</b>	APP CRS <b>290°</b>	Rwy Idg TDZE Apt Elev	<b>5101</b> <b>1724</b> <b>1730</b>
--	------------------------	-----------------------------	---

# RNAV (GPS) RWY 29

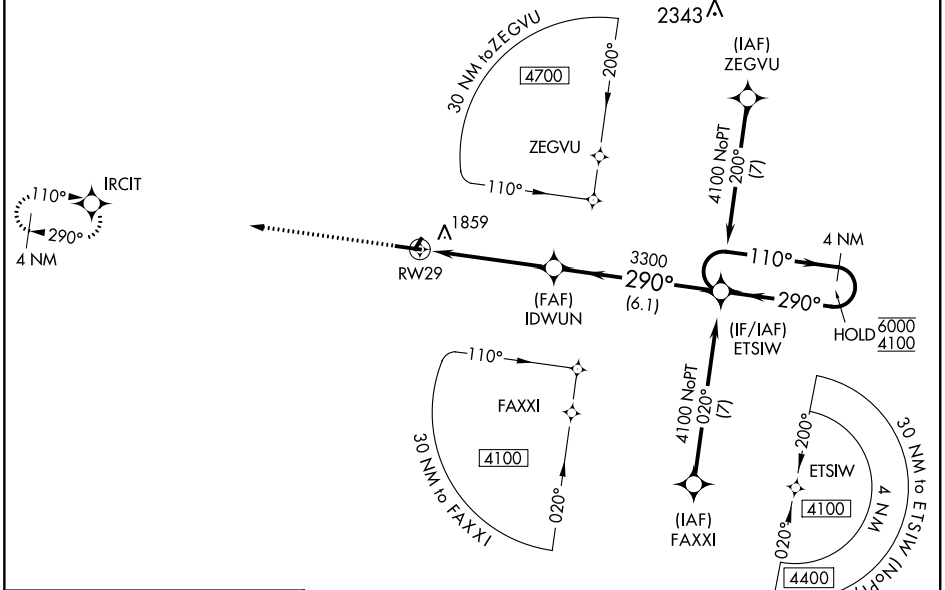
SCHUYLKILL COUNTY/JOE ZERBEY (Z,ER)

RNP APCH - GPS.

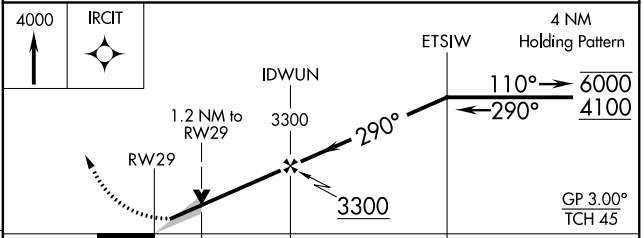
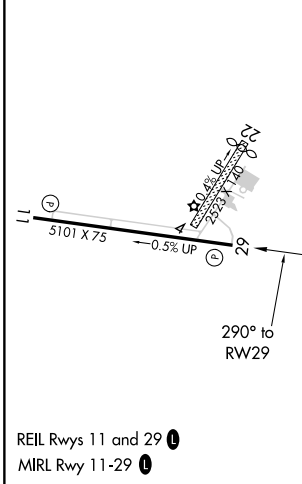
**NA** Circling NA to Rws 4 and 22. Baro-VNAV NA when using Selinsgrove altimeter setting. For uncompensated Baro-VNAV systems, LNAV/VNAV NA below -18°C or above 54°C. VDP NA when using Selinsgrove altimeter setting. When local altimeter setting not received, use Selinsgrove altimeter setting: increase LPV DA to 2156 feet and visibility 1/2 SM; LNAV/VNAV DA to 2376 feet and visibility 3/4 SM; increase all MDAs 240 feet and visibility LNAV Cats C/D 3/4 SM and Circling Cats C/D 1/2 SM.

MISSED APPROACH: Climb to 4000 direct IRCIT and hold.

AWOS-3 <b>127.575</b>	HARRISBURG APP CON <b>118.25 269.45</b>	UNICOM <b>123.075 (CTAF)</b>
--------------------------	--	---------------------------------



ELEV 1730	TDZE 1724
-----------	-----------



CATEGORY	A	B	C	D
LPV DA		1924-3/4	200 (200-3/4)	
LNAV/VNAV DA		2144-1 1/8	420 (500-1 1/8)	
LNAV MDA	2120-1	396 (400-1)	2120-1 1/8	396 (400-1 1/8)
<b>C</b> CIRCLING	2160-1 430 (500-1)	2180-1 450 (500-1)	2180-1 1/2 450 (500-1 1/2)	2280-2 550 (600-2)

NE-4, 27 JAN 2022 to 24 FEB 2022

NE-4, 27 JAN 2022 to 24 FEB 2022

REIL Rws 11 and 29  
MRL Rwy 11-29

VORTAC RAV <b>114.6</b> Chan <b>93</b>	APP CRS <b>060°</b>	Rwy Idg TDZE Apt Elev <b>1729</b>	<b>N/A</b> <b>N/A</b>
--	------------------------	---	--------------------------

# VOR-A

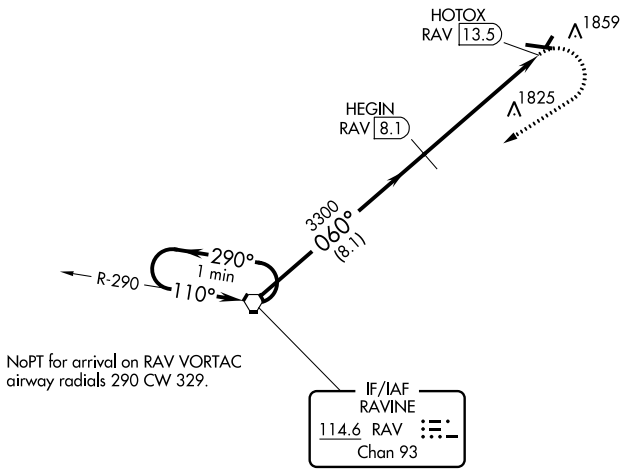
SCHUYLKILL COUNTY/JOE ZERBEY (Z.E.R.)

**V** Circling to Rwy 4, 22 NA at night. DME required.  
**Δ** NA When local altimeter setting not received, use Penn Valley altimeter setting and increase all MDAs 280 feet and visibility Cat C and D ¾ SM.

MISSED APPROACH: Climbing right turn to 4000 direct RAV VORTAC and hold.

AWOS-3 <b>127.575</b>	HARRISBURG APP CON <b>118.25 269.45</b>	UNICOM <b>123.075 (CTAF)</b> <b>0</b>
--------------------------	--	--

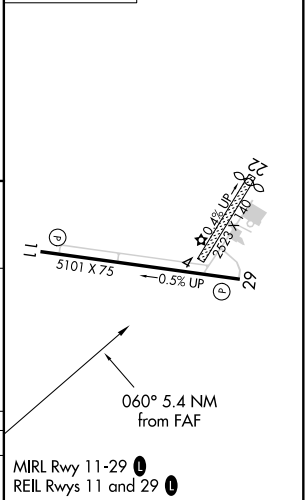
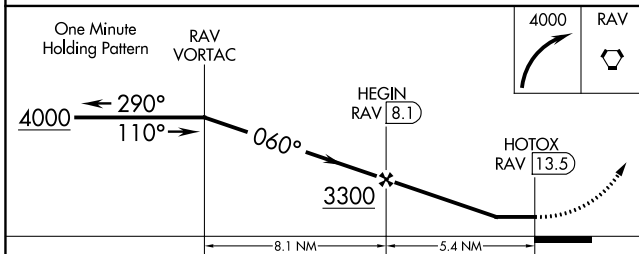
Δ 2050



NoPT for arrival on RAV VORTAC airway radials 290 CW 329.

IF/IAF  
RAVINE  
114.6 RAV  
Chan 93

ELEV 1729



CATEGORY	A	B	C	D
<b>C</b> CIRCLING	2160-1 431 (500-1)	2180-1 451 (500-1)	2240-1½ 511 (600-1½)	2280-2 551 (600-2)

MIRL Rwy 11-29 **0**  
REIL Rwys 11 and 29 **0**

# VOR-A

NE-4, 27 JAN 2022 to 24 FEB 2022

NE-4, 27 JAN 2022 to 24 FEB 2022