

LOC/DME I-YKM <b>110.1</b> Chan <b>38</b>	APP CRS <b>274°</b>	Rwy Idg TDZE Apt Elev <b>7604</b> <b>1068</b> <b>1099</b>
---	------------------------	--

# ILS or LOC RWY 27

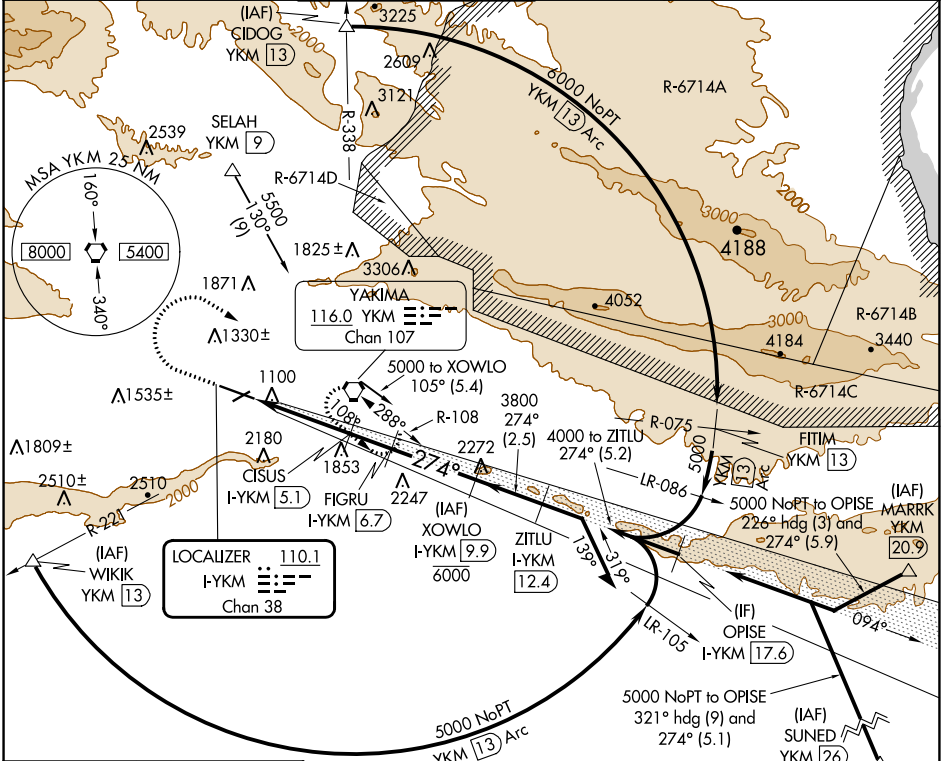
YAKIMA AIR TRML/MCALLISTER FLD (YKM)

DME required for procedure entry. DME required for LOC only.

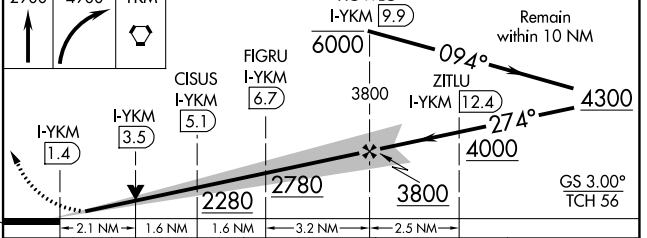
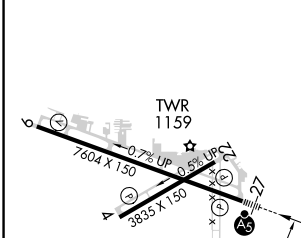
When local altimeter setting not received, procedure NA. Circling NA south of Rwy 9 and 27. For inop ALS, increase S-LOC 27 Cats C/D visibility to 2 SM. For inop ALS, increase S-ILS 27 all Cats visibility to 1 1/2 SM. #RVR 1800 authorized with use of FD or AP or HUD to DA.

MALSR  
MISSED APPROACH: Climb to 2900 then climbing right turn to 4900 direct YKM. VORTAC and hold, continue climb-in-hold to 4900. # Missed approach requires minimum climb of 275 feet per NM to 3600.

ATIS <b>125.25</b>	SPOKANE APP CON * <b>123.8 263.15</b>	YAKIMA TOWER * <b>133.25 (CTAF) 0 257.8</b>	GND CON <b>121.9</b>	CLNC DEL <b>121.9</b>	UNICOM <b>122.95</b>
-----------------------	--	--	-------------------------	--------------------------	-------------------------



ELEV 1099	<b>D</b>	TDZE 1068
-----------	----------	-----------



CATEGORY	A	B	C	D
S-ILS 27 #		1268/24	200 (200-1/2)	
S-ILS 27		1713-1 1/8	645 (700-1 1/8)	
S-LOC 27	1780/24	712 (700-1/2)	1780-1 1/8	712 (700-1 1/8)
<b>C</b> CIRCLING	1780-1	681 (700-1)	1940-2 1/2	2280-3
			841 (900-2 1/2)	1181 (1200-3)

MIRL Rwy 4-22  
HIRL Rwy 9-27  
REIL Rwy 4, 9, and 22

NW-1, 22 FEB 2024 to 21 MAR 2024

NW-1, 22 FEB 2024 to 21 MAR 2024

LOC/DME I-YKM <b>110.1</b> Chan <b>38</b>	APP CRS <b>094°</b>	Rwy Idg TDZE Apt Elev <b>1099</b>	N/A N/A <b>1099</b>
---	------------------------	--------------------------------------	---------------------------

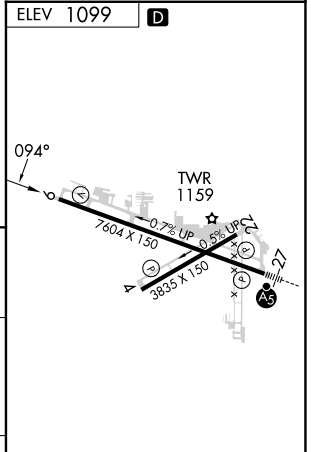
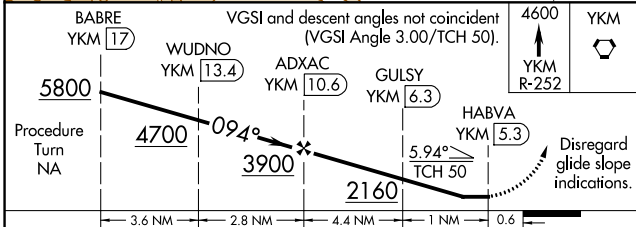
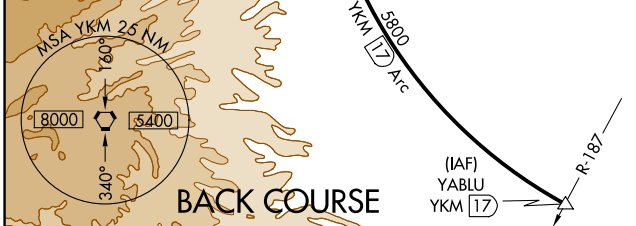
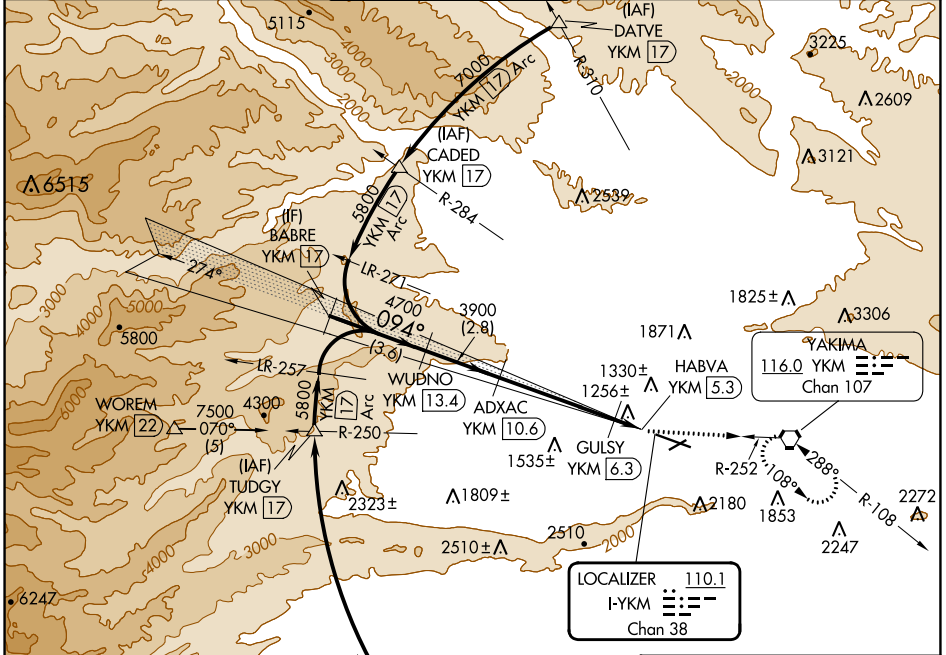
# LOC/DME BC-B

YAKIMA AIR TRML/MCALLISTER FLD (YKM)

**⚠** Simultaneous reception of I-YKM and YKM DME required. Circling NA south of Rwy 9-27.  
When local altimeter setting not received, procedure NA.

**⚠** MISSED APPROACH: Climb to 4600 via YKM VORTAC R-252 to YKM VORTAC and hold, continue climb-in-hold to 4600.

ATIS <b>125.25</b>	SPOKANE APP CON* <b>123.8 263.15</b>	YAKIMA TOWER* <b>133.25</b> (CTAF) <b>0 257.8</b>	GND CON <b>121.9</b>	CLNC DEL <b>121.9</b>	UNICOM <b>122.95</b>
-----------------------	---	--	-------------------------	--------------------------	-------------------------



CATEGORY	A	B	C	D
<b>C</b> CIRCLING	1760-1	661 (700-1)	1940-2½ 841 (900-2½)	2280-3 1181 (1200-3)

MIRL Rwy 4-22  
HIRL Rwy 9-27  
REIL Rws 4, 9, and 22

NW-1, 22 FEB 2024 to 21 MAR 2024

NW-1, 22 FEB 2024 to 21 MAR 2024

APP CRS	Rwy Idg	<b>7604</b>
<b>094°</b>	TDZE	<b>1099</b>
	Apt Elev	<b>1099</b>

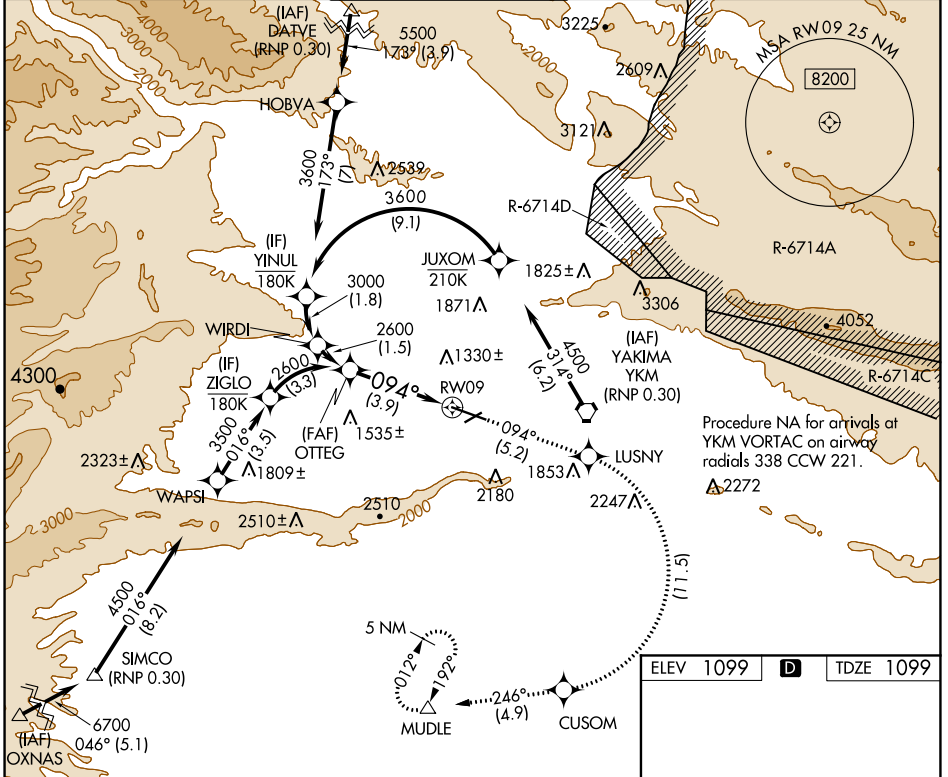
# RNAV (RNP) RWY 9

YAKIMA AIR TRML/MCALLISTER FLD (YKM)

**RF required. GPS required. For uncompensated Baro-VNAV systems, procedure NA below -17°C (2°F) or above 45°C (113°F).**  
 \* Missed approach requires a minimum climb of 425 feet per NM to 3000.

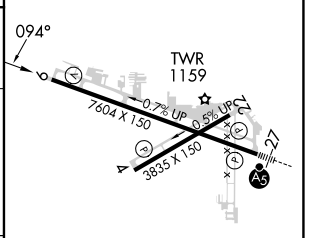
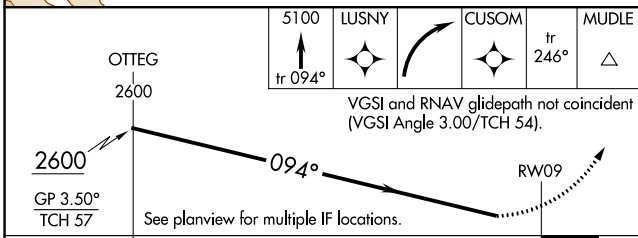
**MISSED APPROACH:** Climb to 5100 on track 094° to LUSNY right turn to CUSOM and on track 246° to MUDLE and hold.

ATIS <b>125.25</b>	SPOKANE APP CON* <b>123.8 263.15</b>	YAKIMA TOWER* <b>133.25 (CTAF) 0 257.8</b>	GND CON <b>121.9</b>	CLNC DEL <b>121.9</b>	UNICOM <b>122.95</b>
-----------------------	---	---	-------------------------	--------------------------	-------------------------



NW-1, 22 FEB 2024 to 21 MAR 2024

NW-1, 22 FEB 2024 to 21 MAR 2024



CATEGORY	A	B	C	D
RNP 0.30 DA*	1473-1	374 (400-1)		NA
RNP 0.30 DA	1934-2½	835 (900-2½)		NA

## AUTHORIZATION REQUIRED

MRL Rwy 4-22  
 HIRL Rwy 9-27  
 REL Rws 4, 9, and 22


# RNAV (RNP) Y RWY 27

YAKIMA AIR TRML/MCALLISTER FLD (YKM)

APP CRS	Rwy Idg	<b>7604</b>
<b>274°</b>	TDZE	<b>1068</b>
	Apt Elev	<b>1099</b>

RNP APCH - GPS. From MUDLE or OVTEE or YIGUN: RF.

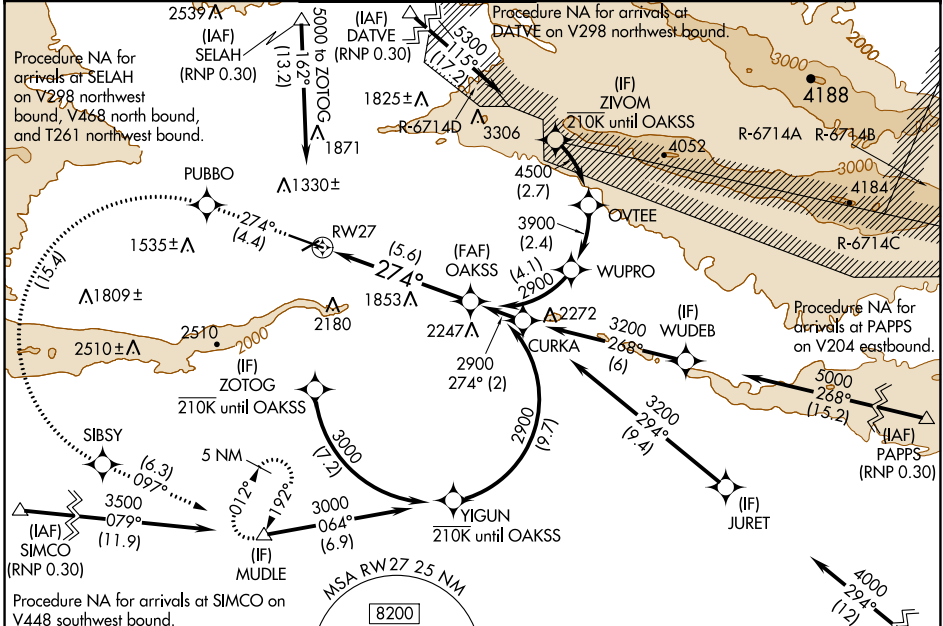
▼ For uncompensated Baro-VNAV systems, procedure NA below -15°C or above 54°C. DATVE transition NA when R-6714 A, C, D active. For inop ALS, increase RNP 0.30\* all Cats visibility to RVR 5500 and RNP 0.30 all Cats to 2½ SM.

MALSRS 

MISSED APPROACH: Climb to 5100 on track 274° to PUBBO left turn to SIBSY and on track 097° to MUDLE and hold.

\*Missed approach requires minimum climb of 425 feet per NM to 3400.

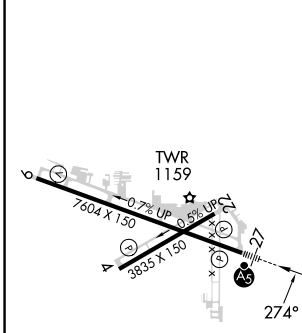
ATIS	SPOKANE APP CON*	YAKIMA TOWER*	GND CON	CLNC DEL	UNICOM
<b>125.25</b>	<b>123.8 263.15</b>	<b>133.25 (CTAF) 0 257.8</b>	<b>121.9</b>	<b>121.9</b>	<b>122.95</b>



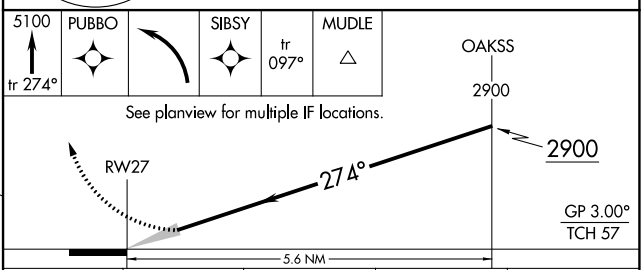
NW-1, 22 FEB 2024 to 21 MAR 2024

NW-1, 22 FEB 2024 to 21 MAR 2024

ELEV 1099	<b>D</b>	TDZE 1068
-----------	----------	-----------



Procedure NA for arrivals at SUNED on V4-298 southeast bound and V497 northeast bound.



CATEGORY	A	B	C	D
RNP 0.30 DA*		1418/30	350 (400-5%)	
RNP 0.30 DA		1845-1¾	777 (800-1¾)	

MIRL Rwy 4-22  
HIRL Rwy 9-27  
REIL Rwy 4, 9, and 22


## AUTHORIZATION REQUIRED

APP CRS	Rwy Idg	<b>7604</b>
<b>274°</b>	TDZE	<b>1068</b>
	Apt Elev	<b>1099</b>

# RNAV (RNP) Z RWY 27

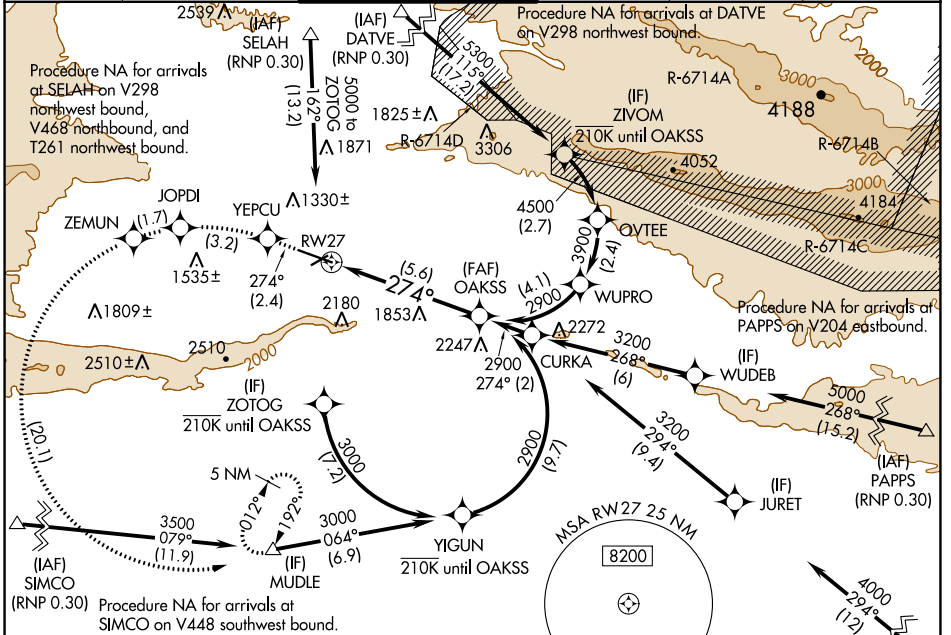
YAKIMA AIR TRML/MCALLISTER FLD (YKM)

▼ For uncompensated Baro-VNAV systems, procedure NA below -17°C (2°F) or above 54°C (130°F). RF required. GPS required. Missed approach requires RNP less than 1.0. For inop ALS increase \*RNP 0.10 DA visibility all Cats to RVR 4500 and RNP 0.30 DA visibility all Cats to 1/2 SM. DATVE transition NA when R-6714 A, C, D active.

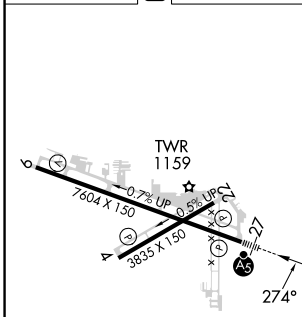
MALSRS 

MISSED APPROACH: Climb to 5100 on track 274° to YEPCU left turn to JOPDI left turn to ZEMUN left turn to MUDLE and hold.  
\* Missed approach requires a minimum climb of 215 feet per NM to 4300.

ATIS <b>125.25</b>	SPOKANE APP CON* <b>123.8 263.15</b>	YAKIMA TOWER* <b>133.25 (CTAF) 0 257.8</b>	GND CON <b>121.9</b>	CLNC DEL <b>121.9</b>	UNICOM <b>122.95</b>
-----------------------	---	---	-------------------------	--------------------------	-------------------------



ELEV 1099	<b>D</b>	TDZE 1068
-----------	----------	-----------



Procedure NA for arrivals at SUNED eastbound, and V497 northeast bound.

5100	YEPCU	JOPDI	ZEMUN	MUDLE	OAKSS
↑	✧	↶	↶	↶	△
tr 274°					2900
See planview for multiple IF locations.					
					2900
					GP 3.00°
					TCH 57
5.6 NM					

CATEGORY	A	B	C	D
RNP 0.10 DA*		1348/24	280 (300-1/2)	
RNP 0.30 DA		1468/45	400 (400-7/8)	

## AUTHORIZATION REQUIRED

NW-1, 22 FEB 2024 to 21 MAR 2024

NW-1, 22 FEB 2024 to 21 MAR 2024

WAAS CH <b>90512</b> W <b>27A</b>	APP CRS <b>274°</b>	Rwy Idg <b>7604</b> TDZE <b>1068</b> Apt Elev <b>1099</b>
---	------------------------	---

# RNAV (GPS) X RWY 27

YAKIMA AIR TRML/MCALLISTER FLD (YKM)

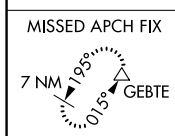
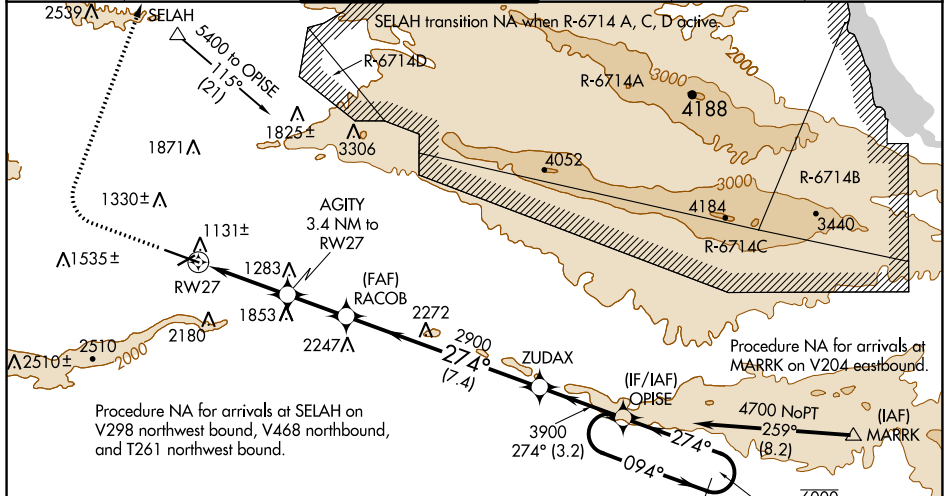
RNP APCH.

▼ Circling NA south of Rws 9 and 27.  
 ▲ For inop ALS, increase LPV all Cats visibility to 1 3/4 SM.  
 \*RVR 1800 authorized with use of FD or AP or HUD to DA.

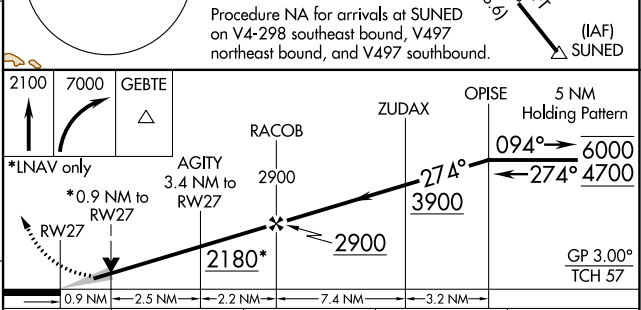
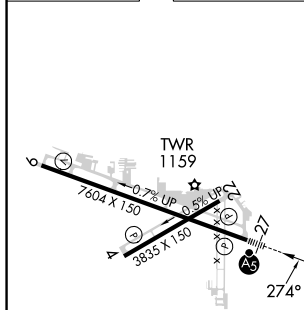
MALSRL  
 AS

MISSED APPROACH: Climb to 2100 then climbing right turn to 7000 direct GEBTE and hold. Continue climb-in-hold to 7000. \*Missed approach requires minimum climb of 300 feet per NM to 3700. #Missed approach requires minimum climb of 300 feet per NM to 4900.

ATIS <b>125.25</b>	SPOKANE APP CON* <b>123.8 263.15</b>	YAKIMA TOWER* <b>133.25 (CTAF) 257.8</b>	GND CON <b>121.9</b>	CLNC DEL <b>121.9</b>	UNICOM <b>122.95</b>
-----------------------	---	---	-------------------------	--------------------------	-------------------------



ELEV 1099	D	TDZE 1068
-----------	---	-----------



CATEGORY	A	B	C	D
LPV DA*	1268/24 200 (200-1/2)			
LPV DA	1668-1 1/4 600 (600-1 1/4)			
LNAV MDA#	1400/24	332 (400-1/2)	1400/26	332 (400-1/2)
LNAV MDA	1720/24	652 (700-1/2)	1720-1 3/8	652 (700-1 3/8)
CIRCLING	1720-1	621 (700-1)	1880-2 1/4	2280-3
			781 (800-2 1/4)	1181 (1200-3)

MIRL Rwy 4-22  
 HIRL Rwy 9-27  
 REIL Rws 4, 9, and 22

NW-1, 22 FEB 2024 to 21 MAR 2024

NW-1, 22 FEB 2024 to 21 MAR 2024

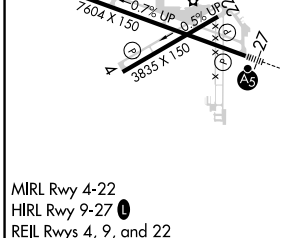
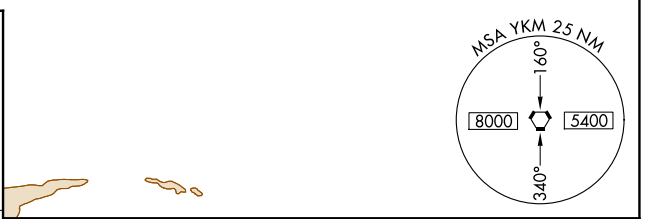
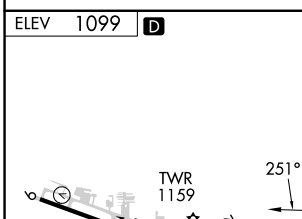
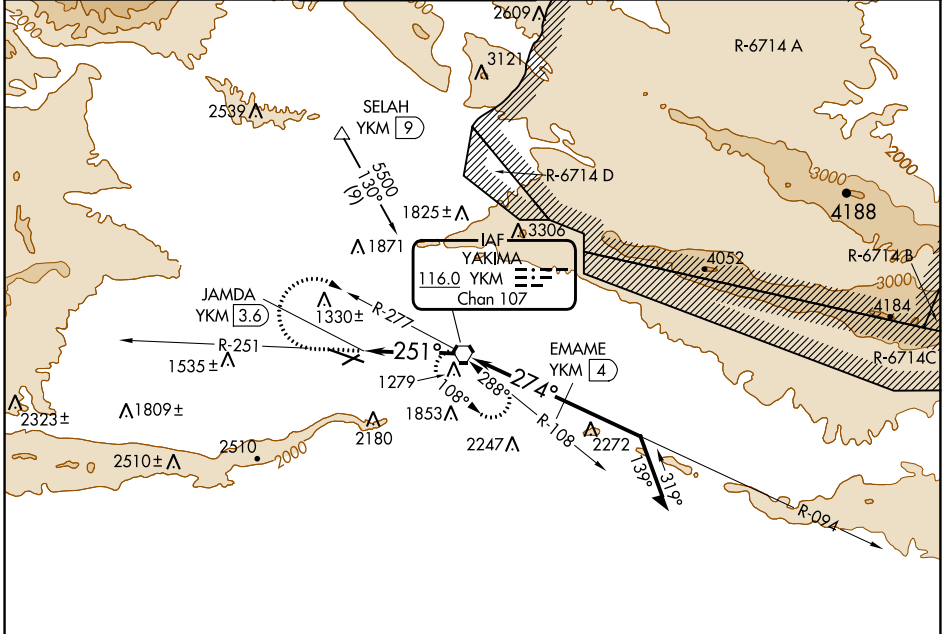
VORTAC YKM <b>116.0</b> Chan <b>107</b>	APP CRS <b>251°</b>	Rwy Idg TDZE Apt Elev <b>N/A</b> <b>N/A</b> <b>1099</b>
---	------------------------	--

# VOR-A

YAKIMA AIR TRML/MCALLISTER FLD (YKM)

<p><b>▼</b> DME required. <b>▲</b> Circling not authorized south of Rwy 9-27. When local altimeter setting not received, procedure NA.</p>	<p>MISSED APPROACH: Climb to 2600 via YKM VORTAC R-251 then climbing right turn to 4600 via YKM VORTAC R-277 to YKM VORTAC and hold, continue climb-in-hold to 4600.</p>
--	--

ATIS <b>125.25</b>	SPOKANE APP CON* <b>123.8 263.15</b>	YAKIMA TOWER* <b>133.25 (CTAF) 257.8</b>	GND CON <b>121.9</b>	CLNC DEL <b>121.9</b>	UNICOM <b>122.95</b>
-----------------------	---	---	-------------------------	--------------------------	-------------------------



<p>2600 YKM R-251</p> <p>4600 YKM R-277</p> <p>YKM</p> <p>10000</p> <p>Remain within 10 NM</p> <p>094°</p> <p>4500</p> <p>274°</p> <p>3300</p> <p>2800</p> <p>251°</p> <p>JAMDA YKM 3.6</p> <p>EMAME YKM 4</p> <p>3.6 NM</p> <p>4 NM</p>
--

FAF to MAP 3.6 NM					
Knots	60	90	120	150	180
Min:Sec	3:36	2:24	1:48	1:26	1:12

CATEGORY	A	B	C	D
<b>☑</b> CIRCLING	1840-1 741 (800-1)	1840-1¼ 741 (800-1¼)	1940-2½ 841 (900-2½)	2280-3 1181 (1200-3)

# VOR-A

NW-1, 22 FEB 2024 to 21 MAR 2024

NW-1, 22 FEB 2024 to 21 MAR 2024

VORTAC YKM <b>116.0</b> Chan 107	APP CRS <b>244°</b>	Rwy Idg TDZE Apt Elev	<b>7604</b> <b>1068</b> <b>1099</b>
--	------------------------	-----------------------------	---

# VOR/DME or TACAN RWY 27

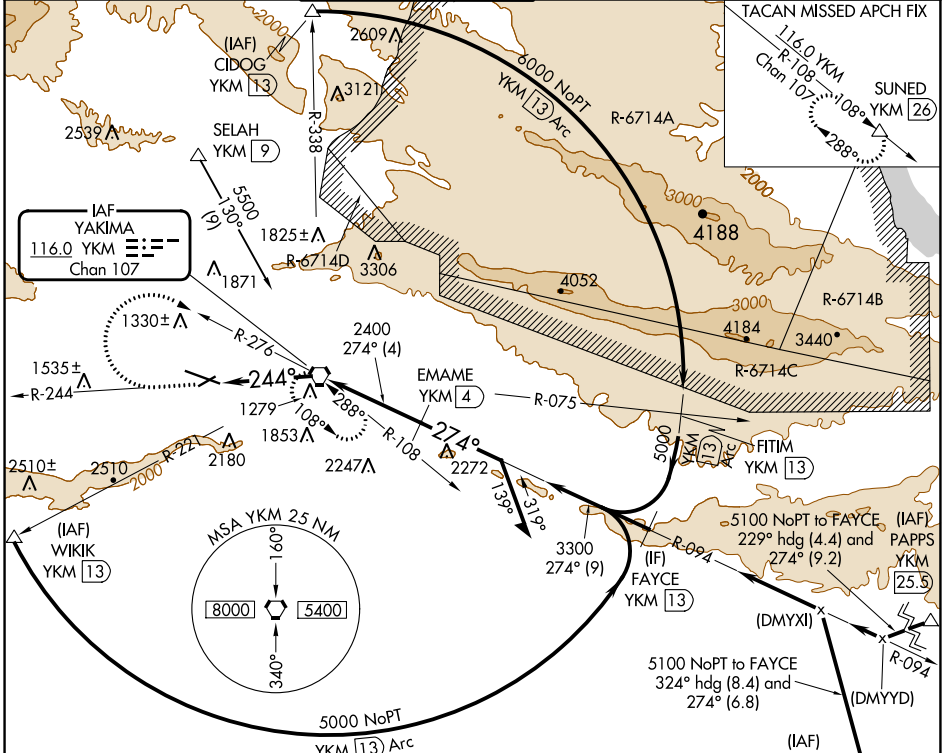
YAKIMA AIR TRML/MCALLISTER FLD (YKM)

**▼** Inoperative table does not apply.  
**▲** Circling NA south of Rwy 9-27.  
When local altimeter setting not received, procedure NA.

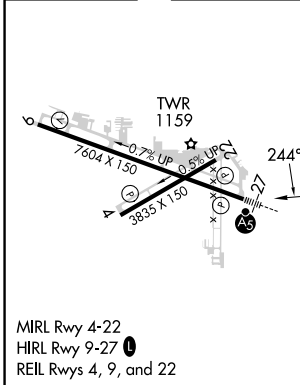


**MISSED APPROACH:** Climb to 2600 via YKM VORTAC R-244, then climbing right turn to 4600 via YKM VORTAC R-276 to YKM VORTAC and hold, continue climb-in-hold to 4600 (TACAN aircraft, continue climb to 5000 via YKM VORTAC R-108 to SUNED/YKM 26 DME and hold west, right turns, 108° inbound).

ATIS <b>125.25</b>	SPOKANE APP CON * <b>123.8 263.15</b>	YAKIMA TOWER * <b>133.25 (CTAF) 0 257.8</b>	GND CON <b>121.9</b>	CLNC DEL <b>121.9</b>	UNICOM <b>122.95</b>
-----------------------	--	--	-------------------------	--------------------------	-------------------------



ELEV 1099	<b>D</b>	TDZE 1068
-----------	----------	-----------



2600	4600	YKM	YKM VORTAC	VGSI and descent angles not coincident (VGSI Angle 3.00/TCH 57).
YKM R-244	YKM R-276	10000	094°	Remain within 10 NM
YKM 3.6	≤3.40° TCH 57	4400	274°	EMAME YKM 4
3.6 NM	4 NM	2400	244°	3300
CATEGORY	A	B	C	D
S-27	2100/60 1032 (1100-1¼)	2100-1½ 1032 (1100-1½)	2100-3	1032 (1100-3)
<b>C</b> CIRCLING	2100-1¼ 1001 (1100-1¼)	2100-1½ 1001 (1100-1½)	2100-3 1001 (1100-3)	2280-3 1181 (1200-3)

NW-1, 22 FEB 2024 to 21 MAR 2024

NW-1, 22 FEB 2024 to 21 MAR 2024