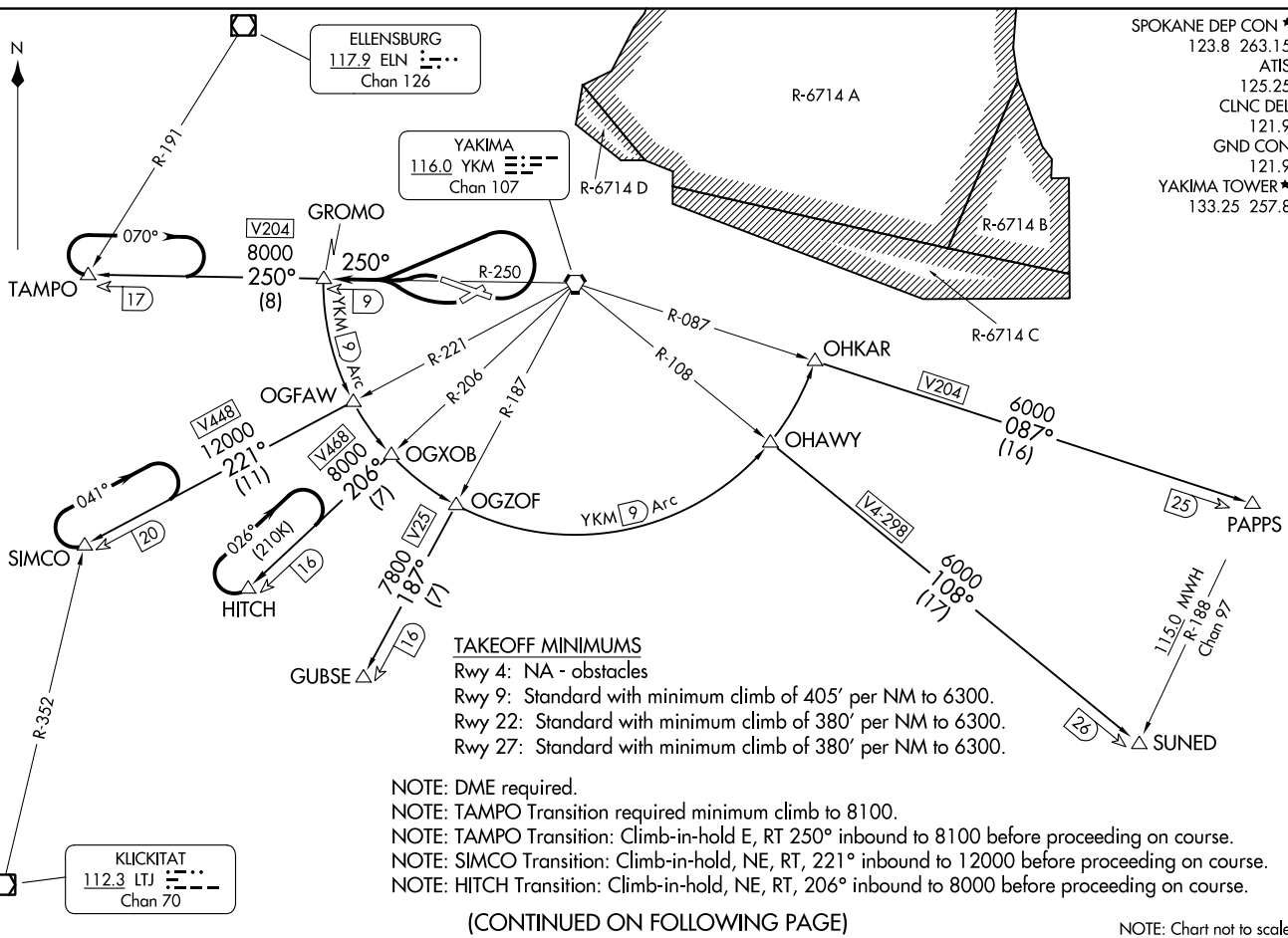


(GROMO4.GROMO) 23334
GROMO FOUR DEPARTURE

AI-465 (FAA)

YAKIMA AIR TRML/MCALLISTER FLD (YKM)
YAKIMA, WASHINGTON

SPOKANE DEP CON ★
123.8 263.15
ATIS
125.25
CLNC DEL
121.9
GND CON
121.9
YAKIMA TOWER ★
133.25 257.8



TAKEOFF MINIMUMS
 Rwy 4: NA - obstacles
 Rwy 9: Standard with minimum climb of 405' per NM to 6300.
 Rwy 22: Standard with minimum climb of 380' per NM to 6300.
 Rwy 27: Standard with minimum climb of 380' per NM to 6300.

NOTE: DME required.
 NOTE: TAMPO Transition required minimum climb to 8100.
 NOTE: TAMPO Transition: Climb-in-hold E, RT 250° inbound to 8100 before proceeding on course.
 NOTE: SIMCO Transition: Climb-in-hold, NE, RT, 221° inbound to 12000 before proceeding on course.
 NOTE: HITCH Transition: Climb-in-hold, NE, RT, 206° inbound to 8000 before proceeding on course.

(CONTINUED ON FOLLOWING PAGE)

NOTE: Chart not to scale.

GROMO FOUR DEPARTURE
(GROMO4.GROMO) 10NOV16

YAKIMA AIR TRML/MCALLISTER FLD (YKM)
YAKIMA, WASHINGTON

CLICKITAT
112.3 LTJ
Chan 70

ELLENSBURG
117.9 ELN
Chan 126

YAKIMA
116.0 YKM
Chan 107

GROMO
250°
8000
V204
(8)

TAMPO
070°
17

OGFAW
V448
12000
221°
(11)

SIMCO
041°
20

HITCH
026°
12100
(16)

GUBSE
7800
187°
(7)

OHKAR
V204
6000
087°
(16)

OHAWY
V4-298
6000
108°
(17)

SUNED
1150 MVAH
R-186
Chan 97

PAPPS
25





DEPARTURE ROUTE DESCRIPTION

TAKEOFF RUNWAYS 9, 27: Climbing left turn thence. . . .

TAKEOFF RUNWAY 22: Climbing right turn thence. . . .

. . . . intercept and proceed on YKM R-250 to GROMO/YKM 9 DME, then on assigned transition.

GUBSE TRANSITION (GROMO4.GUBSE): From over GROMO DME Fix on YKM 9 DME Arc to OGZOF DME fix and YKM VORTAC R-187 to GUBSE DME fix.

HITCH TRANSITION (GROMO4.HITCH): From over GROMO DME Fix on YKM 9 DME Arc to OGXOB DME fix and YKM VORTAC R-206 to HITCH DME fix.

PAPPS TRANSITION (GROMO4.PAPPS): From over GROMO DME Fix on YKM 9 DME Arc to OHKAR DME fix and YKM VORTAC R-087 to PAPPS DME fix.

SIMCO TRANSITION (GROMO4.SIMCO): From over GROMO DME Fix on YKM 9 DME Arc to OGFAW DME fix and YKM VORTAC R-221 to SIMCO INT.

SUNED TRANSITION (GROMO4.SUNED): From over GROMO DME Fix on YKM 9 DME Arc to OHAWY DME fix and YKM R-108 to SUNED INT.

TAMPO TRANSITION (GROMO4.TAMPO): From over GROMO DME Fix on YKM VORTAC R-250 to TAMPO INT.

NW-1, 22 FEB 2024 to 21 MAR 2024

NW-1, 22 FEB 2024 to 21 MAR 2024

**TOP ALTITUDE:
10000**

SPOKANE DEP CON*
123.8 263.15
ATIS
125.25
CLINC DEL
121.9
GND CON
121.9
YAKIMA TOWER*
133.25 257.8

SEATTLE
116.8 SEA
Chan 115

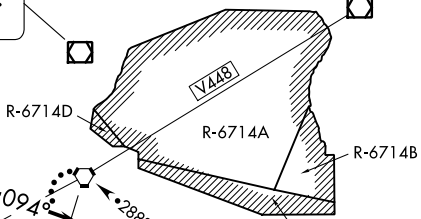
WENATCHEE
114.35 EAT
Chan 90(Y)

EPHRATA
112.6 EPH
Chan 73

MOSES LAKE
115.0 MWH
Chan 97

SPOKANE
115.5 GEG
Chan 102

ELLENSBURG
117.9 ELN
Chan 126



WALLA WALLA
116.4 ALW
Chan 111

BATTLE GROUND
116.6 BTG
Chan 113

YAKIMA
116.0 YKM
Chan 107

PASCO
113.75 PSC
Chan 84(Y)

KLUCKITAT
112.3 LTJ
Chan 70

PENDLETON
114.7 PDT
Chan 94



NACHES FOUR DEPARTURE

YAKIMA AIR TRML/MCALISTER FLD (YKM)

NACHES FOUR DEPARTURE

YAKIMA AIR TRML/MCALISTER FLD (YKM)

TAKEOFF MINIMUMS

- Rwy 4: NA-obstacles.
- Rwy 9: Standard with minimum climb of 360' per NM to 4400.
- Rwy 22: Standard with minimum climb of 495' per NM to 6000.
- Rwy 27: Standard with minimum climb of 495' per NM to 6000.

NOTE: RADAR required.

(CONTINUED ON FOLLOWING PAGE)

NOTE: Chart not to scale.



DEPARTURE ROUTE DESCRIPTION

TAKEOFF RUNWAY 9: Climb heading 094° for vector to assigned route/fix. Thence

TAKEOFF RUNWAYS 22, 27: Climbing right turn heading 320° for vector to assigned route/fix. Thence

. . . . maintain 10000 or assigned lower altitude. Expect clearance to filed altitude 5 minutes after departure.

LOST COMMUNICATIONS

If no transmissions are received for one minute after departure:

RUNWAY 9: Climb heading 094° and outbound YKM VORTAC R-108.

RUNWAYS 22, 27: Climbing right turn direct YKM VORTAC and outbound YKM R-108, eastbound aircraft V4-V298 continue on course, all other departures continue climb on YKM R-108, until 4600, then climbing right turn direct YKM VORTAC and hold to cross YKM VORTAC at or above MEA or MCA for route of flight.

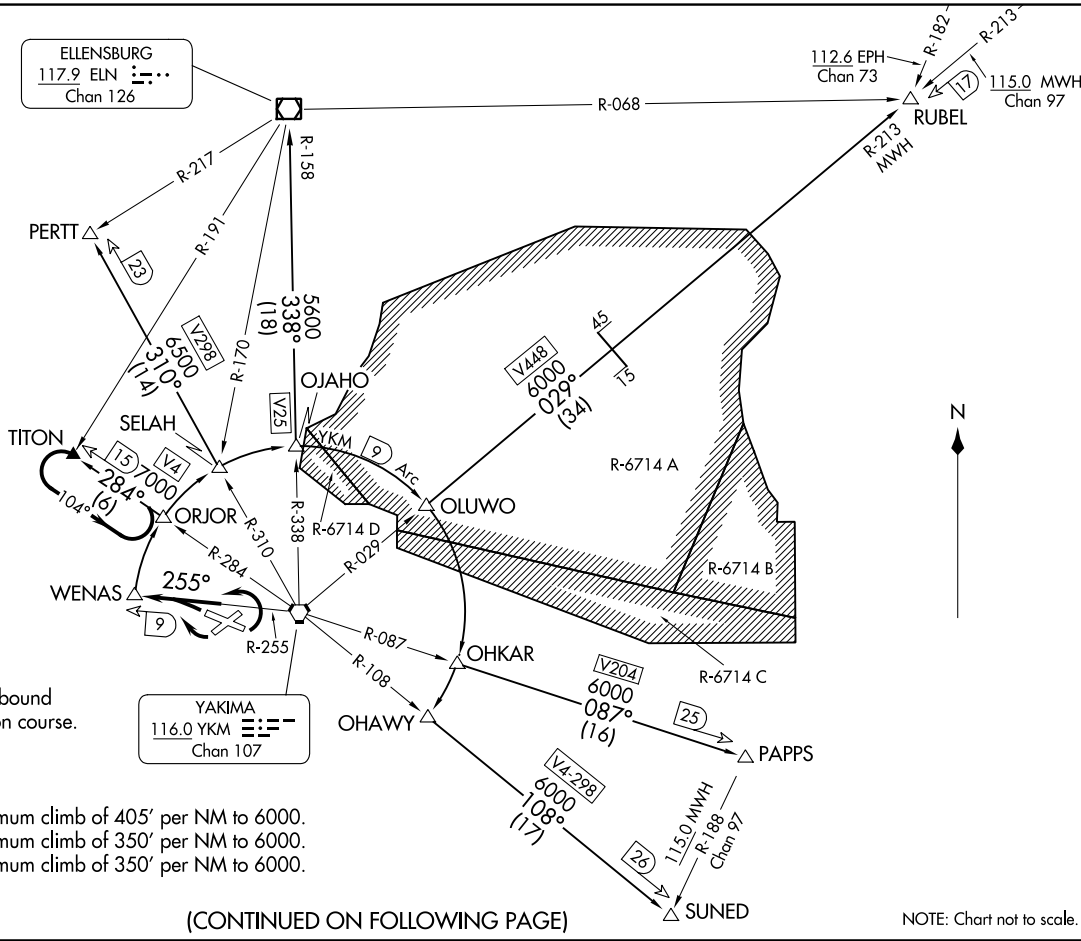
NW-1, 22 FEB 2024 to 21 MAR 2024

NW-1, 22 FEB 2024 to 21 MAR 2024

WENAS SEVEN DEPARTURE
(WENAS7.WENAS) 10NOV16

YAKIMA AIR TRML/MCALLISTER FLD (YKYM)
YAKIMA, WASHINGTON

SPOKANE DEP CON ★
123.8 263.15
ATIS
125.25
CLNC DEL
121.9
GND CON
121.9
YAKIMA TOWER ★
133.25 257.8



NOTE: DME required.

NOTE: TITON Transition:
Climb-in-hold, E, LT, 284° inbound
to 7000 before proceeding on course.

TAKEOFF MINIMUMS

- Rwy 4: NA - Obstacles
- Rwy 9: Standard with minimum climb of 405' per NM to 6000.
- Rwy 22: Standard with minimum climb of 350' per NM to 6000.
- Rwy 27: Standard with minimum climb of 350' per NM to 6000.

(CONTINUED ON FOLLOWING PAGE)

NOTE: Chart not to scale.

(WENAS7.WENAS) 23334
WENAS SEVEN DEPARTURE

AL-465 (FAA)

YAKIMA AIR TRML/MCALLISTER FLD (YKYM)
YAKIMA, WASHINGTON



DEPARTURE ROUTE DESCRIPTION

TAKEOFF RUNWAYS 9, 27: Climbing left turn thence. . . .

TAKEOFF RUNWAY 22 : Climbing right turn thence. . . .

. . . .intercept and proceed on YKM VORTAC R-255 to WENAS/YKM 9 DME, then on assigned transition.

ELLENSBURG TRANSITION (WENAS7.ELN): From over WENAS DME Fix on YKM 9 DME Arc to OJAHO DME fix and YKM VORTAC R-338 and ELN VOR/DME R-158 to ELN VOR/DME.

PAPPS TRANSITION (WENAS7.PAPPS): From over WENAS DME Fix on YKM 9 DME Arc to OHKAR DME fix and YKM VORTAC R-087 to PAPPS INT.

PERTT TRANSITION (WENAS7.PERTT): From over WENAS DME Fix on YKM 9 DME Arc to SELAH DME fix and YKM VORTAC R-310 to PERTT INT.

RUBEL TRANSITION (WENAS7.RUBEL): From over WENAS DME Fix on YKM 9 DME Arc to OLUWO DME fix and YKM VORTAC R-029 and MWH VOR/DME R-213 to RUBEL INT.

SUNED TRANSITION (WENAS7.SUNED): From over WENAS DME Fix on YKM 9 DME Arc to OHAWY DME fix and YKM VORTAC R-108 to SUNED INT.

TITON TRANSITION (WENAS7.TITON): From over WENAS DME Fix on YKM 9 DME Arc to ORJOR DME fix and YKM VORTAC R-284 to TITON INT.

NW-1, 22 FEB 2024 to 21 MAR 2024

NW-1, 22 FEB 2024 to 21 MAR 2024

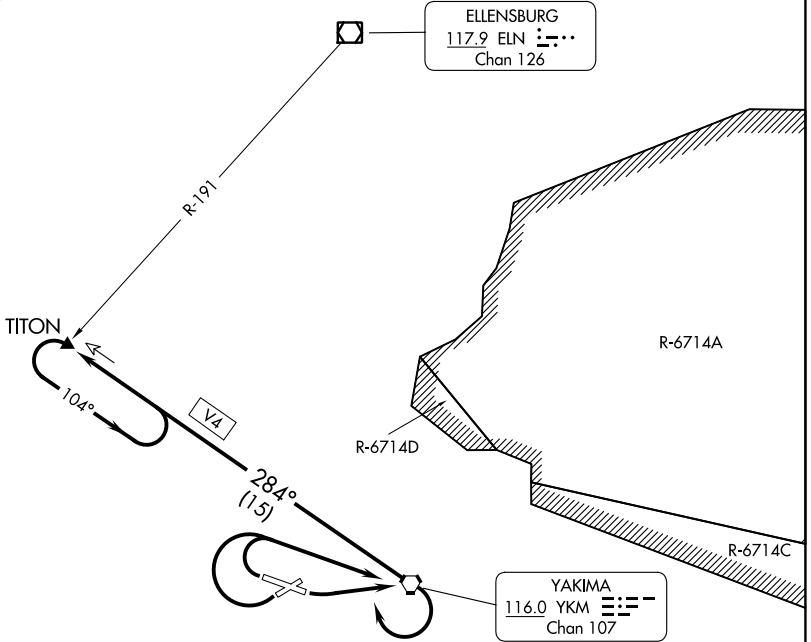
(YKM7.YKM) 23334

YAKIMA SEVEN DEPARTURE

AL-465 (FAA)

YAKIMA AIR TRML/MCALLISTER FLD (YKM)
YAKIMA, WASHINGTON

SPOKANE DEP CON ★
123.8 263.15
ATIS
125.25
CLNC DEL
121.9
GND CON
121.9
YAKIMA TOWER ★
133.25 257.8



NW-1, 22 FEB 2024 to 21 MAR 2024

NW-1, 22 FEB 2024 to 21 MAR 2024

TAKEOFF MINIMUMS

- Rwy 4: NA - obstacles.
- Rwy 9: Standard with minimum climb of 325' per NM to 5000.
- Rwy 22: Standard with minimum climb of 325' per NM to 5000.
- Rwy 27: Standard with minimum climb of 325' per NM to 5000.

NOTE: Chart not to scale.



DEPARTURE ROUTE DESCRIPTION

TAKEOFF RUNWAY 9: Climbing left turn direct YKM VORTAC, Thence. . . .

TAKEOFF RUNWAYS 22, 27: Climbing right turn direct YKM VORTAC. Thence. . . .

. . . .then climbing right turn to intercept YKM R-284 outbound to TITON INT and hold.
Continue climb in hold to MEA/MCA for route of flight. Then on (assigned route).

YAKIMA SEVEN DEPARTURE
(YKM7.YKM) 10NOV16

YAKIMA, WASHINGTON
YAKIMA AIR TRML/MCALLISTER FLD (YKM)