

LAS VEGAS APP CON
125.475 307.25
HND ATIS
120.775
VGT ATIS
118.05
HENDERSON TOWER *
125.1
NORTH LAS VEGAS TOWER *
125.7 360.75

NORTH LAS VEGAS

HENDERSON EXEC

NTNDO
7000

Ldg KHND, KVGT

KEEKO
7200

KONNG
10000 250K

TETRS
13000

10000
*7900
291°
(46)

BYSEN
FL240

FL240
270°
(34)

GUILE

MISEN
13000
*6500
081°
(25)

LINCK

13000
*9200
064°
(41)

ZELMA
15000
13000
*7400
012°
(29)

JOTNU
15000
*6900
030°
(18)

TWENTYNINE PALMS
TNP

NOTE: RADAR required.
NOTE: RNAV 1.
NOTE: DME/DME/IRU/ or GPS required.
NOTE: TNP transition: for non-GPS equipped aircraft
IPL and TNP DMEs must be operational.

NOTE: Chart not to scale.

ARRIVAL ROUTE DESCRIPTION

GUILE TRANSITION (GUILE.NTND01)

MISEN TRANSITION (MISEN.NTND01)

TWENTYNINE PALMS TRANSITION (TNP.NTND01)

LANDING KHND/KVGT: From KONNG on track 328° to cross KEEKO at or above 7200, then on track 328° to cross NTNDO at 7000, then on track 304°. Expect RADAR vectors to final approach course.

SW-4, 22 FEB 2024 to 21 MAR 2024

SW-4, 22 FEB 2024 to 21 MAR 2024

NELLIS APP CON
118.125 291.725
ATIS
118.05
NORTH LAS VEGAS TOWER ★
125.7 360.75

(FLCHR:FLCHR1) 21056
FLCHR ONE ARRIVAL (RNAV)

AL-6970 (FAA)

NORTH LAS VEGAS (VGT)
LAS VEGAS, NEVADA

N

FLCHR

131°
(26)

OPNOW

094°
(32)

GEOOF

081°
(12)

KEEKE
10500 250K

101°
(7)

ECAKO
9000 230K
Ldg KVGT

117°

- NOTE: RADAR required.
- NOTE: RNAV 1.
- NOTE: GPS required.
- NOTE: Turbojet and turboprop aircraft only.
- NOTE: Chart not to scale.

ARRIVAL ROUTE DESCRIPTION

From FLCHR on track 131° to OPNOW, then on track 094° to GEOOF, then on track 081° to cross KEEKE at or above 10500 and at or below 250K, then on track 101° to cross ECAKO at 9000 and at or below 230K, then on track 117°. Expect RADAR vectors to final approach course.

FLCHR ONE ARRIVAL (RNAV)
(FLCHR:FLCHR1) 25FEB21

LAS VEGAS, NEVADA
NORTH LAS VEGAS (VGT)

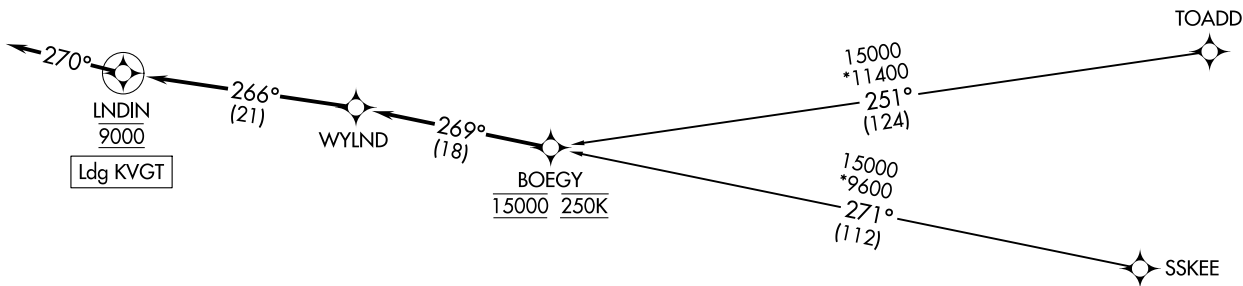
LAS VEGAS APP CON
119.4 360.85
ATIS
118.05
NORTH LAS VEGAS TOWER ★
125.7 360.75

(BOEGY.WYLND1) 21056

AL-6970 (FAA)

NORTH LAS VEGAS (TGT)
LAS VEGAS, NEVADA

N



WYLND ONE ARRIVAL (RNAV)
(BOEGY.WYLND1) 25FEB21

LAS VEGAS, NEVADA
NORTH LAS VEGAS (TGT)

- NOTE: RADAR required.
- NOTE: RNAV 1.
- NOTE: DME/DME/IRU or GPS required.
- NOTE: For non-GPS equipped aircraft, BLD, DRK, EED, FLG, GCN, IGM, PGA, PGS, and TBC DMEs must be operational.

NOTE: Chart not to scale.

ARRIVAL ROUTE DESCRIPTION

SSKEE TRANSITION (SSKEE.WYLND1)

TOADD TRANSITION (TOADD.WYLND1)

From BOEGY on track 269° to WYLND, then on track 266° to cross LNDIN at 9000, then on track 270°. Expect RADAR vectors to final approach course.