

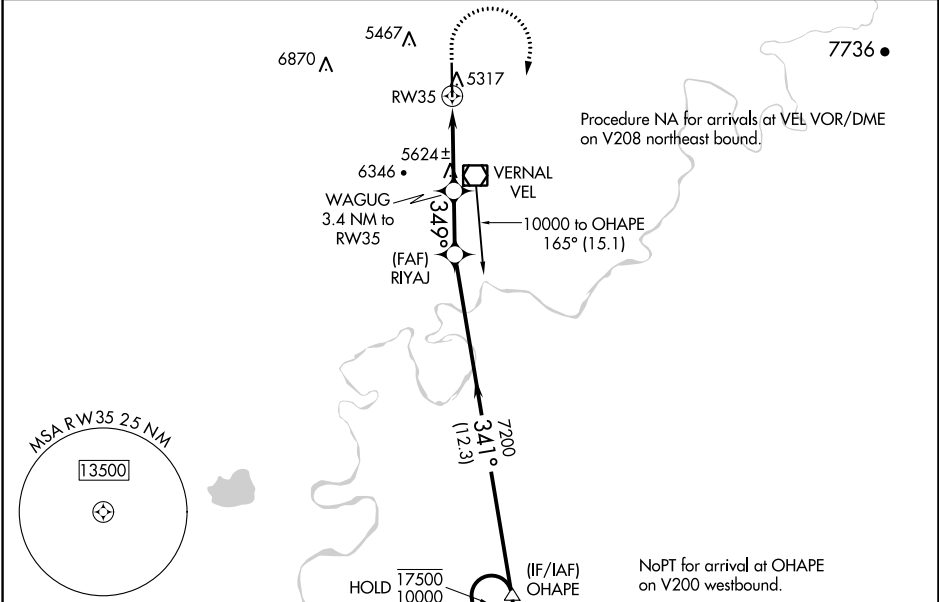
RNAV (GPS) Y RWY 35

VERNAL RGNL (VEL)

APP CRS	Rwy Idg	7000
349°	TDZE	5274
	Apt Elev	5274

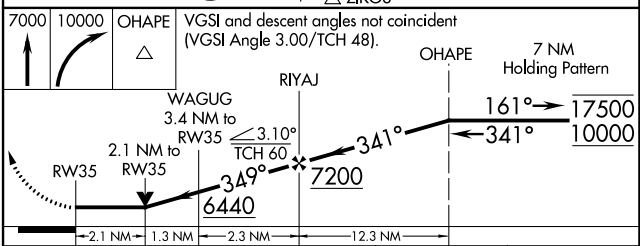
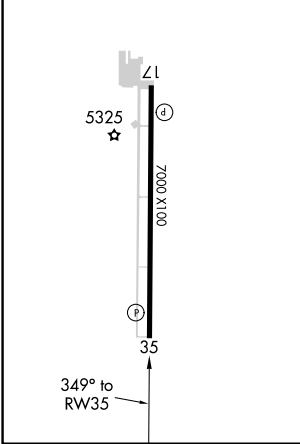
RNP APCH.	MISSED APPROACH: Climb to 7000 then climbing right turn to 10000 direct OHAPE and hold. *Missed approach requires minimum climb of 300 feet per NM to 7500.
<p>⚠ Circling NA west of Rwy 17-35. Rwy 35 helicopter visibility reduction below 3/4 NA.</p>	

ASOS 118.125	SALT LAKE CENTER 119.95 377.15	UNICOM 122.7 (CTAF)
------------------------	------------------------------------------	-------------------------------



ELEV 5274	D TDZE 5274
-----------	--------------------

REIL Rwy 17 and 35
MIRL Rwy 17-35



CATEGORY	A	B	C	D
LNAV MDA*	5980-1	706 (800-1)	5980-2	706 (800-2)
LNAV MDA	6380-1 1/4 1106 (1200-1 1/4)	6380-1 1/2 1106 (1200-1 1/2)	6380-3	1106 (1200-3)
C CIRCLING	6380-1 1/4 1106 (1200-1 1/4)	6380-1 1/2 1106 (1200-1 1/2)	6380-3 1106 (1200-3)	6400-3 1126 (1200-3)

RNAV (GPS) Y RWY 35

SW-4, 12 AUG 2021 to 09 SEP 2021

SW-4, 12 AUG 2021 to 09 SEP 2021

WAAS CH 90241 W35A	APP CRS 349°	Rwy Idg TDZE Apt Elev	7000 5274 5274
----------------------------------------	------------------------	-----------------------------	-------------------------------------------

RNAV (GPS) Z RWY 35

VERNAL RGNL (VEL)

RNP APCH.

- ▼ Rwy 35 helicopter visibility reduction below ¼ SM NA.
- ▲ For uncompensated Baro-VNAV systems, procedure NA below -21°C or above 54°C.

MISSED APPROACH: Climb to 7000 then climbing right turn to 10000 direct OHAPE and hold.
*Missed approach requires minimum climb of 290 feet per NM to 8600.

ASOS 118.125	SALT LAKE CENTER 119.95 377.15	UNICOM 122.7 (CTAF)
------------------------	------------------------------------------	-------------------------------

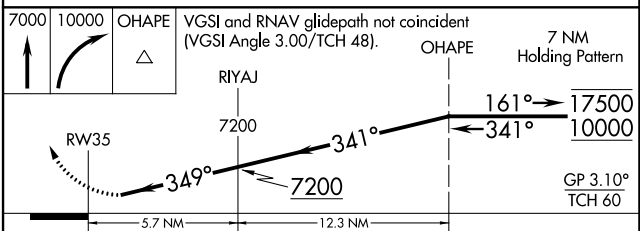
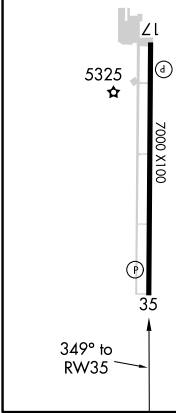


SW-4, 12 AUG 2021 to 09 SEP 2021

SW-4, 12 AUG 2021 to 09 SEP 2021

ELEV 5274	D	TDZE 5274
------------------	----------	------------------

REIL Rws 17 and 35
MIRL Rwy 17-35



CATEGORY	A	B	C	D
LPV DA*	5610-1 336 (400-1)			
LPV DA	6175-2½ 901 (1000-2½)			
LNNAV/VNAV DA*	5786-1⅜ 512 (600-1⅜)			
LNNAV/VNAV DA	6093-2½ 819 (900-2½)			

VOR/DME VEL 108.2 Chan 19	APP CRS 329°	Rwy Idg TDZE Apt Elev 7000 5274 5274
----------------------------------------	------------------------	--------------------------------------------------------------------------

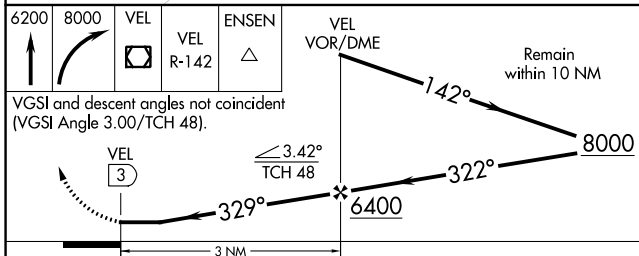
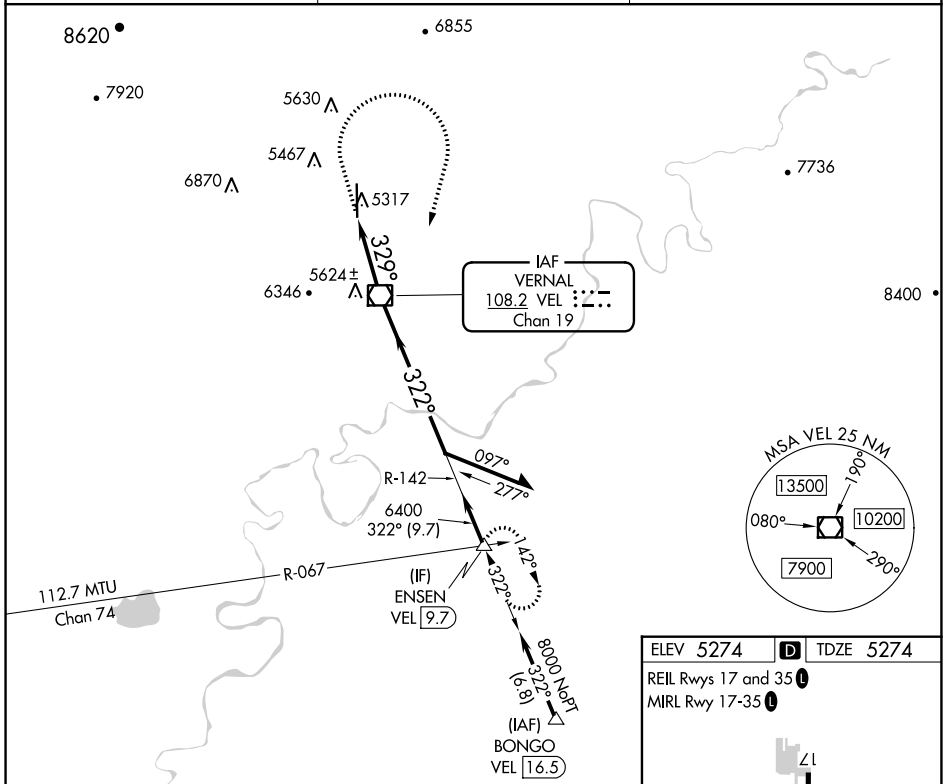
VOR RWY 35

VERNAL RGNL (VEL)

⚠ Circling NA west of Rwy 17-35.
Rwy 35 helicopter visibility reduction below ¼ NA.

⚠ MISSED APPROACH: Climb to 6200 then climbing right turn to 8000 direct VEL VOR/DME and on VEL VOR/DME R-142 to ENSEN INT/9.7 DME and hold.

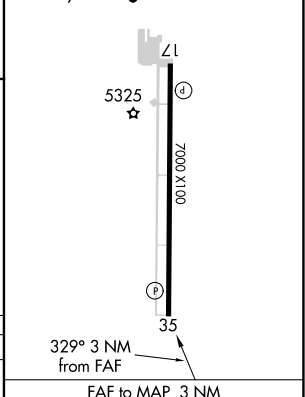
ASOS 118.125	SALT LAKE CENTER 119.95 377.15	UNICOM 122.7 (CTAF) 0
------------------------	------------------------------------------	---------------------------------



ELEV 5274 **D** TDZE 5274

REIL Rws 17 and 35 **⚠**

MIRL Rwy 17-35 **⚠**



CATEGORY	A	B	C	D
S-35	6160-1¼ 886 (900-1¼)	6160-2½ 886 (900-2½)		
C CIRCLING	6160-1¼ 886 (900-1¼)	6160-2¾ 886 (900-2¾)	6400-3 1126 (1200-3)	

Knots	60	90	120	150	180
Min:Sec	3:00	2:00	1:30	1:12	1:00

SW-4, 12 AUG 2021 to 09 SEP 2021

SW-4, 12 AUG 2021 to 09 SEP 2021