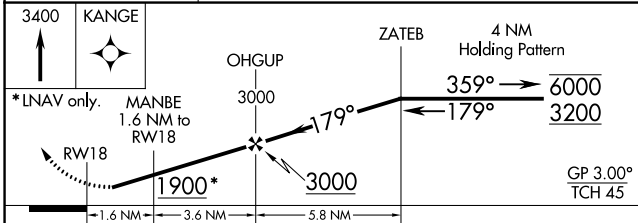
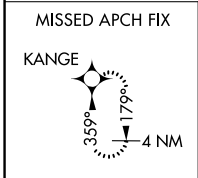
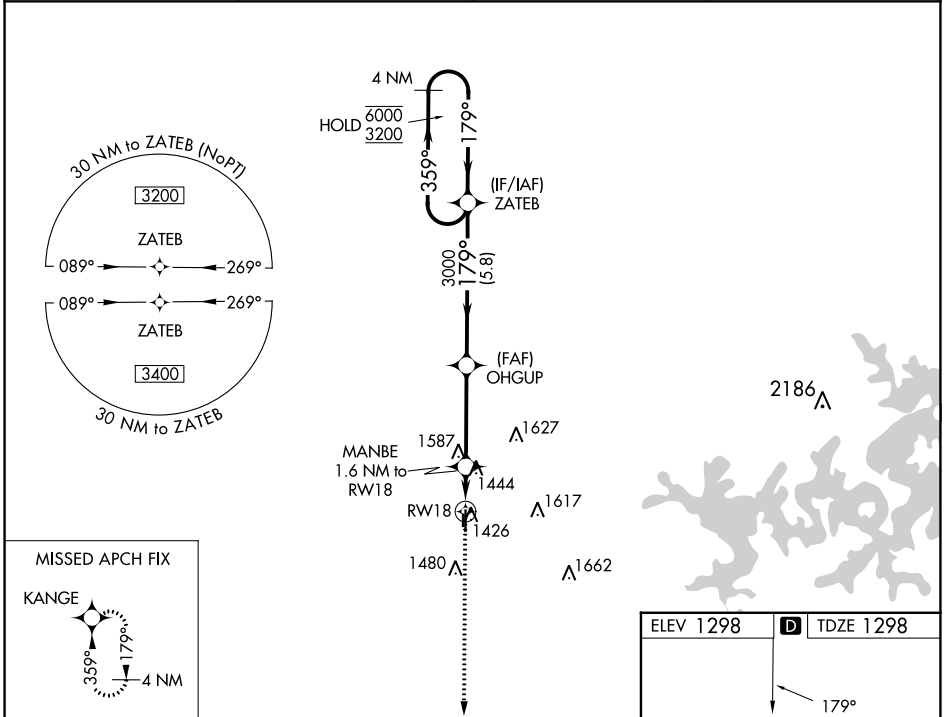


WAAS CH 77830 W18A	APP CRS 179°	Rwy Idg TDZE 1298 Apt Elev 1298
--	------------------------	---

RNAV (GPS) RWY 18

BENTONVILLE MUNI/LOUISE M THADEN FLD (VBT)

RNP APCH.		MISSED APPROACH: Climb to 3400 direct KANGE and hold.	
<p>⚠ Circling NA to Rwy 17 and 35. Rwy 18 helicopter visibility reduction below 3/4 SM NA. For uncompensated Baro-VNAV systems, LNAV/VNAV NA below -17°C or above 54°C.</p>			
AWOS-3PT 134.975	RAZORBACK APP CON ★ 121.0 (WEST) 244.575	CLNC DEL 121.05 263.125	UNICOM 122.975 (CTAF) L



ELEV 1298	D TDZE 1298
<p>MIRL Rwy 18-36 L REL Rwy 18 and 36</p>	

CATEGORY	A	B	C	D
LPV DA		1548-1	250 (300-1)	
LNAV/VNAV DA		1688-1 1/8	390 (400-1 1/8)	
LNAV MDA	1700-1	402 (500-1)	1700-1 1/8	402 (500-1 1/8)
C CIRCLING	1780-1	482 (500-1)	1920-1 3/4 622 (700-1 3/4)	1940-2 642 (700-2)

SC-1, 22 FEB 2024 to 21 MAR 2024

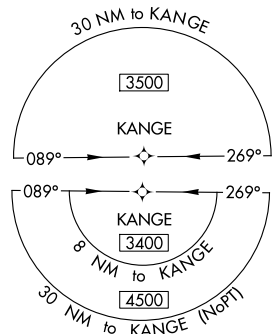
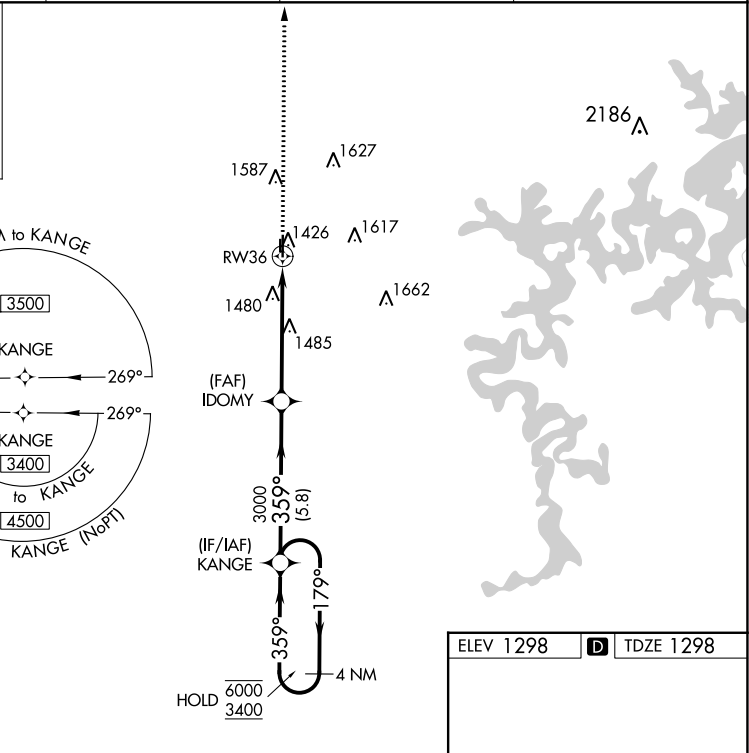
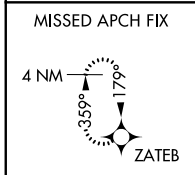
SC-1, 22 FEB 2024 to 21 MAR 2024

WAAS CH 53729 W36A	APP CRS 359°	Rwy Idg TDZE 1298 Apt Elev 1298	4196
--	------------------------	---	-------------

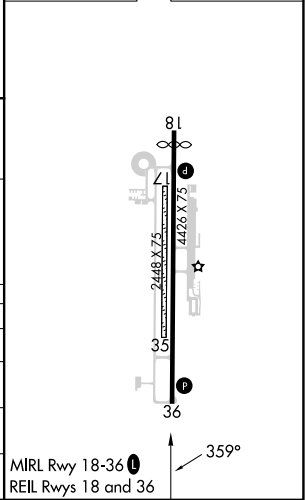
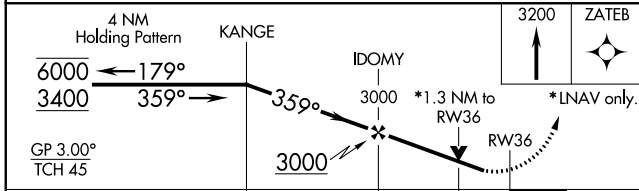
RNAV (GPS) RWY 36

BENTONVILLE MUNI/LOUISE M THADEN FLD (VBT)

RNP APCH.		MISSED APPROACH: Climb to 3200 direct ZATEB and hold.	
AWOS-3PT 134.975	RAZORBACK APP CON ★ 121.0 (WEST) 244.575	CLNC DEL 121.05 263.125	UNICOM 122.975 (CTAF) 0



ELEV 1298	D TDZE 1298
-----------	--------------------



CATEGORY	A	B	C	D
LPV DA	1548-1		250 (300-1)	
LNAV/VNAV DA	1672-1		374 (400-1)	
LNAV MDA	1780-1	482 (500-1)	1780-1 $\frac{3}{8}$	482 (500-1 $\frac{1}{8}$)
C CIRCLING	1780-1	482 (500-1)	1920-1 $\frac{3}{4}$ 622 (700-1 $\frac{3}{4}$)	1940-2 642 (700-2)

MIRL Rwy 18-36 **0**
REIL Rwys 18 and 36

SC-1, 22 FEB 2024 to 21 MAR 2024

SC-1, 22 FEB 2024 to 21 MAR 2024