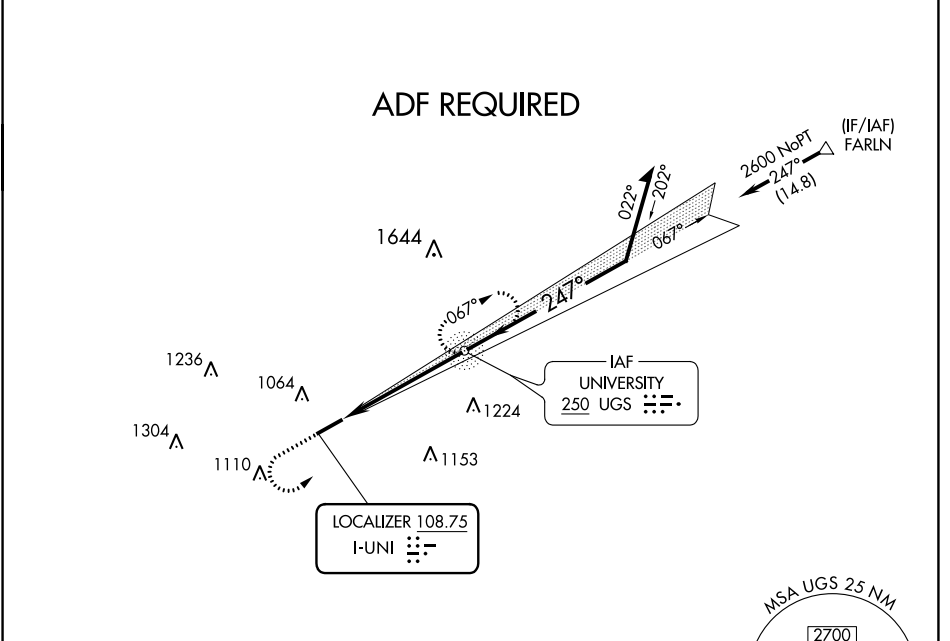


LOC I-UNI 108.75	APP CRS 247°	Rwy Idg TDZE Apt Elev	5600 765 766
----------------------------	------------------------	-----------------------------	---

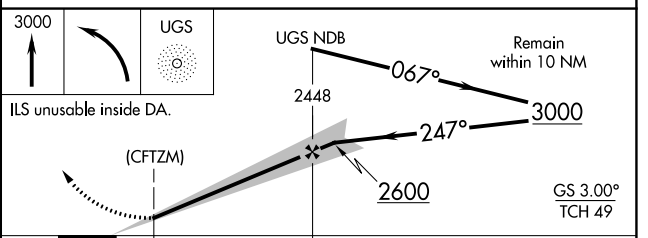
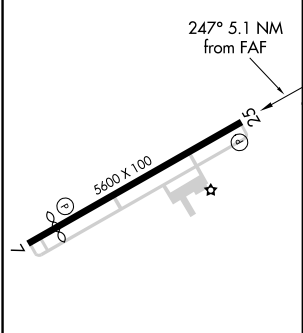
ILS or LOC RWY 25
OHIO UNIVERSITY (UNI)

<p>▽ ADF required.</p> <p>△ NA</p>	<p>MISSED APPROACH: Climb to 3000 then left turn direct UGS NDB and hold.</p>
------------------------------------	---

AWOS-3 128.325	HUNTINGTON APP CON 120.95 270.1	CLNC DEL 120.95	UNICOM 123.075 (CTAF)
--------------------------	---	---------------------------	---------------------------------



ELEV 766	TDZE 765
-----------------	-----------------



MIRL Rwy 7-25	REIL Rwys 7 and 25	FAF to MAP 4.6 NM			
Knots	60	90	120	150	180
Min:Sec	4:36	3:04	2:18	1:50	1:32
CIRCLING	1420-1	654 (700-1)	1420-1 $\frac{7}{8}$	654 (700-1 $\frac{7}{8}$)	1480-2 $\frac{1}{4}$ 714 (800-2 $\frac{1}{4}$)

EC-2, 02 DEC 2021 to 30 DEC 2021

EC-2, 02 DEC 2021 to 30 DEC 2021

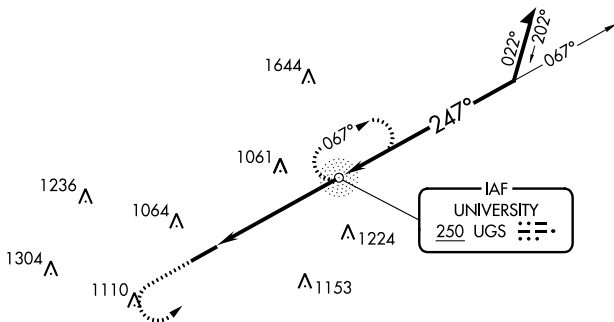
NDB UGS	APP CRS	Rwy Idg	5600
250	247°	TDZE	765
		Apt Elev	766

NDB RWY 25

OHIO UNIVERSITY (UNI)

RADAR required for procedure entry.		MISSED APPROACH: Climb to 3000 then left turn direct UGS NDB and hold.	
▼ ▲ NA			

AWOS-3 128.325	HUNTINGTON APP CON 120.95 270.1	CLNC DEL 120.95	UNICOM 123.075 (CTAF) 0
--------------------------	---	---------------------------	-----------------------------------



EC-2, 02 DEC 2021 to 30 DEC 2021

EC-2, 02 DEC 2021 to 30 DEC 2021

ELEV 766	TDZE 765
----------	----------

247° 5.1 NM from FAF

MIRL Rwy 7-25
REIL Rwys 7 and 25

FAF to MAP 5.1 NM					
Knots	60	90	120	150	180
Min:Sec	5:06	3:24	2:33	2:02	1:42

3000	UGS	UGS NDB	Remain within 10 NM
------	-----	---------	---------------------

VGSI and descent angles not coincident (VGSI Angle 3.00/TCH 50).

3.16° TCH 41

CATEGORY	A	B	C	D
S-25	1380-1	615 (700-1)	1380-1¾	615 (700-1¾)
<input checked="" type="checkbox"/> CIRCLING	1380-1	1420-1	1420-1¾	1480-2¼
	614 (700-1)	654 (700-1)	654 (700-1¾)	714 (800-2¼)

WAAS CH 90316 W25A	APP CRS 247°	Rwy ldg 5600 TDZE 765 Apt Elev 766
--	------------------------	---

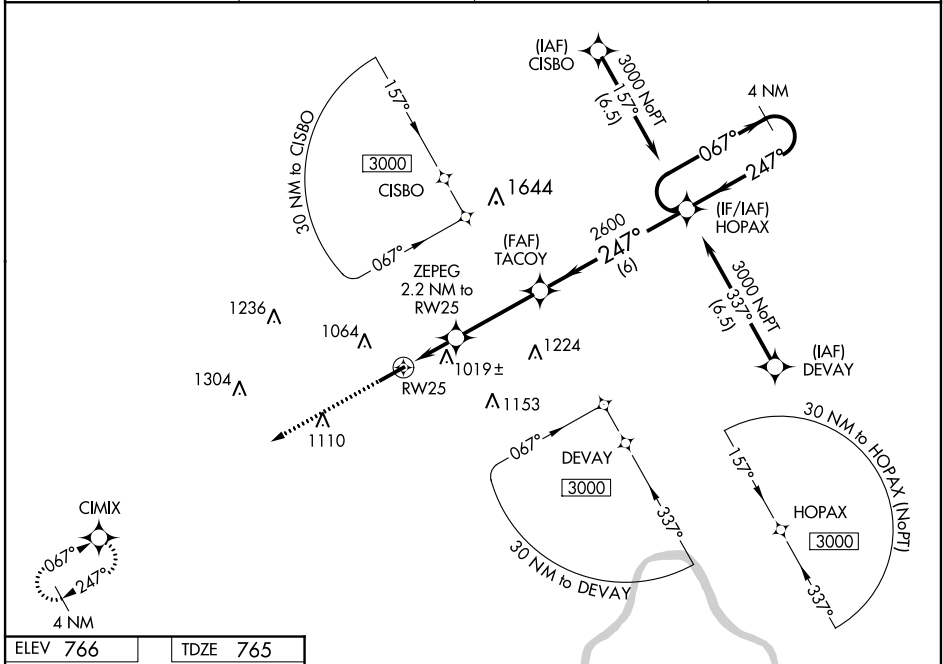
RNAV (GPS) RWY 25

OHIO UNIVERSITY (UNI)

⚠ For uncompensated Baro-VNAV systems, LNAV/VNAV NA below -16°C (4°F) or above 54°C (130°F). DME/DME RNP-0.3 NA.

MISSED APPROACH:
Climb to 3000 direct CIMIX and hold.

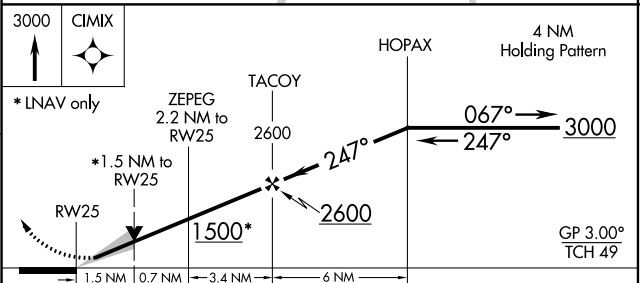
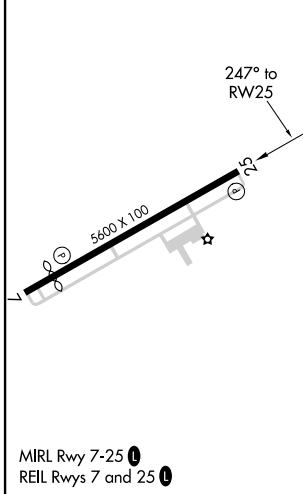
AWOS-3 128.325	HUNTINGTON APP CON 120.95 270.1	CLNC DEL 120.95	UNICOM 123.075 (CTAF) ①
--------------------------	---	---------------------------	-----------------------------------



EC-2, 02 DEC 2021 to 30 DEC 2021

EC-2, 02 DEC 2021 to 30 DEC 2021

ELEV 766	TDZE 765
-----------------	-----------------



CATEGORY	A	B	C	D
LPV DA		965-3/4	200 (200-3/4)	
LNAV/VNAV DA		1356-2	591 (600-2)	
LNAV MDA	1280-1	515 (600-1)	1280-1 3/8	515 (600-1 3/8)
C CIRCLING	1380-1	614 (700-1)	1420-1 3/4 654 (700-1 3/4)	1480-2 1/4 714 (800-2 1/4)

WAAS CH 81916 W07A	APP CRS 067°	Rwy ldg 4700 TDZE 765 Apt Elev 766
--	------------------------	---

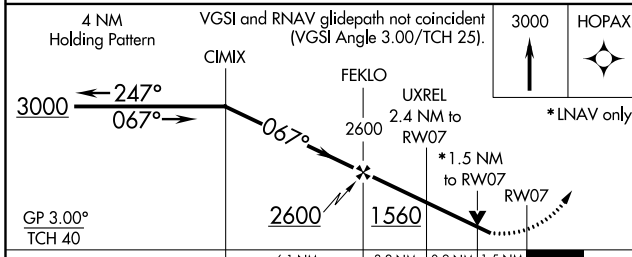
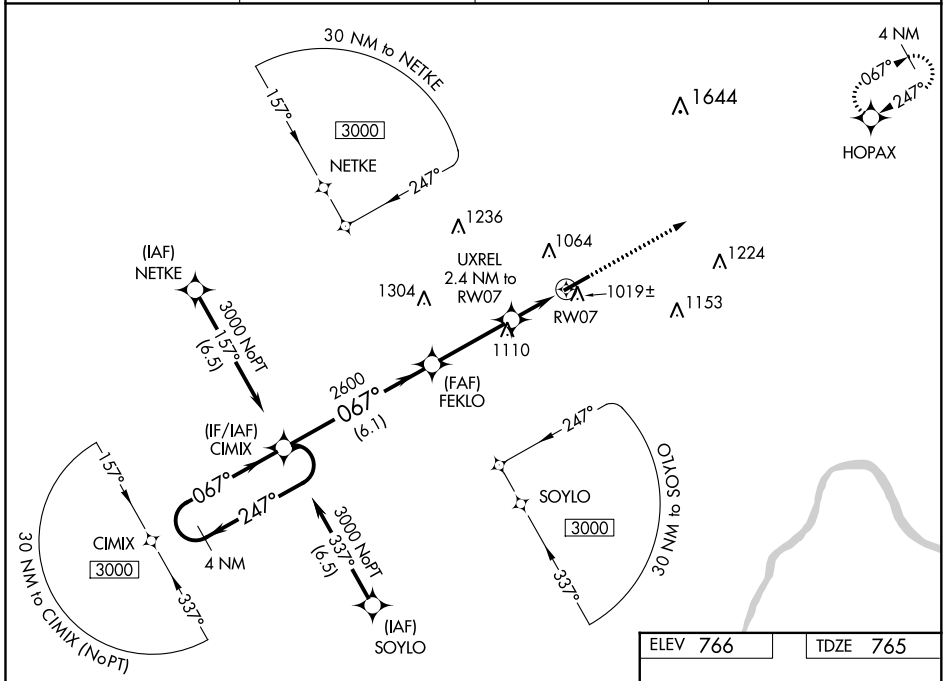
RNAV (GPS) RWY 7

OHIO UNIVERSITY (UNI)

⚠ For uncompensated Baro-VNAV systems, LNAV/VNAV NA below -1.6°C (4°F) or above 54°C (130°F). DME/DME RNP-0.3 NA. Rwy 7 helicopter visibility reduction below ¾ SM NA.

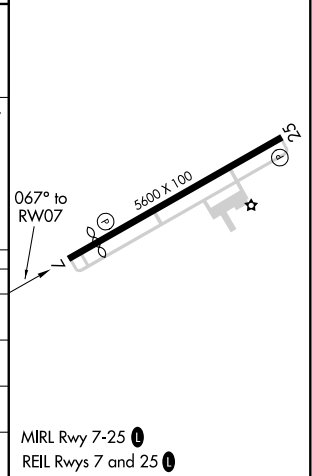
MISSED APPROACH: Climb to 3000 direct HOPAX and hold.

AWOS-3 128.325	HUNTINGTON APP CON 120.95 270.1	CLNC DEL 120.95	UNICOM 123.075 (CTAF) 0
--------------------------	---	---------------------------	-----------------------------------



ELEV 766	TDZE 765
-----------------	-----------------

CATEGORY	A	B	C	D
LPV DA	1184-1½		419 (500-1½)	
LNAV/VNAV DA	1202-1½		437 (500-1½)	
LNAV MDA	1280-1	515 (600-1)	1280-1¾	515 (600-1¾)
C CIRCLING	1380-1	614 (700-1)	1420-1¾	1480-2¼
			654 (700-1¾)	714 (800-2¼)



EC-2, 02 DEC 2021 to 30 DEC 2021

EC-2, 02 DEC 2021 to 30 DEC 2021