

WAAS CH 90521 W24A	APP CRS 241°	Rwy Idg TDZE Apf Elev	4400 1073 1073
--	------------------------	-----------------------------	---

RNAV (GPS) RWY 24

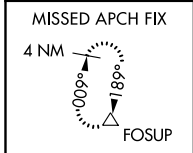
RICHARD B HELGESON (TWM)

RNP APCH.

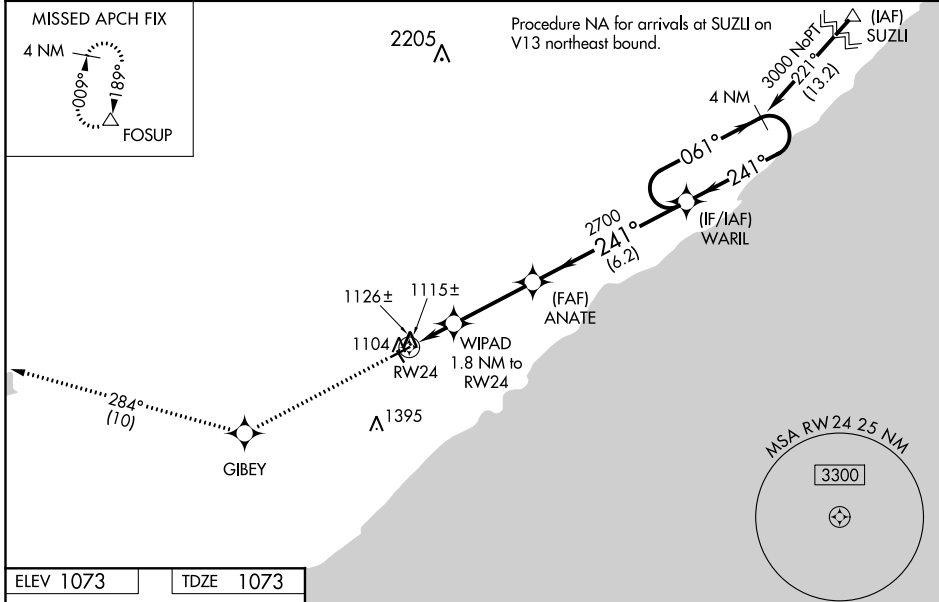
Baro-VNAV NA when using Silver Bay Muni altimeter setting. For uncompensated Baro-VNAV systems, LNAV/VNAV NA below -17°C or above 54°C. When local altimeter setting not received, use Silver Bay Muni altimeter setting and increase all DA 44 feet and all MDA 60 feet. Increase LPV and LNAV/VNAV Cats A/B visibility 1/8 mile. Rwy 24 helicopter visibility reduction below 3/4 SM NA. VDP NA with Silver Bay Muni altimeter setting. Circling to Rwy 15, 33 NA.

MISSED APPROACH: Climb to 3600 direct GIBEY and on track 284° to FOSUP and hold.

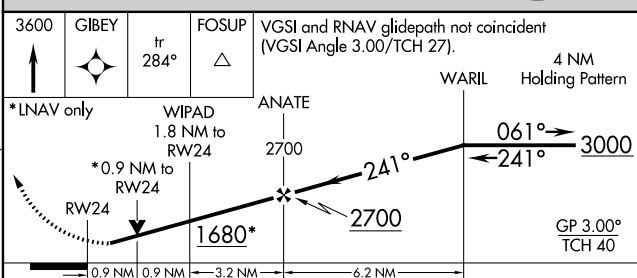
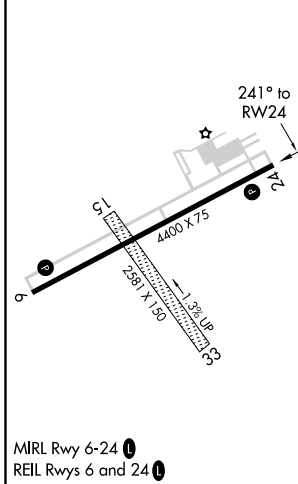
AWOS-3 119.325	DULUTH APP CON 125.45 233.7	GCO 121.725	CTAF 122.90
--------------------------	---------------------------------------	-----------------------	-----------------------



Procedure NA for arrivals at SUZLI on V13 northeast bound. (IAF) SUZLI



ELEV 1073	TDZE 1073
-----------	-----------



CATEGORY	A	B	C	D
LPV DA	1323-7/8	250 (300-7/8)		NA
LNAV/VNAV DA	1323-7/8	250 (300-7/8)		NA
LNAV MDA	1380-1	307 (400-1)		NA
CIRCLING	1600-1	1680-1		NA
	527 (600-1)	607 (700-1)		

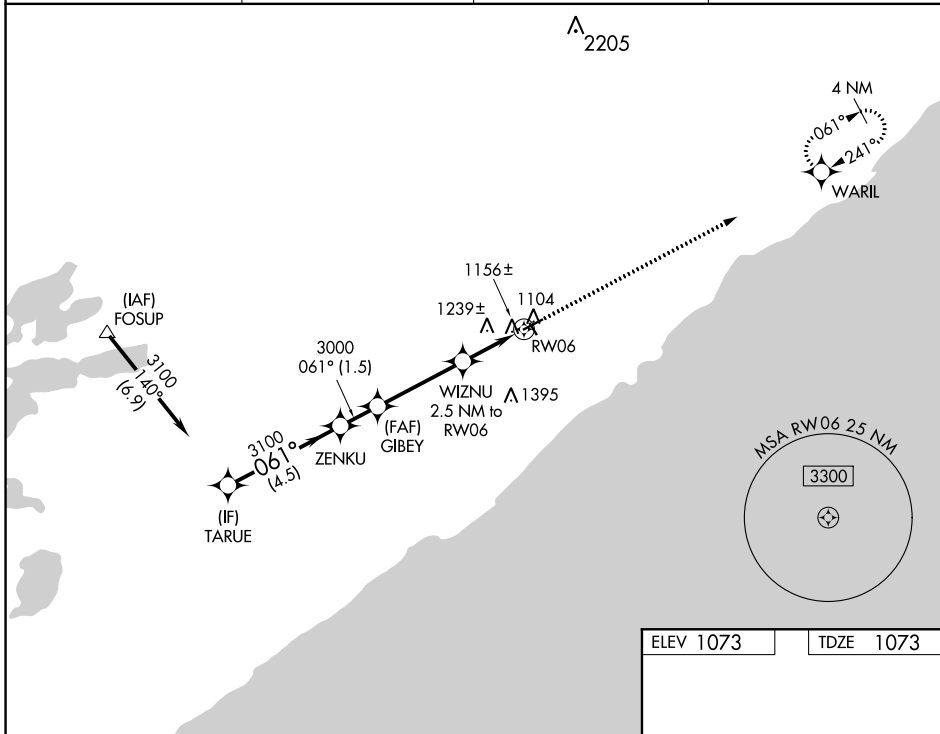
WAAS CH 53721 W06A	APP CRS 061°	Rwy Idg TDZE Apt Elev	4400 1073 1073
--	------------------------	-----------------------------	---

RNAV (GPS) RWY 6

RICHARD B HELGESON (TWM)

RNP APCH.	MISSED APPROACH: Climb to 3000 direct WARIL and hold.
<p>▼ Rwy 6 helicopter visibility reduction below 3/4 SM NA. ▲ Circling Rwy 15, 33 NA.</p>	

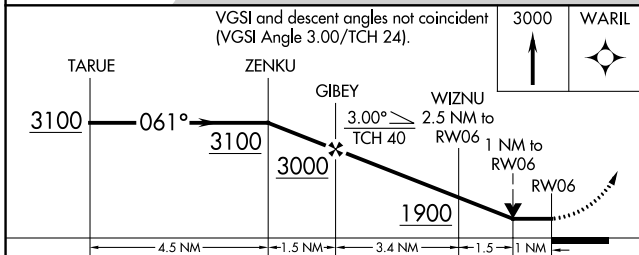
AWOS-3 119.325	DULUTH APP CON 125.45 233.7	GCO 121.725	CTAF 122.9
--------------------------	---------------------------------------	-----------------------	----------------------



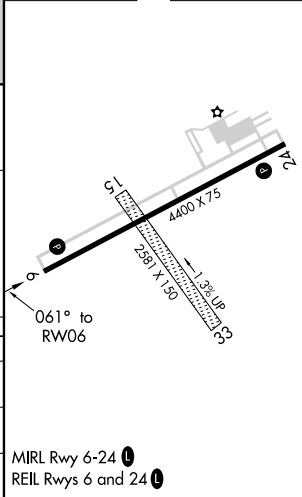
NC-1, 03 DEC 2020 to 31 DEC 2020

NC-1, 03 DEC 2020 to 31 DEC 2020

ELEV 1073	TDZE 1073
-----------	-----------



CATEGORY	A	B	C	D
LP MDA	1420-1	347 (400-1)		NA
LNAV MDA	1500-1	427 (500-1)		NA
CIRCLING	1600-1 527 (600-1)	1680-1 607 (700-1)		NA



NAME ALTERNATE MINIMUMS

BRAINERD, MN

BRAINERD LAKES
RGNL (BRD).....**ILS or LOC Rwy 23¹**
RNAV (GPS) Rwy 5
RNAV (GPS) Rwy 23
RNAV (GPS) Rwy 34

NA when local weather not available.
¹Category D, 700-2.

BROOKINGS, SD

BROOKINGS
RGNL (BKX).....**RNAV (GPS) Rwy 12**
RNAV (GPS) Rwy 30

NA when local weather not available.
Category D, 800-2 $\frac{1}{4}$.

BUFFALO, MN

BUFFALO
MUNI (CFE).....**VOR-A**
NA when local weather not available.

CAMBRIDGE, MN

CAMBRIDGE
MUNI (CBG).....**RNAV (GPS) Rwy 16**
RNAV (GPS) Rwy 34

NA when local weather not available.

CAMP RIPLEY, MN

RAY S. MILLER (KRYM)....**ILS OR LOC Rwy 31**
LOC, CAT D, 1000-3.
NA when control tower closed.

CANBY, MN

MYERS FIELD (CNB).....**RNAV (GPS) Rwy 12**
RNAV (GPS) Rwy 30

NA when local weather not available.

CARRINGTON, ND

CARRINGTON
MUNI (46D).....**RNAV (GPS) Rwy 31**
NA when local weather not available.

CAVALIER, ND

CAVALIER
MUNI (2C8).....**RNAV (GPS) Rwy 34**
NA when local weather not available.

CLOQUET, MN

CLOQUET CARLTON
COUNTY (COQ).....**RNAV (GPS) Rwy 18**
RNAV (GPS) Rwy 36

NA when local weather not available.

COOK, MN

COOK MUNI (CQM).....**RNAV (GPS) Rwy 13**
RNAV (GPS) Rwy 31

NA when local weather not available.

NAME ALTERNATE MINIMUMS

CROOKSTON, MN

CROOKSTON MUNI-KIRKWOOD
FIELD (CKN).....**RNAV (GPS) Rwy 13**
RNAV (GPS) Rwy 31
VOR/DME Rwy 13

NA when local weather not available.

CROSBY, ND

CROSBY
MUNI (D50).....**RNAV (GPS) Rwy 30**
NA when local weather not available.
Category D, 800-2 $\frac{1}{4}$.

DETROIT LAKES, MN

DETROIT LAKES-WETHING
FIELD (DTL).....**RNAV (GPS) Rwy 13**
RNAV (GPS) Rwy 31

NA when local weather not available.
Category D, 800-2 $\frac{1}{4}$.

DEVILS LAKE, ND

DEVILS LAKE
RGNL (DVL).....**RNAV (GPS) Rwy 3²**
RNAV (GPS) Rwy 13²
RNAV (GPS) Rwy 21²
RNAV (GPS) Rwy 31²
VOR Rwy 3¹
VOR Rwy 13²
VOR Rwy 31²

NA when local weather not available.
¹Categories A, B, 900-2; Category C, 900-2 $\frac{1}{2}$;
Category D, 900-2 $\frac{3}{4}$.
²Category C, 800-2 $\frac{1}{4}$, Category D, 800-2 $\frac{1}{2}$.

DICKINSON, ND

DICKINSON-THEODORE ROOSEVELT
RGNL (DIK).....**ILS or LOC Rwy 32¹**
RNAV (GPS) Rwy 14²
RNAV (GPS) Rwy 15²
RNAV (GPS) Rwy 25²
RNAV (GPS) Rwy 32²
RNAV (GPS) Rwy 33²
VOR-A²

¹ILS, Category D, 700-2.
²NA when local weather not available.

DODGE CENTER, MN

DODGE CENTER (TOB).....**RNAV (GPS) Rwy 16**
RNAV (GPS) Rwy 34
VOR-A

NA when local weather not available.

03 DEC 2020 to 31 DEC 2020

03 DEC 2020 to 31 DEC 2020

NAME ALTERNATE MINIMUMS

DULUTH, MN

DULUTH INTL (DLH).....**ILS or LOC Rwy 9¹**
ILS or LOC Rwy 27¹
RADAR-1²
RNAV (GPS) Rwy 3³
RNAV (GPS) Rwy 9²
RNAV (GPS) Rwy 21³
RNAV (GPS) Rwy 27³
VOR or TACAN Rwy 3²
VOR/DME or TACAN Rwy 21²

¹LOC, Categories D, E, 1000-3.

²Categories D, E, 1000-3.

³Category D, 1000-3.

ELY, MN

ELY MUNI (ELO).....**RNAV (GPS) Rwy 12**
RNAV (GPS) Rwy 30

NA when local weather not available.

EVELETH, MN

EVELETH-VIRGINIA
MUNI (EVM).....**RNAV (GPS) Rwy 27¹**
VOR-A²

¹NA when local weather not available.

²Category C, 800-2½; Category D, 800-2½.

FAIRMONT, MN

FAIRMONT
MUNI (FRM).....**ILS or LOC Rwy 31¹**
RNAV (GPS) Rwy 13²
RNAV (GPS) Rwy 31²

¹LOC, Category C, 900-2½; Category D, 900-2½.

²Category C, 900-2½; Category D, 900-2½.

FARGO, ND

HECTOR INTL (FAR).....**ILS or LOC Rwy 18¹**
ILS or LOC Rwy 36¹
RNAV (GPS) Rwy 9³
RNAV (GPS) Rwy 18²
RNAV (GPS) Rwy 27³
RNAV (GPS) Rwy 36²
VOR Rwy 36²

¹ILS, Category C, 700-2; Category D, 800-2½;

Category E, 800-2½. LOC, Category D,

800-2½; Category E, 800-2½.

²Category D, 800-2½, Category E, 800-2½.

³Category D, 800-2½.

FARIBAULT, MN

FARIBAULT MUNI-LIZ WALL STROHFUS
FIELD (FBL).....**RNAV (GPS) Rwy 12**
RNAV (GPS) Rwy 30

NA when local weather not available.

NAME ALTERNATE MINIMUMS

FERGUS FALLS, MN

FERGUS FALLS MUNI-EINAR MICKELSON
FIELD (FFM).....**ILS or LOC Rwy 31¹²**
RNAV (GPS) Rwy 13¹³
RNAV (GPS) Rwy 31³
RNAV (GPS) Rwy 35¹

¹NA when local weather not available.

²ILS, Category D, 700-2½.

LOC, Category D, 800-2½.

³Category D, 800-2½.

FOSSTON, MN

FOSSTON MUNI-ANDERSON
FIELD (FSE).....**NDB Rwy 34¹**
RNAV (GPS) Rwy 16
RNAV (GPS) Rwy 34

NA when local weather not available.

¹Category C, 800-2½.

GLENCOE, MN

GLENCOE
MUNI (GYL).....**RNAV (GPS) Rwy 31**

NA when local weather not available.

GLENWOOD, MN

GLENWOOD
MUNI (GHW).....**RNAV (GPS) Rwy 15**
RNAV (GPS) Rwy 33

NA when local weather not available.

GRAND FORKS, ND

GRAND FORKS
INTL (GFK).....**ILS or LOC Rwy 35L¹²**
LOC BC Rwy 17R¹
RNAV (GPS) Rwy 9L
RNAV (GPS) Rwy 17R
RNAV (GPS) Rwy 27R
VOR Rwy 17R

NA when local weather not available.

¹NA when control tower closed.

²ILS, Category E, 700-2½;

LOC, Category E, 800-2½.

GRAND MARAIS, MN

GRAND MARAIS/ COOK
COUNTY (CKC).....**RNAV (GPS) Rwy 10**
RNAV (GPS) Rwy 28¹

Category D, 900-2½.

¹NA when local weather not available.

GRAND RAPIDS, MN

GRAND RAPIDS/ITASCA COUNTY-GORDON
NEWSTROM FIELD (GPZ).....**ILS or LOC Rwy 34**
RNAV (GPS) Rwy 16
VOR Rwy 34

NA when local weather not available.

03 DEC 2020 to 31 DEC 2020

03 DEC 2020 to 31 DEC 2020

NAME ALTERNATE MINIMUMS

GRANITE FALLS, MN

GRANITE FALLS MUNI/LENZEN-ROE-FAGEN
MEMORIAL FIELD (GDB).....**RNAV (GPS) Rwy 33**
VOR/DME Rwy 33

NA when local weather not available.

GWINNER, ND

GWINNER-ROGER MELROE
FIELD (GWR).....**RNAV (GPS) Rwy 16**
RNAV (GPS) Rwy 34

NA when local weather not available.
Category D, 800-2½.

HALLOCK, MN

HALLOCK MUNI (HCO).....**RNAV (GPS) Rwy 13**
RNAV (GPS) Rwy 31

NA when local weather not available.

HAZEN, ND

MERCER COUNTY
RGNL (HZE).....**RNAV (GPS) Rwy 14**
RNAV (GPS) Rwy 32

NA when local weather not available.

HETTINGER, ND

HETTINGER
MUNI (HEI).....**RNAV (GPS) Rwy 12**
RNAV (GPS) Rwy 30

Category D, 800-2¼.

HIBBING, MN

RANGE
RGNL (HIB)..... **ILS OR LOC/DME Rwy 13**
ILS, Categories A, B, C, D, 800-2.

HURON, SD

HURON RGNL (HON).....**ILS or LOC Rwy 12¹**
LOC/DME BC Rwy 30²
RNAV (GPS) Rwy 12²
RNAV (GPS) Rwy 30²
VOR Rwy 12²

NA when local weather not available.
¹ILS, Category D, 700-2¼. LOC, Category D, 800-2¼.
²Category D, 800-2¼.

HUTCHINSON, MN

HUTCHINSON MUNI-
BUTLER FIELD (HCD).....**RNAV (GPS) Rwy 15**
NA when local weather not available.

NAME ALTERNATE MINIMUMS

INTERNATIONAL FALLS, MN

FALLS INTL-EINARSON
FIELD (INL).....**COPTER ILS or LOC Rwy 31¹**
ILS or LOC/DME Rwy 13,700-2²
RNAV (GPS) Rwy 13²
RNAV (GPS) Rwy 31²
VOR Rwy 13²³

¹LOC, NA; ILS, NA when local weather not available.

²NA when local weather not available.

³Category D, 800-2¼.

JAMESTOWN, ND

JAMESTOWN
RGNL (JMS).....**RNAV (GPS) Rwy 4**
RNAV (GPS) Rwy 13
RNAV (GPS) Rwy 22
RNAV (GPS) Rwy 31
VOR Rwy 13
VOR Rwy 31

Category D, 800 2½.

LANGDON, ND

ROBERTSON
FIELD (D55).....**RNAV (GPS) Rwy 14**
RNAV (GPS) Rwy 32

NA when local weather not available.

LONG PRAIRIE, MN

TODD
FIELD (14Y).....**RNAV (GPS) Rwy 34**
NA when local weather not available.

LONGVILLE, MN

LONGVILLE
MUNI (XVG).....**RNAV (GPS) Rwy 13**
RNAV (GPS) Rwy 31

NA when local weather not available.

LITCHFIELD, MN

LITCHFIELD
MUNI (LJF).....**RNAV (GPS) Rwy 13**
RNAV (GPS) Rwy 31
VOR-A

Category D, 800-2¼.

NA when local weather not available.

LITTLE FALLS, MN

LITTLE FALLS/MORRISON COUNTY-
LINDBERGH
FIELD (LXL).....**RNAV (GPS) Rwy 31**
NA when local weather not available.

LINTON, ND

LINTON MUNI (7L2).....**RNAV (GPS) Rwy 9**
RNAV (GPS) Rwy 27
NA when local weather not available.

03 DEC 2020 to 31 DEC 2020

03 DEC 2020 to 31 DEC 2020

NAME ALTERNATE MINIMUMS

MADISON, MN

LAC QUI PARLE
COUNTY (DXX).....RNAV (GPS) Rwy 14
RNAV (GPS) Rwy 32
NA when local weather not available

MADISON, SD

MADISON MUNI (MDS).....RNAV (GPS) Rwy 15
RNAV (GPS) Rwy 33
NA when local weather not available

MAHNOMEN, MN

MAHNOMEN
COUNTY (3N8).....RNAV (GPS) Rwy 17
RNAV (GPS) Rwy 35
NA when local weather not available

MANDAN, ND

MANDAN MUNI (Y19).....RNAV (GPS) Rwy 13
RNAV (GPS) Rwy 31
VOR-A
NA when local weather not available

MANKATO, MN

MANKATO RGNL
(MKT).....RNAV (GPS) Rwy 15
RNAV (GPS) Rwy 22
RNAV (GPS) Rwy 33
VOR Rwy 15
NA when local weather not available.

MAPLE LAKE, MN

MAPLE LAKE MUNI-BILL MAVENCAMP
SR FIELD (MGG).....VOR-A
NA when local weather not available.

MARSHALL, MN

SOUTHWEST MINNESOTA RGNL MARSHALL/
RYAN FIELD (MML).....RNAV (GPS) Rwy 12
RNAV (GPS) Rwy 30
NA when local weather not available.

MINNEAPOLIS, MN

AIRLAKE (LVN).....RNAV (GPS) Rwy 12¹
RNAV (GPS) Rwy 30²
VOR Rwy 12¹

¹Category D, 800-2½.

²NA when local weather not available.

CRYSTAL (MIC).....RNAV (GPS) Rwy 14L
NA when local weather not available.

NAME ALTERNATE MINIMUMS

MINNEAPOLIS, MN (CON'T)

FLYING CLOUD
(FCM).....COPTER ILS or LOC Rwy 10R¹
ILS or LOC Rwy 10R¹²
RNAV (GPS) Rwy 10L
RNAV (GPS) Rwy 10R
RNAV (GPS) Rwy 28L
RNAV (GPS) Rwy 28R
RNAV (GPS) Rwy 36
VOR Rwy 10R
VOR/DME Rwy 36

NA when local weather not available.

¹NA when control tower closed.

²Category D, 700-2.

MINNEAPOLIS-ST. PAUL INTL/WOLD-
CHAMBERLAIN (MSP).....ILS or LOC Rwy 12L¹
ILS or LOC Rwy 12R¹
ILS or LOC Rwy 30L²
ILS or LOC Rwy 30R²
ILS Z or LOC Rwy 35²
LOC Rwy 4⁴
LOC Rwy 17³
LOC Rwy 22⁴
LOC Rwy 22⁴
RNAV (GPS) Rwy 4⁴
RNAV (GPS) Rwy 22⁴
RNAV (GPS) Z Rwy 12L⁴
RNAV (GPS) Z Rwy 12R⁴
RNAV (GPS) Z Rwy 30L⁴
RNAV (GPS) Z Rwy 30R⁴
RNAV (GPS) Z Rwy 35⁴

¹ILS, Category C, 700-2; Category D, 900-2¾;
Category E, 1000-3; LOC, Category D, 900-2¾;
Category E, 1000-3.

²ILS, Category C, 700-2; Category D, 900-2¾;
Category E, 1000-3; LOC, Category D, 900-2¾;
Category E, 1000-3.

³Category D, 900-2¾.

⁴Category D, 900-2¾; Category E, 1000-3.

MINOT, ND

MINOT INTL (MOT).....ILS or LOC Rwy 31¹²
LOC BC Rwy 13¹
RNAV (GPS) Rwy 8
RNAV (GPS) Rwy 13
RNAV (GPS) Rwy 26
RNAV (GPS) Rwy 31
VOR Rwy 8³
VOR Rwy 13
VOR Rwy 26⁴
VOR Rwy 31

NA when local weather not available.

¹NA when tower closed.

²Category E, 1100-3.

³Categories A, B, 1100-2; Categories C, D, 1100-3.

⁴Categories A, B, 900-2; Category C, 900-2¾;
Category D, 900-2¾.

03 DEC 2020 to 31 DEC 2020

03 DEC 2020 to 31 DEC 2020

NAME ALTERNATE MINIMUMS

MITCHELL, SD

MITCHELL MUNI (MHE).....RNAV (GPS) Rwy 13
RNAV (GPS) Rwy 18
RNAV (GPS) Rwy 31
RNAV (GPS) Rwy 36
VOR Rwy 13

NA when local weather not available.

MOBRIDGE, SD

MOBRIDGE MUNI (MBG).....RNAV (GPS) Rwy 12
RNAV (GPS) Rwy 30

NA when local weather not available
Category D, 900-2¼.

MONTEVIDEO, MN

MONTEVIDEO-CHIPPEWA
COUNTY (MVE).....RNAV (GPS) Rwy 14
RNAV (GPS) Rwy 32

NA when local weather not available

MOORHEAD, MN

MOORHEAD
MUNI (JKJ).....RNAV (GPS) Rwy 30¹
VOR-A²

¹NA when local weather not available.

²Categories A, B, 900-2;

MORA, MN

MORA MUNI (JMR).....RNAV (GPS) Rwy 35
NA when local weather not available.
Category D, 800-2¼.

MORRIS, MN

MORRIS MUNI-CHARLIE SCHMIDT
FLD (MOX).....RNAV (GPS) Rwy 14
RNAV (GPS) Rwy 32

NA when local weather not available.

ORR, MN

ORR RGNL (ORB).....RNAV (GPS) Rwy 13
NA when local weather not available.

ORTONVILLE, MN

ORTONVILLE MUNI-MARTINSON
FIELD (VVV).....RNAV (GPS) Rwy 34
NA when local weather not available.

OWATONNA, MN

OWATONNA DEGNER
RGNL (OWA).....RNAV (GPS) Rwy 12
RNAV (GPS) Rwy 30¹

NA when local weather not available.

¹Category D, 800-2¼.

NAME ALTERNATE MINIMUMS

PARK RAPIDS, MN

PARK RAPIDS MUNI-KONSHOK
FIELD (PKD).....RNAV (GPS) Rwy 13
RNAV (GPS) Rwy 31

NA when local weather not available.
Category D, 1100-3.

PAYNESVILLE, MN

PAYNESVILLE
MUNI (PEX).....RNAV (GPS) Rwy 11
RNAV (GPS) Rwy 29

NA when local weather not available.

PHILIP, SD

PHILIP (PHP).....RNAV (GPS) Rwy 12
RNAV (GPS) Rwy 30
VOR-A

NA when local weather not available.

PIERRE, SD

PIERRE RGNL (PIR).....ILS or LOC Rwy 31¹
RNAV (GPS) Rwy 7²
RNAV (GPS) Rwy 13²
RNAV (GPS) Rwy 31²
VOR/DME or TACAN Rwy 7²
VOR or TACAN Rwy 25²

NA when local weather not available.

¹LOC, Category D, 800-2¼.

²Category D, 800-2¼.

PINE RIDGE, SD

PINE RIDGE (IEN).....RNAV (GPS) Rwy 12¹
RNAV (GPS) Rwy 30²

¹Category C, 900-2½.

²Categories A, B, 900-2.

PINE RIVER, MN

PINE RIVER
RGNL (PWC).....NDB Rwy 34
NA when local weather not available.
Categories A, B, 900-2; Category C, 900-2¼.

PIPESTONE, MN

PIPESTONE
MUNI (PQN).....RNAV (GPS) Rwy 18
RNAV (GPS) Rwy 36

NA when local weather not available.

PRESTON, MN

FILLMORE
COUNTY (FKA).....RNAV (GPS) Rwy 11
RNAV (GPS) Rwy 29

NA when local weather not available.

03 DEC 2020 to 31 DEC 2020

03 DEC 2020 to 31 DEC 2020

NAME ALTERNATE MINIMUMS

RAPID CITY, SD

RAPID CITY
RGNL (RAP).....ILS or LOC Rwy 32¹
RNAV (GPS) Rwy 5²
RNAV (GPS) Rwy 14^{2,3}
RNAV (GPS) Rwy 23²
RNAV (GPS) Rwy 32⁴
VOR or TACAN Rwy 14^{2,4}
VOR or TACAN Rwy 32^{2,4}

¹ILS, Categories B, C, 700-2; Category D, 800-2½; Category E, 800-2¼. LOC, Category D, 800-2¼; Category E, 800-2¼.

²NA when local weather not available.

³Category D, 800-2½; Category E, 800-2¼.

⁴Category D, 800-2¼; Category E, 800-2¼.

RED WING, MN

RED WING
RGNL (RGK).....RNAV (GPS) Rwy 9¹
RNAV (GPS) Rwy 27²

NA when local weather not available.

¹Category C, 800-2¼; Category D, 800-2½.

²Category C, 800-2¼.

REDWOOD FALLS, MN

REDWOOD FALLS
MUNI (RWF).....RNAV (GPS) Rwy 30
VOR-A

Category D, 800-2¼.

NA when local weather not available.

ROCHESTER, MN

ROCHESTER
INTL (RST).....ILS or LOC Rwy 13
ILS Z or LOC Z Rwy 31
COPTER ILS Y or LOC Y Rwy 31

NA when control tower closed.

ROLLA, ND

ROLLA MUNI (06D).....RNAV (GPS) Rwy 32
NA when local weather not available.
Category D, 900-2¼.

ROSEAU, MN

ROSEAU MUNI/RUDY BILLBERG
FIELD (ROX).....RNAV (GPS) Rwy 16
RNAV (GPS) Rwy 34
NA when local weather not available.

RUGBY, ND

RUGBY MUNI (RUG).....RNAV (GPS) Rwy 30
NA when local weather not available.

RUSH CITY, MN

RUSH CITY
RGNL (ROS).....RNAV (GPS) Rwy 34
NA when local weather not available.

NAME ALTERNATE MINIMUMS

ST. CLOUD, MN

ST. CLOUD
RGNL (STC).....ILS or LOC/DME Rwy 13^{1,2,3}
RNAV (GPS) Rwy 5¹
RNAV (GPS) Rwy 13¹
RNAV (GPS) Rwy 23¹
RNAV (GPS) Rwy 31¹
VOR Rwy 31³

¹NA when local weather not available.

²ILS, Categories A, B, C, D, 700-2.

³NA when control tower closed.

ST. JAMES, MN

ST. JAMES
MUNI (JYG).....RNAV (GPS) Rwy 15
RNAV (GPS) Rwy 33

NA when local weather not available.

ST. PAUL, MN

LAKE ELMO (21D).....NDB Rwy 4¹
RNAV (GPS) Rwy 32

NA when local weather not available.

¹Categories A, B, 900-2; Category C 900-2½.

ST. PAUL DOWNTOWN HOLMAN

FIELD (STP).....ILS or LOC Rwy 14^{1,2}
ILS or LOC Rwy 32^{1,2}
NDB Rwy 31³
RNAV (GPS) Rwy 14⁴
RNAV (GPS) Rwy 32⁴

¹NA when control tower closed.

²LOC, Categories A, B, 900-2; Category C, 900-2½; Category D, 900-2¼.

³Categories A, B, 900-2; Category C, 900-2¼; Category D, 900-3.

⁴Categories A, B, 900-2; Category C, 900-2½; Category D, 900-2¼.

SAUK CENTRE, MN

SAUK CENTRE
MUNI (D39).....RNAV (GPS) Rwy 14
RNAV (GPS) Rwy 32

NA when local weather not available.

SIoux FALLS, SD

JOE FOSS
FIELD (FSD).....ILS or LOC Rwy 3^{1,2}
ILS or LOC Rwy 21^{1,2}
RADAR-1³
RNAV (GPS) Rwy 3⁴
RNAV (GPS) Rwy 15⁵
RNAV (GPS) Rwy 21⁴
VOR or TACAN Rwy 15⁶
VOR/DME or TACAN Rwy 33⁵

¹NA when control tower closed.

²LOC, Category D, 800-2½.

³Category E, 800-2¼.

⁴Category D, 800-2½.

⁵Category C, 800-2¼; Category D, 800-2½.

⁶Category D, 800-2½; Category E, 900-3.

03 DEC 2020 to 31 DEC 2020

03 DEC 2020 to 31 DEC 2020

NAME ALTERNATE MINIMUMS

SLAYTON, MN

SLAYTON MUNI (DVP).....RNAV (GPS) Rwy 17
RNAV (GPS) Rwy 35

NA when local weather not available.

SOUTH ST. PAUL, MN

SOUTH ST. PAUL MUNI-RICHARD E
FLEMING FIELD (SGS)RNAV (GPS) Rwy 34
Category D, 800-2½.

SPEARFISH, SD

BLACK HILLS-
CLYDE ICE FIELD (SPF).....RNAV (GPS) Rwy 13¹
RNAV (GPS) Rwy 31²

¹Categories A, B, 1000-4, Category C, 1700-4.
²Categories A, B, 1000-2, Category C, 1700-3.

STAPLES, MN

STAPLES MUNI (SAZ).....RNAV (GPS) Rwy 14
RNAV (GPS) Rwy 32

NA when local weather not available.

THIEF RIVER FALLS, MN

THIEF RIVER
FALLS RGNL (TVF).....ILS or LOC Rwy 31¹
RNAV (GPS) Rwy 4²
RNAV (GPS) Rwy 13²³
RNAV (GPS) Rwy 22²
RNAV (GPS) Rwy 31²³
VOR Y Rwy 13³
VOR Rwy 31³

¹LOC, Category D, 900-2¾.
²NA when local weather not available.
³Category D, 900-2¾.

TIOGA, ND

TIOGA
MUNI (D60).....RNAV (GPS) Rwy 12
RNAV (GPS) Rwy 30¹

Category D, 800-2¼.
¹NA when local weather not available.

TWO HARBORS, MN

RICHARD B.
HELGESON (TWM).....RNAV (GPS) Rwy 6
RNAV (GPS) Rwy 24

NA when local weather not available.

VALLEY CITY, ND

BARNES COUNTY
MUNI (BAC).....RNAV (GPS) Rwy 13
RNAV (GPS) Rwy 31

NA when local weather not available.

WADENA, MN

WADENA MUNI (ADC).....RNAV (GPS) Rwy 16
RNAV (GPS) Rwy 34

NA when local weather not available.

NAME ALTERNATE MINIMUMS

WAHPETON, ND

HARRY
STERN (BWP).....RNAV (GPS) Rwy 33
NA when local weather not available.

WALKER, MN

WALKER MUNI (Y49).....RNAV (GPS) Rwy 15
RNAV (GPS) Rwy 33
NA when local weather not available.
Category C, 800-2¼.

WARROAD, MN

WARROAD INTL
MEMORIAL (RRT).....RNAV (GPS) Rwy 13
RNAV (GPS) Rwy 31

NA when local weather not available.
Category C, 900-2¾; Category D, 900-3.

WASECA, MN

WASECA MUNI (ACQ).....RNAV (GPS) Rwy 15
RNAV (GPS) Rwy 33

NA when local weather not available.

WATERTOWN, SD

WATERTOWN
RGNL (ATY).....ILS or LOC Rwy 35¹²
LOC BC Rwy 17³
RNAV (GPS) Rwy 12³
RNAV (GPS) Rwy 17¹³
RNAV (GPS) Rwy 30¹³
RNAV (GPS) Rwy 35³
VOR or TACAN Rwy 17¹³

¹NA when local weather not available.
²LOC, Category C, 800-2¼; Category D, 800-2½.
³Category C, 800-2¼; Category D, 800-2½.

WHEATON, MN

WHEATON MUNI (ETH).....RNAV (GPS) Rwy 16
RNAV (GPS) Rwy 34

NA when local weather not available.

WILLISTON, ND

WILLISTON BASIN
INTL (XWA).....RNAV (GPS) Rwy 14
RNAV (GPS) Rwy 32
VOR Rwy 14
VOR Rwy 32

NA when local weather not available.

WILLMAR, MN

WILLMAR MUNI-JOHN
L RICE FIELD (BDH).....RNAV (GPS) Rwy 13
RNAV (GPS) Rwy 31
VOR Rwy 31¹

NA when local weather not available.
¹Category D, 800-2¼.

03 DEC 2020 to 31 DEC 2020

03 DEC 2020 to 31 DEC 2020

20338

NAME ALTERNATE MINIMUMS

NAME ALTERNATE MINIMUMS

WINDOM, MN

WINDOM MUNI (MWM).....RNAV (GPS) Rwy 17
RNAV (GPS) Rwy 35
NA when local weather not available.

WINNER, SD

WINNER RGNL (ICR).....RNAV (GPS) Rwy 13
RNAV (GPS) Rwy 31
NA when local weather not available.

WINONA, MN

WINONA MUNI-MAX CONRAD
FIELD (ONA).....ILS Y or LOC Y Rwy 30¹²
ILS Z or LOC Z Rwy 30¹³
RNAV (GPS) Rwy 12⁴
RNAV (GPS) Rwy 30¹

¹NA when local weather not available.
²ILS, LOC, Categories A, B, 1000-2; Category C, 1200-3; Category D, 1400-3.
³LOC, Category A, B, 1000-2; Category C, 1200-3; Category D, 1400-3.
⁴Categories A, B, 1000-2; Category C, 1200-3; Category D, 1400-3.

WORTHINGTON, MN

WORTHINGTON
MUNI (OTG).....RNAV (GPS) Rwy 11²
RNAV (GPS) Rwy 18²
RNAV (GPS) Rwy 29²
RNAV (GPS) Rwy 36²
VOR Rwy 11¹
VOR Rwy 18²

¹Category D, 800-2½.
²NA when local weather not available.

YANKTON, SD

CHAN GURNEY
MUNI (YKN).....RNAV (GPS) Rwy 13
RNAV (GPS) Rwy 31
VOR Rwy 13
NA when local weather not available.

03 DEC 2020 to 31 DEC 2020

03 DEC 2020 to 31 DEC 2020

20338

M9