

LOC I-TWFF 108.3	APP CRS 258°	Rwy Idg 8704 TDZE 4153 Apt Elev 4153
----------------------------	------------------------	--

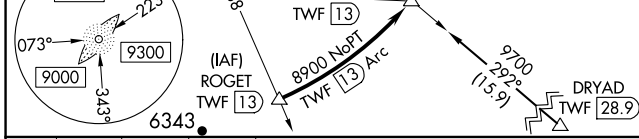
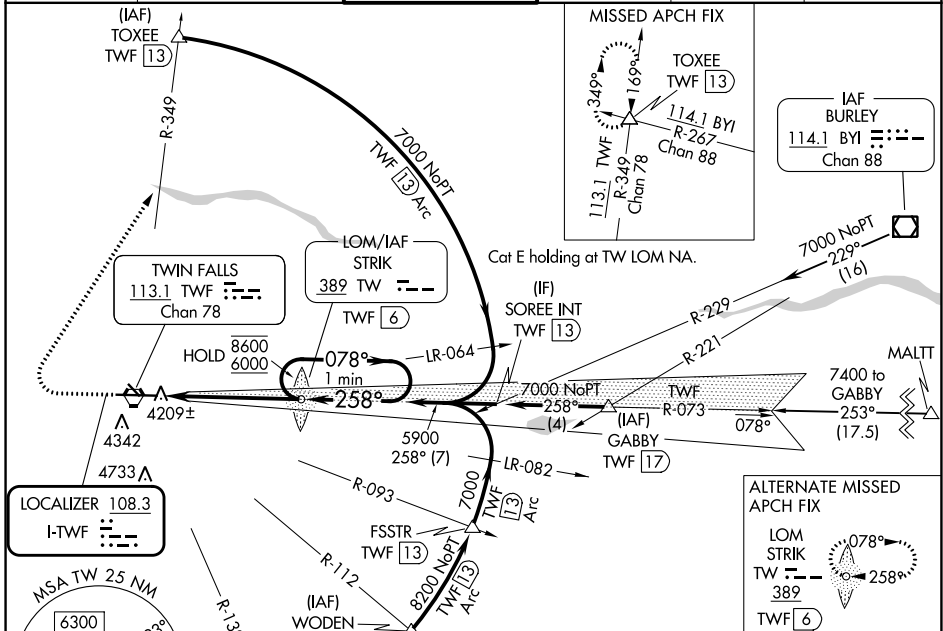
ILS or LOC RWY 26
JOSLIN FLD/MAGIC VALLEY RGNL (TWF')

ADF or DME required.

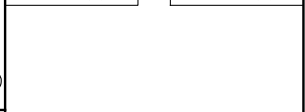
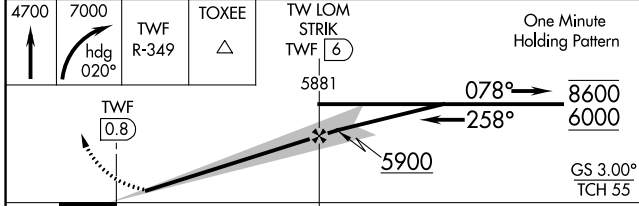
⚠ Circling Rwy 30 NA at night. When local altimeter setting not received, use Jerome altimeter setting: increase S-ILS 26 DA to 4402 feet; increase all MDAs 60 feet and S-LOC 26 visibility Cat C/D/E 1/8 SM. For inop ALS when using local or Jerome altimeter setting, increase S-ILS 26 Cat E visibility to 3/4 SM and S-LOC 26 Cat E to 1 SM.

MALSR MISSED APPROACH: Climb to 4700 then climbing right turn to 7000 on heading 020° and on TWF VORTAC R-349 to TOXEE INT/TWF 13 DME and hold.

ASOS 135.025	TWIN FALLS APP CON * 126.7 353.75	TWIN FALLS TOWER * 118.2 (CTAF) 0 317.5	GND CON 121.7	CLNC DEL 123.65	UNICOM 122.95
------------------------	---	---	-------------------------	---------------------------	-------------------------



ELEV 4153	TDZE 4153
-----------	-----------



CATEGORY	A	B	C	D	E
S-ILS 26		4353-1/2	200 (200-1/2)		
S-LOC 26		4480-1/2	327 (400-1/2)		
CIRCLING	4700-1 547 (600-1)	4780-1 627 (700-1)	5100-2 3/4 947 (1000-2 3/4)	5100-3	947 (1000-3)

REIL Rwy 8	HIRL Rwy 8-26				
FAF to MAP 5.2 NM					
Knots	60	90	120	150	180
Min:Sec	5:12	3:28	2:36	2:05	1:44


NW-1, 22 FEB 2024 to 21 MAR 2024

NW-1, 22 FEB 2024 to 21 MAR 2024

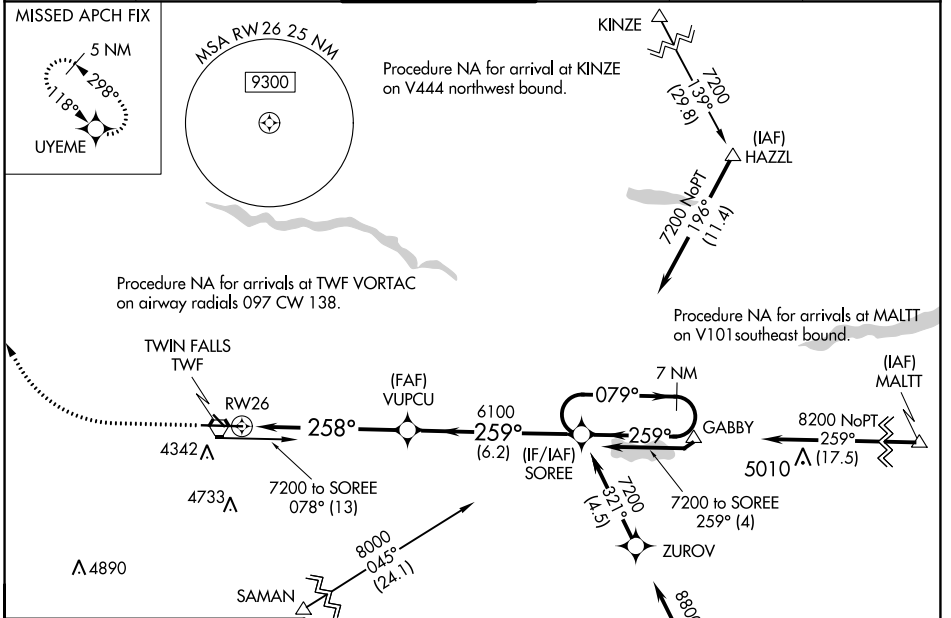
WAAS CH 56311 W26A	APP CRS 258°	Rwy Idg 8704 TDZE 4154 Apt Elev 4154
--	------------------------	---

RNAV (GPS) RWY 26

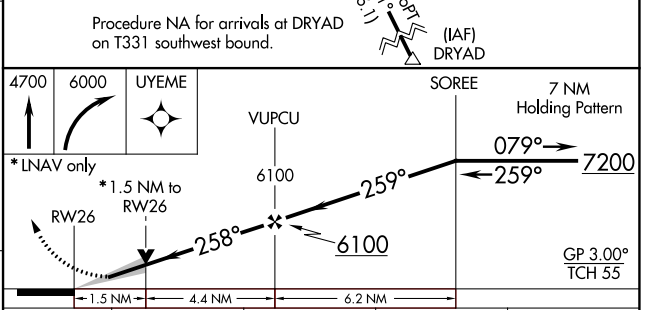
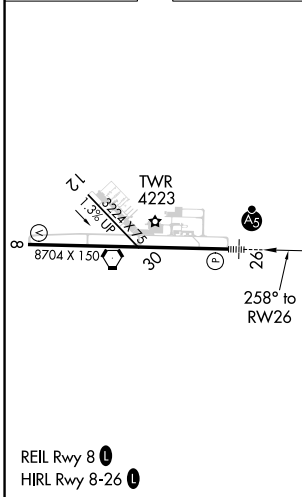
JOSLIN FLD/MAGIC VALLEY RGNL (TWF)

<p>⚠ Circling to Rwy 30 NA at night. For uncompensated Baro-VNAV systems, LNAV/VNAV NA below -16°C (4°F) or above 49°C (121°F). DME/DME RNP-0.3 NA.</p>	<p>MALSR</p>  <p>MISSED APPROACH: Climb to 4700 then climbing right turn to 6000 direct UYEME and hold.</p>
--	--

ASOS 135.025	TWIN FALLS APP CON * 126.7 353.75	TWIN FALLS TOWER * 118.2 (CTAF) 0 317.5	GND CON 121.7	CLNC DEL 123.65	UNICOM 122.95
------------------------	---	---	-------------------------	---------------------------	-------------------------



ELEV 4154	TDZE 4154
-----------	-----------



CATEGORY	A	B	C	D
LPV DA		4354-1/2	200 (200-1/2)	
LNAV/VNAV DA		4533-3/4	379 (400-3/4)	
LNAV MDA	4680-1/2	526 (600-1/2)	4680-1	526 (600-1)
C CIRCLING	4700-1 546 (600-1)	4780-1 626 (700-1)	5160-3	1006 (1100-3)

NW-1, 22 FEB 2024 to 21 MAR 2024

NW-1, 22 FEB 2024 to 21 MAR 2024

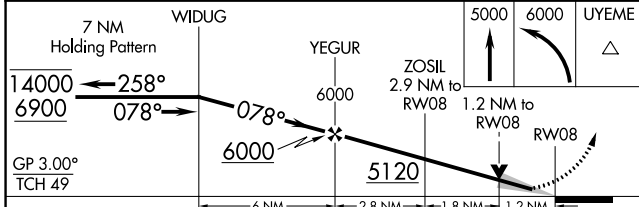
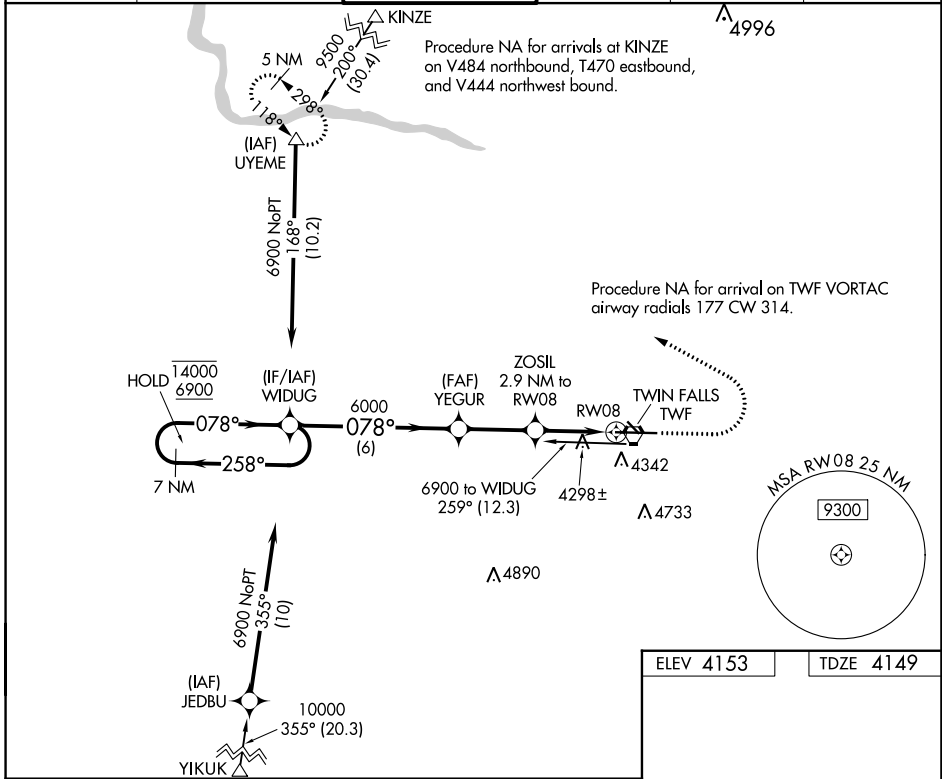
WAAS CH 40211 W08A	APP CRS 078°	Rwy Idg TDZE Apt Elev	8704 4149 4153
--	------------------------	-----------------------------	---

RNAV (GPS) RWY 8

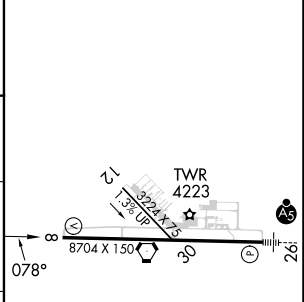
JOSLIN FLD/MAGIC VALLEY RGNL (TWF)

RNP APCH - GPS.			MISSED APPROACH: Climb to 5000 then climbing left turn to 6000 direct UYEME and hold.		
<p>▽ Circling Rwy 30 NA at night. For uncompensated Baro-VNAV systems, LNAV/VNAV NA below -16°C or above 54°C.</p> <p>▲</p>					

ASOS 135.025	TWIN FALLS APP CON* 126.7 353.75	TWIN FALLS TOWER* 118.2 (CTAF) 0 317.5	GND CON 121.7	CLNC DEL 123.65	UNICOM 122.95
------------------------	--	--	-------------------------	---------------------------	-------------------------



ELEV 4153	TDZE 4149
-----------	-----------



CATEGORY	A	B	C	D
LPV DA		4349-3/4	200 (200-3/4)	
LNAV/VNAV DA		4583-1 1/4	434 (500-1 1/4)	
LNAV MDA	4560-1	411 (500-1)	4560-1 1/8	411 (500-1 1/8)
CIRCLING	4700-1 547 (600-1)	4780-1 627 (700-1)	5100-2 3/4 947 (1000-2 3/4)	5100-3 947 (1000-3)

REIL Rwy 8 0
HIRL Rwy 8-26 0

NW-1, 22 FEB 2024 to 21 MAR 2024

NW-1, 22 FEB 2024 to 21 MAR 2024

VORTAC TWF 113.1 Chan 78	APP CRS 248°	Rwy Idg TDZE 4154 Apt Elev 4154	8704
--	------------------------	---	-------------

VOR RWY 26

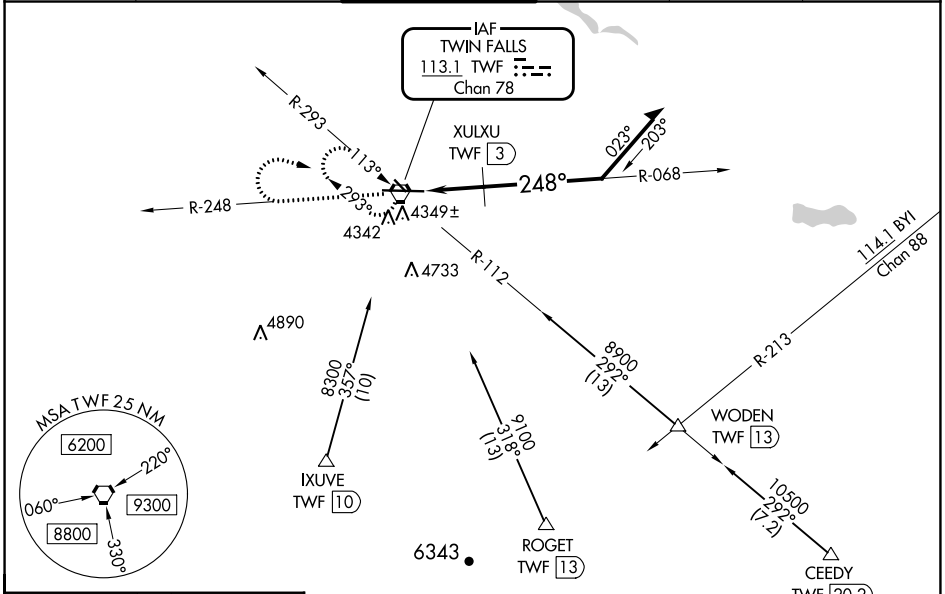
JOSLIN FLD/MAGIC VALLEY RGNL (TWF)

⚠ Night landing: Rwy 30 NA. VDP NA with Jerome altimeter setting. When local altimeter setting not received, use Jerome altimeter setting and increase all MDA 60 feet; increase S-26 Cat A visibility 1/4 mile, Cat C/D 1/2 mile, Circling Cat C 1/4 mile, and XULXU FIX S-26 Cat C/D 1/2 mile. For inop MALSR, increase S-26 Cat C/D visibility to 2 1/2 miles; when using Jerome altimeter setting increase XULXU FIX S-26 Cat C/D visibility to 1 3/8 mile.



MISSED APPROACH: Climb to 6000 on TWF VORTAC R-248 then right turn direct TWF VORTAC and hold.

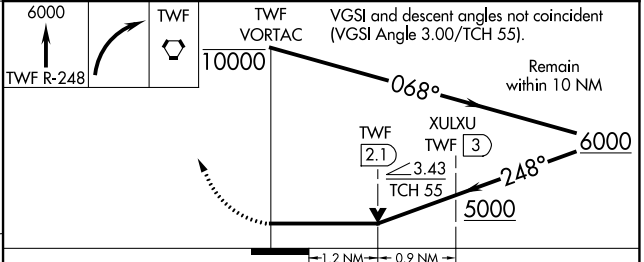
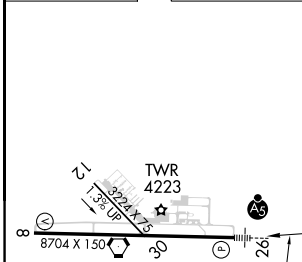
ASOS 135.025	TWIN FALLS APP CON* 126.7 353.75	TWIN FALLS TOWER* 118.2 (CTAF) 317.5	GND CON 121.7	CLNC DEL 123.65	UNICOM 122.95
------------------------	--	--	-------------------------	---------------------------	-------------------------



NW-1, 22 FEB 2024 to 21 MAR 2024

NW-1, 22 FEB 2024 to 21 MAR 2024

ELEV 4154	TDZE 4154
------------------	------------------



CATEGORY	A	B	C	D
S-26	5000-1/2 846 (900-1/2)	5000-3/4 846 (900-3/4)	5000-17/8	846 (900-17/8)
C CIRCLING	5000-1 1/4	846 (900-1 1/4)	5100-2 3/4 946 (1000-2 3/4)	5100-3 946 (1000-3)
XULXU FIX MINIMUMS				
S-26	4600-1/2	446 (500-1/2)	4600-7/8	446 (500-7/8)
C CIRCLING	4700-1 546 (600-1)	4780-1 626 (700-1)	5100-2 3/4 946 (1000-2 3/4)	5100-3 946 (1000-3)

REIL Rwy 8 **1**
HIRL Rwy 8-26 **1**

VORTAC TWF 113.1 Chan 78	APP CRS 077°	Rwy Idg TDZE Apt Elev	8704 4149 4154
--	------------------------	-----------------------------	---

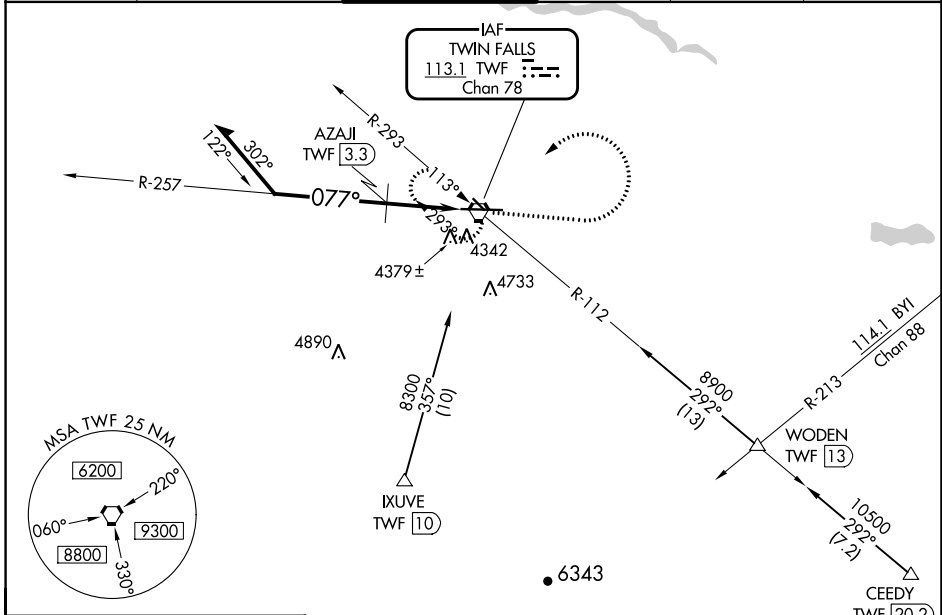
VOR RWY 8

JOSLIN FLD/MAGIC VALLEY RGNL (TWF')

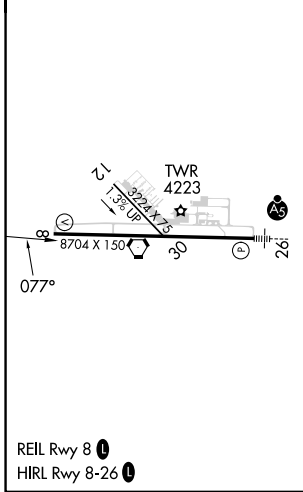
⚠ Circling to Rwy 30 NA at night. When local altimeter setting not received, use Jerome altimeter setting and increase all MDA 60 feet and S-8 Cats C and D visibility ½ mile, S-8 Cat B and Circling Cat B and C visibility ¼ mile. Increase AZAJI FIX minimums S-8 Cat C and D and Circling Cat C visibility ¼ mile. VDP NA when using Jerome altimeter setting.

MISSED APPROACH: Climb to 6000 then left turn direct TWF VORTAC and hold.

ASOS 135.025	TWIN FALLS APP CON* 126.7 353.75	TWIN FALLS TOWER* 118.2 (CTAF) 0 317.5	GND CON 121.7	CLNC DEL 123.65	UNICOM 122.95
------------------------	--	--	-------------------------	---------------------------	-------------------------



ELEV 4154	TDZE 4149
-----------	-----------



VGSI and descent angle not coincident (VGSI Angle 3.00/TCH 49).

Remain within 10 NM

6000 → 257° → AZAJI TWF [3.3] → 077° → *5060

TWF VORTAC 6000 → 3.02° TCH 49 → *5120 when using Jerome altimeter setting.

CATEGORY	A	B	C	D
S-8	5060-1¼	911 (1000-1¼)	5060-2½	911 (1000-2½)
C CIRCLING	5060-1¼	906 (1000-1¼)	5100-2¾ 946 (1000-2¾)	5100-3 946 (1000-3)
AZAJI FIX MINIMUMS				
S-8	4640-1	491 (500-1)	4640-1¾	491 (500-1¾)
C CIRCLING	4700-1 546 (600-1)	4780-1 626 (700-1)	5100-2¾ 946 (1000-2¾)	5100-3 946 (1000-3)

NW-1, 22 FEB 2024 to 21 MAR 2024

NW-1, 22 FEB 2024 to 21 MAR 2024

VORTAC TWF 113.1 Chan 78	APP CRS 078°	Rwy Idg TDZE Apt Elev	8704 4149 4154
--	------------------------	-----------------------------	---

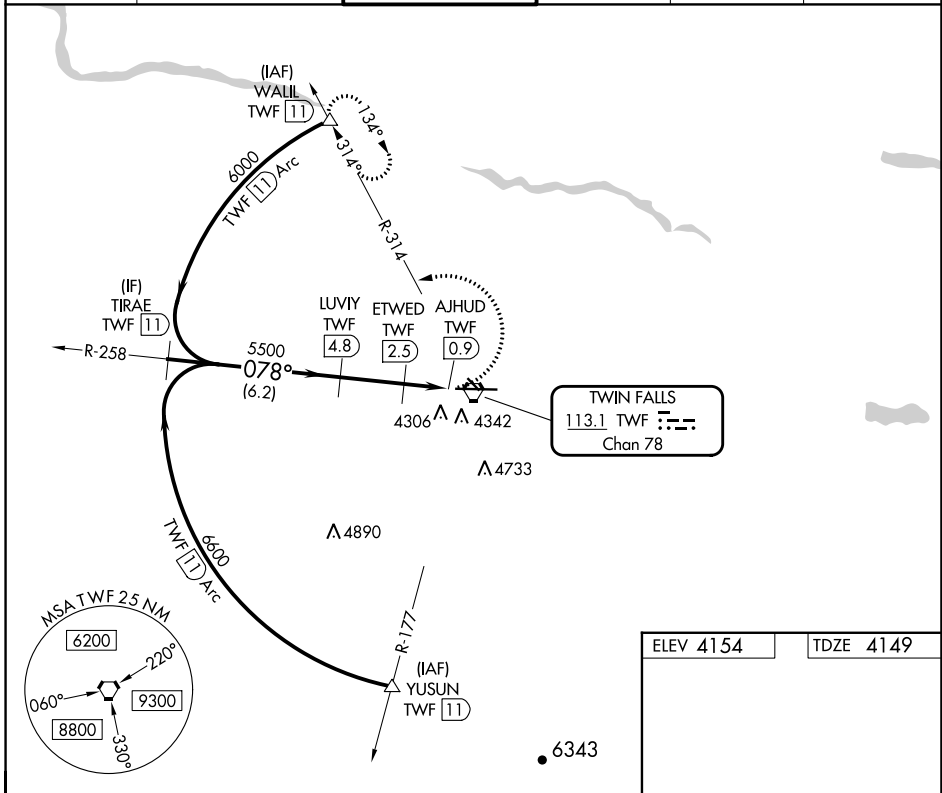
VOR/DME RWY 8

JOSLIN FLD/MAGIC VALLEY RGNL (TWF)

⚠ Circling to Rwy 30 NA at night. VDP NA with Jerome altimeter setting. When local altimeter setting not received, use Jerome altimeter setting and increase all MDA 60 feet and S-8 Cats C and D visibility ¼ mile and Circling Cat C visibility ¼ mile.

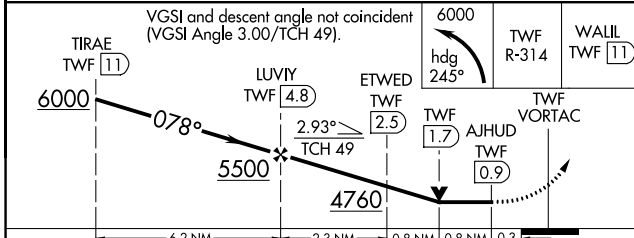
MISSED APPROACH: Climbing left turn to 6000 on heading 245° and TWF R-314 to WALL/TWF 11 DME and hold.

ASOS 135.025	TWIN FALLS APP CON* 126.7 353.75	TWIN FALLS TOWER* 118.2 (CTAF) 0 317.5	GND CON 121.7	CLNC DEL 123.65	UNICOM 122.95
------------------------	--	--	-------------------------	---------------------------	-------------------------



NW-1, 22 FEB 2024 to 21 MAR 2024

NW-1, 22 FEB 2024 to 21 MAR 2024



ELEV 4154	TDZE 4149
-----------	-----------

REIL Rwy 8 0
HIRL Rwy 8-26 0

CATEGORY	A	B	C	D
S-8	4560-1	411 (500-1)	4560-1 1/8	411 (500-1 1/8)
C CIRCLING	4700-1 546 (600-1)	4780-1 626 (700-1)	5100-2 3/4 946 (1000-2 3/4)	5100-3 946 (1000-3)