

APP CRS	Rwy Idg	3403
222°	TDZE	7
	Apt Elev	7

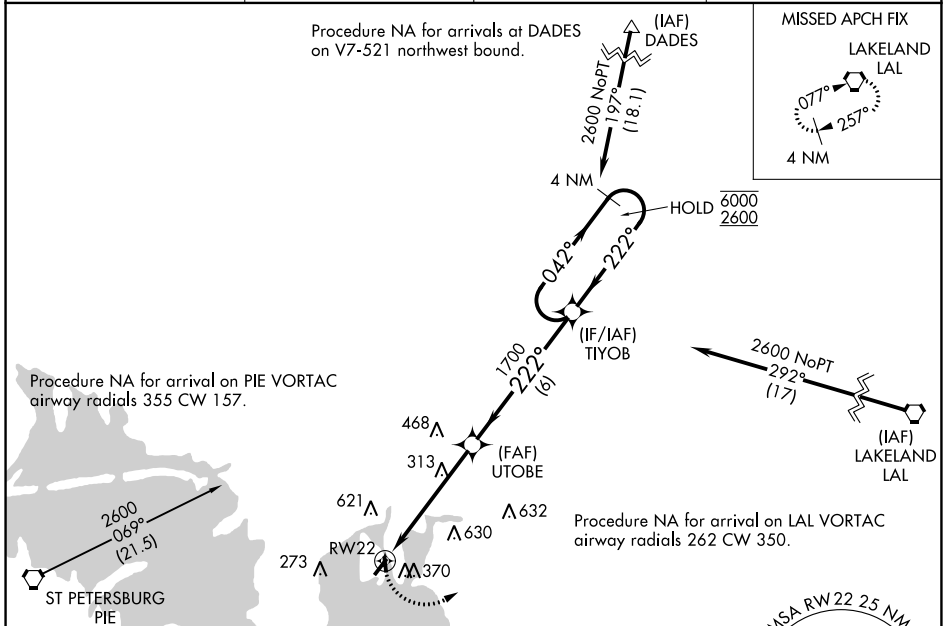
RNAV (GPS) RWY 22

PETER O KNIGHT (TPF)

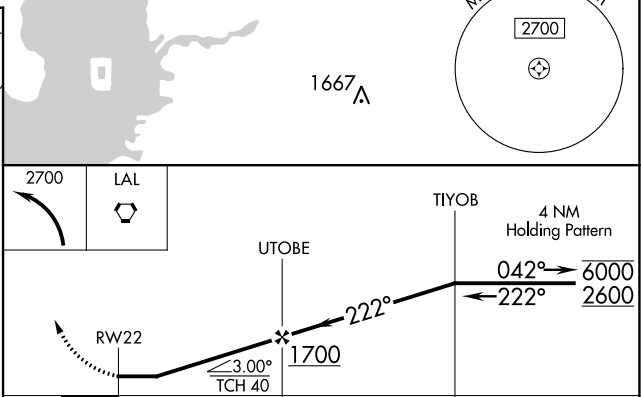
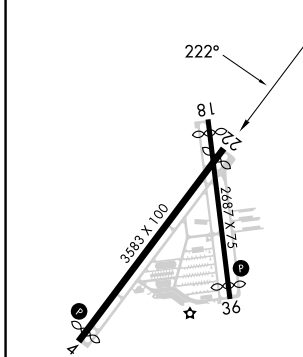
RNP APCH.
 ⚠ Circling NA northwest of Rwy 4-22. Procedure NA at night. Rwy 22 helicopter visibility reduction below 1 SM NA. When local altimeter setting not received, use Tampa Intl altimeter setting and increase all MDA 20 feet. Circling NA to Rwy 18.

MISSED APPROACH: Climbing left turn to 2700 direct LAL VORTAC and hold.

AWOS-3 118.925	TAMPA APP CON 119.9 290.3	CLNC DEL 119.8	UNICOM 122.725 (CTAF) 0
--------------------------	-------------------------------------	--------------------------	--



ELEV 7	D	TDZE 7
--------	----------	--------



CATEGORY	A	B	C	D
LNAV MDA	580-1	573 (600-1)	NA	
C CIRCLING	720-1	713 (800-1)	NA	

SE-3, 22 FEB 2024 to 21 MAR 2024

SE-3, 22 FEB 2024 to 21 MAR 2024

WAAS CH 63220 W36A	APP CRS 344°	Rwy Idg 2311 TDZE 7 Apt Elev 7
--	------------------------	---

RNAV (GPS) RWY 36

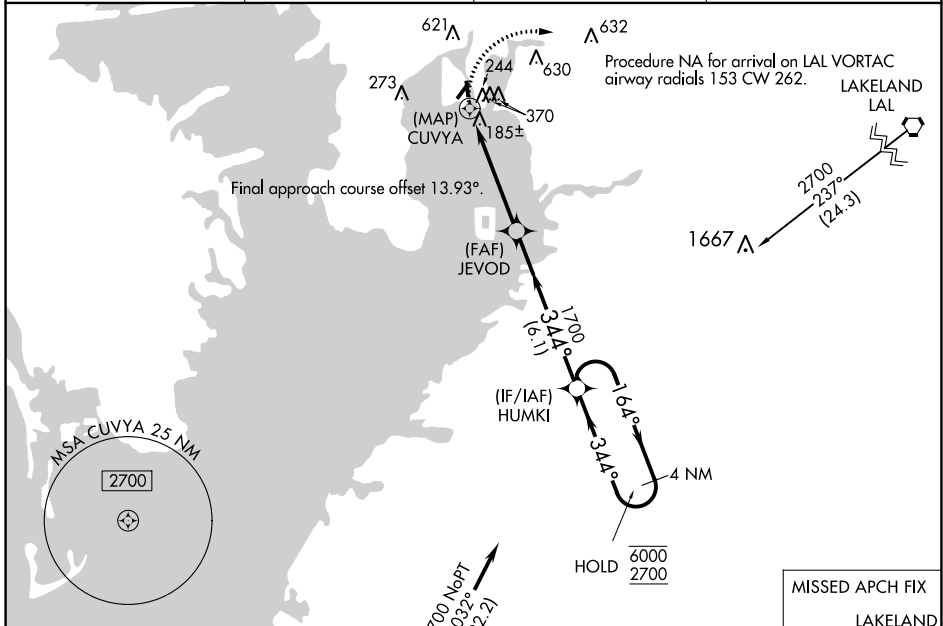
PETER O KNIGHT (TPF)

RNP APCH.

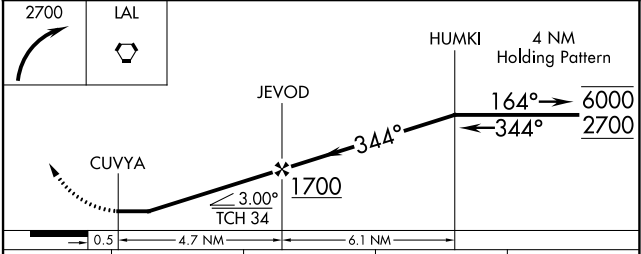
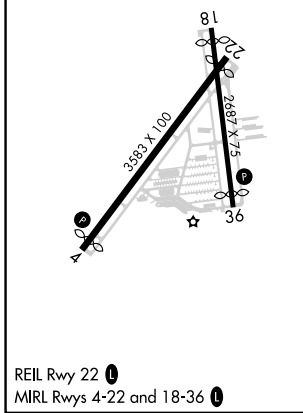
⚠ Circling NA northwest of Rwy 4-22. Procedure NA at night. Rwy 36 helicopter visibility reduction below 1 SM NA. When local altimeter setting not received, use Tampa Intl altimeter setting and increase all MDA 20 feet. Circling NA to Rwy 18.

MISSED APPROACH: Climbing right turn to 2700 direct LAL VORTAC and hold.

AWOS-3 118.925	TAMPA APP CON 119.9 290.3	CLNC DEL 119.8	UNICOM 122.725 (CTAF) 0
--------------------------	-------------------------------------	--------------------------	-----------------------------------



ELEV 7	D	TDZE 7
--------	----------	--------



CATEGORY	A	B	C	D
LP MDA	440-1	433 (500-1)		NA
LNAV MDA	500-1	493 (500-1)		NA
C CIRCLING	720-1	713 (800-1)		NA

SE-3, 22 FEB 2024 to 21 MAR 2024

SE-3, 22 FEB 2024 to 21 MAR 2024