

APP CRS 007°	Rwy Idg TDZE Apt Elev	N/A N/A 4862
------------------------	-----------------------------	---

RNAV (GPS)-A

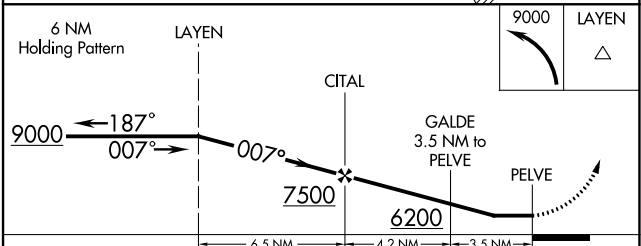
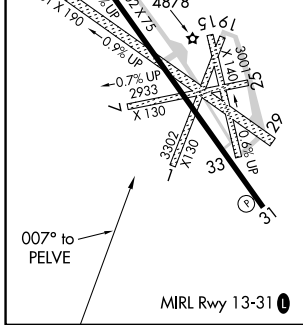
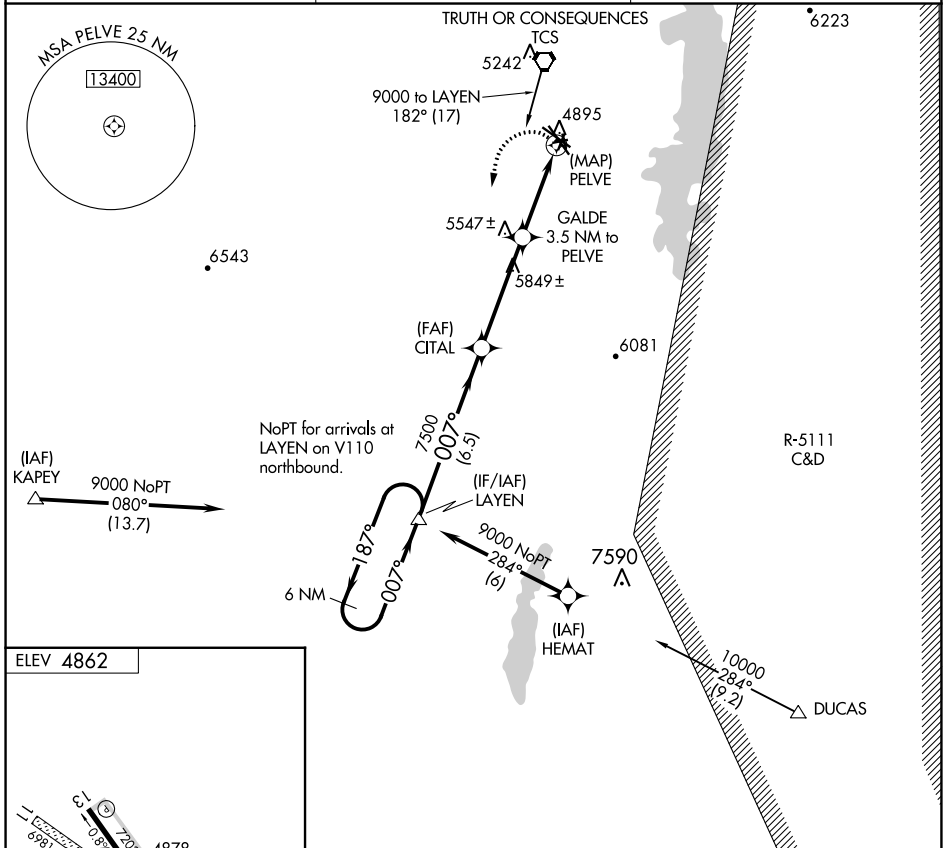
TRUTH OR CONSEQUENCES MUNI (TCS)

RNP APCH-GPS.

▼ DUCAS transition NA when R-5111 A-D active.
 ▲ NA Circling NA to Rwys 1, 7, 11, 15, 19, 25, 29 and 33.

MISSED APPROACH: Climbing left turn to 9000 direct LAYEN WP and hold.

ASOS 120.675	ALBUQUERQUE CENTER 128.2 285.5	UNICOM 122.8 (CTAF) 0
------------------------	--	--



CATEGORY	A	B	C	D
CIRCLING	5300-1 438 (500-1)	5360-1 498 (500-1)	5580-2 718 (800-2)	6000-3 1138 (1200-3)

SW-1, 22 FEB 2024 to 21 MAR 2024

SW-1, 22 FEB 2024 to 21 MAR 2024

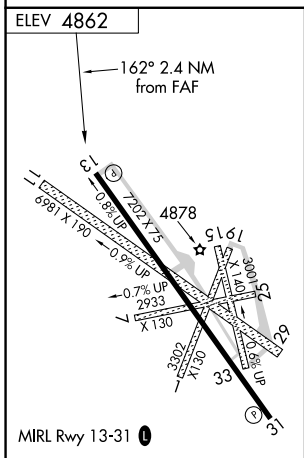
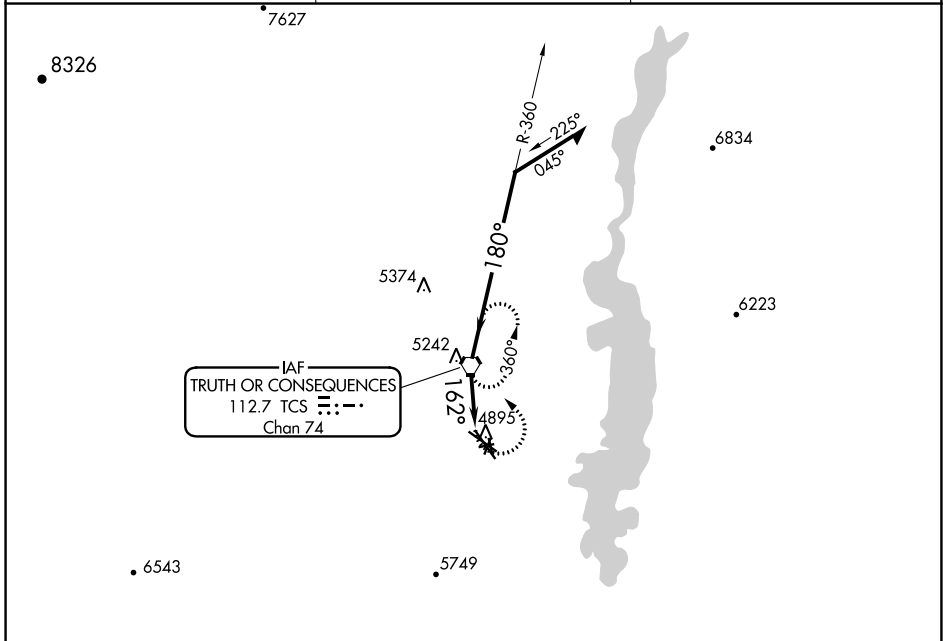
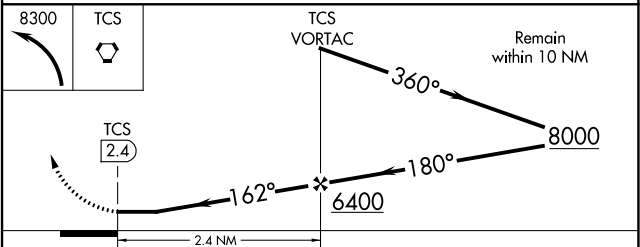
VORTAC TCS 112.7 Chan 74	APP CRS 162°	Rwy Idg TDZE Apt Elev N/A N/A 4862
--	------------------------	--

VOR-A

TRUTH OR CONSEQUENCES MUNI (TCS)

<p>Circling NA to Rwys 1, 7, 11, 15, 19, 25, 29 and 33.</p>	<p>MISSED APPROACH: Climbing left turn to 8300 direct TCS VORTAC and hold, continue climb-in-hold to 8300.</p>
---	--

ASOS 120.675	ALBUQUERQUE CENTER 128.2 285.5	UNICOM 122.8 (CTAF)
------------------------	--	-------------------------------

FAF to MAP 2.4 NM						
Knots	60	90	120	150	180	
Min:Sec	2:24	1:36	1:12	0:58	0:48	
CATEGORY	A		B		C	D
CIRCLING	5560-1 698 (700-1)		5580-2 718 (800-2)		6000-3 1138 (1200-3)	

SW-1, 22 FEB 2024 to 21 MAR 2024

SW-1, 22 FEB 2024 to 21 MAR 2024