

LOC/DME I-SVC 111.7 Chan 54	APP CRS 262°	Rwy Idg TDZE Apt Elev 6803 5380 5446
---	------------------------	--

LOC RWY 26

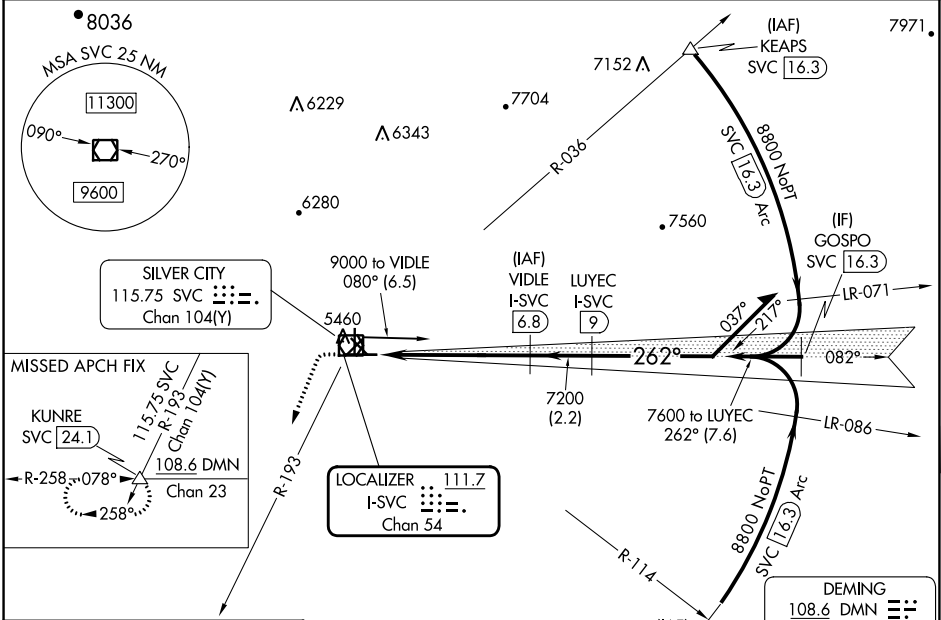
GRANT COUNTY (SVC)

DME required.
 NA Circling NA to Rwys 3, 12, 17, 21, 30 and 35.

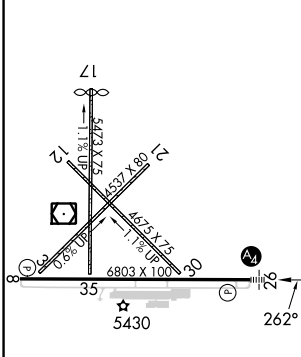


MISSED APPROACH: Climb to 5900 then climbing left turn to 10000 on heading 190° and SVC VOR/DME R-193 to KUNRE INT/SVC VOR/DME 24.1 DME and hold.

AWOS-3 126.725	ALBUQUERQUE CENTER 134.45 327.15	UNICOM 122.8 (CTAF) 0
--------------------------	--	---------------------------------



ELEV 5446	TDZE 5380
-----------	-----------



5900	10000	SVC R-193	KUNRE	VIDLE I-SVC 6.8	Remain within 10 NM
↑	hdg 190°		△		
Use I-SVC DME when on the localizer course.					
I-SVC 1.2	I-SVC 3.3	≤ 3.00° TCH 45			
2.1 NM		3.5 NM		2.2 NM	

CATEGORY	A	B	C	D
S-26	6100-¾ 720 (700-¾)		6100-1¾ 720 (700-1¾)	
CIRCLING	6100-1 654 (700-1)		6100-2 6740-3 654 (700-2)	1294 (1300-3)

SW-1, 22 FEB 2024 to 21 MAR 2024

SW-1, 22 FEB 2024 to 21 MAR 2024

WAAS CH 87100 W26A	APP CRS 262°	Rwy Idg TDZE 5380 Apt Elev 5446	6803
--	------------------------	---	-------------

RNAV (GPS) RWY 26

GRANT COUNTY (SVC)

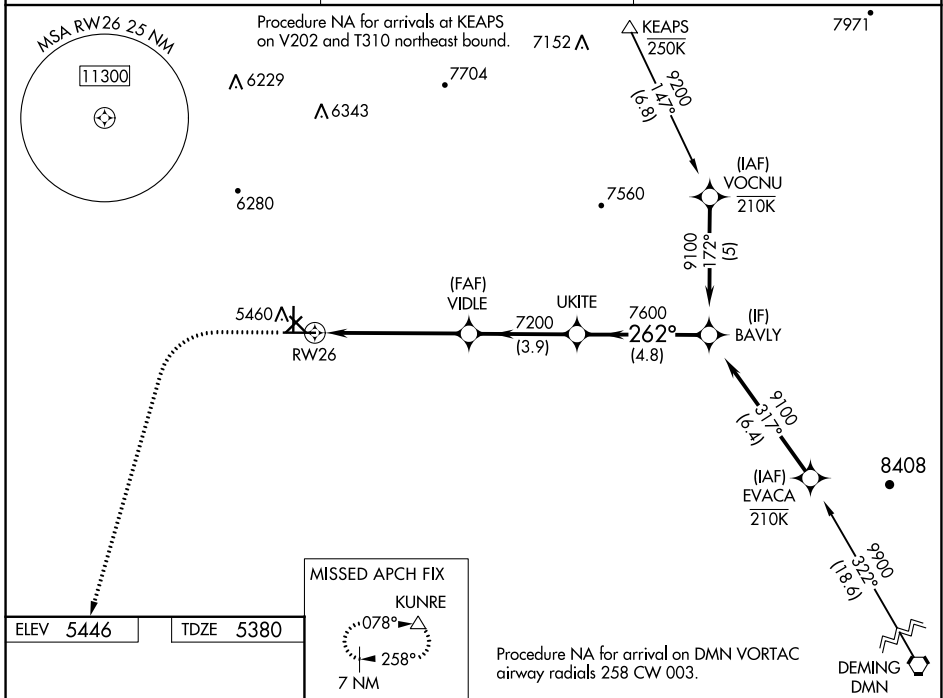
RNP APCH-GPS.

⚠ Circling NA to Rwys 3, 12, 17, 21, 30 and 35. Inop table does not apply to LPV and LNAV/VNAV. For uncompensated Baro-VNAV systems, LNAV/VNAV NA below -25°C or above 54°C.

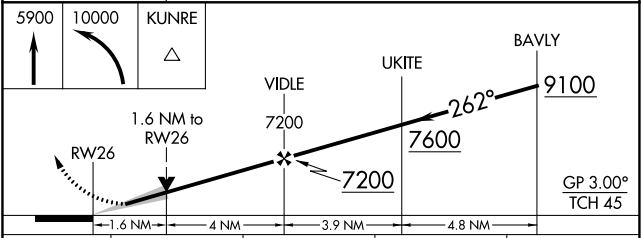
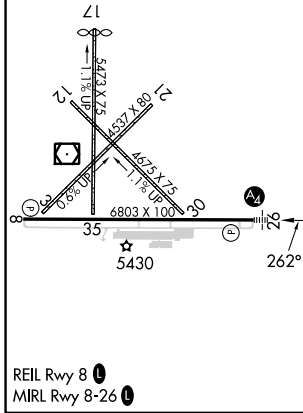
MALS **A2**

MISSED APPROACH: Climb to 5900 then climbing left turn to 10000 direct KUNRE and hold.

AWOS-3 126.725	ALBUQUERQUE CENTER 134.45 327.15	UNICOM 122.8 (CTAF) 1
--------------------------	--	--



ELEV 5446	TDZE 5380
------------------	------------------



CATEGORY	A	B	C	D
LPV DA		5630- ³ / ₄	250 (200- ³ / ₄)	
LNAV/VNAV DA		5630- ³ / ₄	250 (200- ³ / ₄)	
LNAV MDA	5940- ³ / ₄	560 (500- ³ / ₄)	5940-1 ³ / ₈	560 (500-1 ³ / ₈)
C CIRCLING	5940-1 494 (500-1)	5960-1 514 (600-1)	6100-1 ³ / ₄ 654 (700-1 ³ / ₄)	6740-3 1294 (1300-3)

SW-1, 22 FEB 2024 to 21 MAR 2024

SW-1, 22 FEB 2024 to 21 MAR 2024

APP CRS	Rwy Idg	6803
082°	TDZE	5386
	Apt Elev	5446

RNAV (GPS) RWY 8

GRANT COUNTY (SVC)

RNP APCH-GPS.

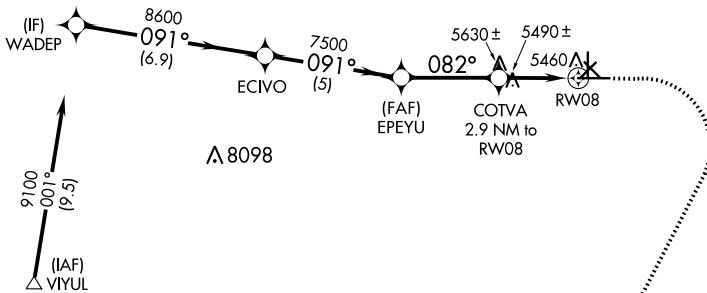
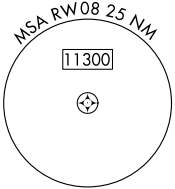
▼
▲ Rwy 8 helicopter visibility reduction below 3/4 SM NA.

MISSED APPROACH: Climb to 5900 then climbing right turn to 10000 direct CITUR and on track 216° to KUNRE and hold.

AWOS-3
126.725

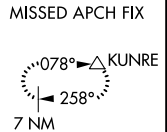
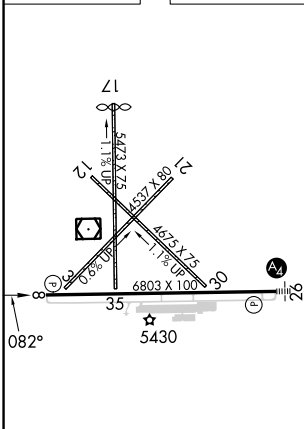
ALBUQUERQUE CENTER
134.45 327.15

UNICOM
122.8 (CTAF) 1



Procedure NA for arrivals at VYIUL on V202 southwest bound.

ELEV 5446 TDZE 5386



5900	10000	CITUR	tr 216°	KUNRE
WADEP	ECIVO	EPEYU	COTVA 2.9 NM to RW08	RW08
9100	8600	7500	6360	
6.9 NM		5 NM	3.5 NM	1.9 NM
1 NM				
CATEGORY	A	B	C	D
LNAV MDA	5740-1 354 (300-1)			

REIL Rwy 8
MIRL Rwy 8-26

SW-1, 22 FEB 2024 to 21 MAR 2024

SW-1, 22 FEB 2024 to 21 MAR 2024

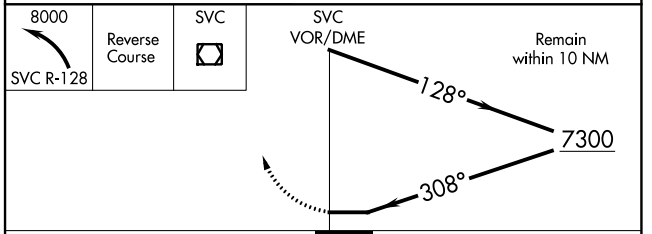
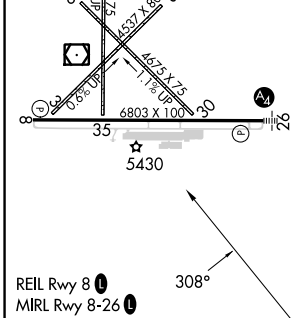
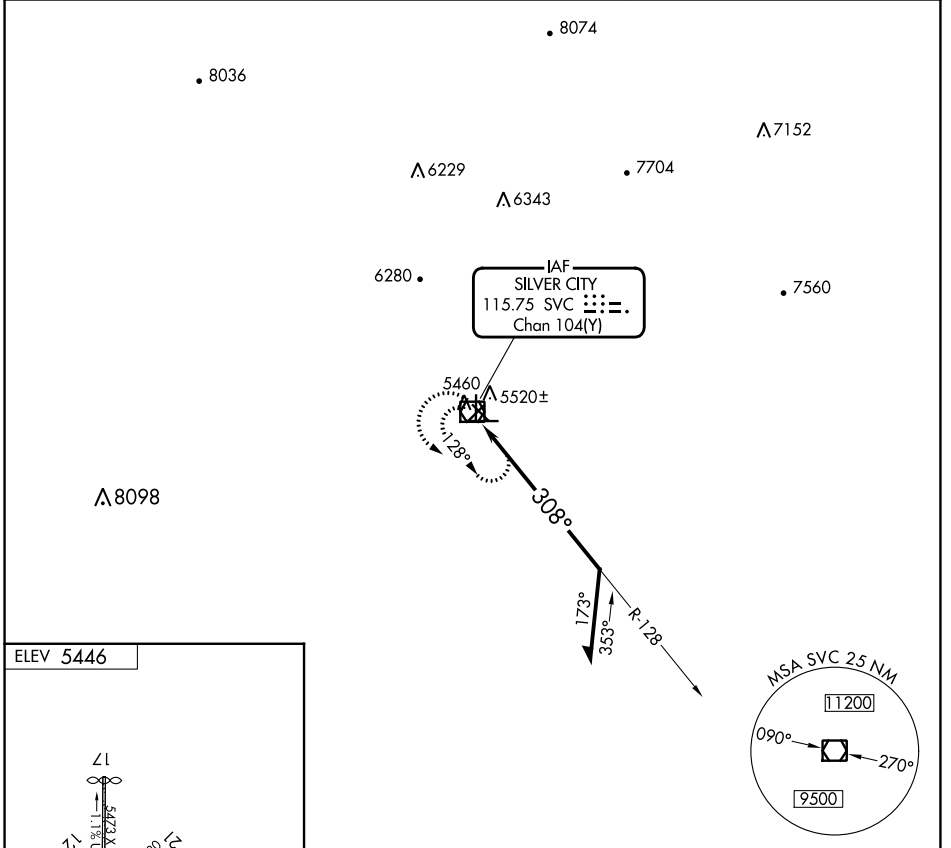
VOR/DME SVC 115.75 Chan 104(Y)	APP CRS 308°	Rwy Idg TDZE Apt Elev 5446	N/A N/A 5446
--	------------------------	--	---

VOR-A
GRANT COUNTY (SVC)

⚠ When local altimeter setting not received, procedure NA. Circling to Rwy 3, 12, 17, 21, 30, 35 NA at night.

⚠ MISSED APPROACH: Climbing left turn to 8000 via SVC R-128, then reverse course to SVC VOR/DME and hold.

AWOS-3 126.725	ALBUQUERQUE CENTER 134.45 327.15	UNICOM 122.8 (CTAF)
--------------------------	--	-------------------------------



CATEGORY	A	B	C	D
CIRCLING	5940-1 494 (500-1)	5960-1 514 (600-1)	6100-1¾ 654 (700-1¾)	6740-3 1294 (1300-3)