

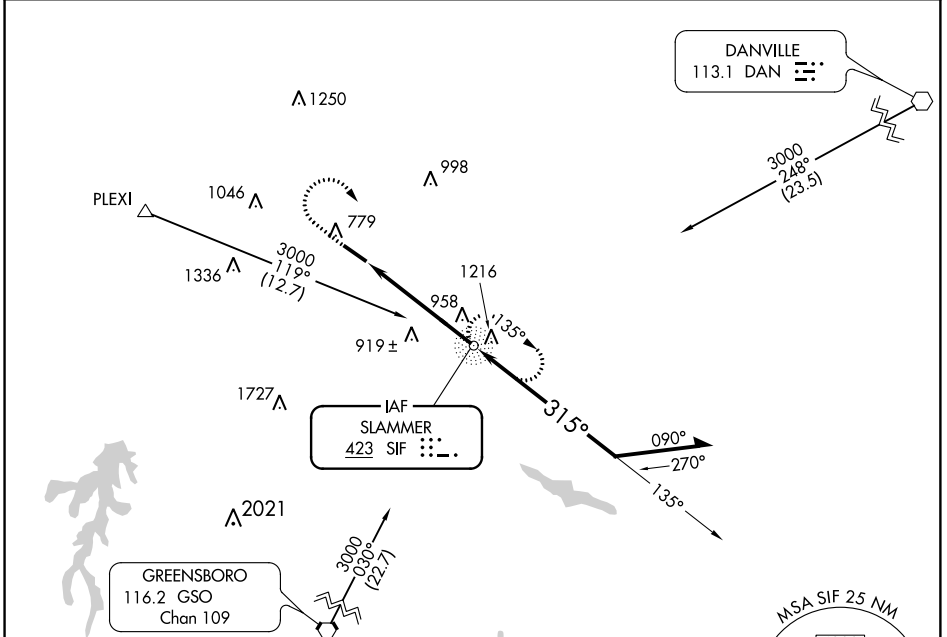
NDB SIF	APP CRS	Rwy Idg	5200
423	315°	TDZE	668
		Apt Elev	694

NDB RWY 31

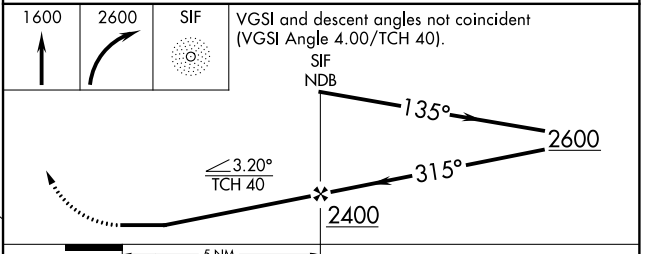
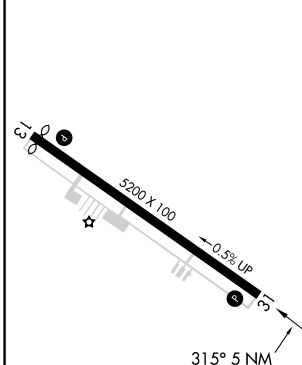
ROCKINGHAM COUNTY NC SHILOH (SIF)

▼ Rwy 31 helicopter visibility reduction below 1 SM NA.
▲ Procedure NA at night.
 MISSED APPROACH: Climb to 1600 then climbing right turn to 2600 direct SIF NDB and hold.

AWOS-3 119,775	GREENSBORO APP CON 124.35 269.225	UNICOM 122.8 (CTAF) 0
--------------------------	---	---------------------------------



ELEV 694	TDZE 668
----------	----------



REIL Rwy 31 0
 HIRL Rwy 13-31 0

FAF to MAP 5 NM

Knots	60	90	120	150	180
Min:Sec	5:00	3:20	2:30	2:00	1:40

CATEGORY	A	B	C	D
S-31	1220-1 552 (600-1)		1220-1½ 552 (600-1½)	1220-1¾ 552 (600-1¾)
CIRCLING	1280-1 586 (600-1)		1320-1¾ 626 (700-1¾)	1320-2 626 (700-2)

SE-2, 20 JUN 2019 to 18 JUL 2019

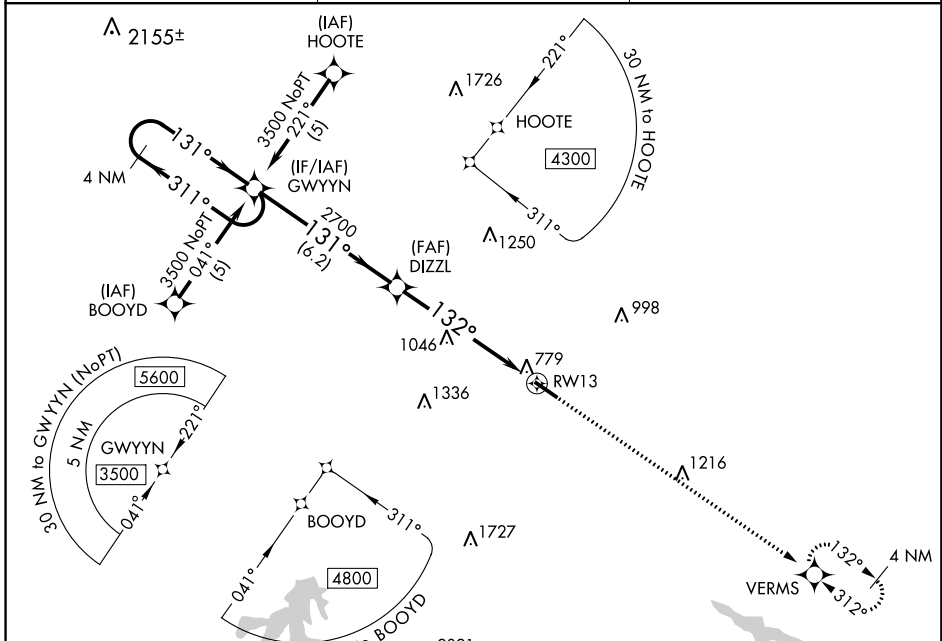
SE-2, 20 JUN 2019 to 18 JUL 2019

APP CRS
132°
Rwy Idg **4999**
TDZE **691**
Apt Elev **694**

RNAV (GPS) RWY 13
ROCKINGHAM COUNTY NC SHILOH (SIF')

RNP APCH.
 ▼ Rwy 13 helicopter visibility reduction below 1 SM NA.
 ▲ Procedure NA at night.
 MISSED APPROACH: Climb to 3600 direct VERMS and hold.

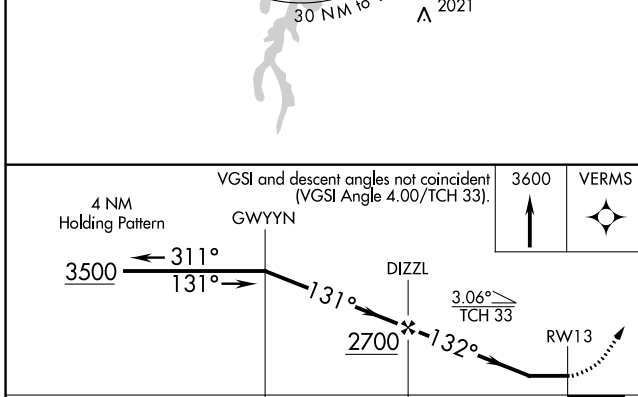
AWOS-3 **119.775** GREENSBORO APP CON **124.35 269.225** UNICOM **122.8 (CTAF) 0**



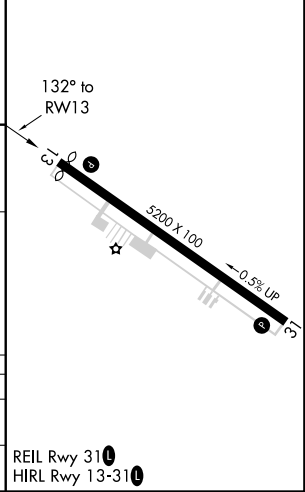
SE-2, 20 JUN 2019 to 18 JUL 2019

SE-2, 20 JUN 2019 to 18 JUL 2019

ELEV 694 TDZE 691



CATEGORY	A	B	C	D
LNAV MDA	1300-1	609 (700-1)	1300-1¼ 609 (700-1¼)	1300-2 609 (700-2)
CIRCLING	1300-1	606 (700-1)	1320-1¼ 626 (700-1¼)	1320-2 626 (700-2)



APP CRS	Rwy Idg	5200
312°	TDZE	668
	Apt Elev	694

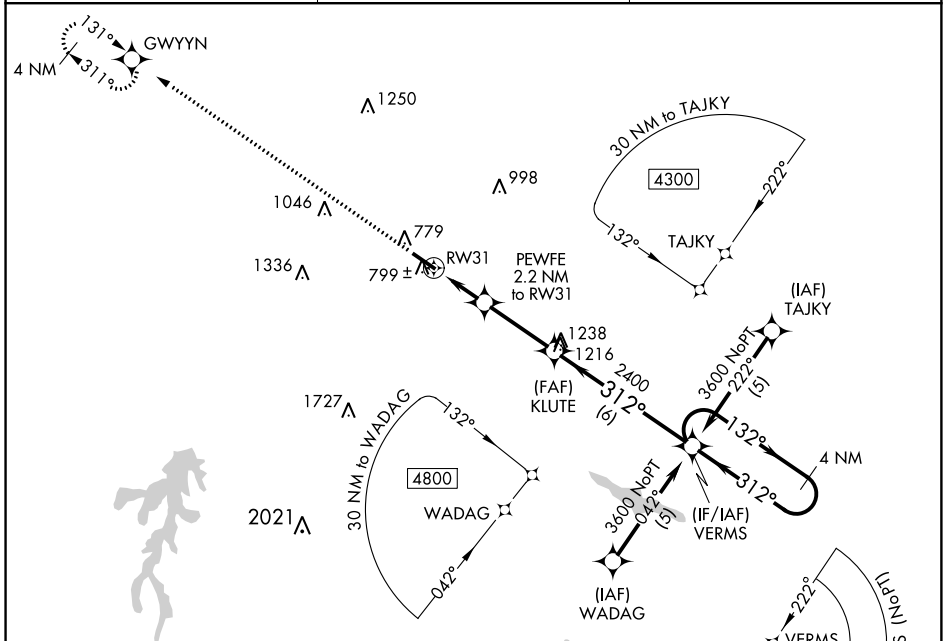
RNAV (GPS) RWY 31

ROCKINGHAM COUNTY NC SHILOH (SIF)

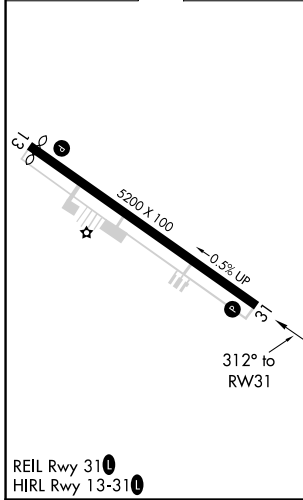
RNP APCH. MISSED APPROACH: Climb to 3500 direct GWYYN and hold.

▼ Rwy 31 helicopter visibility reduction below 1 SM NA. **▲** Procedure NA at night.

AWOS-3 119.775	GREENSBORO APP CON 124.35 269.225	UNICOM 122.8 (CTAF) 0
--------------------------	---	---------------------------------



ELEV	694	TDZE	668
------	------------	------	------------



3500	GWYYN	VGSI and descent angles not coincident (VGSI Angle 4.00/TCH 40).	
	PEWFE 2.2 NM to RWY 31	KLUTE	VERMS 4 NM Holding Pattern
	1400	2400	3600
	2.2 NM	3 NM	6 NM

CATEGORY	A	B	C	D
LNAV MDA	1060-1 392 (400-1)			1060-1½ 392 (400-1½)
CIRCLING	1280-1	586 (600-1)	1320-1¾ 626 (700-1¾)	1320-2 626 (700-2)

SE-2, 20 JUN 2019 to 18 JUL 2019

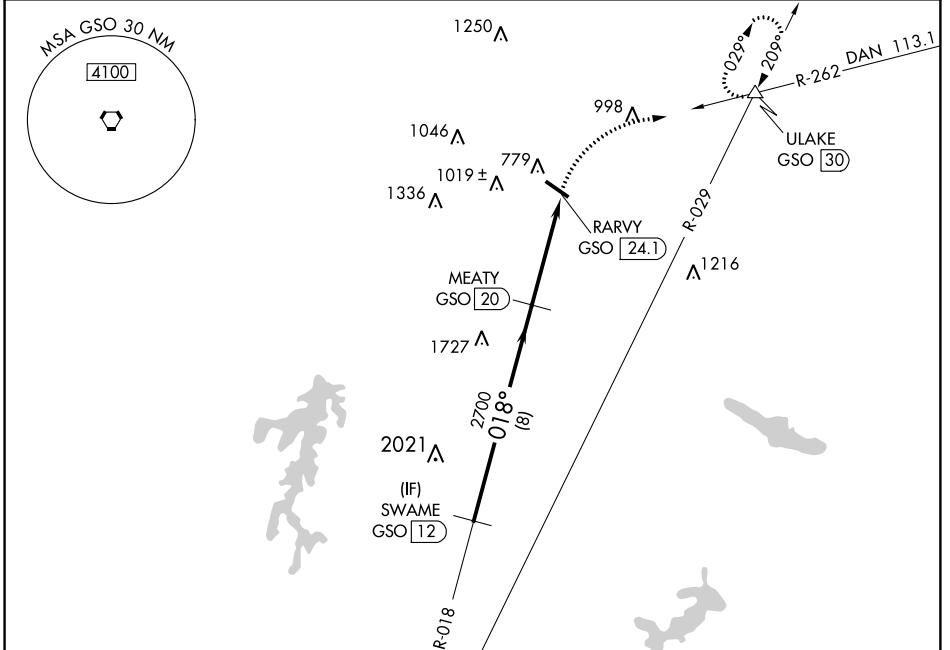
SE-2, 20 JUN 2019 to 18 JUL 2019

VORTAC GSO 116.2 Chan 109	APP CRS 018°	Rwy Idg TDZE Apt Elev	N/A N/A 694
---	------------------------	-----------------------------	--

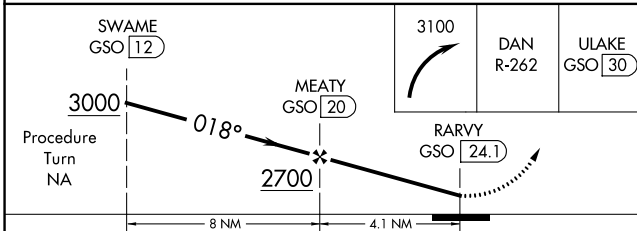
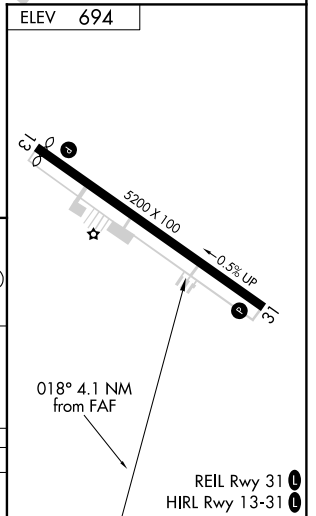
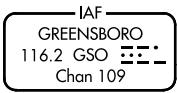
VOR/DME-A
ROCKINGHAM COUNTY NC SHILOH (SIF)

NA	Helicopter visibility reduction NA. Procedure NA at night.	MISSED APPROACH: Climbing right turn to 3100 via DAN VOR R-262 to ULAKE/GSO 30 DME and hold.
-----------	---	--

AWOS-3 119.775	GREENSBORO APP CON 124.35 269.225	UNICOM 122.8 (CTAF)
--------------------------	---	-------------------------------



Procedure NA for arrivals on GSO VORTAC airway radials 337 CW 054.



CATEGORY	A	B	C	D
CIRCLING	1400-1 706 (800-1)	1400-1¼ 706 (800-1¼)	1400-2 706 (800-2)	1400-2¼ 706 (800-2¼)

SE-2, 20 JUN 2019 to 18 JUL 2019

SE-2, 20 JUN 2019 to 18 JUL 2019