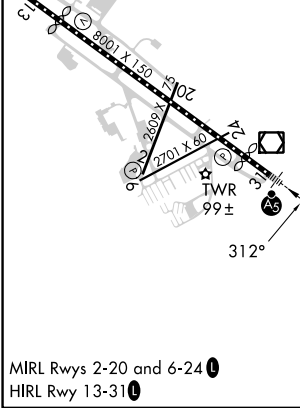
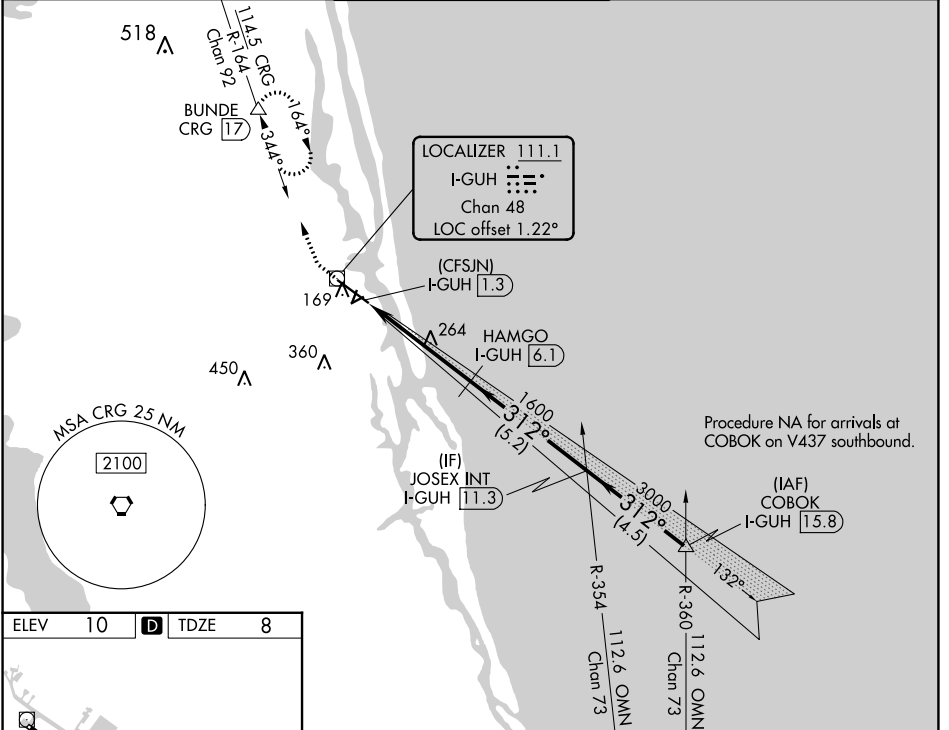


LOC/DME I-GUH 111.1 Chan 48	APP CRS 312°	Rwy ldg 5925 TDZE 8 Apt Elev 10
---	------------------------	--

ILS or LOC RWY 31
NORTHEAST FLORIDA RGNL (SGJ)

DME required.	MALSR	MISSED APPROACH: Climb to 3000 on heading 312° and on CRG VORTAC R-164 to BUNDE/CRG 17 DME and hold, continue climb-in-hold to 3000.
▲ Circling Rwy 2, 6 NA at night. For inop ALS, increase S-LOC 31 Cat C/D visibility to 1½ SM.		

ATIS 119.625	JACKSONVILLE APP CON 120.75	ST AUGUSTINE TOWER ★ 127.625 (CTAF) 269.475	GND CON 121.175 251.125	UNICOM 122.95
------------------------	---------------------------------------	---	-----------------------------------	-------------------------



ELEV 10	D	TDZE 8	
3000	CRG R-164	BUNDE △	VGSi and ILS glidepath not coincident (VGSi Angle 3.00/TCH 54).
hdg 312°			
*LOC only.			
(CFSJN) I-GUH 1.3	*I-GUH 2.7	HAMGO I-GUH 6.1	JOSEX INT I-GUH 11.3
			COBOK I-GUH 15.8
			GS 3.00° TCH 57

CATEGORY	A	B	C	D
S-ILS 31	258-½ 250 (300-½)			
S-LOC 31	520-½	512 (600-½)	520-1	512 (600-1)
C CIRCLING	520-1	580-1	680-1¾	740-2½
	510 (600-1)	570 (600-1)	670 (700-1¾)	730 (800-2½)

WAAS CH 77711	APP CRS 130°	Rwy ldg TDZE Apt Elev	6144 10 10
W13A			

RNAV (GPS) RWY 13

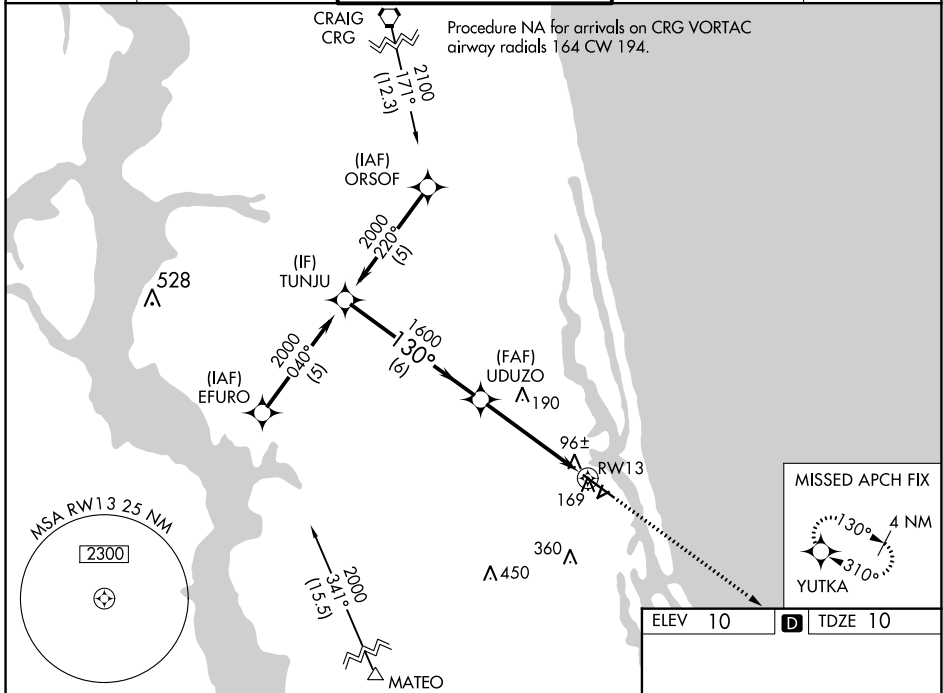
NORTHEAST FLORIDA RGNL (SGJ)

RNP APCH

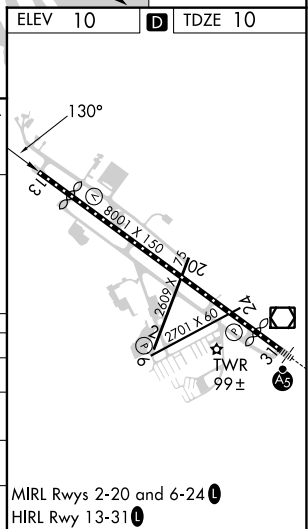
▼ Baro-VNAV NA when using Jacksonville NAS (Towers Fld) altimeter setting. For uncompensated Baro-VNAV systems, LNAV/VNAV NA below -15°C (5°F) or above 54°C (130°F). Rwy 13 helicopter visibility reduction below ¼ SM NA. When local altimeter setting not received, use Jacksonville NAS (Towers Fld) altimeter setting; increase all DA 57 feet and all MDA 60 feet. Increase LPV and LNAV/VNAV all Cats, LNAV Cat C and Circling Cat C/D visibility ½ SM. Circling Rwy 2, 6 NA at night.

MISSED APPROACH:
Climb to 2000 direct YUTKA and hold.

ATIS 119.625	JACKSONVILLE APP CON 120.75	ST AUGUSTINE TOWER ★ 127.625 (CTAF) 269.475	GND CON 121.175 251.125	UNICOM 122.95
------------------------	---------------------------------------	---	-----------------------------------	-------------------------



Procedure Turn NA	TUNJU	VGSIs and RNAV glidepath not coincident (VGSIs Angle 3.00/TCH 44).		2000 YUTKA
GP 3.00° TCH 58				
CATEGORY	A	B	C	D
LPV DA		357-1¼	347 (400-1¼)	
LNAV/ VNAV DA		391-1¼	381 (400-1¼)	
LNAV MDA	460-1	450 (500-1)	460-1¼ 450 (500-1¼)	460-1½ 450 (500-1½)
CIRCLING	520-1 510 (600-1)	580-1 570 (600-1)	660-1¾ 650 (700-1¾)	780-2½ 770 (800-2½)



SE-3, 22 FEB 2024 to 21 MAR 2024

SE-3, 22 FEB 2024 to 21 MAR 2024

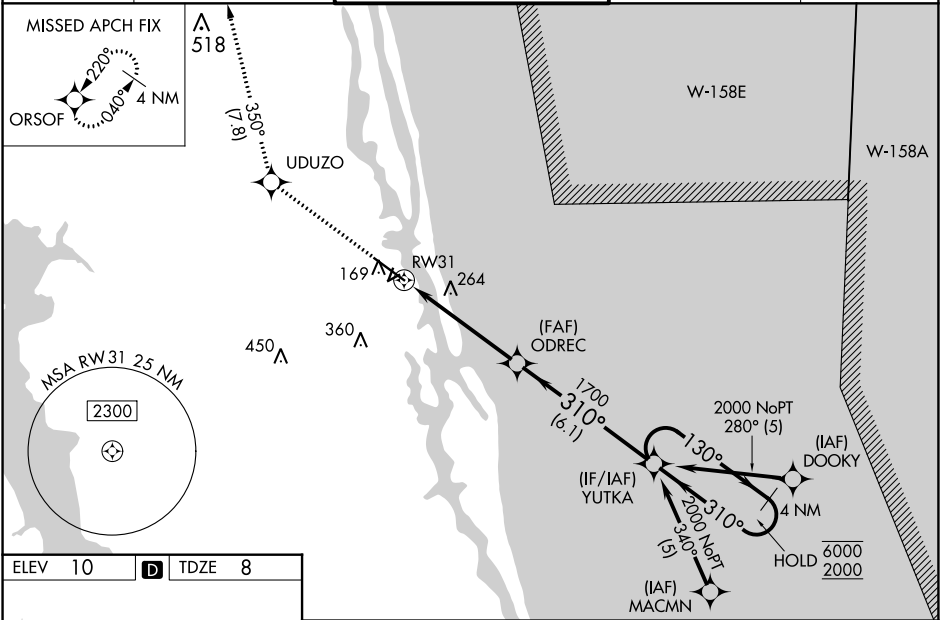
WAAS CH 77727 W31A	APP CRS 310°	Rwy Idg 5925 TDZE 8 Apt Elev 10
--	------------------------	--

RNAV (GPS) RWY 31

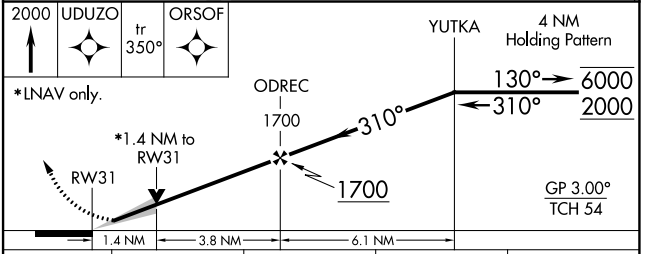
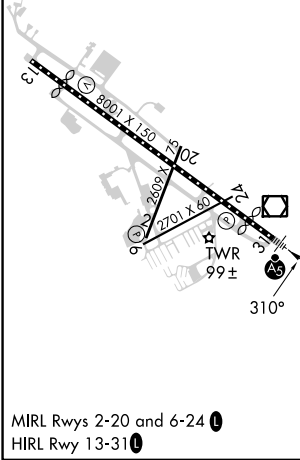
NORtheast FLORIDA RGNL (SGJ)

RNP APCH. Circling Rwy 2, 6 NA at night. For uncompensated Baro-VNAV systems, LNAV/VNAV NA below -18°C or above 54°C. For inop ALS, increase LNAV/VNAV all Cats visibility to 7/8 SM and LNAV Cat C/D visibility to 1 3/8 SM.		MALSR 	MISSED APPROACH: Climb to 2000 direct UDUZO and on track 350° to ORSOF and hold.
---	--	------------------	---

ATIS 119.625	JACKSONVILLE APP CON 120.75	ST AUGUSTINE TOWER ★ 127.625 (CTAF) 269.475	GND CON 121.175 251.125	UNICOM 122.95
-------------------------------	--	--	--	--------------------------------



ELEV 10	D	TDZE 8
---------	----------	--------



CATEGORY	A	B	C	D
LPV DA		218-1/2	210 (300-1/2)	
LNAV/VNAV DA		292-1/2	284 (300-1/2)	
LNAV MDA	520-1/2	512 (600-1/2)	520-1	512 (600-1)
C CIRCLING	520-1 510 (600-1)	580-1 570 (600-1)	680-1 3/4 670 (700-1 3/4)	780-2 1/2 770 (800-2 1/2)

SE-3, 22 FEB 2024 to 21 MAR 2024

SE-3, 22 FEB 2024 to 21 MAR 2024