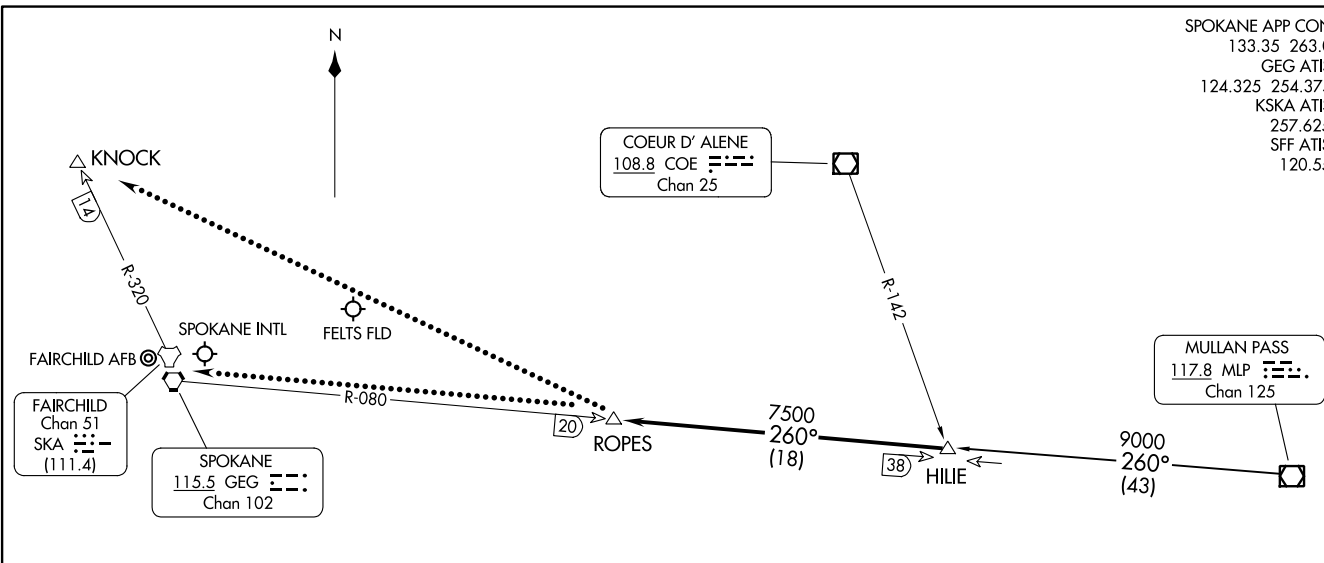


HILIE THREE ARRIVAL
(HILIE;HILIE3) 15JUN23

(HILIE;HILIE3) 23334
HILIE THREE ARRIVAL

SPOKANE APP CON
133.35 263.0
GEG ATIS
124.325 254.375
KSKA ATIS
257.625
SFF ATIS
120.55



AL-403 (FAA)

SPOKANE, WASHINGTON

ARRIVAL ROUTE DESCRIPTION

MULLAN PASS TRANSITION (MLP.HILIE3): From over MLP VOR/DME on MLP R-260 to HILIE. Thence. . .

. . . From over HILIE on SPOKANE VORTAC (GEG) R-080 to ROPES. Expect RADAR vectors to final approach course.

LOST COMMUNICATIONS

After ROPES:

LANDING SPOKANE INTL or FELTS FLD: Proceed to GEG VORTAC on GEG R-080, maintain last assigned altitude to GEG.

LANDING FAIRCHILD AFB: Proceed to KNOCK direct, maintain last assigned altitude to KNOCK.

NOTE: DME and RADAR required.

NOTE: Chart not to scale.

SPOKANE, WASHINGTON

ARRIVAL ROUTE DESCRIPTION

EPHRATA TRANSITION (EPH.ZOOMR2): From over EPH VORTAC on EPH R-065 to ZOOMR. Thence. . . .

MOSES LAKE TRANSITION (MWH.ZOOMR2): From over MWH VOR/DME on MWH R-054 to ZOOMR. Thence. . . .

. . . . From over ZOOMR on SPOKANE VORTAC (GEG) R-239 to GANGS. Expect RADAR vectors to final approach course.

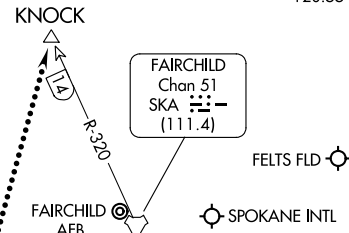
LOST COMMUNICATIONS

After GANGS:

LANDING SPOKANE INTL or FELTS FLD: Proceed to GEG VORTAC on GEG R-239, maintain last assigned altitude to GEG.

LANDING FAIRCHILD AFB: Proceed to KNOCK DME fix direct, maintain last assigned altitude to KNOCK.

SPOKANE APP CON	123.75	282.25
GEG ATIS	124.325	254.375
KSKA ATIS	257.625	
SFF ATIS	120.55	



SPOKANE
115.5 GEG
Chan 102

PULLMAN
117.15 PUW
Chan 118(Y)

EPHRATA
112.6 EPH
Chan 73

MOSES LAKE
115.0 MWH
Chan 97

YAKIMA
116.0 YKM
Chan 107

ZOOMR
059°
(16)

5000
065°
(46)

5000
054°
(43)

GANGS
13

R-296

R-310

NOTE: DME and RADAR required.
NOTE: Chart not to scale.

ZOOMR TWO ARRIVAL
(ZOOMR.ZOOMR2) 15JUN23

SPOKANE, WASHINGTON

(ZOOMR.ZOOMR2) 23334
ZOOMR TWO ARRIVAL

AL-403 (FAA)

SPOKANE, WASHINGTON