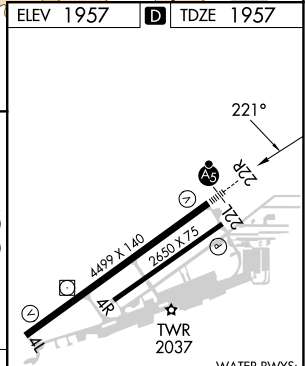
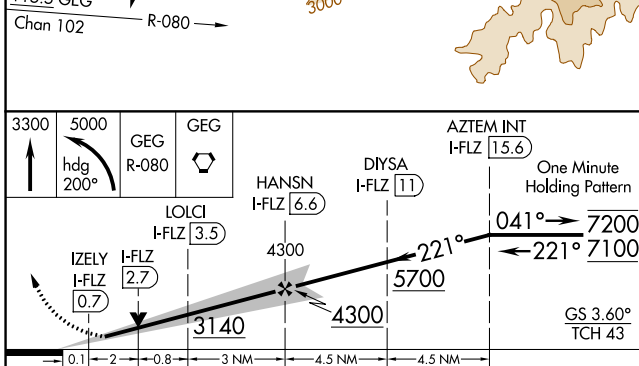
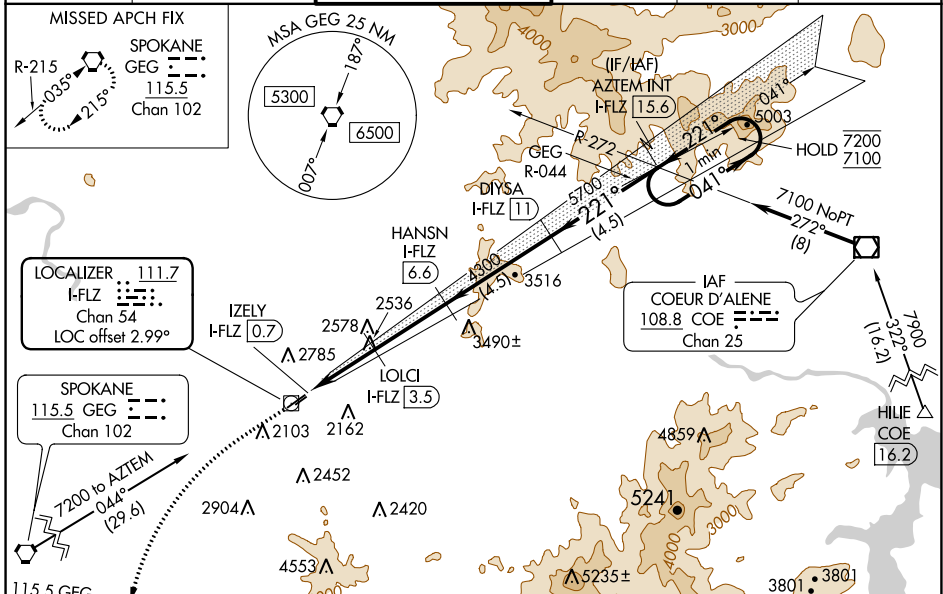


LOC/DME I-FLZ 111.7 Chan 54	APP CRS 221°	Rwy Idg TDZE Apt Elev	4499 1957 1957
---	------------------------	-----------------------------	---

ILS or LOC RWY 22R

FELTS FLD (S/F)

DME required.		MALSR		MISSED APPROACH: Climb to 3300 then climbing left turn to 5000 on heading 200° and GEG VORTAC R-080 to GEG VORTAC and hold.		
<p>▼ Circling NA northwest of Rwy 4L-22R. Circling Rwy 22L NA at night.</p> <p>⚠ Rwy 22R helicopter visibility reduction below 3/4 SM NA. For inop ALS, increase S-ILS Cat A/B/C visibility to 7/8 SM, increase S-LOC Cat A visibility to 1 SM and Cat C visibility to 2 1/2 SM.</p> <p>❄ -16°C</p>						
ATIS 120.55	SPOKANE APP CON 133.35 263.0	FELTS TOWER ★ 132.5 (CTAF) 239.025		GND CON 121.7	CLNC DEL 121.7	UNICOM 122.95



CATEGORY	A	B	C	D
S-ILS 22R	2257-1/2 300 (300-1/2)			NA
S-LOC 22R	2800-3/4	843 (900-3/4)	2800-1/8 843 (900-1/8)	NA
CIRCLING	2800-1 1/4 843 (900-1 1/4)	2800-1 1/2 843 (900-1 1/2)	3100-3 1143 (1200-3)	NA

ELEV 1957	TDZE 1957
REIL Rwy 4L	MIRL Rwy 4L-22R

NW-1, 05 OCT 2023 to 02 NOV 2023

NW-1, 05 OCT 2023 to 02 NOV 2023

WAAS CH 65931 W04A	APP CRS 038°	Rwy Idg TDZE Apt Elev	4499 1949 1957
--	------------------------	-----------------------------	---

RNAV (GPS) RWY 4L

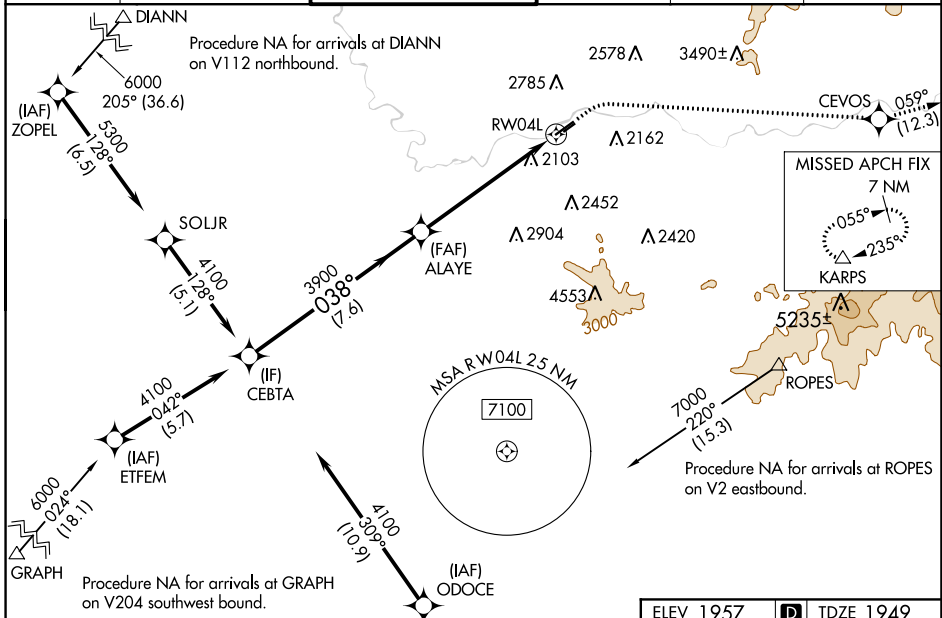
FELTS FLD (S'F'F)

RNP APCH - GPS.

⚠ Circling to Rwy 22L NA at night. Circling NA northwest of Rwy 4L-22R. Rwy 4L helicopter visibility reduction below 3/4 SM NA. For uncompensated Baro-VNAV systems, LNAV/VNAV NA below -18°C or above 54°C.

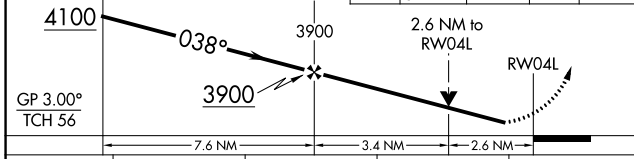
⚠ MISSED APPROACH: Climb to 2850 then climbing right turn to 8000 direct CEVOS and on track 059° to KARPS and hold, continue climb-in-hold to 8000.
* LPV missed approach requires minimum climb of 330 feet per NM to 5400.

ATIS 120.55	SPOKANE APP CON 133.35 263.0	FELTS TOWER * 132.5 (CTAF) 239.025	GND CON 121.7	CLNC DEL 121.7	UNICOM 122.95
-----------------------	--	--	-------------------------	--------------------------	-------------------------



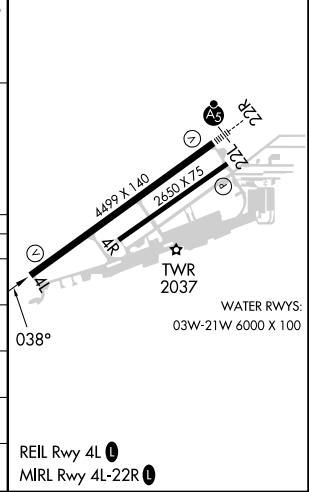
VGSi and RNAV glidepath not coincident (VGSi Angle 3.00/TCH 50).
CEBTA

2850	8000	CEVOS	tr 059°	KARPS
------	------	-------	---------	-------



CATEGORY	A	B	C	D
LPV DA*		2203-3/4	254 (300-3/4)	
LPV DA		2529-1 5/8	580 (600-1 5/8)	
LNAV/VNAV DA		2779-2 1/2	830 (900-2 1/2)	
LNAV MDA	2820-1 871 (900-1)	2820-1 1/4 871 (900-1 1/4)	2820-2 1/2	871 (900-2 1/2)
CIRCLING	2820-1 1/4	863 (900-1 1/4)	3100-3 1143 (1200-3)	3360-3 1403 (1500-3)

ELEV 1957 **D** TDZE 1949



NW-1, 05 OCT 2023 to 02 NOV 2023

NW-1, 05 OCT 2023 to 02 NOV 2023

VORTAC GEG	APP CRS	Rwy Idg	4499
115.5	046°	TDZE	1949
Chan 102		Apt Elev	1957

VOR RWY 4L

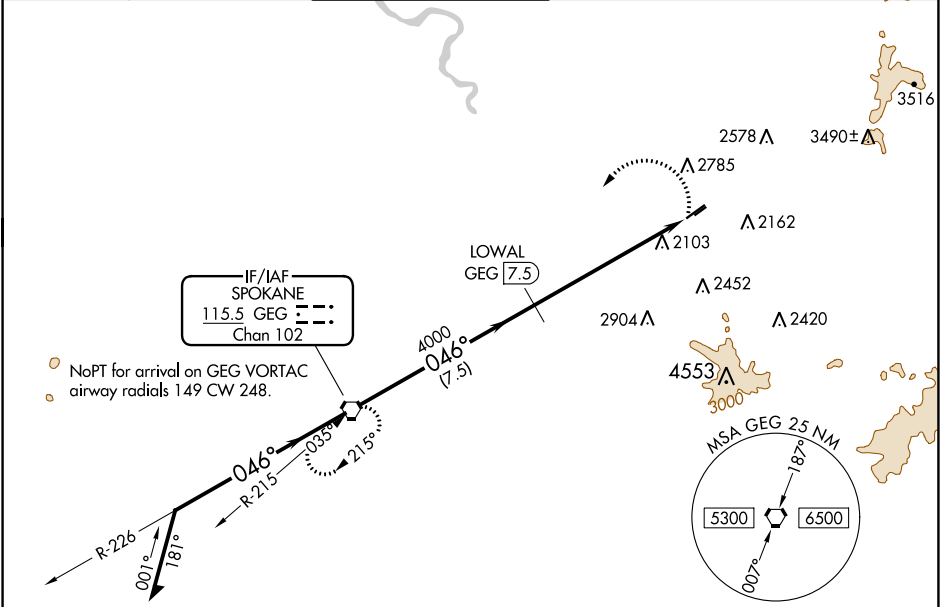
FELTS FLD (S'F'F)

DME required.

⚠ Circling NA northwest of Rwy 4L-22R. Circling Rwy 22L NA at night. Rwy 4L helicopter visibility reduction below ¾ SM NA.
❄ -16°C

MISSED APPROACH: Climbing left turn to 4500 direct GEG VORTAC and hold.

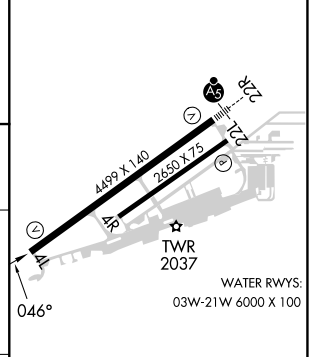
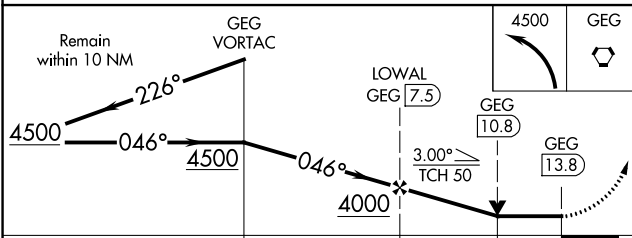
ATIS	SPOKANE APP CON	FELTS TOWER *	GND CON	CLNC DEL	UNICOM
120.55	133.35 263.0	132.5 (CTAF) 239.025	121.7	121.7	122.95



NW-1, 05 OCT 2023 to 02 NOV 2023

NW-1, 05 OCT 2023 to 02 NOV 2023

ELEV 1957	TDZE 1949
-----------	-----------



CATEGORY	A	B	C	D
S-4L	2960-1¼ 1011 (1100-1¼)	2960-1½ 1011 (1100-1½)	2960-3 1011 (1100-3)	
C CIRCLING	2960-1¼ 1003 (1100-1¼)	2960-1½ 1003 (1100-1½)	3100-3 1143 (1200-3)	3360-3 1403 (1500-3)

REIL Rwy 4L **Ⓛ**
 MRL Rwy 4L-22R **Ⓛ**