

FELTS FOUR DEPARTURE
21 JUL 16

SPOKANE, WASHINGTON
FELTS FIELD (S/F F)

DEPARTURE ROUTE DESCRIPTION

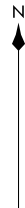
TAKEOFF RUNWAYS 4L/R: Climb heading 038° to 5000. Expect RADAR vectors to assigned airway/route, thence. . . .

TAKEOFF RUNWAYS 22L/R: Climbing left turn heading 190° to 5500. Expect RADAR vectors to assigned airway/route, thence. . . .
. . . .maintain 12000 or assigned lower altitude, expect filed altitude/flight level 10 minutes after departure.

LOST COMMUNICATIONS: Climb direct GEG VORTAC before proceeding on course. Cross GEG VORTAC at or above: northeast bound V120-448 and eastbound V2 5200.

**TOP ALTITUDE:
12000**

ATIS
120.55
GND CON
121.7
FELTS TOWER *
132.5 239.025
SPOKANE DEP CON
133.35 263.0



WHATCOM
113.0 HUH
Chan 77
N48°56.72'
W122°34.76'
L-1, H-1

EPHRATA
112.6 EPH
Chan 73
N47°22.68'-W119°25.44'
L-13, H-1

SPOKANE
115.5 GEG
Chan 102
N47°33.90'-W117°37.61'
L-13, H-1

COEUR D'ALENE
108.8 COE
Chan 25
N47°46.42'-W116°49.24'
L-13

YAKIMA
116.0 YKM
Chan 107
N46°34.21'-W120°26.68'
L-13, H-1

MOSES LAKE
115.0 MWH
Chan 97
N47°12.65'-W119°19.01'
L-13, H-1

TAKEOFF MINIMUMS
Rwys 4L/R: Standard with minimum climb of 400' per NM to 5000.
Rwys 22L/R: Standard with minimum climb of 370' per NM to 5500.

MULLAN PASS
117.8 MLP
Chan 125
N47°27.41'-W115°38.76'
L-13, H-1

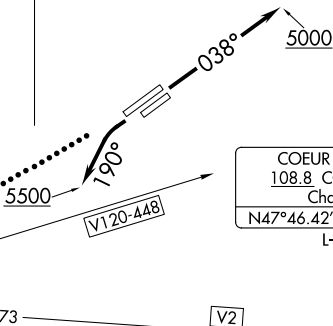
PASCO
109.8 PSC
Chan 35
N46°16.22'
W119°07.04'
L-13

PULLMAN
109.0 PUW
Chan 27
N46°40.45'
W117°13.41'
L-13

NEZ PERCE
108.2 MQG
Chan 19
N46°22.89'-W116°52.17'
L-13

PENDELTON
114.7 PDT
Chan 94
N45°41.91'-W118°56.32'
L-13, H-1

WALLA WALLA
116.4 ALW
Chan 111
N46°05.22'-W118°17.55'
L-13



FELTS FOUR DEPARTURE
17341

A1-402 (FAA)

FELTS FIELD (S/F F)
SPOKANE, WASHINGTON

NOTE: RADAR required.
NOTE: Chart not to scale.

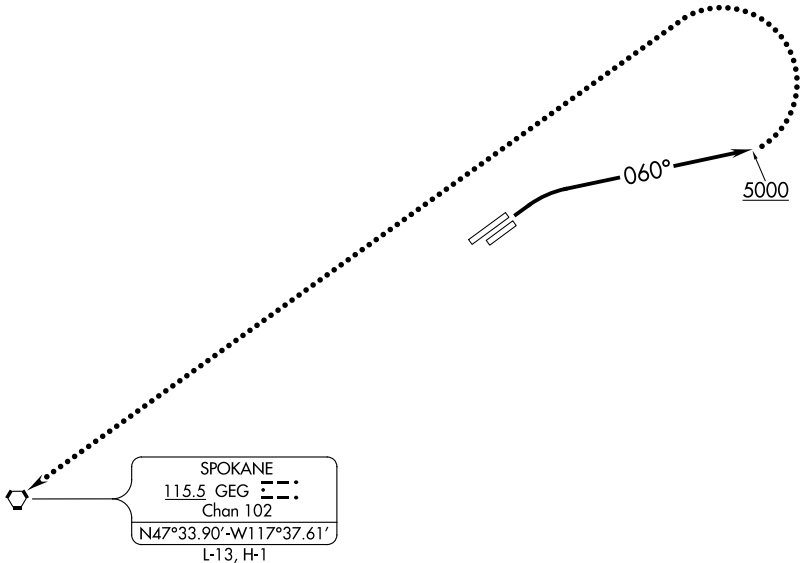
HAYDEN FOUR DEPARTURE

AL-402 (FAA)

FELTS FIELD (SF^F)
SPOKANE, WASHINGTON

ATIS
120.55
GND CON
121.7
FELTS TOWER★
132.5 239.025
SPOKANE DEP CON
133.35 263.0

TOP ALTITUDE:
12000



NW-1, 25 FEB 2021 to 25 MAR 2021

NW-1, 25 FEB 2021 to 25 MAR 2021

TAKEOFF MINIMUMS

Rwys 22L/R: NA- ATC.

Rwys 4L/R: Standard with minimum climb of 400' per NM to 5000.

NOTE: RADAR required.

NOTE: Chart not to scale.



DEPARTURE ROUTE DESCRIPTION

TAKEOFF RUNWAYS 22L/R: NA - ATC.

TAKEOFF RUNWAYS 4L/R: Climbing right turn heading 060° to 5000. Expect RADAR vectors to assigned route/fix.

LOST COMMUNICATIONS: If no radio contact with departure control after leaving 3000, continue climb to 5000, then left turn direct to GEG VORTAC, thence proceed on course.

HAYDEN FOUR DEPARTURE

SPOKANE, WASHINGTON
FELTS FIELD (SF^F)