

WAAS CH 61234 W23A	APP CRS 232°	Rwy Idg TDZE 1523 Apt Elev 1545	5505
--	------------------------	---	-------------

RNAV (GPS) RWY 23

SCOTT MUNI (SCX)

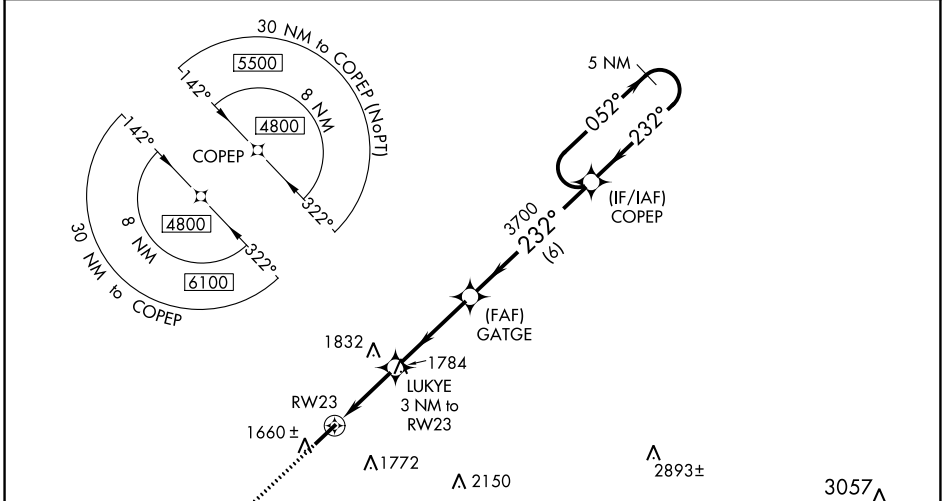
⚠ **⚠** **NA**

Night landing: Rwy 5 NA. For uncompensated Baro-VNAV systems, LNAV/VNAV NA below -18°C (0°F) or above 54°C (130°F). DME/DME RNP-0.3 NA. When local altimeter setting not received, use Monticello altimeter setting: increase LPV all Cats DA to 2005 feet, LNAV/VNAV all Cats DA to 2153 feet, LPV visibility ½ mile, LNAV/VNAV ⅜ mile; increase all MDA 240 feet and LNAV Cat C/D visibility ⅜ mile, Circling Cat B ¼ mile, Circling Cat C 1 mile and Circling Cat D ¾ mile. Inop table does not apply to LPV and LNAV all Cats. For inop ODALS, increase LNAV/VNAV Cat D visibility to 1 ⅜ mile. For inop ODALS when using Monticello altimeter setting, increase LPV all Cats visibility to 1 ⅜ mile, LNAV/VNAV all Cats to 2 ½ mile. When using Monticello altimeter setting, inop table does not apply to LNAV Cats A/C/D. VDP and Baro-VNAV NA when using Monticello altimeter setting.

ODALS

MISSED APPROACH:
Climb to 3900 direct ZITGO and hold.

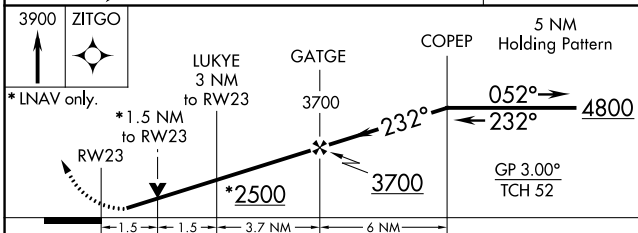
AWOS-3 135.025	INDIANAPOLIS CENTER 124.625 371.925	UNICOM 122.8 (CTAF)
--------------------------	---	-------------------------------



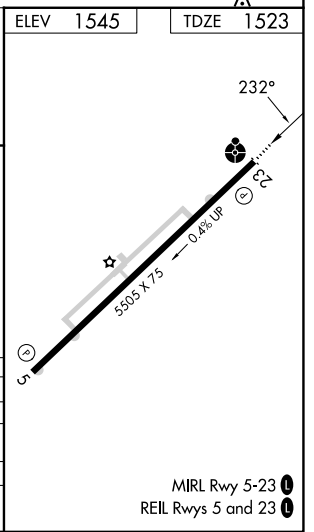
SE-1, 22 FEB 2024 to 21 MAR 2024

SE-1, 22 FEB 2024 to 21 MAR 2024

MISSED APCH FIX ZITGO	ELEV 1545	TDZE 1523
--------------------------	------------------	------------------



CATEGORY	A	B	C	D
LPV DA		1773-1	250 (300-1)	
LNAV/VNAV DA		1921-1 ⅜	398 (400-1 ⅜)	
LNAV MDA	2040-1	517 (500-1)	2040-1 ⅜	517 (500-1 ⅜)
CIRCLING	2040-1	495 (500-1)	2200-1 ¾	2260-2 ¼
			655 (700-1 ¾)	715 (800-2 ¼)



WAAS CH 90434 W05A	APP CRS 051°	Rwy Idg TDZE Apt Elev	5505 1545 1545
--	------------------------	-----------------------------	---

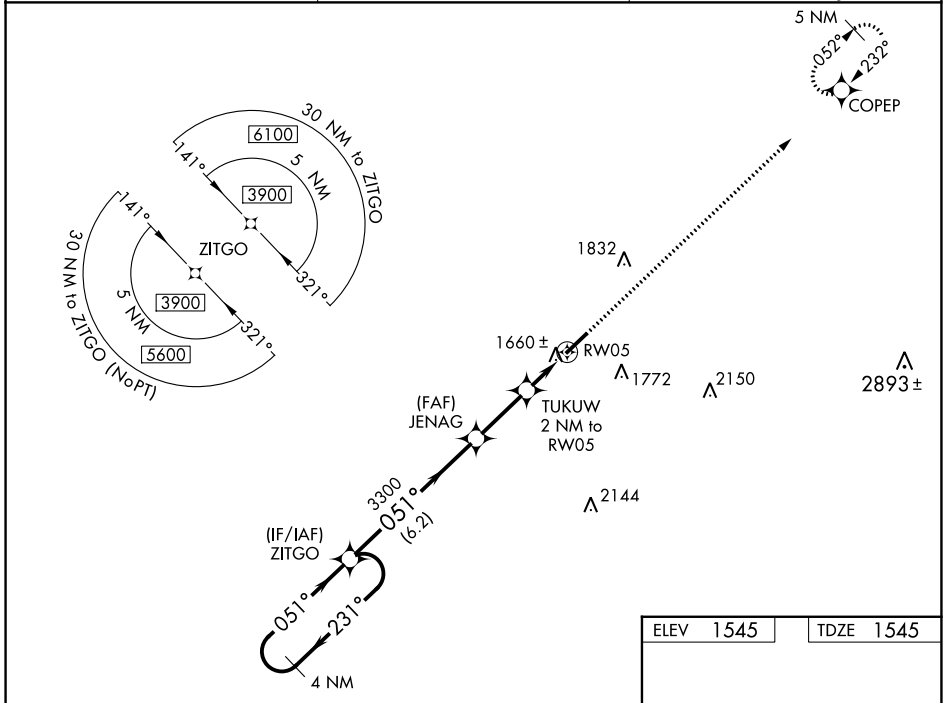
RNAV (GPS) RWY 5

SCOTT MUNI (SCX)

Baro-VNAV NA when using Monticello altimeter setting. For uncompensated Baro-VNAV systems, LNAV/VNAV NA below -18°C (0°F) or above 47°C (118°F). DME/DME RNP-0.3 NA. When local altimeter setting not received, use Monticello altimeter setting: increase LPV DA to 2180 feet, LNAV/VNAV DA to 2092 feet and all visibilities ¾ mile; increase all MDA 240 feet and LNAV Cat C visibility ¾ mile and Circling Cat C 1 mile. Night landing: Rwy 5 NA. Helicopter visibility reduction below 1 SM NA.

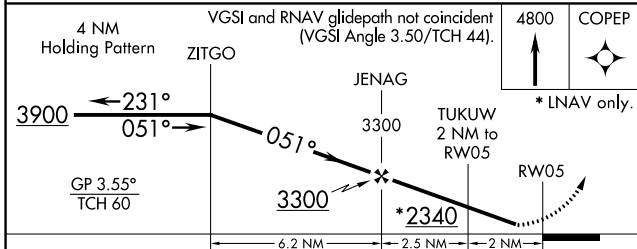
MISSED APPROACH:
Climb to 4800 direct COPEP and hold.

AWOS-3 135.025	INDIANAPOLIS CENTER 124.625 371.925	UNICOM 122.8 (CTAF) 0
--------------------------	---	---------------------------------

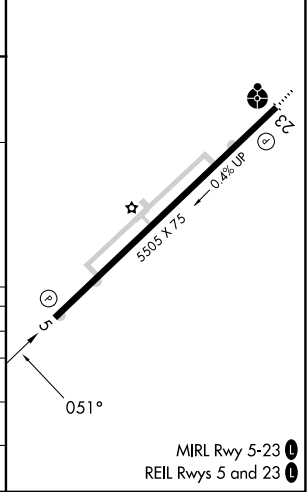


SE-1, 22 FEB 2024 to 21 MAR 2024

SE-1, 22 FEB 2024 to 21 MAR 2024



ELEV	1545	TDZE	1545
------	------	------	------



CATEGORY	A	B	C	D
LPV DA	1948-1 1/8 403 (500-1 1/8)			NA
LNAV/VNAV DA	1860-1 315 (400-1)			NA
LNAV MDA	1960-1 415 (500-1)	1960-1 1/8 415 (500-1 1/8)		NA
CIRCLING	2040-1 495 (500-1)	2200-1 3/4 655 (700-1 3/4)		NA

MIRL Rwy 5-23 0
REIL Rws 5 and 23 0

VOR/DME LVT 114.35 Chan 90 (Y)	APP CRS 107°	Rwy Idg TDZE Apt Elev N/A 1545
--	------------------------	---

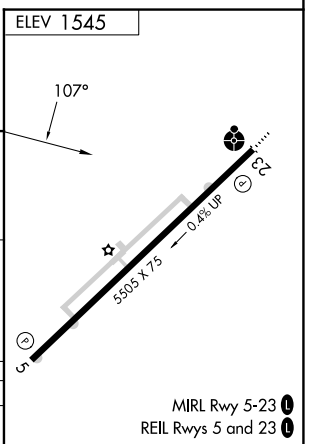
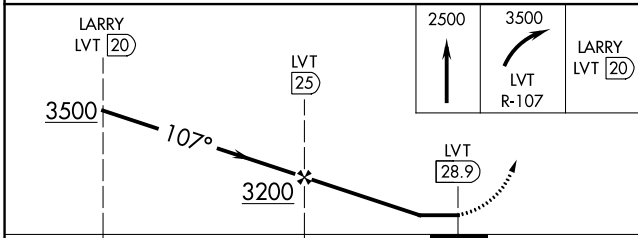
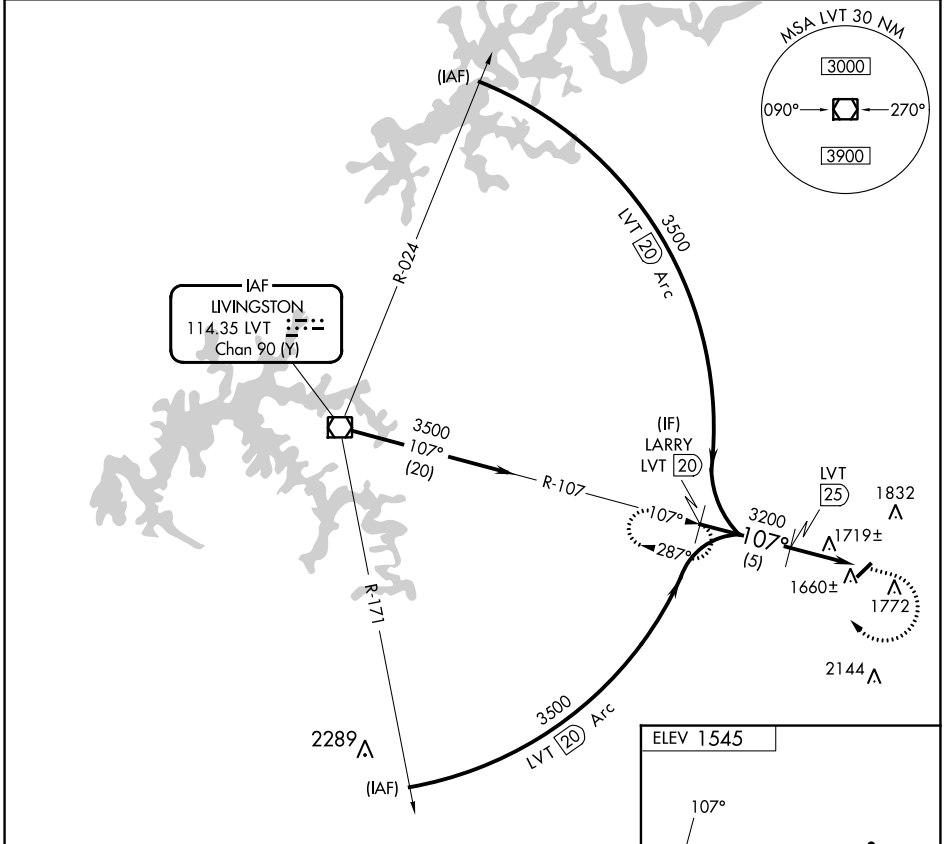
VOR/DME-A

SCOTT MUNI (SCX)

⚠ Circling to Rwy 5 NA at night. Helicopter visibility reduction below 1 SM NA. When local altimeter setting not received, use Monticello altimeter setting and increase all MDA 240 feet and Circling Cat C 1 SM, Cat D ¾ SM.

MISSED APPROACH: Climb to 2500 then climbing right turn to 3500 on LVT VOR/DME R-107 to LARRY/20 DME and hold.

AWOS-3 135.025	INDIANAPOLIS CENTER 124.625 371.925	UNICOM 122.8 (CTAF) 📻
--------------------------	---	--



CATEGORY	A	B	C	D
📻 CIRCLING	2040-1 495 (500-1)	2040-1¼ 495 (500-1¼)	2200-1¾ 655 (700-1¾)	2260-2¼ 715 (800-2¼)

SE-1, 22 FEB 2024 to 21 MAR 2024

SE-1, 22 FEB 2024 to 21 MAR 2024