

WAAS CH 77934 W10A	APP CRS 099°	Rwy Idg TDZE Apt Elev	5013 1043 1044
--	------------------------	-----------------------------	---

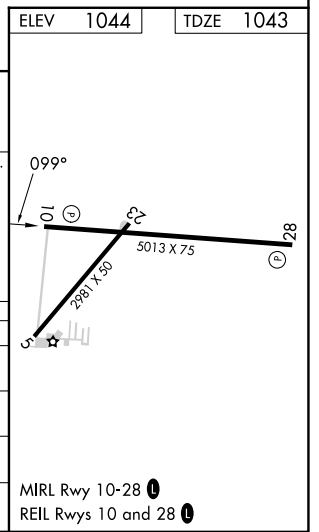
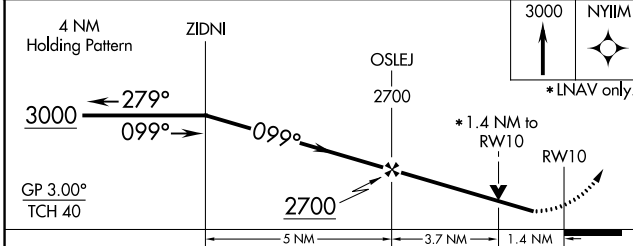
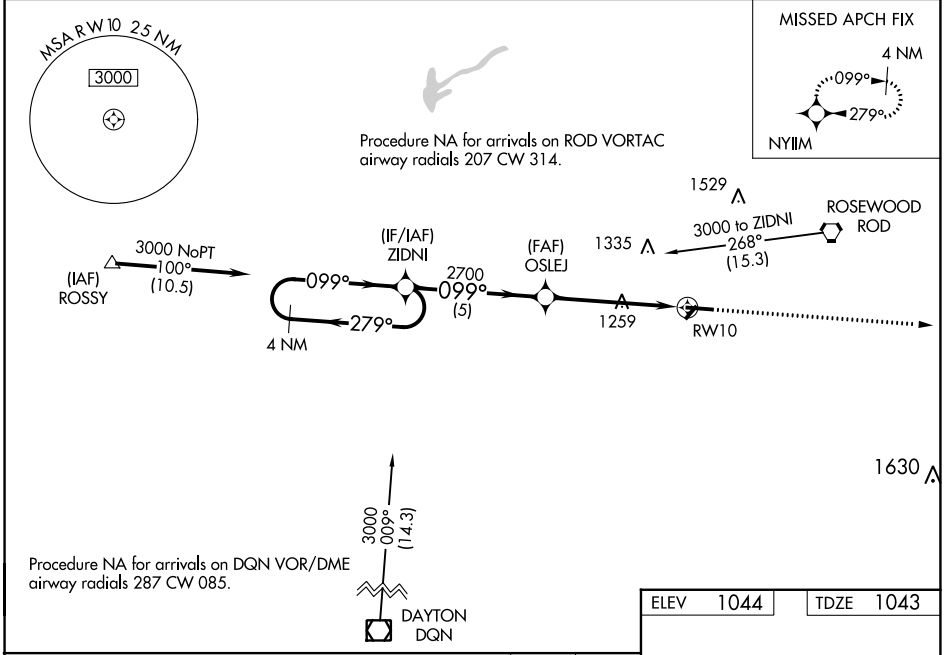
RNAV (GPS) RWY 10

SIDNEY MUNI (SCA)

⚠ For uncompensated Baro-VNAV systems, LNAV/VNAV NA below -22°C (-7°F) or above 54°C (130°F). DME/DME RNP-0.3 NA. Helicopter visibility reduction below 3/4 SM NA. Baro-VNAV and VDP NA when using James M Cox Dayton Intl altimeter setting. Night Landing: Rwy 28 operational VGSIs required, remain on or above VGSIs glidepath until threshold. When local altimeter setting not received, use James M Cox Dayton Intl altimeter setting and increase all DA 53 feet and all MDA 60 feet; increase LPV all Cats and LNAV Cats C/D visibility 1/8 mile and Circling Cat C visibility 1/4 mile.

MISSED APPROACH:
Climb to 3000 direct
NYIIM and hold.

AWOS-3 120.425	COLUMBUS APP CON 118.425 294.5	UNICOM 123.05 (CTAF)
--------------------------	--	--------------------------------



CATEGORY	A	B	C	D
LPV DA		1308-1	265 (300-1)	
LNAV/VNAV DA		1293-1	250 (300-1)	
LNAV MDA	1520-1	477 (500-1)	1520-1 3/8	477 (500-1 3/8)
C CIRCLING	1520-1	476 (500-1)	1640-1 1/2 596 (600-1 1/2)	1640-2 596 (600-2)

EC-2, 22 FEB 2024 to 21 MAR 2024

EC-2, 22 FEB 2024 to 21 MAR 2024

WAAS CH 82234	APP CRS 279°	Rwy Idg TDZE Apt Elev	5013 1044 1044
W28A			

RNAV (GPS) RWY 28

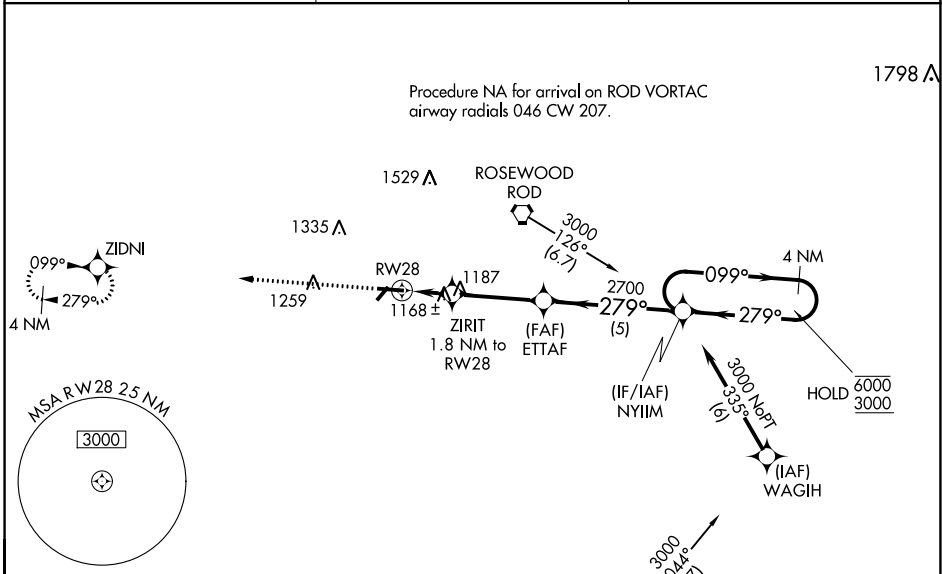
SIDNEY MUNI (SCA)

RNP APCH.

▼ Rwy 28 helicopter visibility reduction below 1 SM NA. Baro-VNAV NA when using James M. Cox Dayton Intl altimeter setting. For uncompensated Baro-VNAV systems, LNAV/VNAV NA below -22°C or above 54°C. When local altimeter setting not received, use James M. Cox Dayton Intl altimeter setting: increase LPV DA to 1355; increase LNAV/VNAV DA to 1365; increase all MDA 60 feet and LNAV Cat C visibility and Circling Cat C visibility ¼ SM. Straight-in hold. Rwy 28 at night, operational VGSI required, remain at or above VGSI glidepath until threshold.

▲ NA MISSED APPROACH: Climb to 3000 direct ZIDNI and hold.

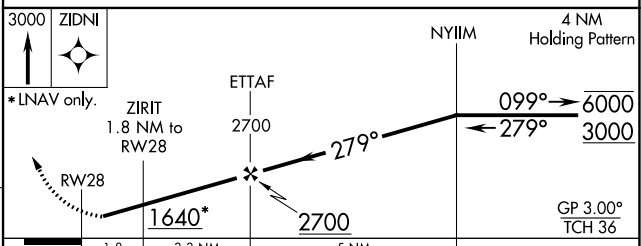
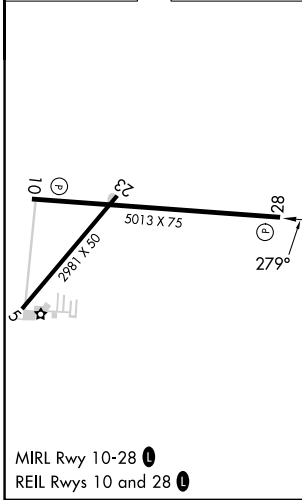
AWOS-3 120.425	COLUMBUS APP CON 118.425 294.5	UNICOM 123.05 (CTAF) 1
--------------------------	--	----------------------------------



EC-2, 22 FEB 2024 to 21 MAR 2024

EC-2, 22 FEB 2024 to 21 MAR 2024

ELEV 1044	TDZE 1044
-----------	-----------



CATEGORY	A	B	C	D
LPV DA	1302-1 258 (300-1)			NA
LNAV/VNAV DA	1312-1 268 (300-1)			NA
LNAV MDA	1420-1 376 (400-1)			NA
C CIRCLING	1460-1 416 (500-1)	1520-1 476 (500-1)	1640-1½ 596 (600-1½)	NA

SIDNEY, OHIO
Amdt 1A 13SEP18

40°14'N-84°09'W

SIDNEY MUNI (SCA)
RNAV (GPS) RWY 28

VORTAC ROD 117.5 Chan 122	APP CRS 245°	Rwy Idg TDZE Apt Elev	N/A N/A 1044
---	------------------------	-----------------------------	---

VOR-A
SIDNEY MUNI (SCA)

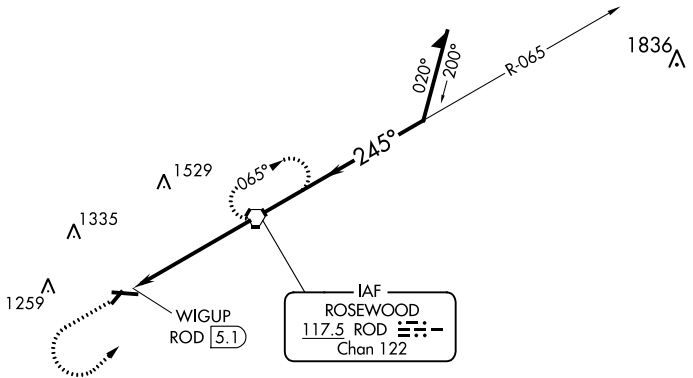
NA When local altimeter setting not received, use James M Cox Dayton Intl altimeter setting and increase all MDAs 60 feet and increase Cat C visibility ¼ mile. Night Landing: Rwy 28 operational VGSI required, remain on or above VGSI glidepath until threshold. Helicopter visibility reduction below 1 SM NA.

MISSED APPROACH: Climb to 3000 then left turn direct ROD VORTAC and hold.

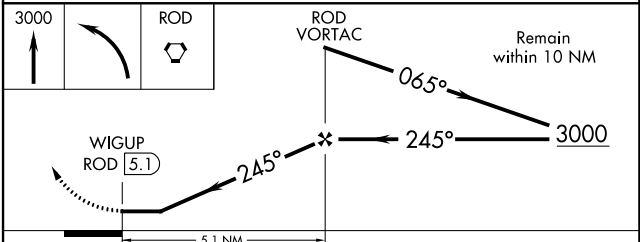
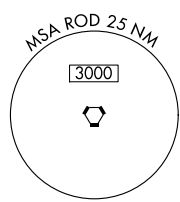
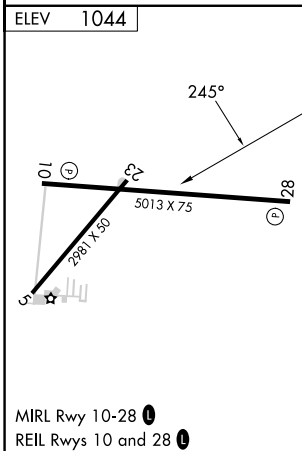
AWOS-3
120.425

COLUMBUS APP CON
118.425 294.5

UNICOM
123.05 (CTAF)



NoPT for arrivals on ROD Vortac airway radials 314 CW 088.



FAF to MAP 5.1 NM						
Knots	60	90	120	150	180	
Min:Sec	5:06	3:24	2:33	2:02	1:42	
CATEGORY	A		B		C	D
CIRCLING	1540-1		496 (500-1)		1640-1½ 596 (600-1½)	1640-2 596 (600-2)

SIDNEY, OHIO
Orig 12NOV15

40°14'N-84°09'W

SIDNEY MUNI (SCA)
VOR-A

EC-2, 22 FEB 2024 to 21 MAR 2024

EC-2, 22 FEB 2024 to 21 MAR 2024