

| | | |
|---|------------------------|---|
| LOC/DME I-SAN 111.55 Chan 52 (Y) | APP CRS 095° | Rwy Idg 7280 TDZE 17 Apt Elev 17 |
|---|------------------------|---|

ILS Y or LOC Y RWY 9

SAN DIEGO INTL (SAN)

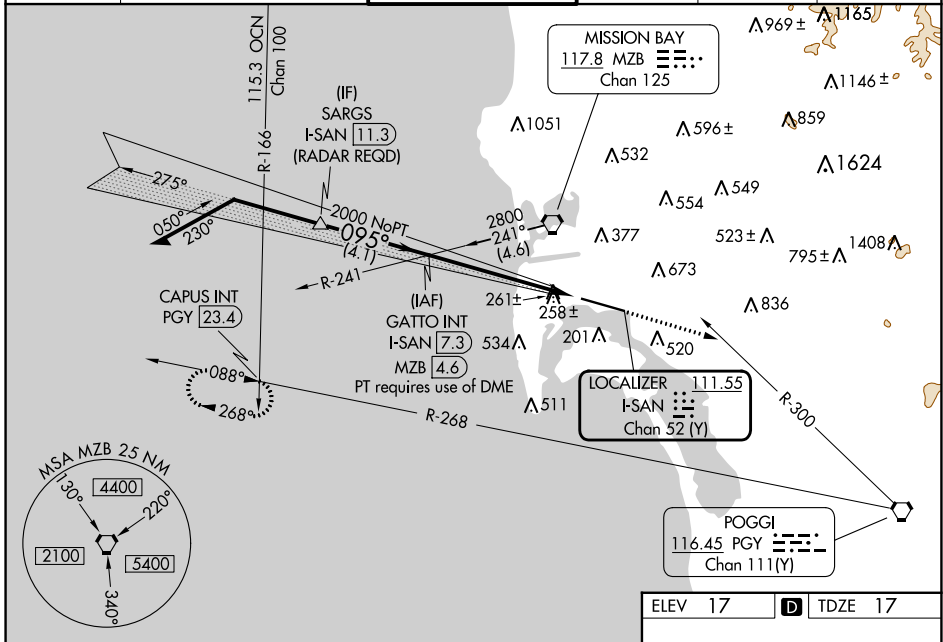
⚠ Circling NA north of Rwy 9-27. Autopilot coupled approach NA below 530. When Circling to Rwy 27 at night, operational VGSI required, remain on or above VGSI glidepath until threshold. For inop ALS, increase S-ILS 9 all Cats visibility to 2½ SM. Rwy 9 helicopter visibility reduction below RVR 4000 NA. #Inop table does not apply to S-ILS 9.

MALSRL



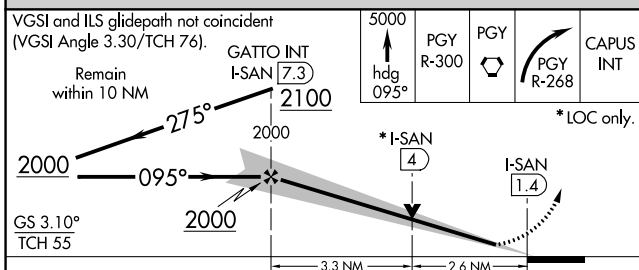
MISSED APPROACH: Climb to 5000 on heading 095° and on PGY VORTAC R-300 to PGY VORTAC, then right turn on PGY VORTAC R-268 to CAPUS INT/23.4 DME and hold. #Missed approach requires minimum climb of 270 feet per NM to 4000.

| | | | | | |
|------------------------|--|---|-------------------------|--------------------------|-------|
| D-ATIS 134.8 | SOCAL APP CON 119.6 363.1 (WEST) 124.35 279.625 (EAST) | LINDBERGH TOWER 118.3 338.225 | GND CON 123.9 | CLNC DEL 125.9 | CPDLC |
|------------------------|--|---|-------------------------|--------------------------|-------|



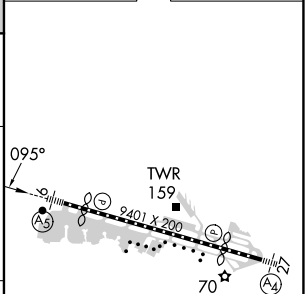
SW-3, 22 FEB 2024 to 21 MAR 2024

SW-3, 22 FEB 2024 to 21 MAR 2024



| | |
|---------|------------------|
| ELEV 17 | D TDZE 17 |
|---------|------------------|

| CATEGORY | A | B | C | D |
|-------------------|----------------------|---|----------------------|---|
| S-ILS 9# | 258/40 | | 241 (300-¾) | |
| S-ILS 9 | 751-2 | | 734 (800-2) | |
| S-LOC 9 | 960/40 943 (1000-¾) | | 960-2 943 (1000-2) | |
| C CIRCLING | 960-1¼ 943 (1000-1¼) | | 960-2¾ 943 (1000-2¾) | |
| | | | 960-3 943 (1000-3) | |



| | | | | | |
|---------------------------------------|------|------|------|------|------|
| TDZ/CL Rwys 9 and 27 HIRL Rwy 9-27 | | | | | |
| FAF to MAP 5.9 NM | | | | | |
| Knots | 60 | 90 | 120 | 150 | 180 |
| Min:Sec | 5:54 | 3:56 | 2:57 | 2:22 | 1:58 |

| | | |
|---|------------------------|---|
| LOC/DME I-SAN 111.55 Chan 52 (Y) | APP CRS 095° | Rwy Idg 7280 TDZE 17 Apt Elev 17 |
|---|------------------------|---|

ILS Z or LOC Z RWY 9

SAN DIEGO INTL (SAN)

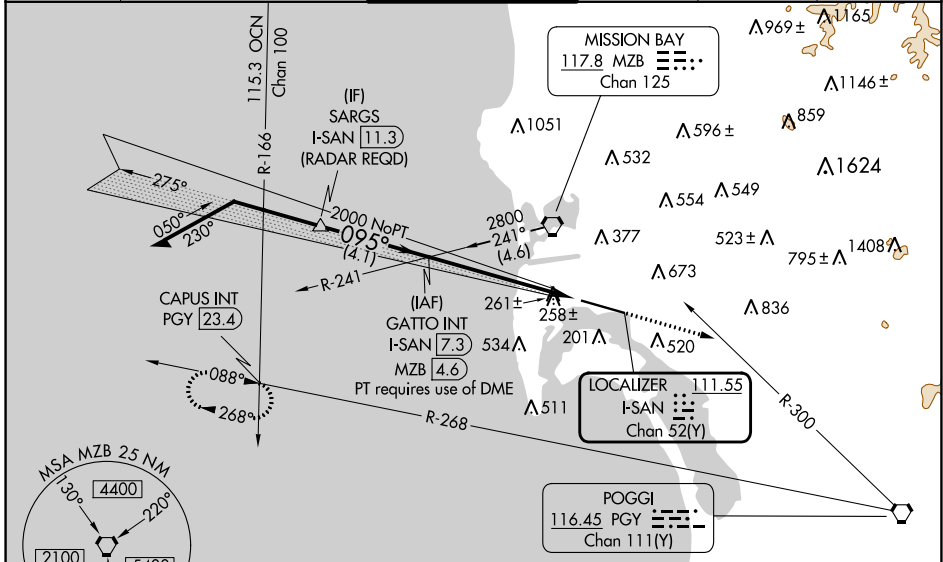
⚠ Circling NA north of Rwy 9-27. Autopilot coupled approach NA below 530. When Circling to Rwy 27 at night, operational VGSI required, remain on or above VGSI glidepath until threshold. For inop ALS, increase S-LOC Cat A/B visibility to RVR 5500, and Cat C/D to 1 3/8 SM. LOC only: Rwy 9 helicopter visibility reduction below RVR 4000 NA.

MALS R



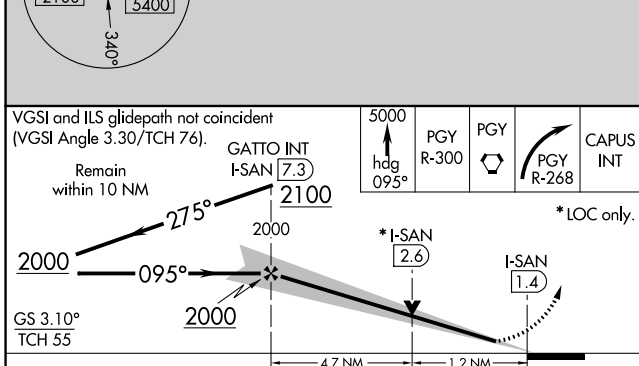
MISSED APPROACH: Climb to 5000 on heading 095° and on PGY VORTAC R-300 to PGY VORTAC, then right turn on PGY VORTAC R-268 to CAPUS INT/23.4 DME and hold.
#Missed approach requires minimum climb of 280 feet per NM to 3800; if unable to meet climb gradient, see ILS Y or LOC Y RWY 9.

| | | | | | |
|------------------------|--|---|-------------------------|--------------------------|-------|
| D-ATIS 134.8 | SOCAL APP CON 119.6 363.1 (WEST) 124.35 279.625 (EAST) | LINDBERGH TOWER 118.3 338.225 | GND CON 123.9 | CLNC DEL 125.9 | CPDLC |
|------------------------|--|---|-------------------------|--------------------------|-------|



SW-3, 22 FEB 2024 to 21 MAR 2024

SW-3, 22 FEB 2024 to 21 MAR 2024



| | | |
|---------------------------------------|----------|--------------------------|
| ELEV 17 | D | TDZE 17 |
| | | |
| TDZ/CL Rwys 9 and 27 HIRL Rwy 9-27 | | |
| FAF to MAP 5.9 NM | | |
| C CIRCLING | Knots | 60 90 120 150 180 |
| | Min:Sec | 5:54 3:56 2:57 2:22 1:58 |

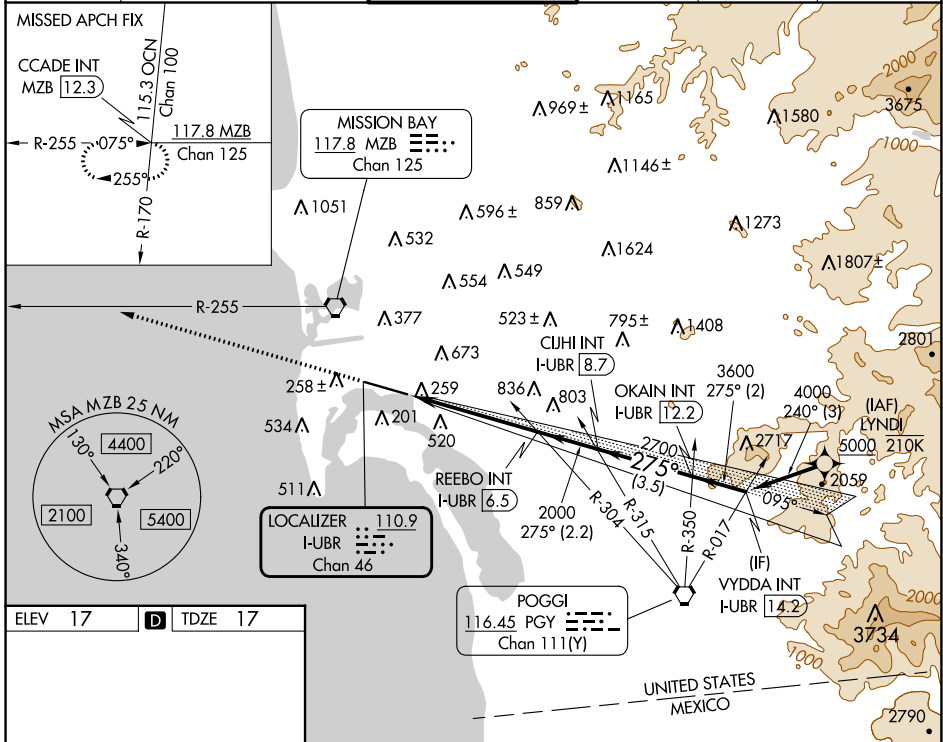
| CATEGORY | A | B | C | D |
|-------------------|----------------------|----------------------|------------------------------|-----------------------|
| S-ILS 9# | 217/18 200 (200-1/2) | | | |
| S-LOC 9 | 520/40 | 503 (600-3/4) | 520/55 | 503 (600-1) |
| C CIRCLING | 800-1 783 (800-1) | 820-1 803 (900-1) | 820-2 1/4 803 (900-2 1/4) | 940-3 923 (1000-3) |

| | | |
|---|------------------------|--|
| LOC/DME I-UBR 110.9 Chan 46 | APP CRS 275° | Rwy Idg TDZE Apt Elev 7591 17 17 |
|---|------------------------|--|

LOC RWY 27

SAN DIEGO INTL (SAN)

| | | | | | |
|--|--|---|--|--------------------------|-------|
| From LYNDI: RNAV 1-DME/DME/IRU or GPS required. | | MAIS ④ | MISSED APPROACH: Climb to 2500 on heading 275° and on MZB VORTAC R-255 to CCADE INT/MZB 12.3 DME and hold. | | |
| RNAV 1-DME/DME/IRU or GPS required for procedure entry. | | | | | |
| <p>▼ Rwy 27 helicopter visibility reduction below 1 SM NA. Circling NA north of Rwy 9-27. Inop table does not apply to Cats A and B. For inop ALS, increase S-27 Cats C and D visibility to 1/8 SM.</p> | | | | | |
| D-ATIS 134.8 | SOCAL APP CON 119.6 363.1 (WEST) 124.35 279.625 (EAST) | LINDBERGH TOWER 118.3 338.225 | GND CON 123.9 | CLNC DEL 125.9 | CPDLC |



| | | | | | | | | | | | | | | |
|--|----------|---------|-------|------|------|-----|-----|-----|---------|------|------|------|------|------|
| ELEV 17 | D | TDZE 17 | | | | | | | | | | | | |
| <p>TDZ/CL Rwy 9 and 27 HIRL Rwy 9-27</p> <p>FAF to MAP 5.2 NM</p> <table border="1"> <tr> <td>Knots</td> <td>60</td> <td>90</td> <td>120</td> <td>150</td> <td>180</td> </tr> <tr> <td>Min:Sec</td> <td>5:12</td> <td>3:28</td> <td>2:36</td> <td>2:05</td> <td>1:44</td> </tr> </table> | | | Knots | 60 | 90 | 120 | 150 | 180 | Min:Sec | 5:12 | 3:28 | 2:36 | 2:05 | 1:44 |
| Knots | 60 | 90 | 120 | 150 | 180 | | | | | | | | | |
| Min:Sec | 5:12 | 3:28 | 2:36 | 2:05 | 1:44 | | | | | | | | | |

| | | | | |
|---------------------|---------------------|----------------------|----------------------|--------------|
| 2500 | MZB R-255 | CCADE INT | VYDDA INT I-UBR 14.2 | |
| hdg 275° | | | | |
| REEBO INT I-UBR 6.5 | CUJHI INT I-UBR 8.7 | OKAIN INT I-UBR 12.2 | 4000 | |
| I-UBR 1.3 | 2700 | 3600 | | |
| 5.2 NM | 2.2 NM | 3.5 NM | 2 NM | |
| CATEGORY | A | B | C | D |
| S-27 | 680-1 | 663 (700-1) | 680-1¾ | 663 (700-1¾) |
| C CIRCLING | 820-1 | 803 (900-1) | 840-2½ | 940-3 |
| | | | 823 (900-2½) | 923 (1000-3) |

SW-3, 22 FEB 2024 to 21 MAR 2024

SW-3, 22 FEB 2024 to 21 MAR 2024

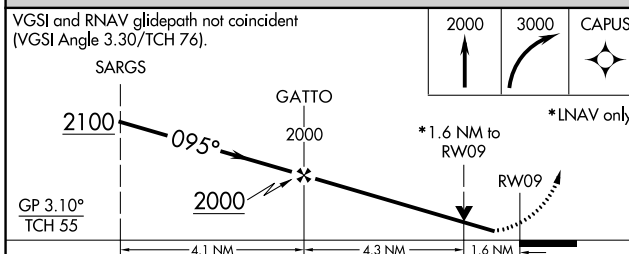
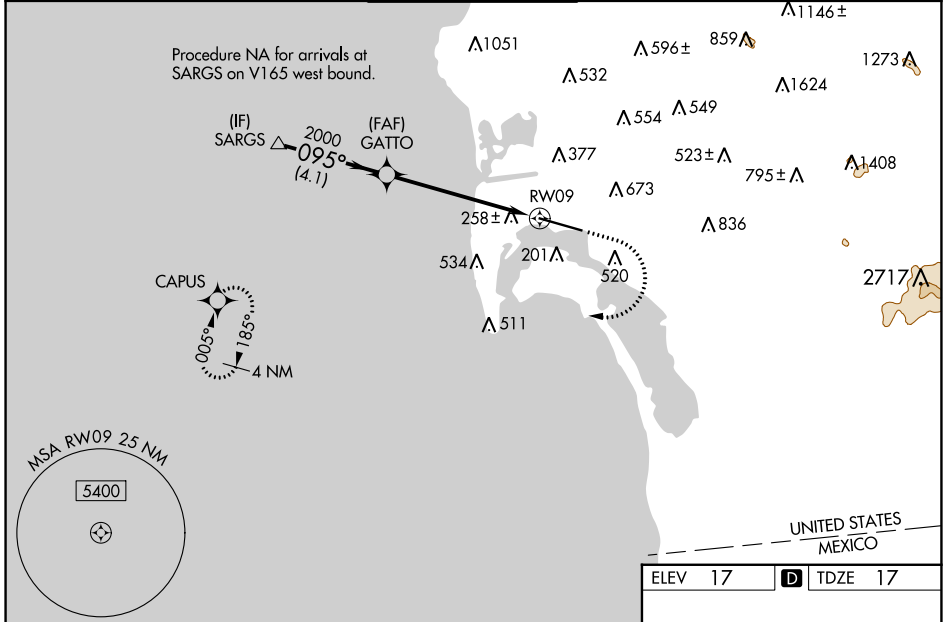
| | | |
|--|------------------------|---|
| WAAS CH 49237 W09A | APP CRS 095° | Rwy Idg 7280 TDZE 17 Apt Elev 17 |
|--|------------------------|---|

RNAV (GPS) RWY 9

SAN DIEGO INTL (SAN)

| | | | |
|-----------|---|--------|---|
| RNP APCH. | <p>⚠ Circling NA north of Rwy 9-27. For uncompensated Baro-VNAV systems, LNAV/VNAV NA below 6°C or above 47°C. When Circling to Rwy 27 at night, operational VGSI required, remain on or above VGSI glidepath until threshold. Rwy 9 helicopter visibility reduction below RVR 4000 NA. Inop table does not apply to LPV all Cats. For inop ALS, increase LNAV Cats A/B visibility to RVR 5500.</p> | MALS R | <p>MISSED APPROACH: Climb to 2000 then climbing right turn to 3000 direct CAPUS and hold.</p> |
| | | | |

| | | | | | |
|------------------------|--|---|-------------------------|--------------------------|-------|
| D-ATIS 134.8 | SOCAL APP CON 119.6 363.1 (WEST) 124.35 279.625 (EAST) | LINDBERGH TOWER 118.3 338.225 | GND CON 123.9 | CLNC DEL 125.9 | CPDLC |
|------------------------|--|---|-------------------------|--------------------------|-------|



| | |
|--|------------------|
| ELEV 17 | D TDZE 17 |
| | |
| <p>TDZ/CL Rwy 9 and 27 HIRL Rwy 9-27</p> | |

| CATEGORY | A | B | C | D |
|-------------------|----------------------|----------------------|------------------------|-----------------------|
| LPV DA | | 262/40 | 245 (300-¾) | |
| LNAV/VNAV DA | | 621-1½ | 604 (700-1½) | |
| LNAV MDA | 600/40 | 583 (600-¾) | 600-1¼ | 583 (600-1¼) |
| C CIRCLING | 800-1 783 (800-1) | 820-1 803 (900-1) | 820-2¼ 803 (900-2¼) | 940-3 923 (1000-3) |

SW-3, 22 FEB 2024 to 21 MAR 2024

SW-3, 22 FEB 2024 to 21 MAR 2024

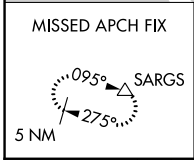
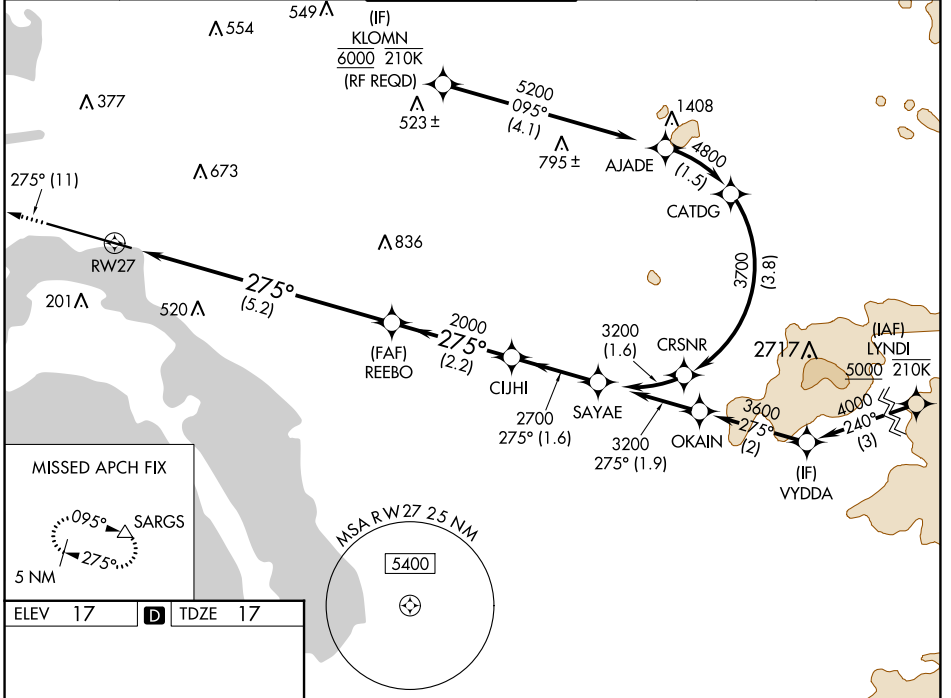
| | | |
|-------------|----------|-------------|
| APP CRS | Rwy Idg | 7591 |
| 275° | TDZE | 17 |
| | Apt Elev | 17 |

RNAV (RNP) Z RWY 27

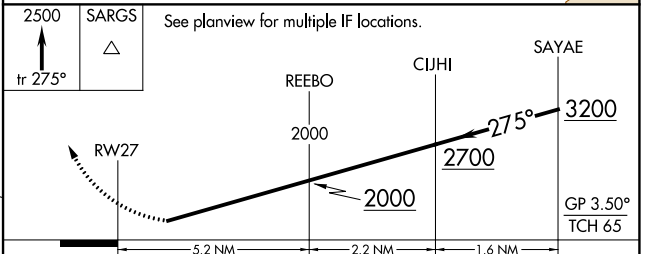
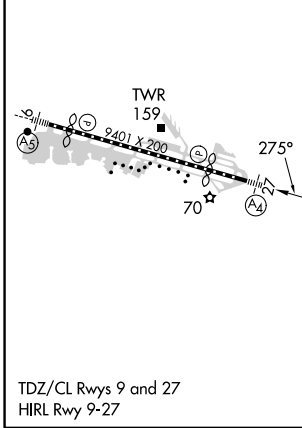
SAN DIEGO INTL (SAN)

| | | |
|---|------|---|
| RNP AR APCH. | MALS | MISSED APPROACH: Climb to 2500 on track 275° to SARGs and hold. |
| ▼ For uncompensated Baro-VNAV systems, procedure NA below 6°C or above 46°C. Straight-in Rwy 27 at night, operational VGSI required, remain on or above VGSI glidepath until threshold. For inop ALS, increase RNP 0.30 all Cats visibility to 2½ SM. | (A4) | |

| | | | | | |
|--------------|---|----------------------|--------------|--------------|-------|
| D-ATIS | SOCAL APP CON | LINDBERGH TOWER | GND CON | CLNC DEL | CPDLC |
| 134.8 | 119.6 363.1 (WEST) 124.35 279.625 (EAST) | 118.3 338.225 | 123.9 | 125.9 | |



| | | |
|---------|----------|---------|
| ELEV 17 | D | TDZE 17 |
|---------|----------|---------|



| | | | | |
|-------------|---|--------|--------------|---|
| CATEGORY | A | B | C | D |
| RNP 0.11 DA | | 617-1½ | 600 (600-1½) | |
| RNP 0.30 DA | | 778-2 | 761 (800-2) | |

AUTHORIZATION REQUIRED

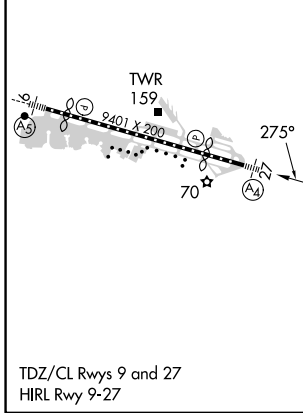
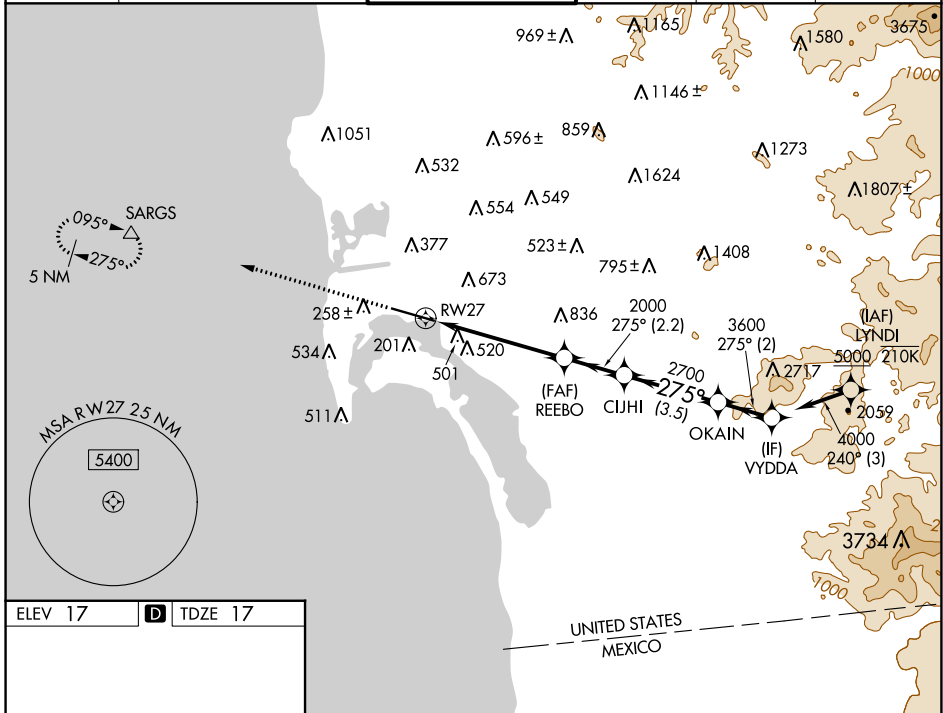
| | | | |
|--|------------------------|-----------------------------|---------------------------------------|
| WAAS CH 82527 W27A | APP CRS 275° | Rwy Idg TDZE Apt Elev | 7591 17 17 |
|--|------------------------|-----------------------------|---------------------------------------|

RNAV (GPS) Y RWY 27

SAN DIEGO INTL (SAN)

| | | |
|---|------|---|
| RNP APCH. | MALS | MISSED APPROACH: Climb to 2500 direct SARGs and hold. |
| <p>▼ Rwy 27 helicopter visibility reduction below RVR 5000 NA. Straight-in Rwy 27 at night, operational VGSI required, remain on or above VGSI glidepath until threshold. Circling NA north of Rwy 9-27. For inop ALS, increase LNAV Cts C/D visibility to 2 SM. Inop table does not apply to LP Cts A/B and LNAV Cat A.</p> | | |

| | | | | | |
|------------------------|--|---|-------------------------|--------------------------|-------|
| D-ATIS 134.8 | SOCAL APP CON 119.6 363.1 (WEST) 124.35 279.625 (EAST) | LINDBERGH TOWER 118.3 338.225 | GND CON 123.9 | CLNC DEL 125.9 | CPDLC |
|------------------------|--|---|-------------------------|--------------------------|-------|



| | | | | | |
|--------------------------------------|-------------------|-----------------------|------------------------|------------------------|-----------------------|
| ELEV 17 | D | TDZE 17 | | | |
| 2500 | SARGs | VYDDA | | | |
| ↑ | △ | | | | |
| TWR 159 | REEBO | CIJHI | OKAIN | VYDDA | |
| 2401 X 200 | 2000 | 2700 | 3600 | 4000 | |
| 70 | 5.2 NM | 2.2 NM | 3.5 NM | 2 NM | |
| TDZ/CL Rws 9 and 27 HIRL Rwy 9-27 | CATEGORY | A | B | C | D |
| | LP MDA | 680/50 | 663 (700-1) | 680-1¾ | 663 (700-1¾) |
| | LNAV MDA | 760/50 743 (800-1) | 760/55 743 (800-1) | 760-1⅞ | 743 (800-1⅞) |
| | C CIRCLING | 820-1 803 (900-1) | 820-1¼ 803 (900-1¼) | 820-2½ 803 (900-2½) | 940-3 923 (1000-3) |

SW-3, 22 FEB 2024 to 21 MAR 2024

SW-3, 22 FEB 2024 to 21 MAR 2024

SWEETWATER VISUAL RWY 27

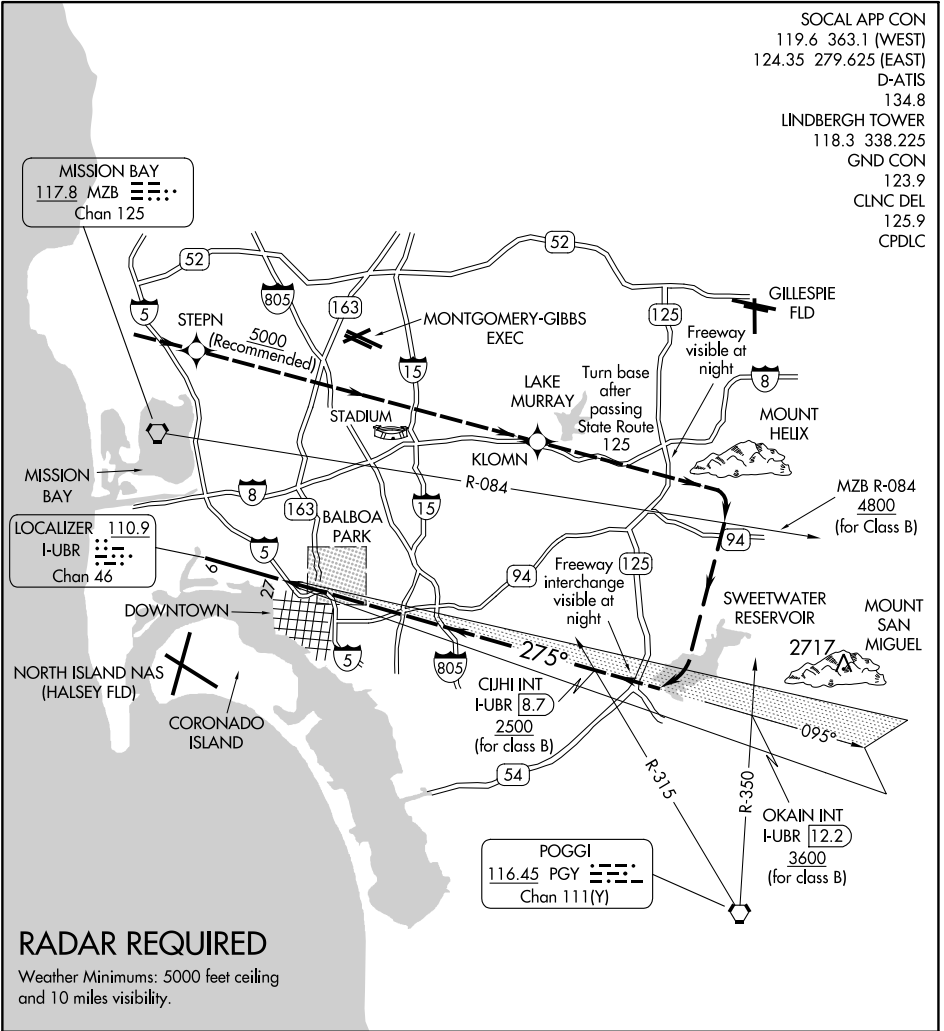
AL-373 (FAA)

SAN DIEGO INTL (SAN)
SAN DIEGO, CALIFORNIA

- SOCAL APP CON 119.6 363.1 (WEST)
- 124.35 279.625 (EAST)
- D-ATIS 134.8
- LINDBERGH TOWER 118.3 338.225
- GND CON 123.9
- CLNC DEL 125.9
- CPDLC

SW-3, 22 FEB 2024 to 21 MAR 2024

SW-3, 22 FEB 2024 to 21 MAR 2024



| | | | | | | | | | | | | | | | | | | | |
|---|----|---|---|---|---|---|---|---|---|----|----|----|----|----|----|----|----|----|----|
| 1 | NM | 2 | 3 | 4 | 5 | 6 | 7 | 8 | 9 | 10 | 11 | 12 | 13 | 14 | 15 | 16 | 17 | 18 | 19 |
|---|----|---|---|---|---|---|---|---|---|----|----|----|----|----|----|----|----|----|----|

SWEETWATER VISUAL APPROACH RWY 27

SWEETWATER VISUAL RWY 27

SAN DIEGO, CALIFORNIA
SAN DIEGO INTL (SAN)