

(GABOO.GABOO1) 22027

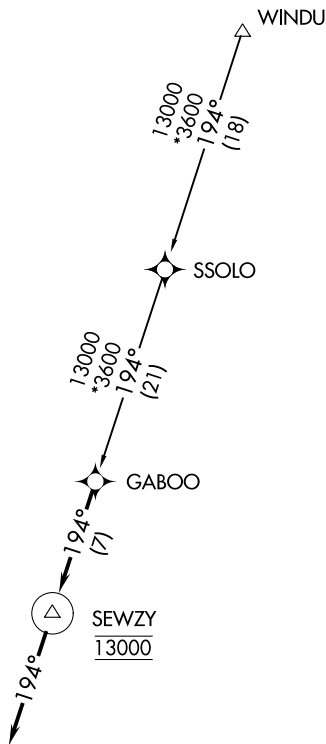
GABOO ONE ARRIVAL (RNAV)

AL-502 (FAA)

AUSTIN, TEXAS

AUSTIN APP CON
127.225 317.65
HYI ATIS ★
120.825
T74 AWOS-3PT
119.75

- NOTE: RADAR required.
- NOTE: RNAV 1.
- NOTE: DME/DME/IRU or GPS required.
- NOTE: Turbojet and turboprop aircraft only.



NOTE: Chart not to scale.

ARRIVAL ROUTE DESCRIPTION

SSOLO TRANSITION (SSOLO.GABOO1)

WINDU TRANSITION (WINDU.GABOO1)

LANDING ALL AIRPORTS: From GABOO on track 194° to cross SEWZY at 13000, then on track 194°. Expect RADAR vectors to final approach course.

GABOO ONE ARRIVAL (RNAV)

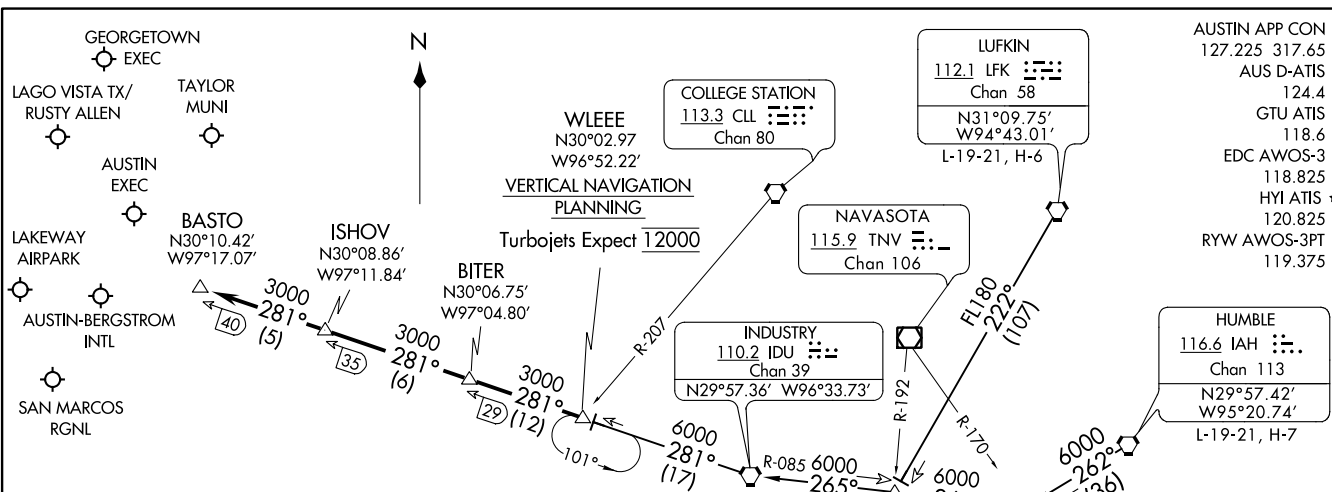
(GABOO.GABOO1) 16JUL20

AUSTIN, TEXAS

SC-3, 22 FEB 2024 to 21 MAR 2024

SC-3, 22 FEB 2024 to 21 MAR 2024

BITER NINE ARRIVAL
(WLEEE.BITER9) 25APR19



AUSTIN APP CON
127.225 317.65
AUS D-ATIS
124.4
GTU ATIS
118.6
EDC AWOS-3
118.825
HYI ATIS *
120.825
RYW AWOS-3PT
119.375

(WLEEE.BITER9) 22195
BITER NINE ARRIVAL

AL-556 (FAA)


AUSTIN, TEXAS


AUSTIN, TEXAS


BLEWE FIVE ARRIVAL

AUSTIN, TEXAS

AUSTIN APP CON
127.225 317.65
AUS D-ATIS
124.4
EDC AWOS-3
118.825
HYI ATIS *
120.825
RYW AWOS-3PT
119.375

WACO
115.3 ACT 
Chan 100
N31°39.73'-W97°16.14'
L-19, H-6

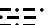
MAVERICK
113.1 TTT 
Chan 78

GOOCH SPRINGS
112.5 AGJ 
Chan 72

WINDU
N31°31.83'
W97°04.95'
H-6

BLEWE
N31°12.46'
W97°12.54'

SEWZY
N30°48.80'
W97°21.74'
VERTICAL NAVIGATION
PLANNING
Expect 13000

CENTEX
112.8 CWK 
Chan 75
N30°22.71'-W97°31.79'

LAGO VISTA TX/
RUSTY ALLEN

LAKEWAY
AIRPARK

AUSTIN-BERGSTROM
INTL

SAN MARCOS RGNL

NOTE: RADAR required.
NOTE: DME required.

NOTE: Chart not to scale.

ARRIVAL ROUTE DESCRIPTION

WACO TRANSITION (ACT.BLEWE5): From over ACT VORTAC on ACT R-165 to BLEWE. Thence

WINDU TRANSITION (WINDU.BLEWE5): From over WINDU on CWK R-012 to BLEWE. Thence. . . .

. . . .From over BLEWE on CWK R-012 to SEWZY, then on CWK R-012 to CWK VORTAC. Expect vectors to final approach course at or prior to CWK VORTAC.

BLEWE FIVE ARRIVAL

AUSTIN, TEXAS

SC-3, 22 FEB 2024 to 21 MAR 2024

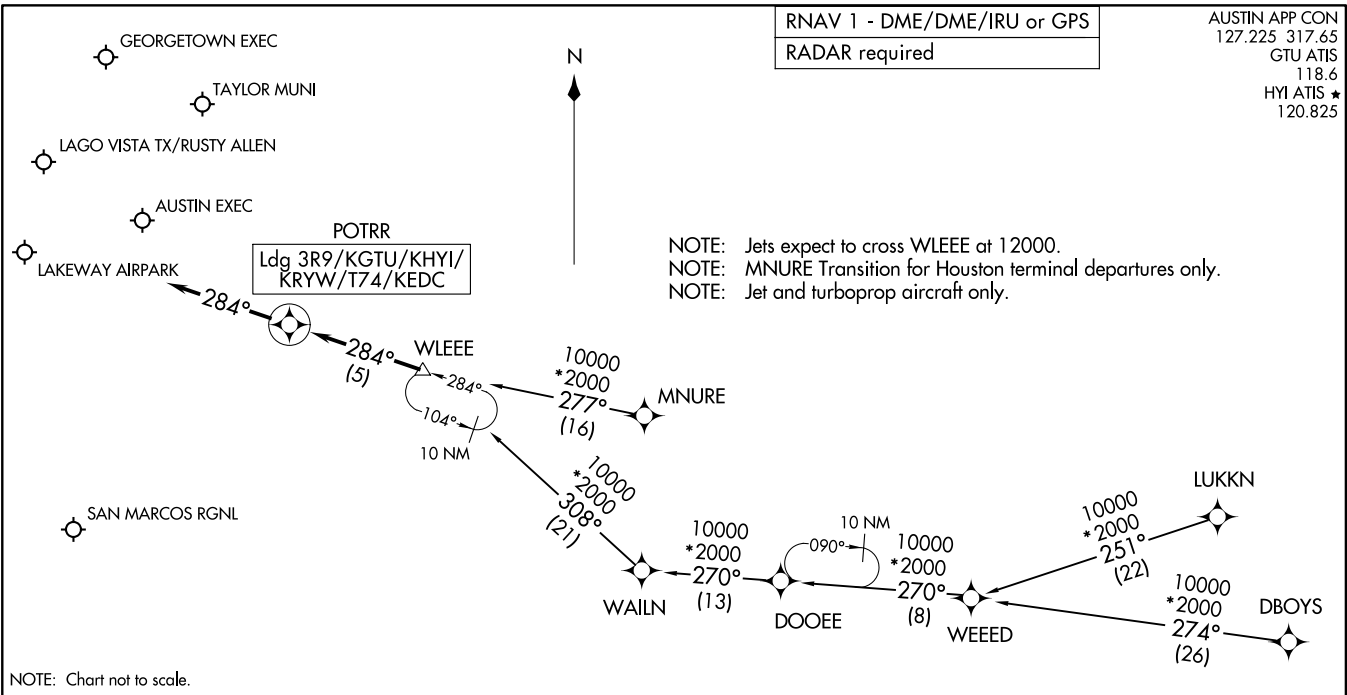
SC-3, 22 FEB 2024 to 21 MAR 2024

POTRR TWO ARRIVAL (RNAV)
(WLEEE.POTRR2) 14JUL22

(WLEEE.POTRR2) 22195
POTRR TWO ARRIVAL (RNAV)

RNAV 1 - DME/DME/IRU or GPS
RADAR required

AUSTIN APP CON
127.225 317.65
GTU ATIS
118.6
HYI ATIS ★
120.825



NOTE: Jets expect to cross WLEEE at 12000.
NOTE: MNURE Transition for Houston terminal departures only.
NOTE: Jet and turboprop aircraft only.

NOTE: Chart not to scale.

ARRIVAL ROUTE DESCRIPTION

- DBOYS TRANSITION (DBOYS.POTRR2)
- LUKKN TRANSITION (LUKKN.POTRR2)
- MNURE TRANSITION (MNURE.POTRR2)
- WEEED TRANSITION (WEEED.POTRR2)

LANDING ALL AIRPORTS: From WLEEE on track 284° to POTRR, then on track 284°. Expect RADAR vectors to final approach course.

AUSTIN, TEXAS

AUSTIN, TEXAS